



Ministry of Gender Equality and Family Welfare

Annual Report 2023/2024



Family Welfare

**Welfare and
empowerment
of citizens**



Child Protection

**Gender
Equality**



October 2024

Table of Contents

Message Of The Hon. Minister	1
Message Of The Permanent Secretary	2
PART I - ABOUT THE MINISTRY	3
1.1 Roles And Functions Of The Ministry	3
1.2 Vision and Mission	4
1.3 Key Legislations And Regulations Under The Responsibility Of The Ministry	5
1.4 Units Of The Ministry	6
1.4.1 Planning And Research Unit	7
1.4.2 Gender Unit.....	8
1.4.3 Child Development Unit.....	9
1.4.4 Family Welfare And Protection Unit.....	11
1.4.5 Home Economics Unit.....	12
1.4.6 Psychological Services Unit	13
1.4.7 Social Welfare Division.....	14
1.4.8 Adoption Unit.....	15
1.5 Parastatal Bodies	16
1.6 Gender Statement	17
1.7 About Our People	18
PART II- ACHIEVEMENT	19
2.1 Major Achievement.....	19
2.2 Status Of Implementation Of Budget Measures.....	21
2.3 Management, Citizen Oriented Initiatives & Good Governance.....	39
2.4 Implementation Plan- Director Of Audit Comments	42
PART III-FINANCIAL PERFORMANCE	45
3.1 Financial Highlights.....	45
3.2 Statement Of Revenue And Expenditure	51
PART IV- WAY FORWARD.....	54
4.1 Trends And Challenges	54
4.2 Strategic Direction 2024 2025	56

MESSAGE OF THE HON. MINISTER

It is with immense pride that I present the Annual Report for the Financial Year 2023-2024. This year has been pivotal for the Ministry of Gender Equality and Family Welfare, as we have made significant strides in promoting gender equality, protecting the rights of women and children, and fostering family welfare across the nation.

Our commitment to gender equality is reflected in Mauritius's improved ranking in the Global Gender Gap Index, where we have moved from 105th to 98th place. The National Gender Policy 2022-2030 remains our guiding framework, and I am pleased to report that over 58% of its strategic actions have been completed. Initiatives such as the HeForShe Project have mobilized communities, engaging men and boys as active participants in promoting gender equity.

This year has also seen a robust response to gender-based violence (GBV). The expansion of Family Support Services and the launch of new centres in Souillac and Bambous, are concrete steps towards providing holistic care and protection to survivors. Our efforts in this domain are further strengthened by our collaboration with various stakeholders to implement the National Strategy and Action Plan on GBV.

In child protection, our efforts have been equally robust. The reintegration of 289 children through the Back to Home Programme, along with the empowerment of 172 foster parents, illustrates our dedication to ensuring every child has a safe and nurturing environment.

Looking ahead, our focus will be on bridging gender disparities, enhancing support systems for families, and advancing the rights of children. We remain steadfast in our mission to create a society where every individual can thrive free from violence and discrimination. I extend my sincere gratitude to our dedicated team, partners, and the community for their unwavering support and commitment to these shared goals.

Hon. (Mrs) Kalpana Devi KOONJOO- SHAH
Minister of Gender Equality and Family Welfare



MESSAGE OF THE PERMANENT SECRETARY

Since joining the Ministry of Gender Equality and Family Welfare in May 2024, I have been deeply impressed by the dedication of our staff and the progress we have made in delivering key services and support to the people of Mauritius.

Our primary focus this year has been on enhancing operational efficiency and service delivery. We have successfully expanded the Family Support Services network, ensuring that survivors of gender-based violence receive timely and comprehensive assistance. The rollout of new centers in regions such as Souillac and Bambous, with additional services planned for St Pierre and Piton, highlights our commitment to extending our reach to every community.

In the area of child protection, we have prioritized strengthening the Back to Home Programme and the Foster Care system. Over 27,000 calls were managed through our Integrated Support Center, and our team has successfully reintegrated 289 children into safe family environments. Despite challenges in resource allocation and coordination, our resolve to support the welfare and development of every child remains strong.

We have also focused on implementing the National Gender Policy 2022-2030, with 58% of its actions now completed. Our collaboration with public institutions to establish Gender Cells and integrate gender perspectives into their policies and programmes is a testament to our holistic approach to gender equality.

Moving forward, my goal is to streamline our processes further, strengthen data collection mechanisms, and ensure that our services are both accessible and effective. I am committed to building on our achievements and addressing the challenges that lie ahead with the support of our dedicated staff and partners.

Navindsing Jugmohunsing (Mr)
Permanent Secretary
Ministry of Gender Equality and Family Welfare

1.1 **ROLES AND FUNCTIONS OF THE MINISTRY**

This Ministry is responsible for the formulation and implementation of policies for the promotion of gender equality as well as the rights and welfare of women, children and families including the community. The policies, programmes, projects and activities are geared towards:



Social, economic and political empowerment of women for the attainment of gender equality



Protection of women and children against violence and abuse



Safeguarding the rights of women and children



Promotion of the welfare of women, children and families



Promoting the welfare of citizens through community-based programmes, activities and services

1.2 Vision and Mission

Vision

To have a society which is free from violence, exploitation and discrimination based on sex, where the fundamental rights of women and children are respected and where human values within the family and the civil society are cherished.

Mission

To design and implement policies and programmes geared towards promoting gender equality, protecting the rights of children and enhancing their overall development, promoting the well-being of families and fostering community-based activities/programmes/ services for the general welfare of the citizens.

1.3 Key Legislations and Regulations under the responsibility of the Ministry

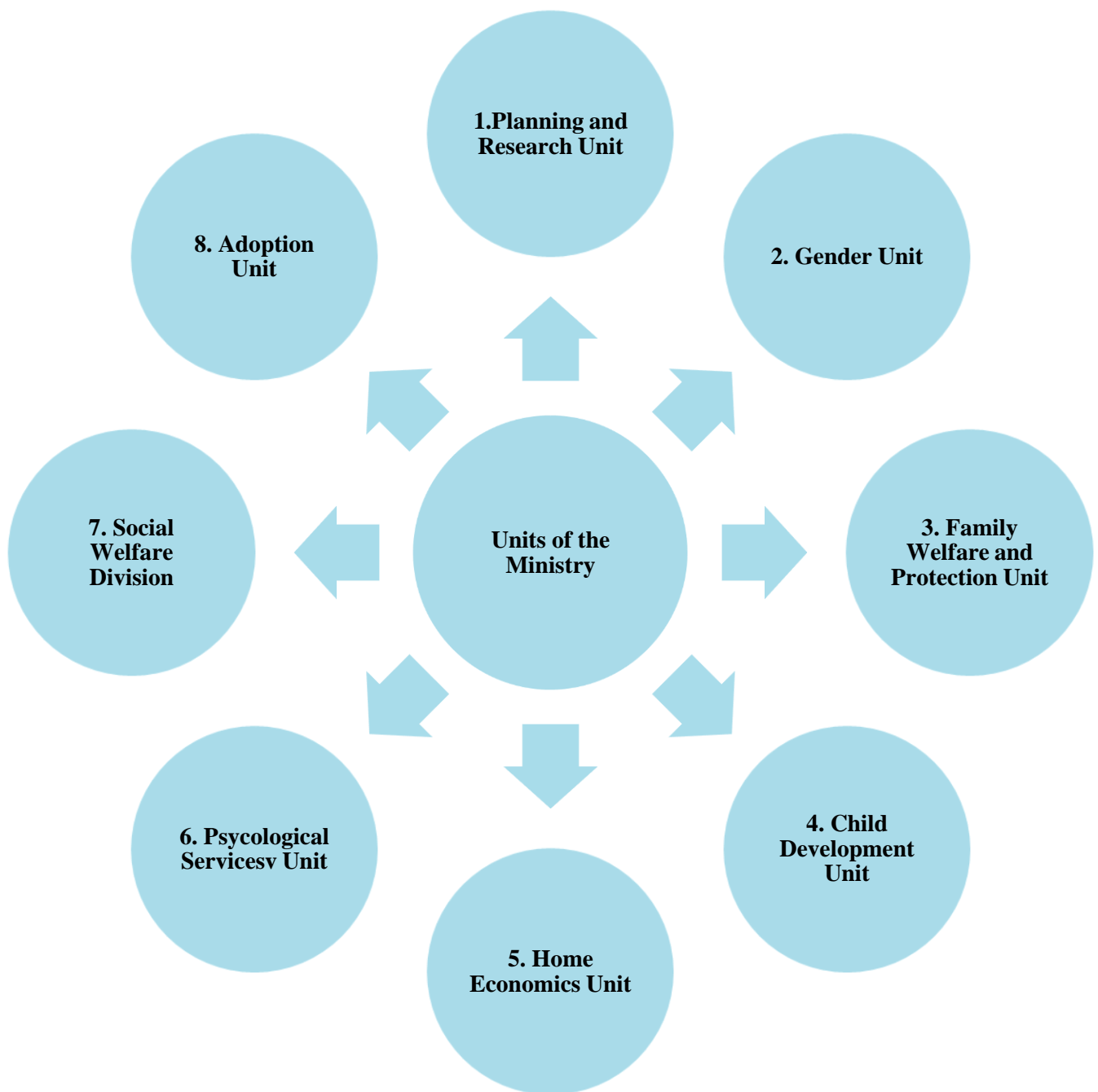
Regulations and Legislation

- 1 The Social Welfare Centres Act
1961
- 2 The Sugar Industry Labour Welfare Fund Act
1974
- 3 The National Adoption Council Act
1988
- 4 The Protection from Domestic Violence Act
(1997) subsequently amended in 2004, 2007, 2011 and 2016
- 5 The National Women Entrepreneur Council Act
1999
- 6 The Hague Convention on the Civil Aspects of International Child Abduction Act
2000
- 7 The National Children's Council Act
2003
- 8 The National Women's Council Act
2016
- 9 The Children's Act
2020
- 10 The Children's Court Act
2020
- 11 The Child Sex Offender Register Act
2020
- 12 The Residential Care Institution for Children Regulations
2022
- 13 The Child (Foster) Care Regulations
2022
- 14 The Child Day Care Centres Regulations
2022

*No to
stereotypes
yes to*

e
q
u
a
l
i
t
y

This Ministry comprises eight main technical units namely:



1.4.1 Planning and Research Unit

The Planning and Research Unit (PRU) set up in 1989 acts as a coordination and support unit to provide technical back up to all the units and parastatal bodies operating under the aegis of the Ministry.

It is also responsible for the preparation of policies, programmes, projects, action plans and reports on issues relating to women, child development, family welfare, social welfare and community development. It establishes base line data on women, family and children in the fields of health, education and employment amongst others and produces an annual report “Statistics in Mauritius-A Gender Approach” for dissemination to stakeholders. Furthermore, the PRU acts as a liaison with government institutions and non-state actors on pertinent issues relating to this Ministry.

Licensing and Enforcement Section

The Licensing and Enforcement Section ensures that:

- i. the norms and standards of the Residential Care Institutions, whereby children victims of violence are placed, are met to provide a continuum of care; and
- ii. Child Day Care Centres are fully compliant with the prescribed norms and standards laid down in the Child Day Care Centres Regulations 2022 under the Children’s Act 2020.

1.4.2. Gender Unit

The Gender Unit, as the National Gender Machinery, is responsible to work towards the attainment of gender equality.

The Gender Unit operates through a network of six (6) Women Empowerment Centres and one (1) Wellness Centre for Women strategically located across the island, which provide an appropriate and exclusive environment, relevant to the needs of women, where they can come together to gain confidence; develop skills; participate in training; get support; organise group meetings, activities and access other services.

**❖ Women
Empowerment
Centres:**

1.Paillotte

2. Rose Hill

3.Flacq

4.Dagotièr

5.Lallmatie

**Women
Wellness
Centre:**

Floreal Women Wellness Centre

The Gender Unit also works in close collaboration with the National Women's Council and the National Women Entrepreneur Council to ensure the social, economic and political empowerment of women.

Since December 2023, the Gender Unit has initiated a project called the 'HeForShe club', which has been implemented in 25 Community Centres across the island. The project aims at bringing about male peer groups for reflection and taking collective action for accelerated behavioural change. It has a team leader as CHAMPION for gender equality and other voluntary male members who work in alliance with other ambitious leaders in different sectors across Government (Gender Focal Points, Parastatals, non- state actors, Academia amongst others) to make gender equality a reality.

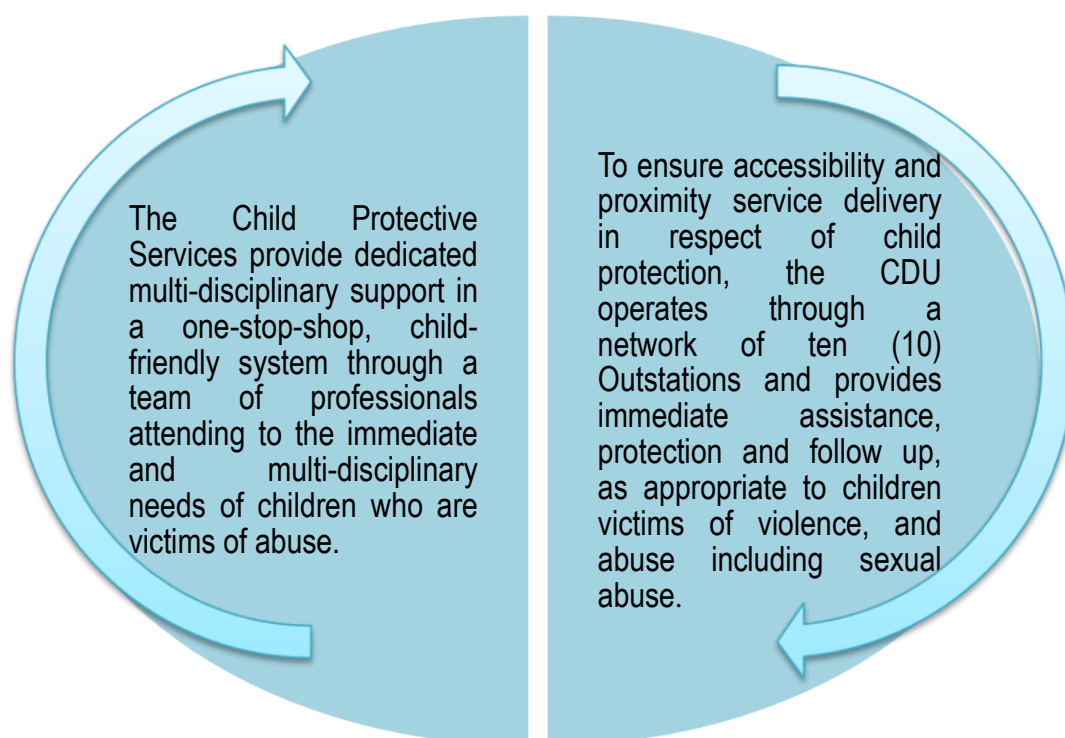
1.4.3. Child Development Unit

The Child Development Unit (CDU) is mandated to ensure that the survival, protection, development and participation rights of the child are upheld in accordance with the Convention on the Rights of the Child (CRC) and the African Charter on the Rights and Welfare of the Child.

The State has the obligation to ensure parental role wherever parents fail to do so and this role is ensured by the CDU.

Any child may be a potential victim of violence, and the CDU has to intervene promptly and is expected to provide comprehensive service delivery with a view to providing immediate assistance and follow up to the child.

Child Protective Services:



**Services
offered by the
CDU:**

-
1. Child Protectives Services
 2. Child Rehabilitation Services
 3. Back to Home Programme
 4. Rebonding Section
 5. Foster Care Programme
 6. Child Mentoring Programme
 7. Child Abduction Section
 8. Community Child Protection Programme
 9. Parental Empowerment Programme
-

**Child
Protectives
Services
across the
Island**

-
1. Port Louis
 2. Bambous
 3. Vacoas
 4. Rose- Hill
 5. Souillac
 6. Plaine-Magnien
 7. Flacq
-

1.4.4. Family Welfare and Protection Unit

The Family Welfare and Protection Unit (FWPU) provides a range of services including counselling, legal advice and support for victims of gender-based violence. It also manages hotline 139 for prompt assistance.

The FWPU operates through a network of Family Support Services (FSS) and Family Support Bureaux (FSBx) around the island.

Family Support Services

1. Rose Hill
 2. Abercrombie
 3. Port Louis
 4. Souillac
 5. Bambous
 6. Phoenix
-

Family Support Bureaux

1. Flacq
 2. Goodlands
-

1.4.5. Home Economics Unit

The Home Economics Unit (HEU) is committed to advancing social and economic empowerment through its capacity-building programmes. These programmes concentrate on fostering healthy lifestyles, strengthening family relationships and encouraging entrepreneurship. Additionally, the HEU supports food security and advocates for sustainable consumption and production practices within households through its Agricultural Women's Clubs. The Unit also manages four (4) specialized Regional Training Centres (The Home Economics Resource Centres).

Specialised Regional Training Centres and District Being Catered:		
	Plaine des Papayes Production Centre	1.Port Louis
		2.Riviere Du Rempart
		3.Pamplemousse
	Phoenix Home Economics Resources Centre	1.Black River
		2.Plaine Wilhems
	Quartier Militaire Home Economics Resource Centre	1.Moka
		2.Flacq
	Plaine Magnien Home Economics Resource Centre	1.Grand-Port
		2.Savanne

1.4.6. Psychological Services Unit

The Psychological Services Unit offers quality psychological services to victims of violence and also works with perpetrators of domestic violence to foster behavioural change.

The unit is also operating a Victim/Witness Support Service at the level of the Children's Court, to provide pre-trial and post-trial support to children involved in the criminal justice in order to diminish the level of anxiety and ensure psychological and emotional stability so as to improve their competency as witness during trial.

In line with section 66 of the Children's Act 2020, the unit has started implementing the Guardian Ad Litem Programme. The aim of this service is to ensure that the child's voice is heard in all decisions concerning court proceedings in which the child is involved and that the child's best interest is advocated for throughout the judicial proceedings.

1.4.7. Social Welfare Division

Social Welfare Centres were set up under the Social Welfare Centres Act 1961 with the objectives to further health, advance education, provide facilities for mental and physical training and generally for recreation and for social, moral and intellectual development.

The Social Welfare Division operates under the aegis of this Ministry since January 2017. It manages a network of 56 Social Welfare Centres scattered across the island. The centres are mostly located in rural areas to provide proximity service and serve all age-groups in local communities including children, youth, women, men, senior citizens and persons with disabilities, amongst others.

The main axes of intervention of a Social Welfare Centre are:

- (a) Sensitization Campaigns through Information, Education and Communication (IEC) programmes;
- (b) Capacity building and skills development programmes;
- (c) Sports, leisure and recreational activities;
- (d) Community Services; and
- (e) Marking National and International days.

Social Welfare Centres are used by other Ministries and agencies for their outreach programmes/services.

Social Welfare Centres serve as a meeting point for members of the community and clubs/associations/organisations of the respective locality.

Presently, 45 out of the 56 Social Welfare Centres are also used as **Evacuee Centres** in times of need like cyclone and natural calamities.

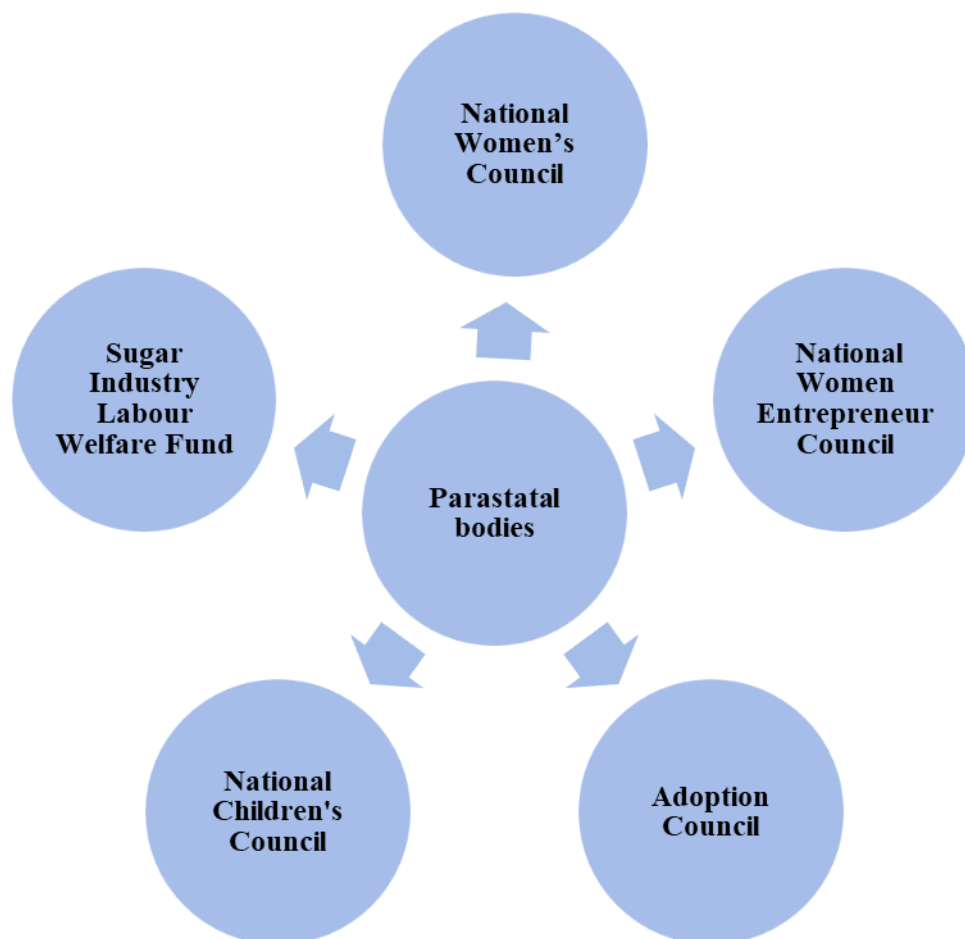
Furthermore, the Division has under its responsibility the Dressmaking section which is responsible for the empowerment of women through skills development courses at Social Welfare Centres, Community Centres and Elderly Day Care Centres.

1.4.8. Adoption Unit

The Adoption Unit acts as the focal point in the adoption of children from foreign countries. It also handles cases of legitimization of children having foreign nationalities and residing in Mauritius. The Adoption Unit is designated to deal with inter-country adoptions in accordance with the provisions of The Hague Convention on Inter-Country Adoption, 1993. Moreover, the Adoption Unit is mandated to oversee, coordinate, monitor and regulate in-country and inter-country adoptions. The principle of the Adoption Unit is to ensure that inter-country adoption takes place under conditions which help to guarantee the best adoption practices and elimination of abuses.

1.5 Parastatal Bodies

There are 5 parastatal bodies which operate under the aegis of the Ministry namely:



Each Parastatal Bodies with its specific objectives focus on women's empowerment, children's welfare and adoption processes.

The Sugar Industry Labour Welfare Fund (SILWF) engages in community-based programmes and manages amenities for pilgrims and Evacuee Centres.

Mauritius is signatory to various International and Regional Human Rights Instruments that speak of Gender Equality and Women's Empowerment, such as the Convention on the Elimination on All Forms of Discrimination Against Women; the Beijing Platform for Action; the Protocol to the African Charter on Human and Peoples' Rights on the Rights of Women in Africa; and the Sustainable Development Goals, in particular, Goal 5.

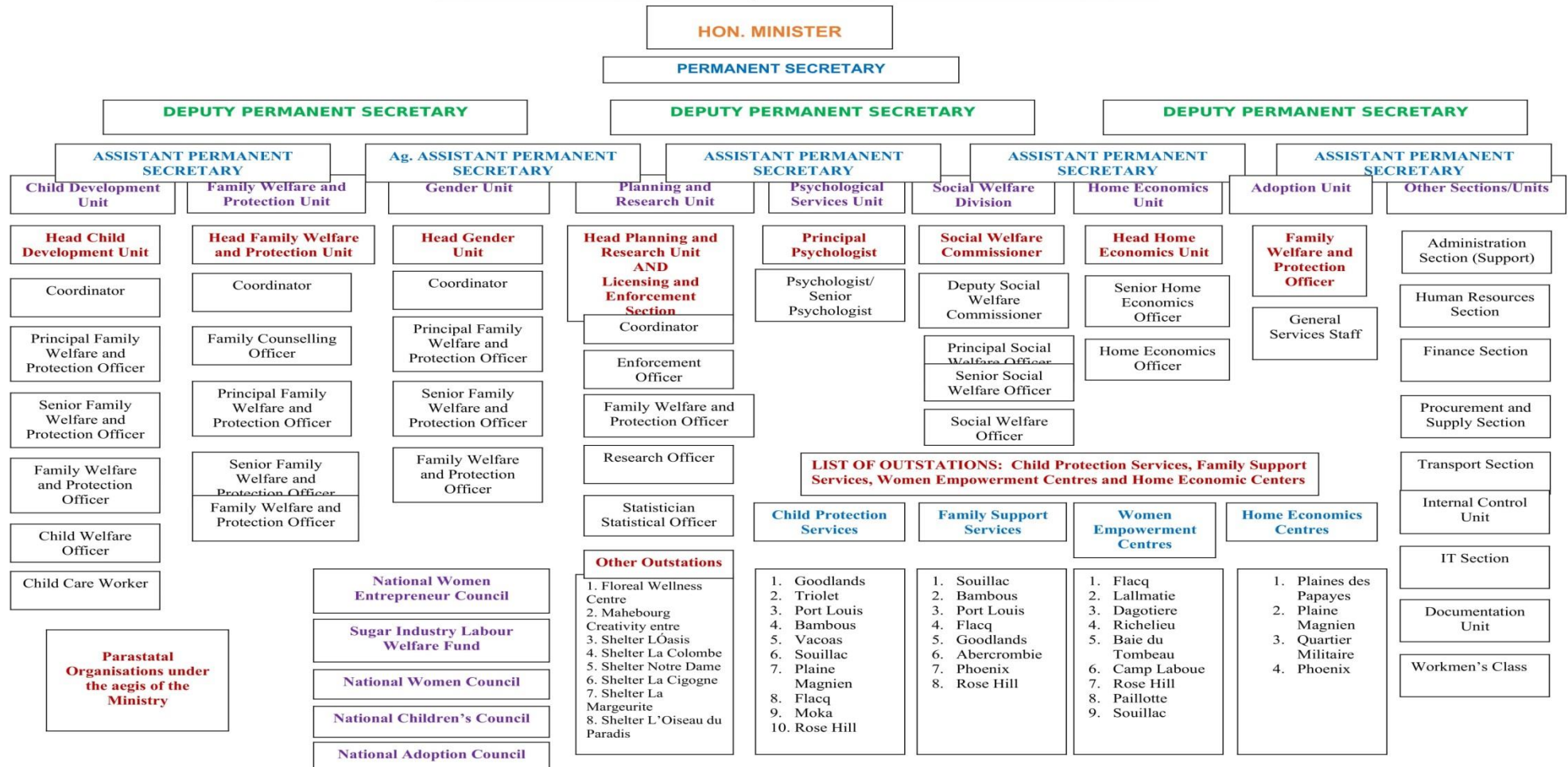
Over the years, the Ministry of Gender Equality and Family Welfare, has adopted a ***Human Rights-Based Perspective*** associated with inclusion, where men, women, girls and boys have the same opportunities and rights to access and participate in the socio-economic and political development processes.

The Ministry firmly believes that gender equality and the empowerment of all women and girls are key drivers in advancing sustainable development; and remains committed to equity and the integration of a gender perspective in its policies, programmes, projects, and service delivery as well as across all sectors to ensure an all-inclusive society, where no – one is left behind.

In light of same, this Ministry is providing efforts to mainstream gender in all planned actions in the public sector which will thereafter, be followed in other sectors, namely, Private Sector, Media, Academia, Civil Society's Organisations and Faith-based Organisations.

1.7 About Our People

MINISTRY OF GENDER EQUALITY AND FAMILY WELFARE



2.1 Major Achievements

Unit	Achievements
Planning and Research Unit	<ol style="list-style-type: none"> 1. The 6th High-Level Policy Dialogue with the European Union Delegation on Gender was organised with the European Union Delegation on 27 February 2024, where key conclusions and recommendations were examined and validated. 2. The "Statistics in Mauritius: A Gender Approach Report 2022" was published on 23 February 2024, which covers the period 2022 and provide critical insights into gender disparities and progress. 3. Early Childhood and Development Section - 177 Certificates of Registration for Child Day Care Centres were issued between 1 July 2023 and 30 June 2024, significantly expanding early childhood care services.
Gender Unit	<ol style="list-style-type: none"> 1. 58% of the recommendations of the National Gender Policy (2022–2030) implemented demonstrating enhanced effort to mainstream gender across various sectors. 2. Gender Mainstreaming replicated in Rodrigues through the Commission for Women's Affairs & Others. 3. HeForShe Clubs: Initiated at 25 Community Centres on 04 December 2023, to bring about male peer groups for reflection and take collective action for accelerated behavioural change. Since its launching till date, some 5,000 participants have been trained on the Gender Concept and Terminologies and women-related issues. 4. Technical Assistance being benefitted since May 2024 from the European Union through the recruitment of a Gender Expert for a period of 3 years to assist the Ministry in the gender mainstreaming agenda.

	5. Since July 2023, 700 members of Gender Cells and Officers of Line Ministries trained on the concept of gender and gender mainstreaming.
Family Welfare and Protection Unit	<p>1. 113 Output Indicators out of 156 of the National Strategy and Action Plan on Gender-Based Violence (GBV) implemented, marking significant progress in addressing GBV. The rest are in progress.</p> <p>2. The Family Support Services was launched in Bamboos to provide dedicated support to affected families.</p>
Child Development Unit	<p>1. 125 children successfully reintegrated into mainstream society through rehabilitative services.</p> <p>2. Launched 10 Parental Empowerment Resource Centres launched, enhancing support for parents across communities.</p>
Psychological Services Unit	Provided psychological support to over 10,000 cases, demonstrating a substantial commitment to mental health services within the community.
Social Welfare Division	Surpassed beneficiary targets by serving 249,582 individuals (target was 225,000), through community services, facility upgrades, and support during emergencies.
Child Adoption Unit	The adoption of 5 children from India was facilitated during 2023/2024.
Home Economics	<p>1. Types of MQA Recognized Courses: 16 courses (12–20 weeks' duration each).</p> <p>2. Number of Empowerment Programs: 1,254 programs conducted.</p> <p>3. Total Participants: 15,025 individuals engaged.</p> <p>4. Projects Implemented: 30 projects across various target groups.</p>

2.2 STATUS OF IMPLEMENTATION OF BUDGET MEASURES

Reporting Period: July 2023 to June 2024

MONITORING OF BUDGET MEASURES 2023-2024 (Non-Infrastructure)				
Budget Para	Budget Measure	Status Update/ Remarks	Impact/Key Performance Indicator	Target Impl. Date
60 (b)	To enhance access to child care and make our workplace more inclusive, the grant will be increased by 30 percent to Rs 650,000 for child day care centres to undertake upgrading works;	The funding agreement and amended guidelines was forwarded the Ministry of Finance, Economic Planning and Development (MOFEPD) for clearance/any actions deemed necessary.	Number of Child Day Care Centres benefitting from the grant	
B.14.	To promote women entrepreneurship, the role of National Women Entrepreneur Council will be reviewed to becoming the apex institution for women entrepreneurs	The final report from the Investment Climate Reform Facility is awaited.		
490	Furthermore, the monthly allowance granted under the Foster Care Scheme in respect of a child has increased Rs 8,000 to Rs12,000, and	Increase of monthly allowance of Rs12,000 has been implemented. New Criteria /guideline developed: Consultations were held with the Ministry of Health and Wellness regarding criteria for enhanced allowance of Rs15,000 for	Payment of allowance of Rs12,000 with effect from 01 July 2023 being done on a monthly basis.	Other charges-payment of allowances cleared on a monthly basis.



MONITORING OF BUDGET MEASURES 2023-2024 (Non-Infrastructure)

Budget Para	Budget Measure	Status Update/ Remarks	Impact/Key Performance Indicator	Target Impl. Date
	introduction of an enhanced allowance of Rs15,000 for a child with special needs.	a child with special needs on the basis of a medical report duly submitted by the Ministry of Health and Wellness, among others. Financial clearance was sought from the Ministry of Finance, Economic Planning and Development (MOFEPD) to proceed with the payment of the monthly allowance of Rs15,000. Upon obtaining the 'no financial objection', a list of children identified as special needs has been referred to the Ministry of Health and Wellness for medical examination. As per the latest updates, a Board of specialists has been set up and concerned foster parents have been invited to attend with their foster child for examination. Medical Reports from the Ministry of Health and wellness are being awaited to proceed further.		
B.12. (A)	An appropriate regulatory framework will be set up to regulate residential care	Drafting instructions were submitted to the State Law Office (SLO) on 01 September 2023.	(a) Consultations with all Government and Non-Government Agencies (including Rodrigues) completed.	01/12/24



MONITORING OF BUDGET MEASURES 2023-2024 (Non-Infrastructure)

Budget Para	Budget Measure	Status Update/ Remarks	Impact/Key Performance Indicator	Target Impl. Date
	institutions for victims of domestic violence and the framework on foster care will be reinforced.	Subsequently, a working draft was submitted by the SLO on 22 March 2024. Consultations with Government and Non-Government institutions, to be undertaken in light of the draft Domestic Abuse Bill are ongoing. Regulations for managing shelters for victims of domestic violence would be finalised and introduced following the proclamation of the Domestic Abuse Bill.	(b) Working draft on the new bill finalised with inputs from all stakeholders. (c) Final drafting instructions submitted to AGO for draft Bill (d) approval of Cabinet sought. (e) Bill is presented and passed in Parliament.	
268	National Adoption Bill will be introduced to provide a legal framework for both local and foreign adoption of children.	On 08 April 2024, queries from the State Law Office (SLO) on the Working Document of the Draft Child Adoption Bill and the Code Civil Mauricien (Amendment) Act were forwarded to the SLO. The SLO has already considered proposals from the Civil Status Office and an updated amended version of the Bill is awaited from the SLO. Further consultation will be carried out on the final	(a) Drafting Instructions to Attorney General Office (b) Consultation with stakeholders on the draft Child Adoption Bill. (c) Seeking Cabinet approval on the final draft Child Adoption Bill. (d) Introduction of the Bill in National Assembly	01/03/25

MONITORING OF BUDGET MEASURES 2023-2024 (Non-Infrastructure)				
Budget Para	Budget Measure	Status Update/ Remarks	Impact/Key Performance Indicator	Target Impl. Date
		updated draft Bill before seeking Cabinet approval. After Cabinet approval, the Bill would be introduced in the National Assembly.		
320	A Community Child Protection Programme in vulnerable areas to sensitize community members on the detection of child abuses	A capacity building programme was organised for around 200 officers and stakeholders on 13 and 28 May 2024 respectively in a view to re-engineer the District Child Protection Committees in the nine (9) districts of the country.		

MONITORING OF BUDGET MEASURES 2023-2024 (Non-Infrastructure) - NOT YET OPERATIONAL

Budget Para	Budget Measure	Funding (Rs M)	Key Milestones	Target Impl. Date	Status Update/Remarks
322	The Protection from Domestic Violence Act will be amended to include "recordings-sound-video" as a recognised form of testimony		Amendment of Protection from Domestic Violence Act by June 2022	Aug-22	<p>On 14 July 2023, Cabinet approved the drafting of a new legislation to replace the existing PDVA with a view to, inter alia, protect spouses from acts of domestic violence.</p> <p>The new legislation would be a comprehensive and multidisciplinary one, criminalising all forms of violence, and encompassing issues of prevention, protection, survivors' empowerment and support (health, economic, social, psychological), aiming at reinforcing the legal parameters to protect victims of domestic violence, making the perpetrator of domestic violence accountable for his or her behaviour or acts.</p> <p>The new Bill would also make provisions for</p>



					support and rehabilitative services to deter perpetrators from committing further acts of domestic violence. The powers of Enforcing Officers, Police Officers, amongst others, would be reinforced.
490	Furthermore, the monthly allowance granted under the Foster Care Scheme in respect of child will be increased from Rs 8,000 to Rs 12,000, and introducing an enhanced allowance of Rs 15,000 for a child with special needs.		(a)Make relevant Budgetary provision (done) (b)Review of the Scheme with new criteria /guidelines		This Ministry is awaiting reply from the Ministry of Health and Wellness to proceed ahead.



Implementation of Budget Measures – Ministry of Gender Equality & Family Welfare

Budget Para	Budget Measure	Key Milestone	Status Update/ Remarks
Non-Infrastructure Project			
268	National Adoption Bill will be introduced to provide a legal framework for both local and foreign adoption of children.	Introduction in the National Assembly	<p>The Civil Status Act in relation to child adoption have already been amended through the Finance Act 2024.</p> <p>The Ministry is waiting for an updated version of the draft child adoption bill from Attorney General Office.</p> <p>Further consultation will be carried out on the final updated draft bill before seeking cabinet approval. After Cabinet approval, the bill will be introduced in the National Assembly.</p>
61	To promote gender equality at all levels, listed companies shall have a minimum of 25 percent of women on their boards.	(a) Legal Amendments (Finance Bill) (b) Workshops/awareness	A Committee will be set up, chaired by the Permanent Secretary, with State Law Office, Companies Division and Mauritius Institute of Directors for implementation of this Budget Measure.
B.12 (A)	An appropriate regulatory framework will be set up to regulate residential care institutions for victims of domestic violence and the framework on foster care will be reinforced.	(a) Finalise Policy Paper (b) Amendments to Foster Care Regulations, if any (c) drafting of new bill (d) Finalisation and introduction of Bill to the National Assembly	<p>As part of the Regulatory Framework, a Draft Regulations for the Shelters Accommodating Women Victims of Domestic Violence and their Children has been worked out.</p> <p>Once the legislation on domestic violence is proclaimed, Cabinet</p>



			approval will be sought for the Regulations.
--	--	--	--

MONITORING OF BUDGET MEASURES 2023-2024 (Infrastructure)				
Budget Para	Budget Measure	Status Update/ Remarks	Key Milestones	Target Impl. Date
443 & 444 (a)	We have been able to make of Mauritius an example whereby the Government, the private sector and NGOs partner in the fight against poverty. To this end, Rs 500 million will be mobilized for the next 5 years to implement national social projects including: - Construction of residential care institutions for children in distress	This Ministry is currently in the process of identifying lands, from among state land vested in this Ministry that would be suitable for the construction of Home-Like Setting Residential Care Institutions.		
B.12. (B)	A Central Data Repository will be developed in respect of victims of different forms of violence, abuse and neglect to better coordinate interventions across different Government Agencies and NGOs for their protection and care.	The Central Informatics Bureau has been requested to provide a project manager for the preparation of project specification, Terms of Reference and Bidding Document for the project since 29.02.2024.		
473 & 474	The construction of the Community Wellness Centre at Gokhoola	Construction of Community Wellness Centre at Gokhoola: Construction work at the Centre is completed and has	100%	01/08/2024

MONITORING OF BUDGET MEASURES 2023-2024 (Infrastructure)				
Budget Para	Budget Measure	Status Update/ Remarks	Key Milestones	Target Impl. Date
	announced last year is well underway. Works for the construction of Community Wellness Centres at St Pierre and St Aubin will start soon.	<p>been handed over to SILWF in March 2024. Inauguration of the centre is tentatively scheduled for end of July 2024.</p>		
		<p>Construction of Community Wellness at St Pierre:</p> <p>(a) Design and Drawings have been modified and Bill of Quantities is under preparation by Ministry of National Infrastructure and Community Development (MNICD)</p> <p>(b) Provisional Project Request Form (PRF) based on similar project has been submitted to Parent Ministry for onward transmission to Ministry of Finance, Economic Planning and Development (MOFEPD) for approval.</p> <p>(c) Bids will be launched after approval of funds.</p>		01/08/2025
		<p>Construction of Community Wellness at St Aubin:</p> <p>(a) Design, Drawings and Bill of Quantities already prepared and submitted to MOFEPD for Financial Clearance</p> <p>(b) Bids will be launched after approval of funds</p> <p>(c) Financial clearance has been obtained. Cabinet approval would be sought to proceed with the construction of the Community Centre at St Aubin.</p>		01/08/2025

MONITORING OF BUDGET MEASURES 2023-2024 (Infrastructure)				
Budget Para	Budget Measure	Status Update/ Remarks	Key Milestones	Target Impl. Date
475	(d) Implement a Social Welfare Centre in Rose-Hill and upgrade the Montagne Ory Social Welfare Centre;	(i) Requirements sent to Management for Expression of Interest exercise; (ii) Procurement and Supply Unit has already launched invitation for bids. (iii) bids received (iv) Bid Evaluation Committee set up for selection of appropriate building (v) Exercise closed as no bids were substantially responsive. (vi) Invitation for bid relaunched (vii) One bid received and is under evaluation		24/04/2024
475	To promote community-based activities and for the welfare of citizens. (b) Upgrade the Creativity Centre at Mahebourg;	Revamping of the Creativity Centre to accommodate a shelter. (a) Beginning of work is expected by September 2024.	Funds available	01/09/2024
475	To promote community-based activities and for the welfare of citizens, (b) Upgrade the Creativity Centre at Mahebourg;	Start of works(a) Consultation with relevant stakeholders (b) Project Preparation (c) Design and Scope of works, BoQ (d) Seek relevant clearance (e) Launching of tender (f) Start of works		A survey was carried out by the Ministry of Gender Equality and Family Welfare Regarding upgrading works in March 2023. Issues have been identified. MNICD has been contacted for major construction works, for example cleaning of yard,

MONITORING OF BUDGET MEASURES 2023-2024 (Infrastructure)				
Budget Para	Budget Measure	Status Update/ Remarks	Key Milestones	Target Impl. Date
				perimeters around the centres, logging of trees, pull down walls and erect of walls amongst others.
475	(c) Construct a Community Centre at Stanley;	Operational (Dec 2023 August 2024) - 50% (a) Consultation with relevant stakeholders (b) Identification of Land (c) Design and Scope of works (d) Seek relevant clearances (e) Detailed Design/Drawings, BoQ		(c) Construct a Community Centre at Stanley: Surveys have been carried out for the preparation of designs and Bill of Quantities. Project Request Forms will be submitted after completion of designs and Bill of Quantities. Design and Bill of Quantities are being worked out. • Advance d copy of PRF sent to MOFEPD on 27.07.2023 • Meeting held with PS on 11.08.23 • Mail sent to SILWF to request 2 bill of

MONITORING OF BUDGET MEASURES 2023-2024 (Infrastructure)				
Budget Para	Budget Measure	Status Update/ Remarks	Key Milestones	Target Impl. Date
	<p>(d) (i) Implement a Social Welfare Centre in Rose- Hill.</p> <p>(ii) Upgrade the Montagne Ory Social Welfare Centre</p>	<p>A. Identification of Building. B. Operationalise the Social Welfare Centre.</p> <p>A. Determine feasible upgrading work to be carried out. B. Contract Allocation.</p> <p>C. Reopening of Social Welfare Centre</p>		<p>quantities (BOQ) on 21.08.2023 Follow up is being maintained regarding submission of BOQ.</p> <p>2 bidding exercises carried out on 15 January 2024- both responsive On 26 April 2024 1 bid received but non-conclusive.</p> <p>First Survey by MNI and CD done.</p>
475	(e) Revamp community centres at Riche Mare, Coromandel and Camp Yoloff into community wellness centres.	<p>(a) Consultation with relevant stakeholders (b) Identification of Land (c) Design and Scope of works (d) Seek relevant clearances Detailed Design/Drawings, BoQ</p>		<p>1.Centres to be revamped have already been identified and the land has already been vested to the Ministry of Gender Equality and Family Welfare. 2.Surveys are being carried out for design and scope of works. Project Request Form will be submitted after</p>

MONITORING OF BUDGET MEASURES 2023-2024 (Infrastructure)				
Budget Para	Budget Measure	Status Update/ Remarks	Key Milestones	Target Impl. Date
				<p>the preparation of scope of works and Bill of Quantities.</p> <p>3.3. Project Request Forms will be submitted after the preparation of scope of works and Bill of Quantities- Sept 2023"</p>

STATUS ON IMPLEMENTATION OF KEY ACTIONS FY 2023/2024

Outcome		Outcome Indicator	Target 2023/24	Achievement as at 30 June 2024	Remarks
(i) A more gender inclusive society		Percentage of reported GBV victims provided with required assistance	100%	100%	All support services are provided to victims as and when required.
(ii) Provision for better care, protection and assistance to children					
(iii) Socially cohesive society through family focused policies		Number of child victims rehabilitated	150	223	
Delivery Unit	Main Service	Key Performance Indicator	Target 2023/24	Achievement as at 30 June 2024	Remarks
Gender Unit, Home Economics Unit & National Women's Council	Empowerment of women in the social and economic spheres	Implementation of National Gender Policy 2022-2030 Action Plan	25%	58%	<p>The 58% represents completion of the setting up of National Steering Committee on Gender mainstreaming and setting up of Inter-Ministerial Gender Technical Working Group.</p> <p>As regards the targets yet to be achieved, actions are being taken for the reinforcement of Gender Cell, development of Action Plan for Public Sector and setting up and launching of</p>



					Gender Technical Working Group on Gender Mainstreaming in Private Sector, Academia, CSO and replication of Gender Monitoring Mechanism in Rodrigues.
		Number of women empowerment centres revamped into wellness centres	1	1	Floreal Wellness Centre for women
		Number of participants attending Empowerment Programmes Information, Education and Communication programmes organized by the Gender Unit for women and girls; Gender Focal Points and Members of the HeforShe Clubs	37,500	40,551 12, 331	The statistics consist of: Adult Literacy Programmes, Dressmaking courses, activities by Women's Association Unit, Projects, training on Gender Concepts/ mainstreaming in Public Sector.
Family Welfare and Protection Unit	Implementation of family focused policies and addressing GBV	Percentage of reported GBV victims provided with holistic assistance	90%	100%	



Child Development Unit	Implementation of Back-to-Home Programme	Number of children re-integrated into their biological families and next to kin (Cumulative)	235	289	
	Extension of the Foster Care Programme	Number of children placed in foster care families	20	5	Target could not be achieved due to resource constraints. Additionally, some prospective placements of Foster children did not proceed further at Children's Court for finalisation, though all steps and procedures were completed at the last moment of process, reintegration were considered successfully.
National Children's Council	Run Programmes for development and protection of children/teenagers	Number of children/teenagers benefiting from the Programmes	5,000	9,072	July 2023 to 30 June 2024
	Parental Training Programme to enhance parent-child relationship	Number of parents trained	100	170	July 2023 to 30 June 2024
Social Welfare Division and Sugar Industry	Community Development Programmes at the Social Welfare Centres and	Number of beneficiaries of Welfare and Empowerment Programmes	250,000	694,517	SWD: 249,582 SILWF: 444,935



Labour Welfare Fund	Community Centres				
---------------------------	----------------------	--	--	--	--



2.3 MANAGEMENT, CITIZEN ORIENTED INITIATIVES & GOOD GOVERNANCE

The system of internal control is designed to provide reasonable assurance regarding the effectiveness and efficiency of operations at the Ministry; safeguard of assets and data of the Ministry.

There is also an Audit Committee appointed to support the Accounting Officer to monitor corporate governance and control system in the Ministry.

Composition of the Audit Committee for year 2023-2024:

Chairperson	Ag Deputy Permanent Secretary, Ms. Daveena Jugroop
Members	Coordinator, Mrs. Marie Kate Martina Sharaon Ah Nien Kotadoo
	Coordinator, Mr. Pooshan Boojharut
Secretary	APS, Mr. Afzal Pirbacosse

Meetings were held on 29 August 2023, 21 September 2023, 13 June 2024, 18 June 2024 and 28 June 2024.

The duly signed Performance Contract has already been forwarded on 26 September 2023 to the Office of the Public Sector Governance for financial year 2023/2024. The Status Report of the Audit Committee for the quarterly ended 30 June 2024 has already been submitted to the Office of the Public Sector Governance.

The ICAC initiated the Public Sector Anti-Corruption Framework in 2009 to enable public bodies to take up the challenge to build corruption resistance and enhance public trust in their respective organization. The Anti-Corruption Committee set up in Ministries are expected to drive the project. This Ministry has developed an Anti-Corruption Policy which sets out the full commitment of this Ministry for the deterrence and detection of corruption and for adherence to a culture of integrity.



Strengthening Family Support and Child Protective Services

To better safeguard children the Ministry has expanded its Child Protective Services (CPS) by establishing an additional centre at Triolet bringing the total to 10 CPS operational across the Island.

In line with **National Strategy for the Elimination of Gender Based-Violence**, the Ministry has established an additional Family Support Service (FSS) at Bambous. Services are now available at 6 FSS and 2 Family Support Bureaux.

The Community Development Association usually meets once monthly to discuss about the activities that the Community Centre may organise to meet the need and aspiration of the people in the village or the locality. Activities may be summarised ECSEER Programme as follows: *E: Educational, C: Cultural, S: Social, E: Economic and R: Recreational*.

1. Educational

Educational activities are organised to empower and sensitize the community on various social issues such as Drugs abuse, Road Safety, Environment Awareness, Healthy Life Style etc.

Some of the activities may be summarized as follows: -Literary, Lectures, Forums, Seminars, Literacy, Home Economics, Sewing, Dressmaking, Arts and Crafts, Scholarships, Technical Training, Ethics, Civics, Health, Audio-Visual and Net PC Programme

2. Cultural

These activities relate to enhance cultural diversity in the community and also promote Cultural and Societal Values among the inhabitants. It also creates a platform for promoting local talents and creativity through songs, dances, theatre, instrumental music, amongst others.

3. Social

Social activities focus on the promotion of Social Cohesion, Unity and Peace, Mutual Understanding, among the community and the activities include the following:

- i. Welfare of Society;
- ii. Child Development and Protection;
- iii. Care of Senior Citizens;
- iv. Amenities (tarpaulins, chairs etc.);
- v. Self-Help Project;
- vi. Protection of the Environment; and
- vii. Emergency Shelter for victims of cyclone & other natural disasters; amongst others



2.4 IMPLEMENTATION PLAN- DIRECTOR OF AUDIT COMMENTS

Report 2023/2024

SN	Issues raised	Actions Taken / Proposed Measures
1	<p>The Back to Home Programme</p> <p>It was observed that the target set for financial year 2021-2022 was reduced. There was a decrease from 210 to 162 children reintegrated in their families in the Financial Year 2022-2023.</p>	<p>The reintegration process is dealt with the utmost seriousness and ensure that the family environment is conducive for the return of the children. The reason for the decrease in the reintegration numbers were due to unfavourable psychological reports, parents being alleged perpetrators or are alcoholic/ drug addict.</p> <p>Also, in some cases the Children's Court Magistrates' objects for the children reintegration for the following reasons:</p> <p>(i) the children refuse to return back into their family setting.</p> <p>(ii) the Court request additional enquiries or Psychological Assessment prior the reintegration.</p> <p>(iii) the family fails to assure the Court that they can take charge of the child.</p>
	<p>Foster Care Programme</p> <p>(i) The target for the financial year 2022-2023 was reduced by 50%, representing a significant gap between the target and outcome achieved. Recognising the challenges faced in the Financial Year 2021-2022, the KPI was revised to 20 children. However, despite the placement of 20 children in the foster care, 4 were subsequently removed from their foster families.</p> <p>(ii) The Foster Care Unit was</p>	<p>(i) Due to the general lockdown in Mauritius in 2021, site visits and reporting to Court on prospective foster families could not be effected and home visit is an essential factor for the Foster Care Programme.</p> <p>Even though the budget allocated was less to accommodate 40 children in foster care homes, for that particular period 22 placement were effected which comprised 20 children (4 were removed from their respective foster home, however, 2 of them were anew placed in 2 other foster families). Hence, total number children placed were 20, 4 were removed from their foster families and 2 from the 4 removed were anew placed in 2 other foster families.</p>



not successful in canvassing new applicants of foster homes.

(iii) Targets should be monitored and reasons for non-achievement goals should be analysed.

(ii) Sensitisation campaigns in canvassing new applicants of foster families is an ongoing feature of the Training Unit.

For the period 2022-2023, about 65 campaigns have been carried out and 12 new foster home were registered under the Child (Foster Care) Regulations 2022.

It is also to be noted that the new FCAC came into operation only on July 2023. Aggressive Sensitisation campaigns to canvas new applicants were carried out. The 12 new foster homes mentioned above were done on an administrative basis which intervention was not to be sustained pending the new FCAC as per the law.

(iii) The proposed KPI of 40 for 2021-2022 was projected with the contention that funding and resources would be provided to achieve the set target.

For the Financial Year 2021-2022, financing was not made available to cater to placements as per KPI set.

Moreover, the KPI for 2021-2022 was set taking into consideration that recruitment of 10 Family Welfare and Protection Officers was in process for that period and FWPOs (at least four) would have been posted to the Foster Care Division to supplement the only three FWPOs posted in the division.

It is to be noted that in the Budget 2023-2024, provision for the foster care monthly allowance payable has increased to Rs 12,000/- and Rs 15,000/- for children with special needs. This initiative might encourage more foster parents to join the Foster Care Programme.



3 Child Day Care Centres (CDCCs) –Still operating despite ordered to cease operation.

(i) As of September 2023, only 600 letters were sent to CDCC to request them to register or to immediately cease operations as they were not compliant with the CDCC Regulation 2022. With regards to the remaining 513 CDCC their BRN were issued, it could not be ascertained whether any follow up was done by the MGEFW.

(ii) As of October 2023, only 24 cases out of 73 CDCCs which were ordered to cease operations were referred to the Commissioner of Police for follow up. It was reported that 3 CDCCs were still in operation.

(i) The Officers of the Ministry scrutinized the list sent by Companies and Business Registration Department (CBRD) and 513 entries out of the 1308 CDCCs were duplicates. Furthermore, 600 letters were issued to the CDCCs out of which only 105 replied.

(ii) All letters sent to the CDCCs to cease operations are being copied to the Commissioner of Police and a list of CDCCs to cease of operations is being sent quarterly to the Commissioner of Police. Updated information on a monthly basis regarding the status of the CDCCs will be requested from the Commissioner of Police.

3.1 Financial Highlights

As per the budget Estimates, the Ministry has 5 votes under its control namely:

- 20-101: General
- 20-102: Women's Empowerment and Gender Mainstreaming
- 20-103: Child Protection, Welfare and Development
- 20-104: Family Welfare and Protection from Gender-Based Violence
- 20-201: Social Welfare and Community-Based Activities



Figure 1 below shows budget proportion under vote item 20-101 (General) for the year 2022/2023 and 2023/2024.

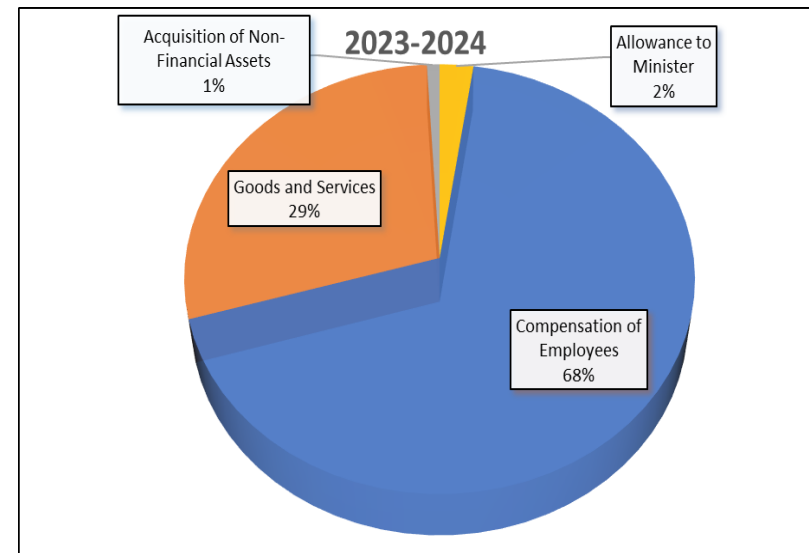
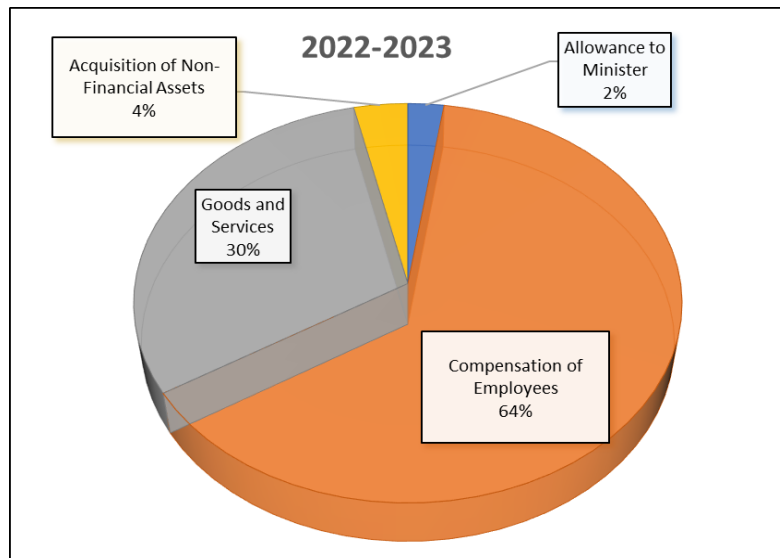


Figure 2 below shows budget proportion under vote item 20-102 (Women's Empowerment and Gender Mainstreaming) for the year 2022/2023 and 2023/2024.

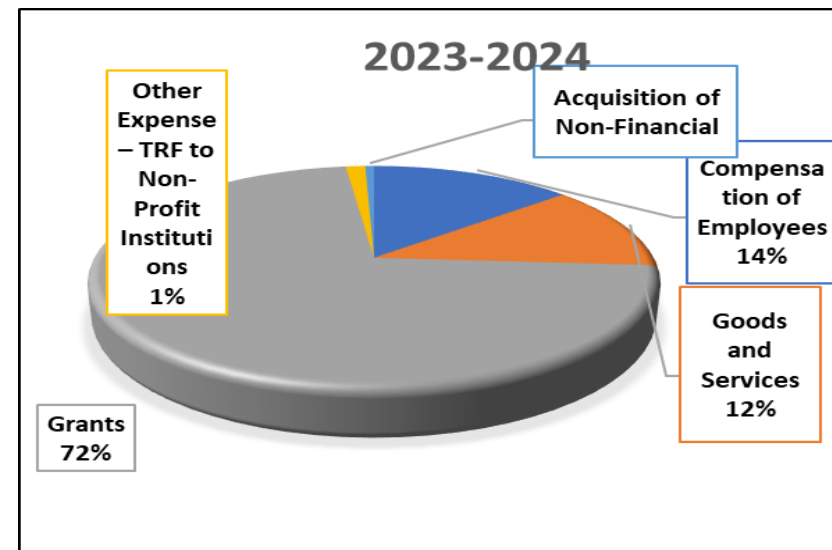
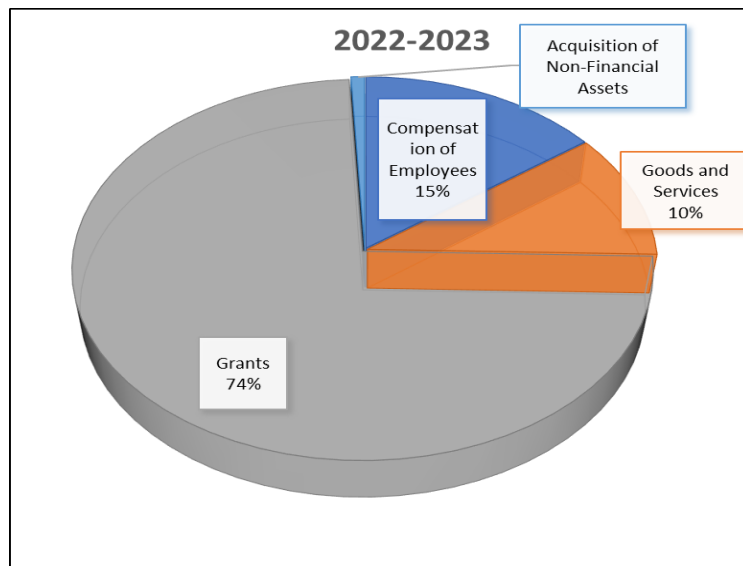


Figure 3 below shows budget proportion under vote item 20-103 (Child Protection, Welfare and Development) for the year 2022/2023 and 2023/2024.

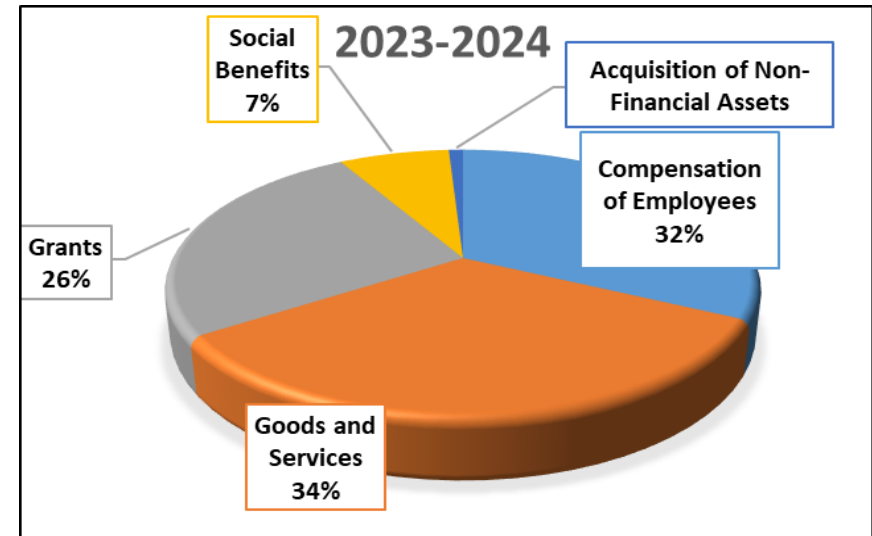
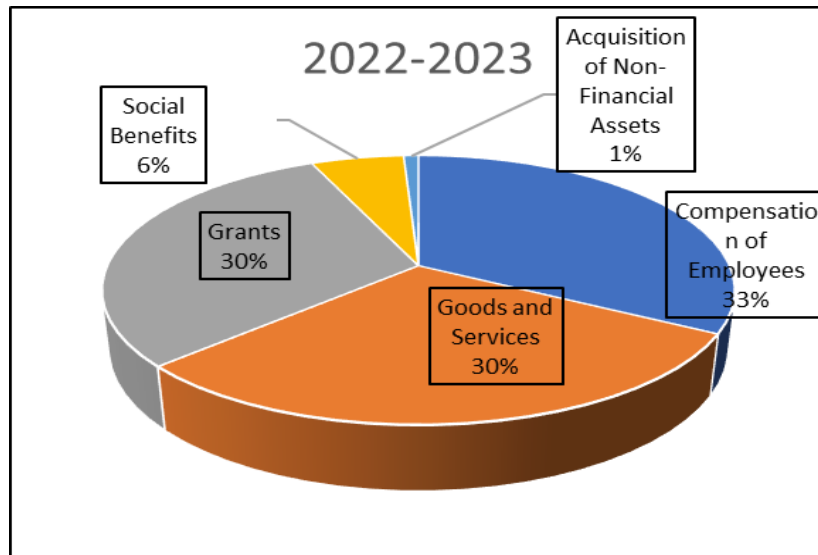


Figure 4 below shows budget proportion under vote item 20-104 (Family Welfare and Protection from Gender-Based Violence) for the year 2022/2023 and 2023/2024.

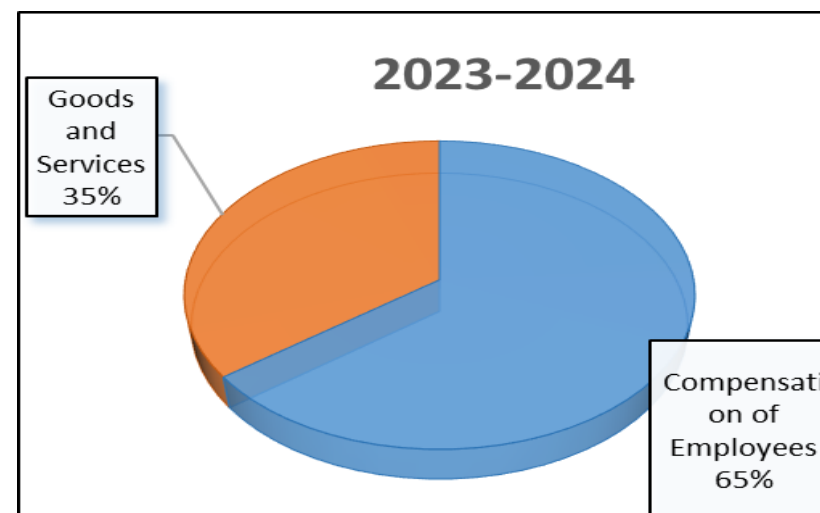
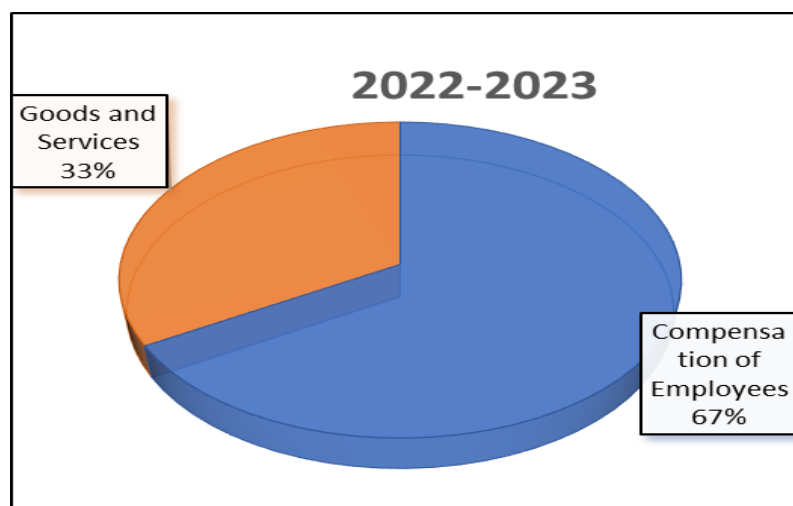
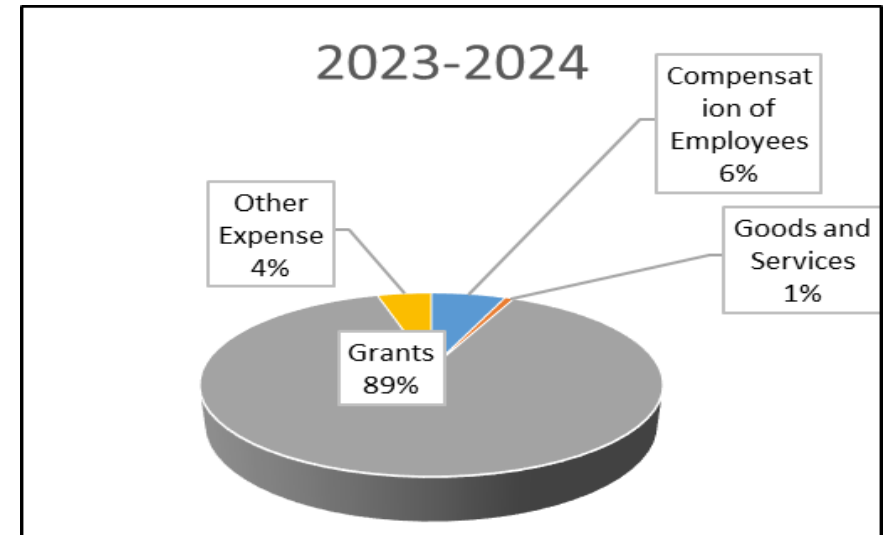
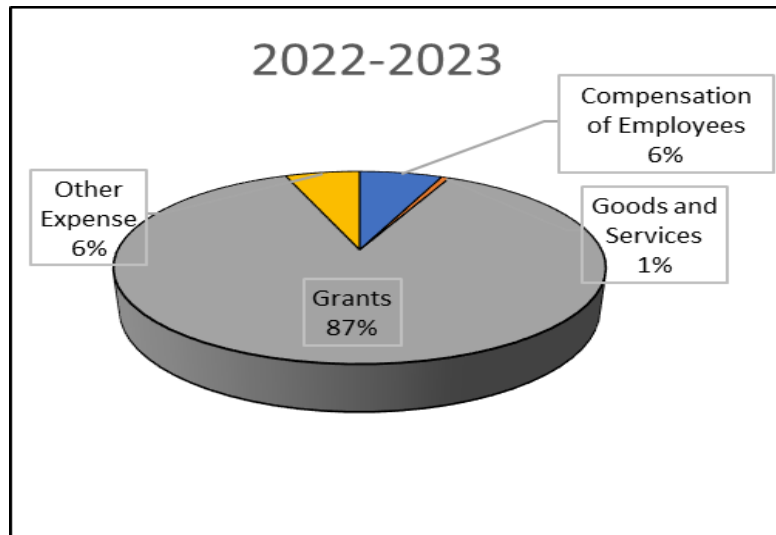


Figure 5 below shows budget proportion under vote item 20-2 (Social Welfare and Community Based- Activities) for the year 2022/2023 and 2023/2024.



3.2 Statement of Revenue and Expenditure

Statement of Expenditure 20- 101 – GENERAL				
HEAD/SUB-HEAD OF EXPENDITURE	2022- 2023		2023-2024	
	ACTUAL		ESTIMATES	
	(Rs M)		(Rs M)	
Allowance to Minister	2.4		2.4	2.4
Compensation of Employees	65.7	65.7	73.61	69.7
Goods and Services	31.2	31.2	32.95	29.3
Acquisition of Non-Financial Assets	3.6	3.6	1	0.9
Total	102.9		109.96	102.3
20- 102 – WOMEN'S EMPOWERMENT AND GENDER MAINSTREAMING				
HEAD/SUB-HEAD OF EXPENDITURE		2022- 2023	2023-2024	2023- 2024
		ACTUAL	ESTIMATES	ACTUAL
		(Rs M)	(Rs M)	(Rs M)
Compensation of Employees		21.5	25.4	20.8
Goods and Services		15.4	24	19.0
Grants		107.1	112.0	109.8
Other Expense – Transfers to Non-Profit Institutions		0	2.3	2
Acquisition of Non-Financial Assets		1.2	1.0	0.9
Total		145.2	165.1	152.8

20-103 - CHILD PROTECTION, WELFARE AND DEVELOPMENT			
HEAD/SUB-HEAD OF EXPENDITURE	2022-2023	2023-2024	2023-2024
	ACTUAL	ESTIMATE S	ACTUAL
	(Rs M)	(Rs M)	(Rs M)
Compensation of Employees	58.5	66.7	62.0
Goods and Services	53.5	71.9	64.3
Grants	53.9	50.5	50.1
Social Benefits	10	15	14
Acquisition of Non-Financial Assets	1.6	11.8	1.8
Total	177.5	215.9	192.0
20-104 – FAMILY WELFARE AND PROTECTION FROM GENDER-BASED VIOLENCE			
HEAD/SUB-HEAD OF EXPENDITURE	2022-2023	2023-2024	2023-2024
	ACTUAL	ESTIMATES	ACTUAL
	(Rs M)	(Rs M)	(Rs M)
Compensation of Employees	29.7	33.2	29.6
Goods and Services	14.8	21.2	16.1
Acquisition of Non-Financial Assets	0	0	0
Total	44.5	54.4	45.7
20-2 - SOCIAL WELFARE AND COMMUNITY BASED-ACTIVITIES			
HEAD/SUB-HEAD OF EXPENDITURE	2022-2023	2023-2024	2023-2024
	ACTUAL	ESTIMATES	ACTUAL
	(Rs M)	(Rs M)	(Rs M)
Compensation of Employees	24.9	27.0	24.6
Goods and Services	2.4	3.7	3.0
Grants	333.7	359.0	352.2

Other Expense	22.4	21.5	17.9
Acquisition of Non-Financial Assets	0.05	0	0.00
Total	383.45	411.2	397.70
	853.45	956.56	890.50

4.1 Trends and challenges

Today, Mauritius is more than ever determined to make every possible effort to incorporate a gender perspective into all policies and programmes.

Gender Equality

Mauritius continues to make progress in terms of gender parity. According to the Global Gender Gap Report 2022, Mauritius improved its ranking from 110th in 2021 to 105th in 2022 among 146 countries worldwide.

The strategies and innovative approaches recommended in the National Gender Policy (2022 to 2030) are being implemented to drive and support gender equality goals. The Ministry will extend the process of Gender Mainstreaming to four (4) other Sectors, namely, the Private Sector, Academia, Media and Civil Society Organisations.

Gender-Based Violence

In line with the recommendation for the setting up of a One-Stop Assistance Centre from the National Strategy and Action Plan of the High-Level Committee for the Elimination of Gender-Based Violence, the Family Support Services was launched in Abercrombie on 26 November 2022. A Standard Operating Procedure (SOP) was signed by the Ministry of Gender Equality and Family Welfare and Mauritius Police Force wherein duties of Officers of the Family Welfare and Protection Unit (FWPU) of the MGEFW and Brigade pour la Protection des Famille (BPF) are clearly elaborated.

Subsequent to the Family Support Service (FSS) at Abercrombie, other FSSs were made operational in Port Louis, Rose Hill, Phoenix, Souillac and Bambous where Officers of the FWPU of the MGEFW and BPF work under the same premise. Officers of the BPF focus on the law enforcement aspect while officers of the FWPU work on the provision of psycho-social support to survivors of domestic violence.

Currently, there are 6 FSS operational but with Phase II of the setting up of the FSS, there will be 5 additional FSS.

❖ **The main challenges are:**

- Under reported cases of domestic violence and erosion of values.
- Strength data collection mechanism for the design of gender-responsive and evidence-based policies and programmes.
- Reinforcement of the Gender Mainstreaming Strategy and embedding a gender perspective. at all stages and levels of policies, programmes and projects.

❖ **Means to address challenges**

- Budget advocacy and recruitment for better implementation of programmes, projects and actions plan
- Setting up of a Gender-Based Violence Information System.

Child Protection and Welfare

From July 2023 to June 2024, 27457 calls were recorded through the Integrated Support Center of Phoenix. The total number of cases of child abuse reported at the level of the Child Development Unit were 4986 for the period July 2023 to June 2024.

❖ **The main challenges are:**

- Capacity constraints for the implementation of programmes, projects and action plans.
- Complexity and magnitude of cases of child abuse.

❖ **Means to address challenges**

- Provide more training to Officers in order to enhance their skills.
- Recruitment of Family Welfare and Protection Officers.
- Strengthening of Multi agency collaboration to ensure a coordinated response to Child Abuse cases.

4.2 Strategic Direction 2024-2025

Bridge the gender gap

- Ensure a more equitable society and sustain the replication of gender mechanism in Rodrigues and provide assistance in development of the Rodrigues Gender Policy.
- Engage the Private Sector, Academia, Media and Civil Society Organisations for gender mainstreaming in their processes, programmes, projects and activities.

Enhance Family Well-being

- Improve Family Welfare.
- Extend the Family Support Services for holistic services to victims of domestic violence, in collaboration with the BPF.
- Set up a Model Shelter for women and girls' victims of GBV and to cater for emergency accommodation in shelters.
- Better support to victims of domestic violence and engage with the community, religious leaders, youth and service.
- Providers for a shared understanding of GBV through Sensitisation and awareness raising campaigns Implementation of the Costed National Action Plan on Family
- Sensitisation programmes for families to cope with climate change.
- Finalisation of the Domestic Abuse Bill.

Build Resilience in children and fulfil children's rights

- Sustain the Foster Care Programme to cater for children with special needs and reinforcement of existing programmes.
- Revisit the model of Residential Care Institution to include family style small scale residential care settings for children for better personalised care for their overall well-being.
- Introduce the Adoption Bill in the National Assembly.
- To set up a pool of Guardian Ad Litem.
- Reform of the Child Service

