

REPUBLIC OF MAURITIUS

**STATISTICS
IN
MAURITIUS**

A GENDER APPROACH

**MINISTRY OF GENDER EQUALITY, CHILD DEVELOPMENT
AND FAMILY WELFARE**

DECEMBER 2015

REPUBLIC OF MAURITIUS

**STATISTICS
IN
MAURITIUS**

A GENDER APPROACH

	<u>PAGE</u>
INTRODUCTORY NOTES	7 - 11
CONCEPTS AND DEFINITIONS	12 & 13
SOURCE OF DATA	13
SYMBOLS & ABBREVIATIONS USED	13

LIST OF TABLES

<u>TABLE NO.</u>	<u>DESCRIPTION</u>	
SECTION 1 - SUMMARY STATISTICS		
1.1	Basic facts - Republic of Mauritius, 2009 - 2014	14
SECTION 2 - POPULATION		
2.1	Mid-year resident population by age and sex, Republic of Mauritius, 2008 - 2014	15
2.1a	Mid-year resident population by age and sex, Island of Mauritius, 2008 - 2014	16
2.1b	Mid-year resident population by age and sex, Island of Rodrigues, 2008 - 2014	17
2.2	Mid-year resident population by geographical district, Republic of Mauritius, 2008 - 2014	18
2.2a	Percentage distribution of mid-year resident population by geographical district, Republic of Mauritius, 2008 - 2014	19
2.3	Number and percentage distribution of resident population (15 years and above) by marital status and sex, Republic of Mauritius, 1990, 2000 & 2011 Population Censuses	20
2.3a	Number and percentage distribution of resident population (15 years and above) by marital status and sex, Island of Mauritius, 1990, 2000 & 2011 Population Censuses	21
2.3b	Number and percentage distribution of resident population (15 years and above) by marital status and sex, Island of Rodrigues, 1990, 2000 & 2011 Population Censuses	22
2.4	Vital statistics, Republic of Mauritius, 2008 - 2014	23
2.4a	Vital statistics, Island of Mauritius, 2008 - 2014	23
2.4b	Vital statistics, Island of Rodrigues, 2008 - 2014	23
2.5	No of widowed by sex, Republic of Mauritius, 1990, 2000 & 2011 Population Censuses	24
2.5a	No of widowed by sex, Island of Mauritius, 1990, 2000 & 2011 Population Censuses	25
2.5b	No of widowed by sex, Island of Rodrigues, 1990, 2000 & 2011 Population Censuses	26
2.6	Selected rates, Republic of Mauritius, 2008 - 2014	27
2.6a	Selected rates, Island of Mauritius, 2008 - 2014	27
2.6b	Selected rates, Island of Rodrigues, 2008 - 2014	27
2.7	Life expectancy (years) at selected ages & sex, Republic of Mauritius, 2009 - 2013	29
2.8	Sex ratio for the Republic of Mauritius, Island of Mauritius & Island of Rodrigues, 1990, 2000 & 2011 Population Censuses	29

<u>TABLE NO.</u>	<u>DESCRIPTION</u>	
SECTION 3 - HEALTH		
3.1	Number of deaths and death rates, Republic of Mauritius, 2009 - 2014	30
3.1a	Number of deaths and death rates, Island of Mauritius, 2009 - 2014	31
3.1b	Number of deaths and death rates, Island of Rodrigues, 2009 - 2014	32
3.2	Number of deaths by cause, Republic of Mauritius, Island of Mauritius and Island of Rodrigues, 2014	33
3.3	Infant deaths by cause and sex, Republic of Mauritius, 2010 - 2014	34
3.3a	Infant deaths by cause and sex, Island of Mauritius, 2010 - 2014	35
3.3b	Infant deaths by cause and sex, Island of Rodrigues, 2010 - 2014	36
3.4	Infant deaths by selected age and sex, Republic of Mauritius, 2009 - 2014	37
3.4a	Infant deaths by selected age and sex, Island of Mauritius, 2009 - 2014	37
3.4b	Infant deaths by selected age and sex, Island of Rodrigues, 2009 - 2014	37
3.5	Number and percentage of current users of Family Planning Methods, Republic of Mauritius, as at 31st December, 2010 - 2014	38
3.5a	Number and percentage of current users of Family Planning Methods, Island of Mauritius, as at 31st December, 2010 - 2014	39
3.5b	Number and percentage of current users of Family Planning Methods, Island of Rodrigues, as at 31st December, 2010 - 2014	40
3.6	Immunisation coverage rate (Government Services), 2012 - 2014	41
3.7	Number of new cases of HIV/AIDS and deaths, 2011 - 2014, Republic of Mauritius	41

SECTION 4 - EDUCATION

4.1	Main indicators , Republic of Mauritius, 2010 - 2014	42
4.1 (c'td)	Main indicators , Republic of Mauritius, 2010 - 2014	43
4.2	Government expenditure on education, Republic of Mauritius, 2010 - 2014	43
4.3	Total enrolment and percentage enrolment by level and sex, Republic of Mauritius, 2009 - 2014	44
4.3a	Total enrolment and percentage enrolment by level and sex, Island of Mauritius, 2009 - 2014	44
4.3b	Total enrolment and percentage enrolment by level and sex, Island of Rodrigues, 2009 - 2014	44
4.4	Enrolment in pre-primary, primary & secondary schools by standard/form & sex, Republic of Mauritius, 2012 - 2014	45
4.5	Enrolment and pass rates by sex, Republic of Mauritius, 2008 - 2014	46
4.5a	Enrolment and pass rates by sex, Island of Mauritius, 2008 - 2014	46
4.5b	Enrolment and pass rates by sex, Island of Rodrigues, 2008 - 2014	46
4.6	Number of teachers in primary and secondary schools, Republic of Mauritius, 2008 - 2014	47
4.6a	Number of teachers in primary and secondary schools, Island of Mauritius, 2008 - 2014	47

<u>TABLE NO.</u>	<u>DESCRIPTION</u>	
4.6b	Number of teachers in primary and secondary schools, Island of Rodrigues, 2008 - 2014	47
4.7	Percentage distribution of population 15 years & above by educational attainment & sex, Republic of Mauritius, 2000 & 2011 Population Censuses	48
4.7a	Percentage distribution of population 15 years & above by educational attainment & sex, Island of Mauritius, 2000 & 2011 Population Censuses	49
4.7b	Percentage distribution of population 15 years & above by educational attainment & sex, Island of Rodrigues, 2000 & 2011 Population Censuses	50

SECTION 5 - EMPLOYMENT

5.1	Percentage distribution of the population aged 16 years and over by activity status, Republic of Mauritius, 2009 - 2014	51
5.2	Percentage distribution of the population aged 16 years and over by major occupational group and sex, Republic of Mauritius, 2009 - 2014	52
5.3	Percentage distribution of the employed population aged 16 years and over by industrial sector and sex, Republic of Mauritius, 2009 - 2014	53
5.4	Percentage number of income earners by monthly income range and sex, Republic of Mauritius, 2009 - 2014	54
5.5	Employment in Government Services by occupation and sex, Republic of Mauritius, 2010 - 2014	55
5.5 (ct'd)	Employment in Government Services by occupation and sex, Republic of Mauritius, 2010 - 2014	56
5.5a	Employment in Government Services by occupation and sex, Island of Mauritius, 2010 - 2014	57
5.5a (ct'd)	Employment in Government Services by occupation and sex, Island of Mauritius, 2010 - 2014	58
5.5b	Employment in Government Services by occupation and sex, Island of Rodrigues, 2010 - 2014	59
5.5b(ct'd)	Employment in Government Services by occupation and sex, Island of Rodrigues, 2010 - 2014	60
5.6	Number of members at the National Legislative Assembly by year of election & sex, 1987 - 2014	61
5.6a	Number of members at the Municipal Council by year of election & sex, 1985 - 2015	61
5.6b	Number of members at the Village Council by year of election & sex, 1986 - 2012	61
5.6c	Number of members at the Rodrigues Regional Assembly by year of election & sex, 2002, 2006 & 2010	61

SECTION 6 - DISABILITY

6.1	Disabled population and disability prevalence by age and sex, Republic of Mauritius, 2000 & 2011 Population Censuses	62
6.1a	Disabled population and disability prevalence by age and sex, Island of Mauritius, 2000 & 2011 Population Censuses	63
6.1b	Disabled population and disability prevalence by age and sex, Island of Rodrigues, 2000 & 2011 Population Censuses	64
6.2	Disabled population and disability prevalence by type of disability and sex, Republic of Mauritius, 2000 & 2011 Population Censuses	65
6.2a	Disabled population and disability prevalence by type of disability and sex, Island of Mauritius, 2000 & 2011 Population Censuses	65

<u>TABLE NO.</u>	<u>DESCRIPTION</u>	
6.2b	Disabled population and disability prevalence by type of disability and sex, Island of Rodrigues, 2000 & 2011 Population Censuses	65

SECTION 7 - SOCIAL BENEFITS

7.1	Population receiving Social Security benefits by sex and type , Republic of Mauritius, 2010 - 2014	66
7.1a	Population receiving Social Security benefits by sex and type , Island of Mauritius, 2010 - 2014	67
7.1b	Population receiving Social Security benefits by sex and type, Island of Rodrigues, 2010 - 2014	68

SECTION 8 - DATA COLLECTED BY THE MGE/CD/FW

8.1	No of reported cases registered at the Family Support Bureau by nature of problem and sex, Island of Mauritius, 2003 - 2007,	69
8.1 (ct'd)	No of reported cases registered at the Family Support Bureau by nature of problem and sex, Island of Mauritius, 2003 - 2007	70
8.1a	Number of Orders issued by type and year, Island of Mauritius, 2002 - 2014	70
8.1b	No of reported cases registered at the Family Support Bureau by nature of problem and sex,Island of Mauritius, 2008 - 2011	71
8.1b (ct'd)	No of reported cases registered at the Family Support Bureau by nature of problem and sex, Island of Mauritius, 2008 - 2011	72
8.1c	Number of cases registered at the Family Support Bureau (FSB), Island of Mauritius, 2013	73
8.1d	Number of cases of Domestic Violence and sex, Island of Mauritius, 2013	73
8.1e	Number of cases (New and Old) and types of Domestic Violence by sex, Island of Mauritius, 2013	73
8.1c (ct'd)	Number of cases registered at the Family Support Bureau (FSB), Island of Mauritius, 2014	74
8.1d (ct'd)	Number of cases of Domestic Violence and sex, Island of Mauritius, 2014	74
8.1e (ct'd)	Number of cases (New and Old) and types of Domestic Violence by sex, Island of Mauritius, 2014	74
8.1f	Number of cases by type of main problems and sex, Island of Mauritius, 2013	75
8.1f (ct'd)	Number of cases by type of main problems and sex, Island of Mauritius, 2014	76
8.1g	Number of cases by type of associated problems and sex, Island of Mauritius, 2013	77
8.1g (ct'd)	Number of cases by type of associated problems and sex, Island of Mauritius, 2014	78
8.2	Number of child cases reported at the Child Development Unit/Family Support Bureau by nature of problem and sex, Island of Mauritius, 2003 - 2007	79
8.2a	Number of child cases reported at the Child Development Unit/Family Support Bureau by nature of problem and sex, Island of Mauritius, 2010 - 2014	80
8.2a (ct'd)	Number of child cases reported at the Child Development Unit/Family Support Bureau by nature of problem and sex, Island of Mauritius, 2010 - 2014	81

<u>TABLE NO.</u>	<u>DESCRIPTION</u>	
8.2a (c'td)	Number of child cases reported at the Child Development Unit/Family Support Bureau by nature of problem and sex, Island of Mauritius, 2010 - 2014	82
8.3	Number of persons following training courses (held by the Home Economics Unit) by course followed and sex, Island of Mauritius, 2009 - 2014	83

SECTION 9 - CHILDREN

9.1	Child population by age group , sex and urban/rural residence, Republic of Mauritius, 2011 Population Census	84
9.1a	Child population by age group , sex and urban/rural residence, Island of Mauritius, 2011 Population Census	84
9.1b	Child population by age group , sex and urban/rural residence, Island of Rodrigues, 2011 Population Census	84
9.2	Estimated child population by age group and sex, Republic of Mauritius, 2013 & 2014	85
9.2a	Estimated child population by age group and sex, Island of Mauritius, 2013 & 2014	85
9.2b	Estimated child population by age group and sex, Island of Rodrigues, 2013 & 2014	85
9.3	Children receiving selected Social Security benefits by age group & sex , Republic of Mauritius, 2010 - 2014	86
9.3a	Children receiving selected Social Security benefits by age group & sex , Island of Mauritius, 2010 - 2014	87
9.3b	Children receiving selected Social Security benefits by age group & sex , Island of Rodrigues, 2010 - 2014	88
9.4	Juvenile offences, Republic of Mauritius, 2009 - 2014	89
9.4a	Juvenile offences, Island of Mauritius, 2009 - 2014	89
9.4b	Juvenile offences, Island of Rodrigues, 2009 - 2014	89
9.5	Juveniles involved in offences by type of offence, Republic of Mauritius, 2009 - 2014	90
9.6	Number of convicted persons below 18 years by type of offence and sex , Republic of Mauritius, 2012 - 2014	91
9.7	Number of persons below 14 years prosecuted by police, by type of offence and sex, Republic of Mauritius, 2012 - 2014	92
9.8	Number of child abuse cases reported to the Police, Island of Mauritius, 2012 - 2014	93
9.9	Number of child victims who have received counselling & assistance in recovery, Island of Mauritius, 2012 - 2014	94
9.10	Number of children with disabilities attending schools, Island of Mauritius, 2011 - 2014	95
9.11	Number of children deprived of family environment and admitted in institutions by age and sex, Island of Mauritius, 2013 - 2014	95
9.12	Number of children placed in foster families, Island of Mauritius, 2012 - 2014	95
9.13	Number of Mauritian children adopted by Foreign Nationals by sex, 2012 - 2014	96
9.13a	Number of Foreign children adopted by Mauritian Nationals by sex, 2012 - 2014	96
9.14	Number of children under 16 years involved in labour, Island of Mauritius, June 11 - May 14	96
9.15	Number of children placed in Probation Hostel by region, Republic of Mauritius, 2013 - 2014	97

<u>TABLE NO.</u>	<u>DESCRIPTION</u>	
9.15a	Number of children placed in Probation Hostel by type of crime/charge, Republic of Mauritius, 2013 - 2014	97
9.15b	Number of children placed in Probation Hostel by age and sex, Republic of Mauritius, 2014	97

<u>TABLE NO.</u>	<u>DESCRIPTION</u>	
9.16	Health care expenditure (Rs Billion), Republic of Mauritius, 2012 - 2014	98
9.17	Expenditure on programmes and services for children with disabilities (Rs Million), Island of Mauritius, 2012 - 2014	98
9.18	Expenditure on support programmes for families (Rs Million), Island of Mauritius, 2012 - 2014	98
9.19	Expenditure on protection of children who are in need of alternative care including the support of care services (Rs Million), Island of Mauritius, 2013 - 2014	99
9.20	Expenditure on programmes & activities for the prevention of and protection from child abuse, child sexual exploitation & child labour (Rs Million), Island of Mauritius, 2013 - 2014	99
9.21	Expenditure on juvenile justice and the recovery and reintegration of juvenile offenders (Rs Million), Island of Mauritius, 2013 - 2014	99

SECTION 10 - MISCELLANEOUS

10.1	Global Gender Index by selected countries, 2013 & 2014	100
------	--	-----

LIST OF CHARTS

<u>FIGURE</u>	<u>DESCRIPTION</u>	<u>PAGE</u>
1	Age-specific fertility rates, Island of Mauritius and Island of Rodrigues, 2000	28
1a	Age-specific fertility rates, Island of Mauritius and Island of Rodrigues, 2011	28
2	Life expectancy at birth by sex, Republic of Mauritius, 1972 - 2011 Population Censuses	29
3	Total number of juveniles involved in offences, Republic of Mauritius, 2009 - 2014	90

INTRODUCTORY NOTES

1. Demographic characteristics

1.1 Population

The resident population of the Republic of Mauritius was estimated at 1,261,721 as at 31st December 2014, of whom 637,387 were females (616,083 in the Island of Mauritius and 21,204 in the Island of Rodrigues). The percentage of women was 50.5% in the Republic of Mauritius in both 2013 and 2014. In 2014, the mean age of women for the Republic of Mauritius was 36.5 years against 34.9 for men.

1.2 Births

Women gave fewer births in 2014 as compared to 2013. The number of births occurring in the Republic of Mauritius in 2014 was 13,415 (6,781 male and 6,634 female) compared to 13,688 (6,940 male and 6,748 female) in 2013 corresponding to a crude birth rate of 10.6 per 1000 mid year population compared to 10.9 in 2013. The total fertility rate which can be calculated as the average number of children born per woman was 1.44 and 1.43 respectively for 2013 and 2014.

1.3 Infant and Maternal Mortality Rate

The infant mortality rate (per 1,000 live-births) increased from 12.1 in 2013 to 14.5 in 2014 while maternal mortality rate (per 1,000 live-births) decreased from 0.66 to 0.52 during the same period.

1.4 Deaths

In the Republic of Mauritius, the registered number of deaths for 2014 was at 9,682 (5,329 male and 4,353 female) compared to 9,440 (5,237 male and 4,203 female) in 2013 giving a crude death rate of 7.7 per 1,000 mid-year population compared to 7.5 in 2013. Lower mortality was observed for women than for men, with crude death rate being 8.5 for men and 6.8 for women.

The major cause of death among men and women in 2014 was diabetes, heart diseases and cerebrovascular diseases. Diabetes accounted for 27.3% of deaths among women and 23.0% among men. Heart diseases and cerebrovascular accounted for 19.2% and 8.6% of death among women and 19.2% and 8.6% of death among men.

Diseases specific to women, such as breast cancer, cervical cancer, cancer of uterus including cervix uteri and 'complications of pregnancy and childbirths', resulted in 5.1% of all deaths among women. On the other hand, 'prostate cancer', which is applicable to men only, was the cause of 1.5% of deaths among men.

1.5 Marriages

In the Republic of Mauritius, the number of registered marriages increased from 9,575 in 2013 to 9,959 in 2014, giving a crude marriage rate, defined as the number of persons getting married per 1,000 mid-year population of 15.8 against 15.2 in 2013. In the Island of Mauritius it increased from 9,393 in 2013 to 9,796 in 2014, giving a crude marriage rate of 16.1, against 15.4 in 2013 and in the Island of Rodrigues it decreased from 182 to 163 for the same period giving a crude marriage rate of 7.8 compared to 8.6 in 2013.

1.6 Divorces

In 2014, divorce rate was on the rise. There were 2,262 divorces registered for the Republic of Mauritius in 2014, showing an increase of 678 as compared to 2013 (1,584). The crude divorce rate increased from 2.5 persons divorced per 1,000 mid-year population in 2013 to 3.6 in 2014.

1.7 Marital status

The 2011 population Census data for the Republic of Mauritius revealed that 58.9% were in a married state or living with a partner, On the other hand, 27.6% is made up of single population. The proportion of widowed and divorced/separated population was at 8.1% and 4.2% respectively.

The proportion of single (never married) persons was higher among males than females. About 33.2% of males were single against 22.3% for females, mainly because women tend to get married at an earlier age than men.

Widowhood was found to be higher among women than among men as a result of a higher life expectancy among women. About 13.9% of women were widowed against 2.2% for men.

The proportion of married was about 60.0% among men and 57.9% among women.

1.8 Life expectancy

There has been a general improvement in life expectancy over the years though improvement was more pronounced among males. This has led to a decrease in the gap in life expectancy at birth between males and females from 7.2 in 2009 to 6.6 in 2014. The life expectancy at birth for 2013 in the Republic of Mauritius was 77.6 years for women compared to 71.0 years for men. Life expectancy among males as well as that among females increased to reach 71.1 years and 77.7 years respectively in 2014.

2. Education

In 2000 and 2011 Population Censuses data revealed that though the overall educational attainment is higher among male population, there are no marked differences between men and women at the different levels. Among those aged 15 years and above, 86.4% of women had attained primary education or higher against 94.7% among men in 2000, whilst in 2011, the corresponding figures were 92% and 97.4% respectively. It is, however, worth noted that nearly 8% of the female population have not been to school or reached only the preprimary level against 3% for the male population. 3.9% of women held a university degree compared to 5.6% for men.

The pre-primary school population in the Republic of Mauritius was 30,142 in 2014 compared to 31,419 in 2013. Boys represented 50.3% of the 2014 pre-primary school population and girls 49.7%. The Gross Enrolment Ratio (pre-primary enrolment as a percentage of the population aged 4 to 5 years) was 98 % for boys, same as for girls.

The primary school population in the Republic of Mauritius was 105,300 in 2014 compared to 108,853 in 2013. Boys represented 50.5% of the 2014 primary school population and girls 49.5%. The Gross Enrolment Ratio (primary enrolment as a percentage of the population aged 6 to 11 years) was 97 % for boys and 98% for girls.

However, at secondary level (academic), the Gross Enrolment Ratio (GER) was higher for girls than for boys. The 2014 Gross Enrolment Ratio was 78% for girls against 69% for boys.

Regarding overall performance in examinations, it was observed that girls were more successful than boys. In 2014, the pass rate among school candidates who took part in the Certificate of Primary Education (CPE) examination was 79.7% for girls as compared to 66.6% for boys. For the School Certificate (SC) examinations, girls recorded a higher pass rate, 76.1% against 70.1%. The pass rate for girls at the Higher School Certificate (HSC) was 79.1% against 70.0% for boys.

3. Economic Characteristics

As in previous years statistics indicate that women are still less economically active than men. In 2014, 45.4% of women aged 16 years and above were actively participating in the economy against 75.2% among men of the same age group. The corresponding percentages for 2013 were 45.3% and 75.1% respectively.

In 2014, nearly 48% of working men were either employed as plant and machine operators or engaged in elementary occupations. About 18% of them were service and sales workers. As regards to working women, nearly 32% were either employed as plant and machine operators or engaged in elementary occupation. About 24% of them were service and sales workers.

Among employed women, 24.4% drew an average salary of up to Rs 4,000 compared to 8.4% among employed male. Only 41.6% of employed women received a salary above Rs 10,000 while the percentage stood at 63.7% for their male counterparts. The mean income was lower for women than for men – Rs 14,800 against Rs 19,900 monthly in 2014.

In 2014, women comprised around 34.3% of the persons employed in the Government services (Central and Local Government). About 66.4% of those employed in various Ministries were technicians, associate professionals and clerks.

4. Persons receiving pensions and with disabilities

Basic Retirement Pension, also known as old-age pension, is payable to every Mauritian citizen aged 60 years and above, subject to certain residency conditions. The number of old-age pensioners, which stood at 177,721 as at end 2013 increased by 3.8% to reach 184,487 as at end 2014. The proportion of old-age female pensioners was 56.1% in 2014.

Basic Widow's Pension is payable to widows aged 16 to 59 years who were civilly and/or religiously married to their late husband. The number of beneficiaries of Widow's pension decreased by 1.0%, from 20,511 as at December 2013 to 20,302 as at December 2014.

The Basic Invalid's Pension is payable to any person aged 15 to 59 years if certified by Medical Board that the person is either permanently or substantially incapacitated to work to a degree of 60% or more for at least 12 months. The number of such beneficiaries decreased from 30,930 as at December 2013 to 30,715 as at December 2014, showing a decrease of 0.7%.

Social Aid is an income-tested scheme. It is payable to the head of a family who is incapable of earning his living adequately and who has insufficient means to support

himself and his dependents. The total number of families benefiting from such assistance increased by 3.3% from 20,570 in December 2013 to 21,246 in December 2014.

Figures on persons with disabilities are obtained from statistics of beneficiaries of invalidity pension. The number of such persons was 47,527 (of whom 21,422 were men and 26,105 were women) as at December 2014.

5. Domestic Violence and Child Abuse

The total number of cases registered at the Family Support Bureau was 4,950 in 2014, among which 2,301 cases were domestic violence.

In 2014, 1,506 (89.6%) new female cases of domestic violence were reported at the Ministry of Gender Equality, Child Development and Family Welfare. One out of every 10 cases of domestic violence was against men.

The main cause behind domestic violence identified in new adult cases reported in 2014 were physical assault by spouse/partner, verbal assault by partner, harassment by spouse and threatening assault by spouse.

The total number of cases of child abuse reported at the Family Support Bureau increased by 3.8% from 5,684 (54.4% for female) in 2013 to 5,903 (55.6% for female) in 2014.

6. Children

6.1 Child population

In 2014, 24.8 % of the population in the Republic of Mauritius was less than 18 years. The corresponding percentages for the Island of Mauritius and Island of Rodrigues for 2014 were 24.5 and 33.4 respectively.

6.2 Juvenile offences

From 2013 to 2014, the juvenile offenders (excluding contraveners) involved in crime and misdemeanors increased by 5.2% from 652 to 686, of whom 215 (31.3%) in assaults, 178 (25.9%) in larceny and 63 (9.2%) in sexual offences. The juvenile delinquency rate (excluding contraventions) rose to 5.8 per 1,000 juvenile population from 5.5 in 2013 for Republic of Mauritius.

In 2014, the juvenile delinquency rate for the Island of Mauritius was 5.9 and that for Rodrigues 3.2.

6.3 Orphans

Basic Orphan's Pension (BOP) is payable to all orphans under the age of 15, or under 20 years, if they are in full-time education. As at December 2014, the number of beneficiaries of BOP in the Republic of Mauritius totaled 372, among whom 181 were females and 191 males.

In 2014, the total number of children benefitting from Child's allowance was 16,311 (8,459 males and 7,852 females).

6.4 Children deprived of family environment

The number of children separated from their families and admitted in institutions increased from 133 in 2013 to 197 in 2014.

Five children were placed in foster families in 2014 as compared to eight in 2013.

7. Training organized by the Home Economics Unit of Ministry of Gender Equality, Child Development and Family Welfare

7.1 Persons following training courses

The number of persons following training courses conducted by the Home Economics Unit of Ministry of Gender Equality, Child Development and Family Welfare was 3,338 in 2014. In 2014, 3,328 women and 10 men attended the courses compared to 3,533 women and 87 men in 2013.

8. Gender Gap Index (GGI)

8.1 Gender Gap Index

The Global Gender Gap Index (GGI) seeks to measure one important aspect of gender equality; their relative gaps between women and men across a large set of countries and across four key areas: economic participation and opportunity, educational attainment, health and survival and political empowerment. The equality benchmark is considered to be one with no gap between men and women.

Mauritius holds the 106th position overall out of 142 countries in 2014, regressing from the 98th position held in 2013.

CONCEPTS & DEFINITIONS

1. Median age : The age which divides the population into two equal-size groups, one of which is younger and the other older than the median.
2. Crude birth rate : The number of live births registered in a year per 1,000 mid-year population.
3. General fertility rate : The number of live births occurring in a year per 1,000 women aged (15 - 49) years at mid-year.
4. Total fertility rate : The average number of children born to an average woman assuming that she survives to the end of her child-bearing age and is subjected to a fixed schedule of age-specific fertility rates.
5. Gross reproduction rate : The average number of daughters born to an average woman assuming that she survives to the end of her child-bearing age and is subjected to a fixed schedule of age-specific fertility rates.
6. Net reproduction rate : The extent to which an average woman will replace herself assuming a fixed schedule of age-specific mortality and fertility rates to prevail through her reproductive span of life.
7. Crude death rate : The number of deaths in a year per 1,000 mid-year population.
8. Infant death : Death of an infant aged under one year.
9. Infant mortality rate : The number of infant deaths in a year per 1,000 live-births during the year.
10. Under 5 mortality rate : The number of deaths of children aged under 5 years in a year per 1,000 live-births during the year.
11. Still birth : A child born after the twenty-eighth week of pregnancy and not breathing or showing any signs of life at any time after being completely expelled from the mother.
12. Maternal mortality rate : The number of deaths due to pregnancy, childbirth and the puerperium per 1,000 live births during that year.
13. Marriage rate : The number of persons married in a year per 1,000 mid-year population.
14. Divorce rate : The number of persons divorced in a year per 1,000 mid-year population.
15. Enrolment rate
 - (i) Pre-Primary : The number of students enrolled per 100 population aged 4 – 5 years.
 - (ii) Primary : The number of students enrolled per 100 population aged 6 – 11 years.
 - (iii) Secondary : The number of students enrolled per 100 population aged 12 – 19 years.
16. Misdemeanours (Less serious offences) : The number of offences that are punishable by (a) imprisonment for a term exceeding 10 days and (b) fine exceeding 5,000 rupees

- 17. Economically active population/Labour : The economically active or Labour Force population is made up of the employed and the unemployed populations.
- 18. Employment : Employed population consists of Mauritians aged 16 years and above (16+) who have worked for pay, profit or family gain for at least one hour during the reference week of a month. It includes those who are temporarily absent from work for reasons such as leave with pay, leave without pay and temporary disorganisation of work (bad weather, break down of equipment, lack of order, etc.)
- 19. Unemployment : Unemployed population comprises all Mauritians aged 16+ who are not working but who are looking for work and are available for work during the reference period.
- 20. Unemployment rate : Unemployment rate is the ratio (%) of unemployment to labour force
- 21. Inactive population : The inactive population is neither employed nor unemployed and consists of all Mauritians aged 16+, not forming part of the Labour force for reasons such as attendance at educational institutions, engagement in household duties, retirement, old age and infirmity/disablement.
- 22. Government Services : Total Government services include both Central and Local governments but exclude Extra Budgetary Units (EBUs)

SOURCE OF DATA

All data published have been obtained from Statistics Mauritius (formerly Central Statistics Office) except where otherwise stated.

SYMBOLS & ABBREVIATIONS USED

-	Nil
- . -	Not applicable
NA or ...	Not available
Ns	Not stated
No.	Number
BS	Both Sexes
000	Thousand
%	Percentage
TFR	Total Fertility Rate
CMPHS	Continuous Multi Purpose Household Survey
CDU	Child Development Unit
DVIU	Domestic Violence Intervention Unit
FCS	Family Counselling Service
FSB	Family Support Bureau
MGECDWF	Ministry of Gender Equality, Child Development and Family Welfare
UOM	University of Mauritius
MIE	Mauritius Institute of Education
MGI	Mahatma Gandhi Institute

Table 1.1 - Basic facts - Republic of Mauritius, 2009 - 2014

	2009	2010	2011	2012	2013	2014
1. Population (as at 31st December)	1,249,189	1,251,676	1,254,139	1,257,490	1,259,838	1,261,447
2. Population density (per km2)	612	614	615	616	618	618
3. Population under 18 years (mid year)	343,950	337,748	330,960	325,127	318,885	313,059
4. Population growth rate (%)	0.3	0.2	0.2	0.3	0.2	0.1
5. Total fertility rate	1.59	1.57	1.55	1.54	1.44	1.43
6. Adolescent fertility rate	33.9	31.9	31.3	30.4	27.2	24.9
7. Crude birth rate*	12.3	12.0	11.7	11.5	10.9	10.6
8. Crude marriage rate*	17.0	16.9	16.8	16.5	15.2	15.8
9. Divorce rate*	3.5	2.9	2.9	3.2	2.5	3.6
10. Crude death rate*	7.4	7.3	7.3	7.4	7.5	7.7
11. Infant mortality rate#	13.4	12.5	12.9	13.7	12.1	14.5
12. Under 5 mortality rate#	16.1	14.7	15.9	15.7	14.5	16.0
13. Still birth rate#	8.9	6.8	9.4	9.6	8.5	10.2
14. Maternal mortality rate #	0.65	0.33	0.34	0.62	0.66	0.52
15. Life expectancy at birth (yrs):						
Male	69.8	70.1	70.4	70.7	71.0	71.1**
Female	77.0	77.4	77.5	77.7	77.6	77.7**
16. Labour force ('000)	540.2	551.9	548.6	556.3	571.2	575.7
17. Employed population ('000)	500.9	509.7	505.9	511.7	525.7	530.9
18. Unemployed population ('000)	39.3	42.2	42.7	44.6	45.5	44.8
19. Unemployed rate (%)	7.3	7.6	7.8	8.0	8.0	7.8
20. Activity rate (%)	58.5	59.2	58.5	58.8	59.9	59.9
21. Per capita GDP (Rs)						
(at market prices)	220,354	233,507	257,556	273,412 ^r	290,668 ^f	306,103
22. Inflation rate (%)	2.5	2.9	6.5	3.9	3.5	3.2
23. Total exports (Rs Million)	61,681	69,550	73,586	79,658 ^r	88,048 ^f	91,191**
24. Total imports (Rs Million)	118,444	134,882	147,815	160,996 ^r	165,594 ^f	172,023**

* per 1000 mid- year population
per 1000 live-births

** Provisional
r:Revised



POPULATION

Table 2.1 - Mid-year resident population by age and sex, Republic of Mauritius, 2008 - 2014

	2008			2009			2010			2011			2012			2013			2014		
	Male	Female	Both sexes	Male	Female	Both sexes	Male	Female	Both sexes	Male	Female	Both sexes	Male	Female	Both sexes	Male	Female	Both sexes	Male	Female	Both sexes
Resident population ('000)	616.1	628.0	1,244.1	617.4	630.0	1,247.4	618.8	631.6	1,250.4	619.6	632.8	1,252.4	621.3	634.6	1,255.9	622.9	635.8	1,258.7	624.0	636.9	1,260.9
<i>% of whom:</i>																					
<i>under 15 yrs</i>	23.8	22.6	23.2	23.3	22.1	22.7	22.7	21.6	22.2	22.2	21.1	21.7	21.7	20.6	21.2	21.2	20.1	20.7	20.7	19.7	20.2
<i>(15 - 59) yrs</i>	66.8	65.2	65.9	66.9	65.2	66.1	66.9	65.2	66.0	66.8	64.9	65.8	66.7	64.9	65.8	66.7	64.8	65.7	66.7	64.6	65.6
<i>(60 - 64) yrs</i>	3.4	3.9	3.7	3.6	4.1	3.8	3.9	4.3	4.1	4.4	4.8	4.6	4.7	5.0	4.8	4.9	5.3	5.1	5.1	5.5	5.3
<i>65 yrs & over</i>	6.0	8.3	7.2	6.2	8.6	7.4	6.5	8.9	7.7	6.6	9.2	7.9	6.9	9.5	8.2	7.2	9.8	8.5	7.5	10.2	8.9
Mean age (yrs)	32.6	34.1	33.4	33.0	34.5	33.8	33.4	34.9	34.2	33.8	35.4	34.6	34.2	35.7	35.0	34.5	36.1	35.3	34.9	36.5	35.7
Median age (yrs)	31.2	32.5	31.8	31.7	33.0	32.3	32.3	33.5	32.9	32.8	34.0	33.4	33.1	34.4	33.8	33.5	34.9	34.2	34.0	35.4	34.7

Table 2.1a - Mid-year resident population by age and sex, Island of Mauritius, 2008 - 2014

	2008			2009			2010			2011			2012			2013			2014		
	Male	Female	Both sexes	Male	Female	Both sexes	Male	Female	Both sexes	Male	Female	Both sexes	Male	Female	Both sexes	Male	Female	Both sexes	Male	Female	Both sexes
Resident population ('000)	596.8	608.2	1,205.0	597.9	609.9	1,207.8	599.1	611.3	1,210.4	599.7	612.3	1,212.0	601.2	613.8	1,215.0	602.5	614.8	1,217.3	603.5	615.8	1,219.3
<i>% of whom:</i>																					
<i>under 15 yrs</i>	23.6	22.4	23.0	23.0	21.9	22.5	22.5	21.4	21.9	22.0	20.9	21.4	21.5	20.4	20.9	21.0	19.9	20.4	20.4	19.4	19.9
<i>(15 - 59) yrs</i>	67.0	65.4	66.1	67.2	65.4	66.2	67.1	65.3	66.3	67.0	65.1	66.1	66.9	65.0	66.0	66.8	64.8	65.8	66.8	64.7	65.8
<i>(60 - 64) yrs</i>	3.4	3.9	3.7	3.6	4.1	3.9	3.9	4.3	4.1	4.4	4.8	4.6	4.7	5.1	4.9	5.0	5.4	5.2	5.2	5.6	5.4
<i>65 yrs & over</i>	6.0	8.3	7.2	6.2	8.6	7.4	6.5	9.0	7.7	6.6	9.2	7.9	6.9	9.5	8.2	7.2	9.9	8.6	7.6	10.3	8.9
Mean age (yrs)	32.7	34.2	33.5	33.1	34.6	33.9	33.5	35.1	34.3	34.0	35.5	34.7	34.3	35.9	35.1	34.7	36.3	35.5	35.1	36.7	35.9
Median age (yrs)	31.4	32.6	32.0	31.9	33.2	32.5	32.4	33.7	33.1	32.9	34.2	33.6	33.3	34.6	34.0	33.7	35.1	34.4	34.2	35.6	34.9

Table 2.1b - Mid-year resident population by age and sex, Island of Rodrigues, 2008 - 2014

	2008			2009			2010			2011			2012			2013			2014		
	Male	Female	Both sexes	Male	Female	Both sexes	Male	Female	Both sexes	Male	Female	Both sexes	Male	Female	Both sexes	Male	Female	Both sexes	Male	Female	Both sexes
Resident population ('000)	19.3	19.9	39.2	19.5	20.1	39.6	19.7	20.3	40.0	19.9	20.5	40.4	20.1	20.8	40.9	20.4	20.9	41.3	20.5	21.1	41.6
<i>% of whom:</i>																					
<i>under 15 yrs</i>	30.3	29.1	29.7	30.2	28.9	29.5	30.1	28.7	29.4	29.9	28.5	29.2	29.6	28.3	28.9	29.2	27.9	28.6	29.0	27.4	28.2
<i>(15 - 59) yrs</i>	60.5	60.3	60.5	60.5	60.4	60.5	60.3	60.4	60.4	60.4	60.4	60.4	60.6	60.3	60.5	60.8	60.7	60.7	60.8	60.8	60.8
<i>(60 - 64) yrs</i>	3.0	2.9	2.9	3.0	2.8	2.9	3.1	2.8	2.9	3.1	2.8	2.9	3.1	3.0	3.1	3.2	3.0	3.1	3.3	3.2	3.3
<i>65 yrs & over</i>	6.2	7.7	6.9	6.3	7.9	7.1	6.5	8.1	7.3	6.6	8.3	7.5	6.7	8.4	7.5	6.8	8.4	7.6	6.9	8.6	7.7
Mean age (yrs)	29.4	30.2	29.8	29.7	30.5	30.1	29.9	30.8	30.3	30.2	31.0	30.6	30.4	31.2	30.8	30.6	31.5	31.1	30.9	31.9	31.4
Median age (yrs)	26.4	27.0	26.7	26.9	27.5	27.2	27.3	27.9	27.6	27.8	28.3	28.1	28.1	28.8	28.5	28.4	29.1	28.8	28.7	29.6	29.2

Table 2.2 - Mid-year resident population by geographical district, Republic of Mauritius, 2008 - 2014

	2008			2009			2010			2011			2012			2013			2014		
	Male	Female	Both sexes	Male	Female	Both sexes	Male	Female	Both sexes	Male	Female	Both sexes	Male	Female	Both sexes	Male	Female	Both sexes	Male	Female	Both sexes
Total resident population ('000)	616.1	628.0	1,244.1	617.4	630.0	1,247.4	618.8	631.6	1,250.4	619.6	632.8	1,252.4	621.3	634.6	1,255.9	622.9	635.8	1,258.7	624.0	636.9	1,260.9
<i>of whom in :</i>																					
Port Louis	61.8	62.6	124.4	61.3	62.1	123.4	60.8	61.6	122.4	60.2	61.1	121.3	60.1	60.9	121.0	60.0	60.8	120.8	59.8	60.6	120.4
Pamplemousses	66.7	67.6	134.3	67.2	68.1	135.3	67.7	68.5	136.2	68.1	68.9	137.0	68.4	69.4	137.8	68.8	69.8	138.6	69.1	70.1	139.2
Riviere du Rempart	52.6	53.4	106.0	52.8	53.6	106.4	53.0	53.9	106.9	53.2	54.1	107.3	53.3	54.2	107.5	53.4	54.3	107.7	53.5	54.4	107.9
Flacq	67.6	67.9	135.5	67.8	68.3	136.1	68.0	68.5	136.5	68.2	68.8	137.0	68.4	69.1	137.5	68.6	69.3	137.9	68.8	69.5	138.3
Grand Port	55.7	56.2	111.9	55.8	56.4	112.2	55.8	56.4	112.2	55.9	56.5	112.4	56.0	56.6	112.6	56.2	56.6	112.8	56.2	56.7	112.9
Savanne	34.0	34.7	68.7	34.0	34.7	68.7	34.0	34.7	68.7	34.0	34.7	68.7	34.0	34.7	68.7	34.1	34.7	68.8	34.1	34.6	68.7
Plaines Wilhems	181.2	188.5	369.7	181.1	188.7	369.8	181.0	188.7	369.7	180.7	188.6	369.3	180.7	188.6	369.3	180.7	188.5	369.2	180.7	188.4	369.1
Moka	40.3	40.9	81.2	40.5	41.1	81.6	40.7	41.3	82.0	40.9	41.4	82.3	41.1	41.6	82.7	41.2	41.7	82.9	41.3	41.8	83.1
Black River	36.7	36.3	73.0	37.4	37.0	74.4	38.0	37.6	75.6	38.6	38.2	76.8	39.1	38.8	77.9	39.5	39.3	78.8	40.0	39.7	79.7
Island of Rodrigues	19.3	19.9	39.2	19.5	20.1	39.6	19.7	20.3	40.0	19.9	20.5	40.4	20.1	20.8	40.9	20.4	20.9	41.3	20.5	21.1	41.6

Table 2.2a - Percentage distribution of mid-year resident population by geographical district, Republic of Mauritius, 2008 - 2014

	2008			2009			2010			2011			2012			2013			2014		
	Male	Female	Both sexes	Male	Female	Both sexes	Male	Female	Both sexes	Male	Female	Both sexes	Male	Female	Both sexes	Male	Female	Both sexes	Male	Female	Both sexes
Total resident population ('000)	616.1	628.0	1,244.1	617.4	630.0	1,247.4	618.8	631.6	1,250.4	619.6	632.8	1,252.4	621.3	634.6	1,255.9	622.9	635.8	1,258.7	624.0	636.9	1,260.9
% of whom in :																					
Port Louis	10.0	10.0	10.0	9.9	9.9	9.9	9.8	9.8	9.8	9.7	9.7	9.7	9.7	9.6	9.6	9.6	9.6	9.6	9.6	9.5	9.5
Pamplemousses	10.8	10.8	10.8	10.9	10.8	10.8	10.9	10.8	10.9	11.0	10.9	10.9	11.0	10.9	11.0	11.0	11.0	11.0	11.1	11.0	11.0
Riviere du Rempart	8.5	8.5	8.5	8.6	8.5	8.5	8.6	8.5	8.5	8.6	8.5	8.6	8.6	8.5	8.6	8.6	8.5	8.6	8.6	8.5	8.6
Flacq	11.0	10.8	10.9	11.0	10.8	10.9	11.0	10.9	10.9	11.0	10.9	10.9	11.0	10.9	10.9	11.0	10.9	11.0	11.0	10.9	11.0
Grand Port	9.0	9.0	9.0	9.0	8.9	9.0	9.0	8.9	9.0	9.0	8.9	9.0	9.0	8.9	9.0	9.0	8.9	9.0	9.0	8.9	9.0
Savanne	5.5	5.5	5.5	5.5	5.5	5.5	5.5	5.5	5.5	5.5	5.5	5.5	5.5	5.5	5.5	5.5	5.5	5.5	5.4	5.5	5.4
Plaines Wilhems	29.4	30.0	29.7	29.3	29.9	29.6	29.2	29.9	29.6	29.2	29.8	29.5	29.1	29.7	29.4	29.0	29.6	29.3	29.0	29.6	29.3
Moka	6.5	6.5	6.5	6.6	6.5	6.5	6.6	6.5	6.6	6.6	6.5	6.6	6.6	6.5	6.6	6.6	6.6	6.6	6.6	6.6	6.6
Black River	6.0	5.8	5.9	6.1	5.9	6.0	6.1	6.0	6.0	6.2	6.0	6.1	6.3	6.1	6.2	6.3	6.2	6.3	6.4	6.2	6.3
Island of Rodrigues	3.1	3.2	3.1	3.2	3.2	3.2	3.2	3.2	3.2	3.2	3.2	3.2	3.2	3.3	3.3	3.3	3.3	3.3	3.3	3.3	3.3

**Table 2.3 - Number and % distribution of resident population (15+ yrs) by marital status and sex, Republic of Mauritius, 1990, 2000 & 2011
Population Censuses**

Marital status	1990					2000					2011				
	Male		Female		Both sexes	Male		Female		Both sexes	Male		Female		Both sexes
	Number	%	Number	%	Number	Number	%	Number	%	Number	Number	%	Number	%	Number
Single	145,054	39.3	97,557	26.1	242,611	153,921	35.5	103,810	23.2	257,731	159,829	33.2	111,315	22.3	271,144
Married/in a union	211,353	57.2	215,206	57.6	426,559	262,263	60.5	266,820	59.6	529,083	289,300	60.0	289,026	57.9	578,326
Widowed	6,523	1.8	46,770	12.5	53,293	7,765	1.8	58,339	13.0	66,104	10,583	2.2	69,392	13.9	79,975
Divorced/separated	5,681	1.5	13,380	3.6	19,061	8,821	2.0	16,987	3.8	25,808	17,286	3.6	23,740	4.8	41,026
Other/not stated	657	0.2	1,005	0.3	1,662	881	0.2	2,009	0.4	2,890	4,899	1.0	5,715	1.1	10,614
Total	369,268	100.0	373,918	100.0	743,186	433,651	100.0	447,965	100.0	881,616	481,897	100.0	499,188	100.0	981,085

**Table 2.3a - Number and % distribution of resident population (15+ yrs) by marital status and sex, Island of Mauritius, 1990, 2000 & 2011
Population Censuses**

Marital status	1990					2000					2011				
	Male		Female		Both sexes	Male		Female		Both sexes	Male		Female		Both sexes
	Number	%	Number	%	Number	Number	%	Number	%	Number	Number	%	Number	%	Number
Single	141,095	39.3	94,876	26.1	235,971	149,220	35.4	100,510	23.1	249,730	155,173	33.2	108,423	22.4	263,596
Married/in a union	205,527	57.2	209,314	57.6	414,841	255,351	60.6	259,885	59.7	515,236	281,234	60.1	280,976	58.0	562,210
Widowed	6,379	1.8	45,976	12.6	52,355	7,566	1.8	57,273	13.2	64,839	10,223	2.2	67,911	14.0	78,134
Divorced/separated	5,470	1.5	12,991	3.6	18,461	8,535	2.0	16,505	3.8	25,040	16,539	3.5	22,652	4.7	39,191
Other/not stated	655	0.2	549	0.2	1,204	857	0.2	1,284	0.3	2,141	4,773	1.0	4,545	0.9	9,318
Total	359,126	100.0	363,706	100.0	722,832	421,529	100.0	435,457	100.0	856,986	467,942	100.0	484,507	100.0	952,449

Table 2.3b - Number and % distribution of resident population (15+ yrs) by marital status and sex, Island of Rodrigues, 1990, 2000, & 2011
Population Censuses

Marital status	1990					2000					2011				
	Male		Female		Both sexes	Male		Female		Both sexes	Male		Female		Both sexes
	Number	%	Number	%	Number	Number	%	Number	%	Number	Number	%	Number	%	Number
Single	3,959	39.0	2,681	26.3	6,640	4,701	38.8	3,300	26.4	8,001	4,656	33.4	2,892	19.7	7,548
Married/in a union	5,826	57.4	5,892	57.7	11,718	6,912	57.0	6,935	55.4	13,847	8,066	57.8	8,051	54.8	16,117
Widowed	144	1.4	794	7.8	938	199	1.6	1,066	8.5	1,265	360	2.6	1,481	10.1	1,841
Divorced/separated	211	2.1	389	3.8	600	286	2.4	482	3.9	768	747	5.4	1,088	7.4	1,835
Other/not stated	2	0.0	456	4.5	458	24	0.2	725	5.8	749	126	0.9	1,170	8.0	1,296
Total	10,142	100.0	10,212	100.0	20,354	12,122	100.0	12,508	100.0	24,630	13,955	100.0	14,682	100.0	28,637

Table 2.4 - Vital statistics, Republic of Mauritius, 2008 - 2014

	2008	2009	2010	2011	2012	2013	2014
Still births	165	138	103	139	140	117	138
Live births	16,094	15,259	14,831	14,626	14,502	13,488	13,346
<i>of which to women</i>							
<i>(Under 15) yrs</i>	38	38	23	25	18	30	29
<i>(15 - 19) yrs</i>	1,765	1,709	1,614	1,549	1,504	1,303	1,170
<i>(20 - 44) yrs</i>	14,278	13,486	13,178	13,024	12,955	12,131	12,129
<i>(45 - 49) yrs</i>	16	26	16	28	25	24	18
Share of low birth weight (among known birthweight)	14.9	16.4	17.1	17.0	17.0	16.7	16.9
Marriages	11,197	10,619	10,555	10,499	10,382	9,575	9,959
Divorces	1,569	2,154	1,837	1,788	2,003	1,584	2,262
of which petitioned by women	1,093	1,326	1,163	1,063	1,040	763	1,118

Table 2.4a - Vital statistics, Island of Mauritius, 2008 - 2014

	2008	2009	2010	2011	2012	2013	2014
Still births	159	133	95	136	132	114	130
Live births	15,327	14,556	14,128	13,914	13,785	12,789	12,658
<i>of which to women</i>							
<i>(Under 15) yrs</i>	33	34	21	23	14	28	27
<i>(15 - 19) yrs</i>	1,652	1,592	1,498	1,450	1,396	1,182	1,073
<i>(20 - 44) yrs</i>	13,626	12,906	12,593	12,417	12,352	11,559	11,542
<i>(45 - 49) yrs</i>	16	24	16	24	23	20	16
Share of low birth weight (among known birthweight)	15.0	16.7	17.4	17.1	17.2	17.0	17.3
Marriages	11,012	10,446	10,370	10,334	10,197	9,393	9,796

Table 2.4b - Vital statistics, Island of Rodrigues, 2008 - 2014

	2008	2009	2010	2011	2012	2013	2014
Still births	6	5	8	3	8	3	8
Live births	767	703	703	712	717	699	688
<i>of which to women</i>							
<i>(Under 15) yrs</i>	5	4	2	2	4	2	2
<i>(15 - 19) yrs</i>	113	117	119	100	109	121	97
<i>(20 - 44) yrs</i>	649	580	582	606	602	572	587
<i>(45 - 49) yrs</i>	-	2	-	4	2	4	2
Share of low birth weight (among known birthweight)	12.7	10.0	10.3	15.5	11.5	9.5	11.0
Marriages	185	173	185	165	185	182	163

Table 2.5 - Number of widowed by sex, Republic of Mauritius, 1990, 2000 & 2011 Population Censuses

Age group (years)	1990					2000					2011				
	Number of widowed				Total population	Number of widowed				Total population	Number of widowed				Total population
	Male		Female			Male		Female			Male		Female		
	No.	%	No.	%		No.	%	No.	%		No.	%	No.	%	
15 - 19	4	0.1	9	0.0	97,202	1	0.0	8	0.0	102,088	3	0.0	6	0.0	101,008
20 - 24	9	0.1	90	0.2	102,664	12	0.2	98	0.2	110,892	4	0.0	55	0.1	92,671
25 - 29	47	0.7	308	0.7	105,582	31	0.4	273	0.5	93,797	47	0.4	149	0.2	90,937
30 - 34	75	1.1	733	1.6	93,589	64	0.8	684	1.2	99,515	104	1.0	467	0.7	103,429
35 - 39	111	1.7	1,464	3.1	81,209	120	1.5	1,449	2.5	101,946	147	1.4	904	1.3	87,797
40 - 44	123	1.9	2,559	5.5	60,435	168	2.2	2,598	4.5	90,406	277	2.6	1,916	2.8	89,386
45 - 49	183	2.8	3,202	6.8	44,710	304	3.9	4,408	7.6	77,931	476	4.5	3,818	5.5	99,341
50 - 54	345	5.3	4,328	9.3	38,038	332	4.3	5,847	10.0	56,939	680	6.4	5,857	8.4	86,337
55 - 59	543	8.3	5,114	10.9	32,163	476	6.1	6,354	10.9	40,491	933	8.8	8,256	11.9	73,054
60 & over	5,082	77.9	28,950	61.9	87,522	6,251	80.6	36,590	62.8	107,492	7,894	74.7	47,917	69.1	156,506
15 & over	6,522	100.0	46,757	100.0	743,114	7,759	100.0	58,309	100.0	881,497	10,565	100.0	69,345	100.0	980,466

Table 2.5a - Number of widowed by sex, Island of Mauritius, 1990, 2000 & 2011 Population Censuses

Age group (years)	1990					2000					2011				
	Number of widowed				Total population	Number of widowed				Total population	Number of widowed				Total population
	Male		Female			Male		Female			Male		Female		
	No.	%	No.	%		No.	%	No.	%		No.	%	No.	%	
15 - 19	4	0.1	9	0.0	93,213	1	0.0	8	0.0	97,573	3	0.0	5	0.0	97,437
20 - 24	9	0.1	90	0.2	99,478	12	0.2	95	0.2	107,318	4	0.0	54	0.1	87,719
25 - 29	47	0.7	299	0.7	103,027	30	0.4	265	0.5	91,046	46	0.5	140	0.2	87,746
30 - 34	74	1.2	718	1.6	91,403	64	0.8	668	1.2	97,046	101	1.0	449	0.7	100,036
35 - 39	109	1.7	1,442	3.1	79,579	116	1.5	1,419	2.5	99,654	144	1.4	880	1.3	85,037
40 - 44	122	1.9	2,540	5.5	59,146	164	2.2	2,553	4.5	88,307	266	2.6	1,873	2.8	86,885
45 - 49	177	2.8	3,137	6.8	43,321	295	3.9	4,340	7.6	76,409	465	4.6	3,754	5.5	97,019
50 - 54	332	5.2	4,272	9.3	36,866	322	4.3	5,787	10.1	55,724	665	6.5	5,750	8.5	84,186
55 - 59	529	8.3	5,033	11.0	31,235	460	6.1	6,252	10.9	39,270	910	8.9	8,122	12.0	71,491
60 & over	4,975	78.0	28,423	61.8	85,495	6,096	80.6	35,857	62.6	104,525	7,606	74.5	46,839	69.0	152,300
15 & over	6,378	100.0	45,963	100.0	722,763	7,560	100.0	57,244	100.0	856,872	10,210	100.0	67,866	100.0	949,856

Table 2.5b - Number of widowed by sex, Island of Rodrigues, 1990, 2000 & 2011 Population Censuses

Age group (years)	1990					2000					2011				
	Number of widowed				Total population	Number of widowed				Total population	Number of widowed				Total population
	Male		Female			Male		Female			Male		Female		
	No.	%	No.	%		No.	%	No.	%		No.	%	No.	%	
15 - 19	-	-	-	-	3,989	-	-	-	-	4,515	-	-	1	0.1	3,571
20 - 24	-	-	-	-	3,186	-	-	3	0.3	3,574	-	-	1	0.1	2,952
25 - 29	-	-	9	1.1	2,555	1	0.5	8	0.8	2,751	1	0.3	9	0.6	3,191
30 - 34	1	0.7	15	1.9	2,186	-	-	16	1.5	2,469	3	0.8	18	1.2	3,393
35 - 39	2	1.4	22	2.8	1,630	4	2.0	30	2.8	2,292	3	0.8	24	1.6	2,760
40 - 44	1	0.7	19	2.4	1,289	4	2.0	45	4.2	2,099	11	3.1	43	2.9	2,501
45 - 49	6	4.2	65	8.2	1,389	9	4.5	68	6.4	1,522	11	3.1	64	4.3	2,322
50 - 54	13	9.0	56	7.1	1,172	10	5.0	60	5.6	1,215	15	4.2	107	7.2	2,151
55 - 59	14	9.7	81	10.2	928	16	8.0	102	9.6	1,221	23	6.5	134	9.1	1,563
60 & over	107	74.3	527	66.4	2,027	155	77.9	733	68.8	2,967	288	81.1	1,078	72.9	4,206
15 & over	144	100.0	794	100.0	20,351	199	100.0	1,065	100.0	24,625	355	100.0	1,479	100.0	28,610

Table 2.6 - Selected rates, Republic of Mauritius, 2008 - 2014

	2008	2009	2010	2011	2012	2013	2014
Crude birth rate	13.2	12.3	12.0	11.7	11.5	10.9	10.6
General fertility rate	48.2	45.8	44.7	44.3	44.1	41.3	41.1
Total fertility rate	1.67	1.59	1.57	1.55	1.54	1.44	1.43
Gross reproduction rate	0.83	0.79	0.78	0.77	0.75	0.71	0.71
Net reproduction rate	0.81	0.77	0.76	0.75	0.74	0.69	0.69

Table 2.6a - Selected rates, Island of Mauritius, 2008 - 2014

	2008	2009	2010	2011	2012	2013	2014
Crude birth rate	12.9	12.11	11.8	11.6	11.3	10.7	10.4
General fertility rate	47.4	45.1	44.0	43.5	43.4	40.5	40.3
Total fertility rate	1.64	1.57	1.54	1.53	1.52	1.41	1.41
Gross reproduction rate	0.81	0.78	0.77	0.76	0.74	0.70	0.69
Net reproduction rate	0.79	0.76	0.75	0.74	0.73	0.68	0.67

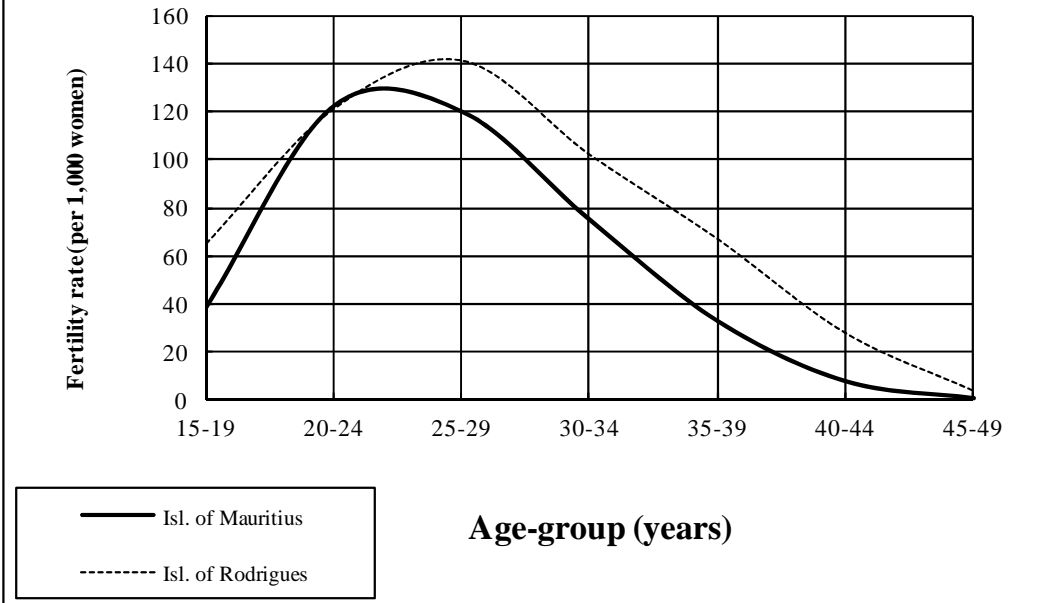
Table 2.6b - Selected rates ^{1/}, Island of Rodrigues, 2008 - 2014

	2008	2009	2010	2011	2012	2013	2014 ²
Crude birth rate	20.0	18.7	17.8	17.7	17.4	17.1	16.5
General fertility rate	74.8	69.6	67.3	67.2	66.6	65.4	63.7
Total fertility rate	2.44	2.27	2.21	2.22	2.21	2.18	2.14
Gross reproduction rate	1.18	1.08	1.06	1.10	1.08	1.08	1.09
Net reproduction rate	1.14	1.05	1.02	1.06	1.05	1.04	1.05

1/ because of the small number of events, the rates have been calculated by taking an average of events for three years in order to remove out wide fluctuations in the yearly data

2/ for the year 2014 only

**Figure 1 - Age-specific fertility rates
Island of Mauritius & Island of Rodrigues, year 2000**



**Figure 1a - Age-specific fertility rates
Island of Mauritius & Island of Rodrigues, year 2011**

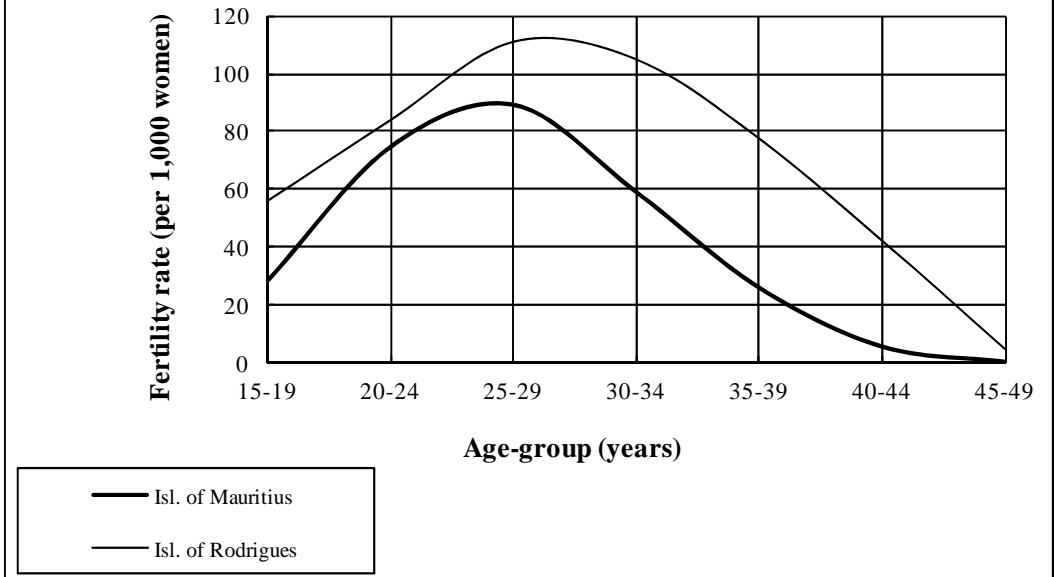


Table 2.7 - Life expectancy (years) at selected ages & sex, Republic of Mauritius, 2009 - 2013

Age-group (years)	2009		2010		2011		2012		2013	
	Male	Female	Male	Female	Male	Female	Male	Female	Male	Female
0	69.8	77.0	70.1	77.4	70.4	77.5	70.7	77.7	71.0	77.6
1	69.7	76.8	69.9	77.2	70.4	77.4	70.6	77.5	70.9	77.5
5	65.9	73.0	66.1	73.4	66.6	73.5	66.8	73.7	67.1	73.6
10	61.0	68.0	61.2	68.4	61.6	68.6	61.8	68.8	62.1	68.7
20	51.3	58.2	51.5	58.6	51.9	58.7	52.1	58.9	52.4	58.8
30	41.9	48.5	42.2	48.9	42.6	49.1	42.8	49.2	43.1	49.2
40	32.9	39.0	33.2	39.4	33.7	39.5	33.9	39.7	34.2	39.6
50	24.6	29.9	25.0	30.3	25.4	30.5	25.7	30.6	25.7	30.5
60	17.4	21.5	17.7	21.9	18.0	22.0	18.1	22.1	18.2	22.0

Figure 2 : Life expectancy at birth by sex, at each census, Republic of Mauritius

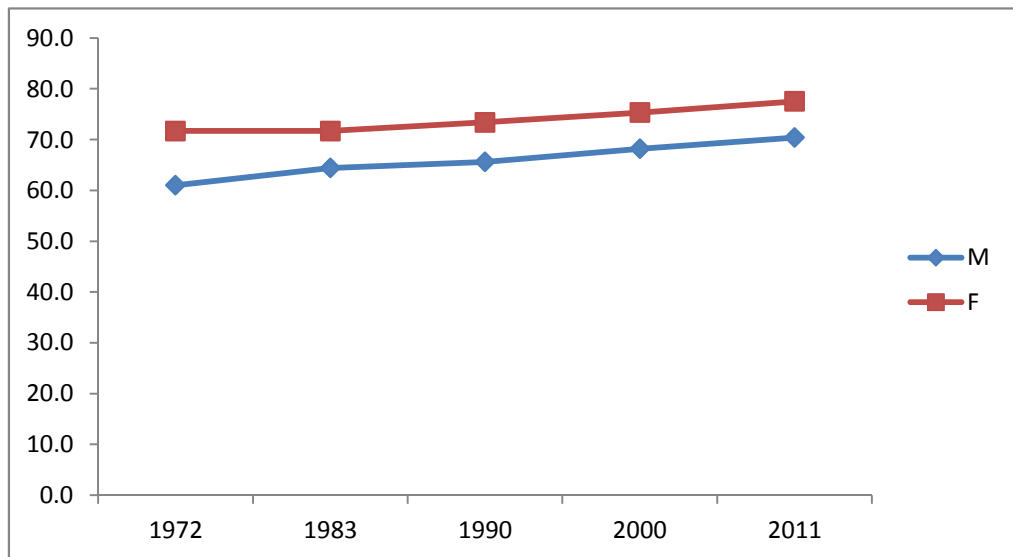


Table 2.8 - Sex ratio of the population of the Republic of Mauritius, Island of Mauritius and Island of Rodrigues, 1983, 1990, 2000 & 2011 Population Censuses

	1983	1990	2000	2011
Republic of Mauritius	99.2	99.9	98.1	97.1
Island of Mauritius	99.1	99.8	98.1	97.1
Island of Rodrigues	100.1	99.8	97.9	97.8



HEALTH

Table 3.1 - Number of deaths and death rates, Republic of Mauritius, 2009 - 2014

	2009			2010			2011			2012			2013			2014		
	Male	Female	Both Sexes	Male	Female	Both Sexes	Male	Female	Both Sexes	Male	Female	Both Sexes	Male	Female	Both Sexes	Male	Female	Both Sexes
Number of deaths	5,226	3,998	9,224	5,076	4,055	9,131	5,236	3,934	9,170	5,123	4,220	9,343	5,237	4,203	9,440	5,329	4,353	9,682
<i>of which:</i>																		
<i>Under 1 yr</i>	<i>124</i>	<i>91</i>	215	<i>106</i>	<i>81</i>	187	<i>102</i>	<i>87</i>	189	<i>118</i>	<i>91</i>	199	<i>93</i>	<i>72</i>	165	<i>96</i>	<i>98</i>	194
<i>Under 5 yrs</i>	<i>129</i>	<i>108</i>	237	<i>125</i>	<i>96</i>	221	<i>122</i>	<i>112</i>	234	<i>132</i>	<i>96</i>	228	<i>110</i>	<i>88</i>	198	<i>107</i>	<i>107</i>	214
<i>60 years and above</i>	2,968	2,968	5,936	2,926	2,983	5,909	3,083	2,939	6,022	3,073	3,193	6,266	3,273	3,236	6,509	3,334	3,235	6,569
Crude death rate (per 1,000 population)	8.5	6.3	7.4	8.2	6.4	7.3	8.5	6.2	7.3	8.2	6.7	7.4	8.4	6.6	7.5	8.5	6.8	7.7
Infant mortality rate (per 1,000 live births)	16.0	12.0	13.4	14.0	10.9	12.5	13.7	12.0	12.9	15.9	11.4	13.7	13.4	10.7	12.1	14.2	14.8	14.5
Under 5 mortality rate (per 1,000 live births)	16.6	14.2	15.4	16.5	12.9	14.7	16.4	15.4	15.9	17.8	13.6	15.7	15.9	13.0	14.5	15.8	16.1	16.0
Maternal mortality rate (per 1,000 live births)	-. -	0.65	0.65	-. -	0.33	0.33	-. -	0.34	0.34	-. -	0.62	-. -	-. -	0.66	-. -	-. -	0.52	-. -

-. -: Not applicable

Source: Ministry of Health & Quality of Life

Table 3.1a - Number of deaths and death rates, Island of Mauritius, 2009 - 2014

	2009			2010			2011			2012			2013			2014		
	Male	Female	Both Sexes	Male	Female	Both Sexes	Male	Female	Both Sexes	Male	Female	Both Sexes	Male	Female	Both Sexes	Male	Female	Both Sexes
Number of deaths	5,094	3,893	8,987	4,944	3,947	8,891	5,119	3,832	8,951	4,995	4,108	9,103	5,124	4,107	9,231	5,200	4,238	9,438
<i>of which:</i>																		
<i>Under 1 yr</i>	<i>108</i>	<i>87</i>	195	<i>97</i>	<i>80</i>	177	<i>96</i>	<i>81</i>	177	109	73	184	90	69	159	91	88	179
<i>Under 5 yrs</i>	<i>129</i>	<i>108</i>	237	<i>114</i>	<i>95</i>	209	<i>116</i>	<i>103</i>	219	123	88	211	105	84	189	102	96	198
<i>60 years and above</i>	<i>2,886</i>	<i>2,890</i>	5,776	<i>2,846</i>	<i>2,903</i>	5,749	<i>3,000</i>	<i>2,869</i>	5,869	2,990	3,106	6,096	3,187	3,163	6,350	3,242	3,244	6,486
Crude death rate (per 1,000 population)	8.5	6.4	7.4	8.3	6.5	7.3	8.5	6.3	7.4	8.3	6.7	7.5	8.5	6.7	7.6	8.6	6.9	7.7
Infant mortality rate (per 1,000 live births)	14.7	12.0	13.3	13.5	11.3	12.4	13.6	11.7	12.6	15.5	11.2	13.4	13.7	10.8	12.2	14.1	14.0	14.1
Under 5 mortality rate (per 1,000 live births)	17.5	14.9	16.2	15.8	13.4	14.6	16.4	14.9	15.6	17.4	13.1	15.3	16.0	13.1	14.6	15.8	15.3	15.6
Maternal mortality rate (per 1,000 live births)	-. -	0.68	0.68	-. -	0.28	0.28	-. -	0.36	0.36	-. -	0.65	-. -	-. -	0.69	-. -	-. -	0.55	-. -

-. -: Not applicable

Source: Ministry of Health & Quality of Life

Table 3.1b - Number of deaths and death rates, Island of Rodrigues, 2009 - 2014

	2009			2010			2011			2012			2013			2014		
	Male	Female	Both Sexes	Male	Female	Both Sexes	Male	Female	Both Sexes	Male	Female	Both Sexes	Male	Female	Both Sexes	Male	Female	Both Sexes
Number of deaths	132	105	237	132	108	240	117	102	219	128	112	240	113	96	209	129	115	244
<i>of which:</i>																		
<i>Under 1 yr</i>	6	4	10	9	1	10	6	6	12	9	6	15	3	3	6	5	10	15
<i>Under 5 yrs</i>	-	-	-	11	1	12	6	9	15	9	8	17	5	4	9	5	11	16
<i>60 years and above</i>	82	78	160	80	80	160	83	70	153	83	87	170	86	73	159	92	81	173
Crude death rate (per 1,000 population)	6.3	5.2	5.8	6.4	5.2	5.8	6.3	5.2	5.8	5.9	5.0	5.4	5.5	4.6	5.1	6.3	5.4	5.9
Infant mortality rate (per 1,000 live births)	15.0	12.5	13.9	25.1	2.8	14.0	16.5	17.9	17.2	24.9	16.4	20.6	8.2	8.8	8.5	14.6	28.9	21.8
Under 5 mortality rate (per 1,000 live births)	15.0	12.5	13.9	30.6	2.8	16.8	16.5	26.8	21.5	24.9	21.9	23.4	13.8	11.8	12.8	14.6	31.8	23.3
Maternal mortality rate (per 1,000 live births)	-. -	-	-	-. -	1.40	1.40	-. -	-	-	-. -	-	-. -	-. -	-	-. -	-. -	-	-. -

-. -: Not applicable

Source: Ministry of Health & Quality of Life

Table 3.2 - Number of deaths by cause, Republic of Mauritius, Island of Mauritius & Island of Rodrigues, 2014

	Republic of Mauritius			Island of Mauritius			Island of Rodrigues		
	Male	Female	Both Sexes	Male	Female	Both Sexes	Male	Female	Both Sexes
Number of deaths	5,329	4,353	9,682	5,200	4,238	9,438	129	115	244
<i>% due to:</i>									
Heart disease	19.3	19.2	19.3	19.3	19.3	19.3	17.1	16.5	16.8
Cerebrovascular disease	7.3	8.6	7.9	7.3	8.6	7.9	7.8	10.4	9.0
Diabetes mellitus	23.0	27.3	24.9	23.2	27.4	25.1	16.3	20.9	18.4
Cirrhosis of liver	2.6	0.8	1.8	2.5	0.8	1.8	4.7	-	2.5
Suicide	1.9	0.6	1.3	1.8	0.6	1.3	3.1	1.7	2.5
Malignant neoplasm of female breast	-. -	3.4	1.5	-. -	3.4	1.5	-. -	5.2	2.5
Malignant neoplasm of uterus	-. -	1.5	0.7	-. -	1.5	0.7	-. -	3.5	1.6
Malignant neoplasm of prostate	1.5	-. -	0.8	1.5	-. -	0.8	2.3	-. -	1.2
Complications of pregnancy & childbirth	-. -	0.2	0.1	-. -	0.2	0.1	-. -	-	-
Other	44.4	38.4	41.7	44.4	38.2	41.5	48.7	41.8	45.5
Total	100.0	100.0	100.0	100.0	100.0	100.0	100.0	100.0	100.0

-. -: Not applicable

Source: Ministry of Health & Quality of Life

Table 3.3 - Infant deaths by cause and sex, Republic of Mauritius, 2010 - 2014

	2010			2011			2012			2013			2014		
	Male	Female	Both Sexes	Male	Female	Both Sexes	Male	Female	Both Sexes	Male	Female	Both Sexes	Male	Female	Both Sexes
Infant deaths	106	81	187	102	87	189	118	81	199	93	72	165	96	98	194
% due to															
Slow fetal growth, fetal malnutrition and immaturity	3.8	8.7	5.9	3.9	8.0	5.8	3.4	3.7	3.5	10.8	9.7	10.3	5.2	5.1	5.2
Congenital anomalies	24.5	25.9	25.1	26.4	25.3	25.9	21.2	25.9	23.1	24.7	13.9	20.0	24.0	29.6	26.8
Respiratory disorders specific to the perinatal period	43.4	25.9	35.8	26.5	32.2	29.1	32.2	28.4	30.7	29.0	25.0	27.3	27.1	21.4	24.2
Septicaemia & infections specific to the perinatal period	3.8	3.7	3.8	11.8	3.4	7.9	9.3	8.6	9.0	9.7	13.9	11.5	7.3	13.3	10.3
Other	24.5	35.8	29.4	31.4	31.1	31.3	33.9	33.4	33.7	25.8	37.5	30.9	36.4	30.6	33.5
Total	100.0	100.0	100.0	100.0	100.0	100.0	100.0	100.0	100.0	100.0	100.0	100.0	100.0	100.0	100.0

Source: Ministry of Health & Quality of Life

Table 3.3a - Infant deaths by cause and sex, Island of Mauritius, 2010 - 2014

	2010			2011			2012			2013			2014		
	Male	Female	Both Sexes	Male	Female	Both Sexes	Male	Female	Both Sexes	Male	Female	Both Sexes	Male	Female	Both Sexes
Infant deaths	97	80	177	96	81	177	109	75	184	90	69	159	91	88	179
% due to:															
Slow fetal growth, fetal malnutrition and immaturity	4.1	8.8	6.2	4.2	8.6	6.2	2.8	4.0	3.3	11.1	10.2	10.7	5.5	5.7	5.6
Congenital anomalies	25.8	25.0	25.4	27.1	24.7	26.0	20.2	25.3	22.3	25.6	14.5	20.8	24.2	30.7	27.4
Respiratory failure	40.2	26.3	33.9	28.1	33.3	30.5	32.1	30.7	31.5	30.0	26.1	28.3	26.4	19.4	22.9
Septicaemia & infections specific to the perinatal period	3.1	3.8	3.4	12.5	2.5	7.9	9.2	9.3	9.2	7.8	13.0	10.1	6.6	12.5	9.5
Other	26.8	36.3	31.1	28.1	30.9	29.4	35.7	30.7	33.7	25.5	36.2	30.1	37.3	31.7	34.6
Total	100.0	100.2	100.0	100.0	100.0	100.0	100.0	100.0	100.0	100.0	100.0	100.0	100.0	100.0	100.0

Table 3.3b - Infant deaths by cause and sex, Island of Rodrigues, 2010 - 2014

	2010			2011			2012			2013			2014		
	Male	Female	Both Sexes	Male	Female	Both Sexes	Male	Female	Both Sexes	Male	Female	Both Sexes	Male	Female	Both Sexes
Infant deaths	9	1	10	6	6	12	9	6	15	3	3	6	5	10	15
% due to:															
Slow fetal growth, fetal malnutrition and immaturity	-	-	-	-	-	-	11.1	-	6.7	-	-	-	-	-	-
Congenital anomalies	11.1	100.0	20.0	16.7	33.3	25.0	33.3	33.3	33.3	-	-	-	20.0	20.0	20.0
Respiratory failure	77.8	-	70.0	83.3	33.3	58.3	33.3	-	20.0	-	-	-	40.0	40.0	40.0
Septicaemia & infections specific to the perinatal period	11.1	-	10.0	-	16.7	8.3	11.1	-	6.7	66.6	33.3	50.0	20.0	20.0	20.0
Other	-	-	-	-	16.7	8.4	11.2	66.7	33.3	33.4	66.7	50.0	20.0	20.0	20.0
Total	100.0	100.0	100.0	100.0	100.0	100.0	100.0	100.0	100.0	100.0	100.0	100.0	100.0	100.0	100.0

Table 3.4 - Infant deaths by selected age and sex, Republic of Mauritius, 2009 - 2014

	2009			2010			2011			2012			2013			2014		
	Male	Female	Both Sexes	Male	Female	Both Sexes	Male	Female	Both Sexes	Male	Female	Both Sexes	Male	Female	Both Sexes	Male	Female	Both Sexes
Total infant deaths	114	91	205	106	81	187	102	87	189	118	81	199	93	72	165	96	98	194
of which:																		
Under 1 day	16	7	23	22	13	35	9	16	25	19	16	35	14	18	32	12	15	27
Under 7 days	59	40	99	65	33	98	49	46	95	57	41	98	49	33	82	39	43	82
Under 28 days	81	60	141	84	46	130	79	64	143	86	56	142	70	54	124	60	67	127
1 month to 11 months	33	31	64	22	35	57	23	23	46	32	25	57	23	18	41	36	31	67

Table 3.4a - Infant deaths by selected age and sex, Island of Mauritius, 2009 - 2014

	2009			2010			2011			2012			2013			2014		
	Male	Female	Both Sexes	Male	Female	Both Sexes	Male	Female	Both Sexes	Male	Female	Both Sexes	Male	Female	Both Sexes	Male	Female	Both Sexes
Total infant deaths	108	87	195	97	80	177	96	81	177	109	75	184	90	69	159	91	88	179
of which:																		
Under 1 day	14	7	21	18	13	31	9	15	24	19	16	35	14	8	22	12	14	26
Under 7 days	55	38	93	57	32	89	44	41	85	52	41	93	47	33	80	36	37	73
Under 28 days	77	58	135	76	45	121	73	59	132	78	56	134	68	54	122	57	61	118
1 month to 11 months	31	29	60	21	35	56	23	22	45	31	19	50	22	15	37	34	27	61

Table 3.4b - Infant deaths by selected age and sex, Island of Rodrigues, 2009 - 2014

	2009			2010			2011			2012			2013			2014		
	Male	Female	Both Sexes	Male	Female	Both Sexes	Male	Female	Both Sexes	Male	Female	Both Sexes	Male	Female	Both Sexes	Male	Female	Both Sexes
Total infant deaths	6	4	10	9	1	10	6	6	12	9	6	15	3	3	6	5	10	15
of which:																		
Under 1 day	2	-	2	4	-	4	-	1	1	-	-	-	-	-	-	-	1	1
Under 7 days	4	2	6	8	1	9	5	5	10	5	-	5	2	-	2	3	6	9
Under 28 days	4	2	6	8	1	9	6	5	11	8	-	8	2	-	2	3	6	9
1 month to 11 months	2	2	4	1	-	1	-	1	1	1	6	7	1	3	4	2	4	6

Source: Ministry of Health & Quality of Life

Table 3.5 - Number and percentage^{1/} of current users of Family Planning Methods^{2/}, Republic of Mauritius, as at 31st December 2010 - 2014

Method	2010		2011		2012		2013		2014	
	Number	%	Number	%	Number	%	Number	%	Number	%
Pill	13,022	3.7	11,749	3.3	11,582	3.5	10,662	3.3	10,210	3.1
Barrier	12,544	3.6	10,102	2.9	9,295	2.8	8,752	2.7	8,640	2.7
Intra Uterine Device	4,019	1.1	2,819	0.8	2,493	0.8	2,376	0.7	2,365	0.7
Injectable	5,044	1.4	5,008	1.4	4,918	1.5	4,971	1.5	4,822	1.5
Sympto-Thermal	29,225	8.3	30,633	8.7	29,795	9.1	29,824	9.1	29,410	9.1
Tubal Ligation	15,790	4.5	15,147	4.3	14,924	4.5	14,910	4.6	14,749	4.5
Norplant	1,011	0.3	1,189	0.3	1,521	0.5	1,639	0.5	1,592	0.5
Total	80,655	22.9	76,647	21.7	74,528	22.7	73,134	22.4	71,788	22.1

^{1/} The percentage using the different methods is calculated as the number using the method as a percentage of women aged 15 - 49 years in the respective years.

^{2/} Figures refer to Government Programme, Mauritius Family Planning Association & Action Familiale.

Source: Ministry of Health & Quality of Life

Table 3.5a - Number and percentage^{1/} of current users of Family Planning Methods^{2/}, Island of Mauritius, as at 31st December 2010 - 2014

Method	2010		2011		2012		2013		2014	
	Number	%	Number	%	Number	%	Number	%	Number	%
Pill	10,752	3.1	9,438	2.8	9,306	2.9	8,423	2.7	8,078	2.6
Barrier	11,733	3.4	9,250	2.7	8,761	2.8	8,222	2.6	8,123	2.6
Intra Uterine Device	3,785	1.1	2,593	0.8	2,368	0.7	2,242	0.7	2,246	0.7
Injectable	3,948	1.2	3,917	1.1	3,878	1.2	4,027	1.3	3,982	1.3
Sympto-Thermal	27,806	8.1	29,317	8.6	28,467	9.0	28,459	9.0	28,258	9.0
Tubal Ligation	15,540	4.5	14,902	4.4	14,672	4.6	14,653	4.6	14,532	4.6
Norplant	969	0.3	1,114	0.3	1,358	0.4	1,382	0.4	1,276	0.4
Total	74,533	21.8	70,531	20.6	68,810	20.1	67,408	21.3	66,495	21.2

^{1/} The percentage using the different methods is calculated as the number using the method as a percentage of women aged 15 - 49 years in the respective years.

^{2/} Figures refer to Government Programme, Mauritius Family Planning Association & Action Familiale.

Source: Ministry of Health & Quality of Life

Table 3.5b - Number and percentage^{1/} of current users of Family Planning Methods^{2/}, Island of Rodrigues, as at 31st December 2010 - 2014

Method	2010		2011		2012		2013		2014	
	Number	%	Number	%	Number	%	Number	%	Number	%
Pill	2,270	23.5	2,311	21.8	2,276	21.4	2,239	20.9	2,132	19.7
Barrier	811	8.4	852	8.1	534	5.0	530	4.9	517	4.8
Intra Uterine Device	234	2.4	226	2.1	125	1.2	134	1.3	119	1.1
Injectable	1,096	11.3	1,091	10.3	1,040	9.8	944	8.8	840	7.8
Sympto-Thermal	1,419	14.7	1,316	12.4	1,328	12.5	1,365	12.7	1,152	10.7
Tubal Ligation	250	2.6	245	2.3	252	2.4	257	2.4	217	2.0
Norplant	42	0.4	75	0.7	163	1.5	257	2.4	316	2.9
Total	6,122	63.4	6,116	57.8	5,718	53.7	5,726	53.4	5,293	49.0

^{1/} The percentage using the different methods is calculated as the number using the method as a percentage of women aged 15 - 49 years in the respective years.

^{2/} Figures refer to Government Programme, Mauritius Family Planning Association & Action Familiale.

Source: Ministry of Health & Quality of Life

Table 3.6 - Immunisation coverage rate* (Government Services), 2012 - 2014

	Island of Mauritius			Island of Rodrigues		
	2012	2013	2014	2012	2013	2014
BCG	87.2	86.1	86.5	100.0	98.0	94.7
DPT & Hepatitis (3 rd dose)/Polio	86.6	88.1	85.8	100.0	93.8	99.0
Polio (3 rd dose)	87.7	89.6	87.5	100.0	93.8	99.0
MMR ¹	88.5	89.7	88.2	93.5	93.5	91.4
Tetanus [second or higher dose (pregnant women)]	70.7	65.6	61.4	70.0	74.6	60.7

NB: The relatively high percentages observed in Rodrigues are most probably due to return to Rodrigues of babies born in the Island of Mauritius.

- 41 -

Table 3.7 - Number of new reported cases of HIV/AIDS and deaths, 2011 - 2014

Year	New cases of HIV/AIDS notified									Deaths registered among HIV/AIDS cases (Mauritian)		
	Mauritian			Non-Mauritian			Total			Male	Female	Both sexes
	Male	Female	Both sexes	Male	Female	Both sexes	Male	Female	Both sexes			
2011	298	103	401	10	6	16	308	109	417	79	13	92
2012	215	105	320	6	1	7	221	106	327	97	8	105
2013	151	109	260	7	4	11	158	113	271	99	15	114
2014	190	132	322	7	4	11	197	136	333	101	14	115

* as a percentage of registered live births

¹ Measles/Mumps/Rubella

Source: Ministry of Health & Quality of Life



EDUCATION

Table 4.1 - Main indicators, Republic of Mauritius, 2010 - 2014

	2010	2011	2012	2013	2014
Pre-primary					
Number of schools	1,042	1,018	1,026	978	957
State	183	184	185	186	186
Private	797	763	775	727	651
RCEA	12	11	11	10	10
Municipal /Village Council	62	60	55	55	55
Enrolment	35,139	33,901	33,518	31,419	30,142
Male	17,991	17,282	16,960	15,902	15,155
Female	17,148	16,619	16,558	15,517	14,987
Number of teachers	2,538	2,550	2,541	2,425	2,404
Gross Enrolment Ratio (%)*	96	97	100	98	98
Male*	96	96	100	99	98
Female*	96	98	101	97	98
Pupil/Teacher Ratio	14	13	13	13	13
Primary					
Number of schools	305	305	312	320	320
State	222	222	223	223	223
Private	83	83	89	97	97
Enrolment	117,432	116,068	113,634	108,853	105,300
Male	59,672	58,935	57,748	55,022	53,160
Female	57,760	57,133	55,886	53,831	52,140
Number of teachers	5,472	5,627	5,427	5,512	5,629
Gross Enrolment Ratio (%)*	101	100	99	98	97
Male*	101	100	99	97	97
Female*	101	100	99	98	98
Pupil/Teacher Ratio	28	27	28	26	25
Primary Completion Rate	73.2	71.2	68.9	73.1	75.7
Male	68.5	65.8	62.6	67.5	70.9
Female	78.1	76.9	75.4	78.8	80.6
Transition Rate (Primary to Secondary)	81.5	83.5	83.7	90.1	n.a
Male	79.0	80.7	80.7	88.2	n.a
Female	84.1	86.5	87.0	92.2	n.a
Certificate of Primary Education Pass Rate	68.5	68.6	68.8	74.8	72.9
Male	63.1	62.7	62.5	68.9	66.6
Female	74.4	74.9	75.5	81.0	79.7

* based on population figures revised according to the 2011 Population Census results

Table 4.1 (c'td) - Main indicators, Republic of Mauritius, 2010 - 2014

	2010	2011	2012	2013	2014
Secondary (Academic)					
Number of schools	182	180	178	176	176
State	69	69	68	68	68
Private(Confessional, Private/Aided, NonAided)	113	111	110	108	108
Enrolment	115,003	115,289	115,677	113,872	114,239
Male	54,855	55,188	55,374	54,391	54,590
Female	60,148	60,101	60,303	59,481	59,649
Number of teachers	7,695	7,873	8,014	7,795	7,430
Gross Enrolment Ratio (%)*	71	72	73	72	73
Male*	67	68	69	68	69
Female*	75	76	77	76	78
Pupil/Teacher Ratio	15	15	14	15	15
SC Pass rate	77.8	76.7	75.7	75.0	73.4
Male	73.3	71.8	69.6	70.3	70.1
Female	81.8	81.2	81.0	78.9	76.1
HSC Pass rate	78.5	79.3	79.1	77.9	75.4
Male	73.7	75.3	74.8	73.9	70.0
Female	81.7	82.3	82.2	80.8	79.1

Tertiary¹

Number of institutions	59	57	59	59	55
Enrolment	44,334	45,969	49,625	50,579	50,608
Gross Enrolment Ratio (%)	49	49	51	50	49

¹Source: Tertiary Education Commission

Table 4.2 - Government expenditure on education, Republic of Mauritius, 2010 - 2014

	2010	2011	2012	2013	2014
Total Government Expenditure (Rs million)	79,894.1	87,816.2	89,101.5	104,736.6	113,711.9
Total Government Expenditure on Education (Rs million)	10,880.9	11,017.4	11,986.1	13,932.1	15,370.8
Total Government Expenditure on Education as a % of GDP at market prices	3.6	3.4	3.5	3.8	3.9
Total Government Expenditure on Education as a % of Total Government Expenditure	13.6	12.5	13.5	13.3	13.5

* based on population figures revised according to the 2011 Population Census results

Table 4.3 - Total enrolment and percentage enrolment by level & sex, Republic of Mauritius, 2009 - 2014

	2009			2010			2011			2012			2013			2014		
	Male	Female	Both Sexes	Male	Female	Both Sexes	Male	Female	Both Sexes	Male	Female	Both Sexes	Male	Female	Both Sexes	Male	Female	Both Sexes
Pre-primary	50.3	49.7	35,974	51.2	48.8	35,139	51.0	49.0	33,901	51.0	49.0	33,518	50.6	49.4	31,419	50.3	49.7	30,142
Primary	50.8	49.2	117,922	50.8	49.2	117,432	50.8	49.2	116,068	50.8	49.2	113,634	50.5	49.5	108,853	50.5	49.5	105,300
Secondary	47.7	52.3	116,226	47.7	52.3	115,003	47.9	52.1	115,289	47.9	52.1	115,677	47.8	52.2	113,872	47.8	52.2	114,239
Tertiary	45.1	54.9	19,882	43.2	56.8	21,766	41.2	58.8	22,442	40.2	59.8	21,562	43.8	36.2	23,627	n.a	n.a	n.a

Table 4.3a - Total enrolment and percentage enrolment by level & sex, Island of Mauritius, 2009 - 2014

	2009			2010			2011			2012			2013			2014		
	Male	Female	Both Sexes	Male	Female	Both Sexes	Male	Female	Both Sexes	Male	Female	Both Sexes	Male	Female	Both Sexes	Male	Female	Both Sexes
Pre-primary	50.3	49.7	34,288	50.8	49.2	33,562	51.2	48.8	32,332	50.7	49.3	31,911	50.5	49.5	29,946	50.1	49.9	28,768
Primary	50.8	49.2	112,884	50.8	49.2	112,309	50.7	49.3	110,907	50.8	49.2	108,519	50.5	49.5	103,641	50.5	49.5	100,221
Secondary	47.7	52.3	112,572	47.7	52.3	111,418	47.9	52.1	111,753	47.9	52.1	111,753	47.8	52.2	109,868	47.8	52.2	110,164

Table 4.3b - Total enrolment and percentage enrolment by level & sex, Island of Rodrigues, 2009 - 2014

	2009			2010			2011			2012			2013			2014		
	Male	Female	Both Sexes	Male	Female	Both Sexes	Male	Female	Both Sexes	Male	Female	Both Sexes	Male	Female	Both Sexes	Male	Female	Both Sexes
Pre-primary	50.1	49.9	1,686	50.5	49.5	1,577	49.7	50.3	1,569	48.6	51.4	1,607	52.1	47.9	1,473	53.1	46.9	1,374
Primary	51.2	48.8	5,038	50.8	49.2	5,123	51.8	48.2	5,161	50.9	49.1	5,115	50.5	49.5	5,212	50.4	49.6	5,079
Secondary	46.3	53.7	3,654	46.2	53.8	3,585	46.4	53.6	3,536	46.0	54.0	3,924	45.9	54.1	4,004	46.1	53.9	4,075

Table 4.4 - Enrolment in pre-primary, primary & secondary schools by standard/form & sex, Republic of Mauritius, 2012 - 2014

Standard / Form	2012			2013			2014		
	Male	Female	Both sexes	Male	Female	Both sexes	Male	Female	Both sexes
Preprimary	16,960	16,558	33,518	15,902	15,517	31,419	15,155	14,987	30,142
Primary Level	57,748	55,886	113,634	55,022	53,831	108,853	53,160	52,140	105,300
Std I	8,683	8,284	16,967	8,476	8,310	16,786	7,984	7,939	15,923
Std II	9,158	8,948	18,106	8,587	8,221	16,808	8,441	8,345	16,786
Std III	9,320	9,220	18,540	9,119	8,849	17,968	8,620	8,235	16,855
Std IV	9,374	9,089	18,463	9,243	9,221	18,464	9,090	8,917	18,007
Std V	9,495	9,437	18,932	9,236	9,124	18,360	9,226	9,218	18,444
Std VI	9,247	9,212	18,459	9,318	9,386	18,704	9,208	9,043	18,251
Std VI (Repeaters)	2,471	1,696	4,167	1,043	720	1,763	591	443	1,034
Std VI (inc.repeaters)	11,718	10,908	22,626	10,361	10,106	20,467	9,799	9,486	19,285
Secondary level	55,374	60,303	115,677	54,391	59,481	113,872	54,590	59,649	114,239
Form I	8,290	8,785	17,075	8,017	8,670	16,687	8,750	9,130	17,880
Form II	8,493	8,837	17,330	8,336	8,937	17,273	8,112	8,815	16,927
Form III	8,301	8,612	16,913	8,486	8,692	17,178	8,604	9,033	17,637
Form IV	9,094	9,742	18,836	9,107	9,455	18,562	9,274	9,333	18,607
Form V	10,140	10,609	20,749	9,628	10,112	19,740	9,450	10,022	19,472
Form VI Lower	5,579	6,847	12,426	5,401	6,750	12,151	4,971	6,279	11,250
Form VI Upper	5,477	6,871	12,348	5,416	6,865	12,281	5,429	7,037	12,466
Form VI L - VI U	11,056	13,718	24,774	10,817	13,615	24,432	10,400	13,316	23,716
Secondary level Prevocational	4,641	2,580	7,221	6,869	3,568	10,437	6,736	3,655	10,391
Year I	1,724	950	2,674	3,161	1,658	4,819	1,836	1,052	2,888
Year II	1,492	872	2,364	1,472	730	2,202	2,388	1,274	3,662
Year III	1,425	758	2,183	1,228	701	1,929	1,374	723	2,097
NTCF				1,008	479	1,487	1,138	606	1,744
Enrolment in private schools									
Preprimary level	13,789	13,332	27,121	12,783	12,401	25,184	12,152	11,933	24,085
Primary level	16,585	16,194	32,779	16,307	16,071	32,378	16,225	16,063	32,288
Secondary level	31,960	33,850	65,810	31,185	33,069	64,254	31,701	33,242	64,943
Enrolment in state schools									
Preprimary level	3,171	3,226	6,397	3,119	3,116	6,235	3,003	3,054	6,057
Primary level	41,163	39,692	80,855	38,715	37,760	76,475	36,935	36,077	73,012
Secondary level	23,414	26,453	49,867	23,206	26,412	49,618	22,889	26,407	49,296

Table 4.5 - Enrolment & pass rates by sex, Republic of Mauritius, 2008 - 2014

	2008			2009			2010			2011			2012			2013			2014		
	Male	Female	Both Sexes	Male	Female	Both Sexes	Male	Female	Both Sexes	Male	Female	Both Sexes	Male	Female	Both Sexes	Male	Female	Both Sexes	Male	Female	Both Sexes
Enrolment rate																					
Primary	101	99	100	100	100	100	101	101	101	100	100	100	99	99	99	97	98	98	97	98	97
Secondary	67	74	70	67	75	71	67	75	71	68	76	72	69	77	73	68	76	72	69	78	73
Pass rate (%)																					
CPE	62.1	73.2	67.4	62.3	74.5	68.1	63.1	74.4	68.5	62.7	74.9	68.6	62.5	75.5	68.8	68.9	81.0	74.8	66.6	79.7	72.9
SC	71.5	80.9	76.5	71.8	82.7	77.6	73.3	81.8	77.8	71.8	81.2	76.7	69.6	81.0	75.7	70.3	78.9	75.0	70.1	76.1	73.4
HSC	74.4	82.2	78.7	74.2	82.1	78.8	73.7	81.7	78.3	75.3	82.3	79.3	74.8	82.2	79.1	73.9	80.8	77.9	70.0	79.1	75.4

Table 4.5a - Enrolment & pass rates by sex, Island of Mauritius, 2008 - 2014

	2008			2009			2010			2011			2012			2013			2014		
	Male	Female	Both Sexes	Male	Female	Both Sexes	Male	Female	Both Sexes	Male	Female	Both Sexes	Male	Female	Both Sexes	Male	Female	Both Sexes	Male	Female	Both Sexes
Enrolment rate																					
Primary	100	99	100	100	100	100	101	100	100	100	100	100	99	99	99	97	98	98	96	98	97
Secondary	67	75	71	67	75	71	67	75	71	69	76	73	69	77	73	68	77	72	69	78	73
Pass rate (%)																					
CPE	62.6	73.8	68.0	62.9	74.8	68.6	63.5	74.6	68.8	63.0	75.1	68.8	63.0	75.8	69.2	69.1	81.3	74.9	66.8	79.8	73.1
SC	71.5	81.2	76.7	71.9	82.9	77.8	73.3	82.2	78.0	71.6	81.2	76.7	69.5	81.3	75.8	70.3	79.1	75.1	69.9	76.3	73.4
HSC	74.6	82.3	78.9	74.5	82.3	78.9	74.0	81.8	78.5	75.1	82.3	79.2	74.6	82.3	79.1	73.9	80.8	77.9	70.3	79.2	75.6

Table 4.5b - Enrolment & pass rates by sex, Island of Rodrigues, 2008 - 2014

	2008			2009			2010			2011			2012			2013			2014		
	Male	Female	Both Sexes	Male	Female	Both Sexes	Male	Female	Both Sexes	Male	Female	Both Sexes	Male	Female	Both Sexes	Male	Female	Both Sexes	Male	Female	Both Sexes
Enrolment rate																					
Primary	106	103	104	105	102	104	105	104	105	104	100	102	103	102	102	105	102	103	102	100	101
Secondary	53	61	57	57	64	61	57	64	60	58	65	61	62	71	66	61	71	66	63	71	67
Pass rate (%)																					
CPE	50.0	61.0	55.2	49.6	65.7	57.1	54.1	70.6	61.7	56.2	69.9	62.7	51.8	68.7	59.9	66.2	76.5	71.1	62.7	77.4	69.7
SC	71.4	71.7	71.6	70.4	76.3	73.8	73.7	72.0	72.8	78.2	79.2	78.8	72.9	73.7	73.3	70.6	73.7	73.3	76.6	70.3	73.0
HSC	69.6	77.6	73.9	67.8	76.7	72.8	69.2	81.6	76.1	81.4	83.1	82.4	81.2	81.5	81.4	74.0	82.2	78.6	60.6	74.3	69.2

Table 4.6 - Number of teachers in primary and secondary schools, Republic of Mauritius, 2008 - 2014

Year	Primary Schools				Secondary Schools			
	Male	Female	Both Sexes	% Female	Male	Female	Both Sexes	% Female
2008	1,844	3,651	5,495	66.4	3,209	4,199	7,408	56.7
2009	1,744	3,710	5,454	68.0	3,256	4,308	7,564	57.0
2010	1,650	3,822	5,472	69.8	3,269	4,426	7,695	57.5
2011	1,655	3,559	5,214	68.3	3,258	4,615	7,873	58.6
2012	1,511	3,916	5,427	72.2	3,287	4,727	8,014	59.0
2013	1,488	4,024	5,512	73.0	3,175	4,620	7,795	59.3
2014	1,428	4,201	5,629	74.6	2,954	4,476	7,430	60.2

Table 4.6a - Number of teachers in primary and secondary schools, Island of Mauritius, 2008 - 2014

Year	Primary Schools				Secondary Schools			
	Male	Female	Both Sexes	% Female	Male	Female	Both Sexes	% Female
2008	1,762	3,537	5,299	66.7	3,112	4,085	7,197	56.8
2009	1,655	3,587	5,242	68.4	3,158	4,197	7,355	57.1
2010	1,564	3,697	5,261	70.3	3,174	4,316	7,490	57.6
2011	1,567	3,919	5,486	71.4	3,162	4,496	7,658	58.7
2012	1,418	3,785	5,203	72.7	3,186	4,605	7,791	59.1
2013	1,391	3,885	5,276	73.6	3,073	4,490	7,563	59.4
2014	1,337	4,055	5,392	75.2	2,862	4,356	7,218	60.3

Table 4.6b - Number of teachers in primary and secondary schools, Island of Rodrigues, 2008 - 2014

Year	Primary Schools				Secondary Schools			
	Male	Female	Both Sexes	% Female	Male	Female	Both Sexes	% Female
2008	82	114	196	58.2	97	114	211	54.0
2009	89	123	212	58.0	98	111	209	53.1
2010	86	125	211	59.2	95	110	205	53.7
2011	88	127	215	59.1	96	119	215	55.3
2012	93	131	224	58.5	101	122	223	54.7
2013	97	139	236	58.9	102	130	232	56.0
2014	91	146	237	61.6	92	120	212	56.6

Table 4.7 - Percentage distribution of population 15 years & above by educational attainment & sex, Republic of Mauritius, 2000 & 2011 Population Censuses

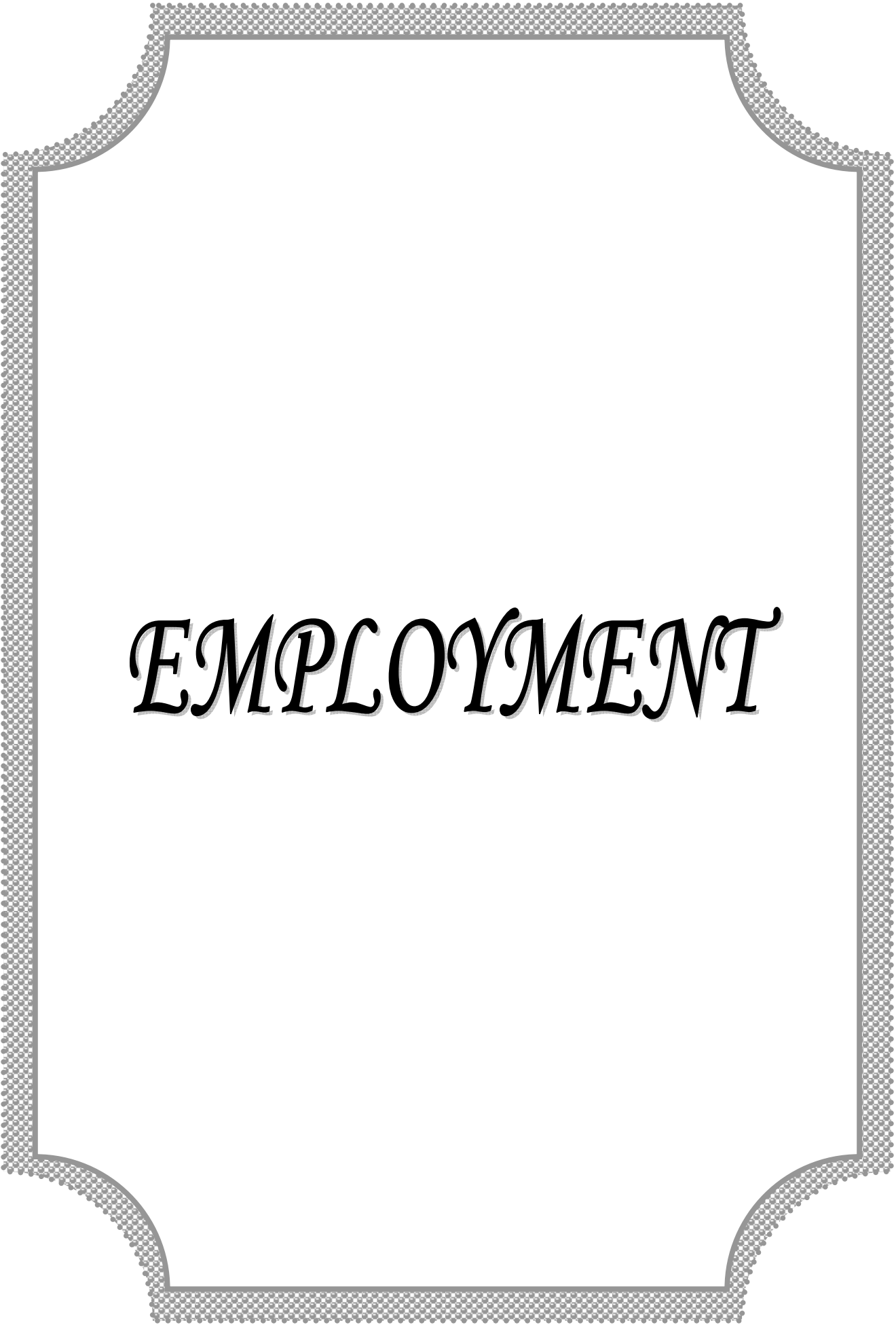
Educational attainment	2000			2011		
	Male	Female	Both sexes	Male	Female	Both sexes
Population (15 years & above) ('000)	431.3	445.7	877	473.6	494.7	968.3
Nil & pre-primary	5.3	13.6	9.6	2.6	8.0	5.4
Primary	40.2	40.3	40.2	32.4	34.0	33.2
<i>of which:</i>						
<i>Lower primary</i>	35.1	35.1	35.1	22.4	22.7	22.5
<i>Passed CPE</i>	5.1	5.2	5.1	10.0	11.3	10.7
Secondary	51.4	44.7	48.0	59.4	54.1	56.7
<i>of which:</i>						
<i>Form I - III</i>	10.5	9.3	9.9	13.4	11.0	12.2
<i>Form IV & V</i>	19.3	16.4	17.8	16.2	14.2	15.1
<i>Passed SC or equivalent</i>	14.6	12.6	13.6	19.4	17.9	18.7
<i>Passed HSC or equivalent</i>	7.0	6.4	6.7	10.4	11.0	10.7
University degree or equivalent	3.1	1.4	2.2	5.6	3.9	4.7
Total	100.0	100.0	100.0	100.0	100.0	100.0

Table 4.7a - Percentage distribution of population 15 years and above by educational attainment & sex, Island of Mauritius, 2000 & 2011 Population Censuses

Educational attainment	2000			2011		
	Male	Female	Both sexes	Male	Female	Both sexes
Population (15 years & above) ('000)	419.2	433.2	852.4	459.9	480.1	939.9
Nil & pre-primary	5.7	13.6	9.8	2.5	8.0	5.3
Primary	39.3	39.7	39.5	31.9	33.5	32.8
<i>of which:</i>						
<i>Lower primary</i>	<i>34.3</i>	<i>34.6</i>	<i>34.4</i>	<i>21.8</i>	<i>22.1</i>	<i>22.1</i>
<i>Passed CPE</i>	<i>5.0</i>	<i>5.1</i>	<i>5.1</i>	<i>10.1</i>	<i>11.4</i>	<i>10.7</i>
Secondary	51.8	45.3	48.4	59.9	54.5	57.1
<i>of which:</i>						
<i>Form 1 - 111</i>	<i>10.5</i>	<i>9.4</i>	<i>9.9</i>	<i>13.4</i>	<i>11.0</i>	<i>12.1</i>
<i>Form IV & V</i>	<i>19.5</i>	<i>16.5</i>	<i>18.0</i>	<i>16.4</i>	<i>14.3</i>	<i>15.3</i>
<i>Passed SC or equivalent</i>	<i>14.7</i>	<i>12.8</i>	<i>13.7</i>	<i>19.6</i>	<i>18.0</i>	<i>18.8</i>
<i>Passed HSC or equivalent</i>	<i>7.1</i>	<i>6.6</i>	<i>6.8</i>	<i>10.5</i>	<i>11.2</i>	<i>10.9</i>
University degree or equivalent	3.2	1.4	2.3	5.7	4.0	4.8
Total	100.0	100.0	100.0	100.0	100.0	100.0

**Table 4.7b - Percentage distribution of population 15 years and above by educational attainment & sex, Island of Rodrigues,
2000 & 2011 Population Censuses**

Educational attainment	2000			2011		
	Male	Female	Both sexes	Male	Female	Both sexes
Population (15 years & above) ('000)	12.1	12.5	24.6	13.8	14.6	28.4
Nil & pre-primary	11.5	14.0	19.7	6.7	8.7	7.7
Primary	60.9	59.8	67.9	48.5	48.9	48.7
<i>of which:</i>						
<i>Lower primary</i>	54.6	53.5	60.0	40.1	39.4	39.7
<i>Passed CPE</i>	6.3	6.3	7.9	8.4	9.5	9.0
Secondary	27.0	25.9	12.3	43.1	41.3	42.2
<i>of which:</i>						
<i>Form 1 - III</i>	7.1	6.5	5.1	13.4	11.3	12.4
<i>Form IV & V</i>	10.4	11.1	3.3	9.7	11.1	10.4
<i>Passed SC or equivalent</i>	7.8	6.8	3.4	14.5	13.4	13.9
<i>Passed HSC or equivalent</i>	1.7	1.5	0.5	5.5	5.6	5.5
University degree or equivalent	0.6	0.3	0.1	1.7	1.1	1.4
Total	100.0	100.0	100.0	100.0	100.0	100.0



EMPLOYMENT

Table 5.1* - Percentage distribution of the population aged 16 years and over by activity status & sex, Republic of Mauritius, 2009 - 2014

Activity status	2009			2010			2011			2012			2013			2014		
	Male	Female	Both sexes	Male	Female	Both sexes	Male	Female	Both sexes	Male	Female	Both sexes	Male	Female	Both sexes	Male	Female	Both sexes
Employed	72.3	37.0	54.2	72.2	38.0	54.7	71.1	37.6	54.0	71.1	37.9	54.1	71.1	39.8	55.1	71.1	40.2	55.3
Unemployed	3.3	5.2	4.3	3.4	5.6	4.5	3.8	5.3	4.6	3.9	5.5	4.7	4.0	5.5	4.8	4.1	5.2	4.7
Not economically active	24.4	57.8	41.5	24.4	56.4	40.8	25.1	57.1	41.4	25.0	56.6	41.2	24.9	54.7	40.1	24.8	54.6	40.0
of whom:																		
<i>Homemakers</i>	<i>0.1</i>	<i>37.2</i>	<i>19.1</i>	<i>0.1</i>	<i>34.7</i>	<i>17.8</i>	<i>0.1</i>	<i>31.7</i>	<i>16.2</i>	<i>0.1</i>	<i>31.7</i>	<i>16.2</i>	<i>0.1</i>	<i>29.6</i>	<i>15.2</i>	<i>0.1</i>	<i>32.8</i>	<i>16.8</i>
<i>Students</i>	<i>9.7</i>	<i>8.7</i>	<i>9.2</i>	<i>9.4</i>	<i>8.8</i>	<i>9.1</i>	<i>8.7</i>	<i>8.5</i>	<i>8.6</i>	<i>8.6</i>	<i>8.7</i>	<i>8.7</i>	<i>8.4</i>	<i>8.7</i>	<i>8.5</i>	<i>8.1</i>	<i>8.5</i>	<i>8.3</i>
<i>Retired/old persons/ other</i>	<i>14.6</i>	<i>11.9</i>	<i>13.2</i>	<i>14.9</i>	<i>12.9</i>	<i>13.9</i>	<i>16.3</i>	<i>16.9</i>	<i>16.6</i>	<i>16.3</i>	<i>16.2</i>	<i>16.3</i>	<i>16.4</i>	<i>16.4</i>	<i>16.4</i>	<i>16.6</i>	<i>13.3</i>	<i>14.9</i>
Total	100.0	100.0	100.0	100.0	100.0	100.0	100.0	100.0	100.0	100.0	100.0	100.0	100.0	100.0	100.0	100.0	100.0	100.0

*based on population figures revised according to the 2011 Population Census results

Table 5.2* - Percentage distribution of the employed population aged 16 years and over by major occupational group & sex, Republic of Mauritius, 2009 - 2014

Occupation	2009			2010			2011			2012			2013			2014		
	Male	Female	Both sexes	Male	Female	Both sexes	Male	Female	Both sexes	Male	Female	Both sexes	Male	Female	Both sexes	Male	Female	Both sexes
Legislators, senior officials and managers	3.3	2.1	2.9	3.6	2.3	3.1	4.3	2.3	3.6	3.9	2.1	3.2	4.7	3.9	4.4	5.4	3.6	4.7
Professionals, associate professionals & technicians	11.8	17.1	13.7	12.3	18.4	14.5	14.3	20.1	16.3	15.4	20.1	17.0	16.9	24.2	19.6	17.3	24.7	20.1
Clerks	6.0	16.7	9.7	6.7	16.4	10.1	5.9	15.7	9.4	5.4	15.4	9.0	4.9	13.9	8.3	5.3	13.5	8.3
Service & sales workers	17.7	21.6	19.0	17.8	22.0	19.3	20.2	23.4	21.3	19.5	24.2	21.2	18.2	22.7	19.9	18.0	23.5	20.0
Skilled agricultural workers	5.3	2.7	4.4	5.6	3.0	4.6	5.4	2.6	4.4	5.9	2.7	4.8	5.8	2.8	4.7	6.0	3.1	4.9
Craft workers, plant & machine operators	37.8	16.6	30.4	37.1	15.0	29.3	35.2	12.8	27.3	36.0	11.6	27.3	37.1	10.4	27.1	35.6	9.3	25.9
Elementary Occupations	18.1	23.2	19.9	16.9	22.9	19.1	14.7	23.1	17.7	13.9	23.9	17.5	12.4	22.1	16.0	12.4	22.3	16.1
Total	100.0	100.0	100.0	100.0	100.0	100.0	100.0	100.0	100.0	100.0	100.0	100.0	100.0	100.0	100.0	100.0	100.0	100.0

* based on population figures revised according to the 2011 Population Census results

Table 5.3* - Percentage distribution of the employed population aged 16 years and over by industrial sector and sex, Republic of Mauritius, 2009 - 2014

Industrial sector	2009			2010			2011			2012			2013			2014		
	Male	Female	Both sexes	Male	Female	Both sexes	Male	Female	Both sexes	Male	Female	Both sexes	Male	Female	Both sexes	Male	Female	Both sexes
Primary	9.6	8.2	9.1	9.3	7.6	8.7	8.8	6.4	7.9	8.6	6.5	7.8	8.3	5.8	7.4	8.7	5.8	7.6
Secondary	32.6	23.4	29.4	32.6	21.5	28.7	31.8	20.9	27.9	32.2	20.0	27.8	32.0	17.9	26.8	31.1	17.6	26.1
Tertiary	57.8	68.4	61.5	58.1	70.9	62.6	59.4	72.7	64.2	59.2	73.5	64.4	59.7	76.3	65.8	60.2	76.6	66.3
Total	100.0	100.0	100.0	100.0	100.0	100.0	100.0	100.0	100.0	100.0	100.0	100.0	100.0	100.0	100.0	100.0	100.0	100.0

* based on population figures revised according to the 2011 Population Census results

Table 5.4 - Percentage number of income earners by monthly income range and sex, Republic of Mauritius, 2009 - 2014

Monthly income range (Rs)	2009			2010			2011			2012			2013			2014		
	Male	Female	Both sexes	Male	Female	Both sexes	Male	Female	Both sexes	Male	Female	Both sexes	Male	Female	Both sexes	Male	Female	Both sexes
Up to 2,000	2.2	8.6	4.3	2.4	8.1	4.5	3.6	11.8	6.5	4.7	13.7	7.9	4.6	13.9	8.0	4.3	13.7	7.8
2,001 - 4,000	5.3	21.6	10.8	4.2	18.1	9.4	4.3	16.9	8.8	3.9	13.9	7.5	4.2	12.7	7.3	4.1	10.7	6.5
4,001 - 6,000	11.9	20.0	14.6	9.8	19.2	13.2	8.8	17.9	12.0	7.0	16.5	10.5	8.1	14.3	10.4	6.3	13.5	9.0
6,001 - 8,000	16.4	11.2	14.7	14.6	12.7	13.9	14.1	12.0	13.3	12.8	13.4	13.0	11.1	11.8	11.4	9.6	10.9	10.1
8,001 - 10,000	16.2	9.3	13.9	15.4	8.9	13.0	16.2	8.5	13.5	14.9	9.0	12.8	14.3	9.5	12.5	12.1	9.7	11.2
10,001 - 15,000	21.5	10.9	17.9	22.7	12.2	18.8	21.5	11.9	18.1	22.3	11.5	18.4	21.5	12.4	18.2	21.3	12.8	18.1
15,001 - 20,000	9.7	6.9	8.7	11.3	7.1	9.7	10.9	6.9	9.5	12.3	7.6	10.6	12.5	7.6	10.7	14.3	8.6	12.2
20,001 - 30,000	9.3	8.2	8.9	10.6	9.5	10.2	10.2	8.0	9.4	11.0	8.2	10.0	12.1	9.5	11.2	12.6	9.4	11.4
30,001 and above	7.4	3.4	6.1	9.1	4.1	7.2	10.3	6.1	8.8	11.0	6.2	9.2	11.6	8.3	10.3	15.5	10.8	13.8
Total	100.0	100.0	100.0	100.0	100.0	100.0	100.0	100.0	100.0	100.0	100.0	100.0	100.0	100.0	100.0	100.0	100.0	100.0
Average monthly income per income earner (Rs)	14,430	9,460	12,760	15,700	10,500	13,900	16,400	11,000	14,500	17,100	11,800	15,300	17,900	13,300	16,200	19,900	14,800	18,100

Table 5.5 - Employment in Government Services¹ by occupation & sex, Republic of Mauritius, 2010 - 2014

Occupation	2010			2011			2012			2013			2014		
	Male	Female	Both Sexes	Male	Female	Both Sexes	Male	Female	Both Sexes	Male	Female	Both Sexes	Male	Female	Both Sexes
Total Government Services	43,917	19,486	63,403	41,617	19,972	61,589	38,256	18,988	57,244	38,210	19,838	58,048	40,167	20,999	61,166
<i>Legislators, Senior Officials & Managers</i>	<i>1,472</i>	<i>903</i>	<i>2,375</i>	<i>1,511</i>	<i>945</i>	<i>2,456</i>	<i>1,482</i>	<i>942</i>	<i>2,424</i>	<i>1,589</i>	<i>1,023</i>	<i>2,612</i>	<i>1,558</i>	<i>1,115</i>	<i>2,673</i>
<i>of whom as:</i>															
Senior Chief Executive	-	1	1	1	2	3	1	4	5	2	1	3	6	1	7
Permanent Secretary	13	7	20	15	6	21	20	10	30	17	11	28	26	29	55
Deputy Permanent Secretary	42	22	64	40	21	61	30	22	52	43	23	66	37	34	71
Director/Manager	201	119	320	190	98	288	193	118	311	232	139	371	239	179	418
Rector & Principal	48	26	74	65	38	103	48	26	74	69	43	112	62	42	104
Headteacher & Deputy Headteacher	623	541	1,164	624	562	1,186	602	552	1,154	541	542	1,083	541	544	1,085
Ambassador	17	3	20	13	3	16	15	3	18	18	5	23	17	5	22
First Secretary	19	4	23	16	4	20	17	6	23	17	5	22	13	4	17
Second Secretary	28	16	44	27		27	26	13	39	26	12	38	29	15	44
Professionals	3,241	2,286	5,527	3,090	2,162	5,252	2,466	2,479	4,945	2,722	2,658	5,380	3,036	2,998	6,034
<i>of whom as:</i>															
Educator	1,351	1,518	2,869	1,276	1,409	2,685	1,080	1,749	2,829	997	1,803	2,800	1,054	1,944	2,998
Medical Doctor	600	254	854	551	243	794	430	211	641	494	260	754	511	272	783
Dentist	44	26	70	41	24	65	32	21	53	31	24	55	35	30	65
Analyst/Programmer	29	46	75	35	49	84	29	43	72	90	83	173	115	123	238
Scientific Officer	59	34	93	59	30	89	55	24	79	63	26	89	62	35	97
Engineer	95	6	101	93	9	102	109	12	121	106	10	116	97	8	105
Pharmacist	16	7	23	13	8	21	12	10	22	12	9	21	15	14	29
Judge	10	8	18	12	8	20	12	8	20	13	8	21	10	8	18
Magistrate	18	27	45	15	26	41	17	25	42	17	32	49	13	29	42
Statistician	18	12	30	18	12	30	24	19	43	22	16	38	24	19	43
Accountant & Auditor	39	34	73	45	35	80	42	36	78	42	39	81	40	36	76

Employment data includes both Central & Local governments

¹ includes those on acting appointment

Table 5.5 ctd/... - Employment in Government Services¹ by occupation & sex , Republic of Mauritius, 2010 - 2014

Occupation	2010			2011			2012			2013			2014		
	Male	Female	Both Sexes	Male	Female	Both Sexes	Male	Female	Both Sexes	Male	Female	Both Sexes	Male	Female	Both Sexes
Technicians & Associate Professionals	7,945	9,112	17,057	8,014	9,690	17,704	7,831	9,074	16,905	7,724	9,834	17,558	7,623	10,447	18,070
<i>of whom as:</i>															
Teacher & Senior Teacher	1,465	2,944	4,409	1,395	3,270	4,665	1,183	2,477	3,660	1,214	3,344	4,558	1,084	3,096	4,180
Nursing Officer, Midwife & Student Nurse	1,388	2,024	3,412	1,405	2,026	3,431	1,418	2,134	3,552	1,297	1,922	3,219	1,272	1,940	3,212
Community Health Worker	39	144	183	44	53	97	33	172	205	39	152	191	42	149	191
Assistant Permanent Secretary	53	63	116	47	62	109	58	75	133	49	58	107	62	76	138
Technical Officer & Technician	168	77	245	154	86	240	150	83	233	146	79	225	138	101	239
Dispenser	307	127	434	311	127	438	159	78	237	151	96	247	193	89	282
Labour Inspector	45	29	74	43	32	75	40	34	74	44	42	86	42	44	86
Clerks	1,542	3,919	5,461	1,478	3,896	5,374	1,318	3,706	5,024	1,223	3,441	4,664	1,593	3,498	5,091
<i>of whom as:</i>															
Management Support Officer & School Clerk	1,305	2,538	3,843	1,263	2,611	3,874	1,149	2,464	3,613	1,033	2,153	3,186	1,272	2,480	3,752
Confidential Secretary & Word Processing Operator	15	1,171	1,186	14	1,147	1,161	16	1,054	1,070	20	1,077	1,097	153	886	1,039
Telephonist	199	78	277	155	75	230	105	64	169	112	54	166	134	71	205
Service Workers	11,510	842	12,352	11,121	803	11,924	11,573	1,032	12,605	11,897	1,022	12,919	12,790	1,208	13,998
<i>of whom as:</i>															
Police Constable & Sergeant	9,744	704	10,448	9,427	681	10,108	9,814	886	10,700	10,216	867	11,083	10,737	1,024	11,761
Prison Guard/Officer	861	68	929	824	66	890	888	70	958	840	78	918	963	79	1,042
Fireman/Fire Officer	677	-	677	646	-	646	665	5	670	619	5	624	648	5	653
Skilled Agricultural & Fishery Workers	280	1	281	191	1	192	197	1	198	179	-	179	190	-	190
Craft & Related Trade Workers	3,049	32	3,081	3,068	46	3,114	2,578	49	2,627	2,363	28	2,391	2,257	113	2,370
Plant & Machine Operators	1,923	30	1,953	1,922	25	1,947	1,704	24	1,728	1,624	26	1,650	1,810	62	1,872
Elementary Occupations	12,955	2,361	15,316	11,222	2,404	13,626	9,107	1,681	10,788	8,889	1,806	10,695	9,310	1,558	10,868
<i>of whom as:</i>															
Attendant, Hospital Servant & Caretaker	4,143	1,827	5,970	4,081	1,839	5,920	3,296	1,396	4,692	3,325	1,466	4,791	3,592	1,164	4,756
Labourer, Agricul. Worker & Gardener	5,149	470	5,619	4,311	513	4,824	3,231	257	3,488	3,398	315	3,713	3,650	325	3,975

Employment data includes both Central & Local governments

¹ includes those on acting appointment

Table 5.5a - Employment in Government Services¹ by occupation & sex, Island of Mauritius, 2010 - 2014

Occupation	2010			2011			2012			2013			2014		
	Male	Female	Both Sexes	Male	Female	Both Sexes	Male	Female	Both Sexes	Male	Female	Both Sexes	Male	Female	Both Sexes
Total Government Services	41,925	18,876	60,801	39,737	19,316	59,053	36,512	18,256	54,768	36,459	19,089	55,548	38,456	20,260	58,716
<i>Legislators, Senior Officials & Managers</i>	<i>1,429</i>	<i>887</i>	<i>2,316</i>	<i>1,470</i>	<i>919</i>	<i>2,389</i>	<i>1,437</i>	<i>923</i>	<i>2,360</i>	<i>1,542</i>	<i>993</i>	<i>2,535</i>	<i>1,511</i>	<i>1,096</i>	<i>2,607</i>
<i>of whom as:</i>															
Senior Chief Executive	-	1	1	1	2	3	1	4	5	2	1	3	6	1	7
Permanent Secretary	13	7	20	15	6	21	20	10	30	17	11	28	26	29	55
Deputy Permanent Secretary	42	22	64	40	21	61	30	22	52	43	23	66	37	34	71
Director/Manager	199	118	317	189	98	287	190	118	308	230	139	369	236	173	409
Rector & Principal	48	26	74	65	38	103	48	26	74	69	43	112	62	42	104
Headteacher & Deputy Headteacher	609	530	1,139	610	550	1,160	587	541	1,128	527	530	1,057	525	533	1,058
Ambassador	17	3	20	13	3	16	15	3	18	18	5	23	17	5	22
First Secretary	19	4	23	16	4	20	17	6	23	17	5	22	13	4	17
Second Secretary	28	16	44	27	16	43	26	13	39	26	12	38	29	15	44
Professionals	3,147	2,273	5,420	3,004	2,150	5,154	2,417	2,431	4,848	2,672	2,608	5,280	2,945	2,980	5,925
<i>of whom as:</i>															
Educator	1,351	1,518	2,869	1,276	1,409	2,685	1,080	1,749	2,829	997	1,803	2,800	1,054	1,944	2,998
Medical Doctor	591	249	840	545	237	782	419	207	626	487	255	742	503	266	769
Dentist	42	26	68	39	24	63	30	21	51	29	24	53	31	30	61
Analyst/Programmer	29	46	75	34	49	83	28	43	71	89	83	172	114	123	237
Scientific Officer	54	34	88	53	30	83	49	24	73	57	26	83	56	35	91
Engineer	93	6	99	92	9	101	108	12	120	105	10	115	96	8	104
Pharmacist	16	7	23	13	8	21	12	10	22	12	9	21	15	14	29
Judge	10	8	18	12	8	20	12	8	20	13	8	21	10	8	18
Magistrate	18	26	44	15	26	41	17	25	42	17	31	48	13	28	41
Statistician	18	12	30	18	12	30	24	19	43	22	16	38	24	19	43
Accountant & Auditor	39	34	73	45	35	80	42	36	78	42	39	81	40	36	76

Employment data includes both Central & Local governments

¹ includes those on acting appointment

Table 5.5a ctd/... - Employment in Government Services¹ by occupation & sex, Island of Mauritius, 2010 - 2014

Occupation	2010			2011			2012			2013			2014		
	Male	Female	Both Sexes	Male	Female	Both Sexes	Male	Female	Both Sexes	Male	Female	Both Sexes	Male	Female	Both Sexes
Technicians & Associate Professionals	7,635	8,834	16,469	7,692	9,392	17,084	7,490	8,741	16,231	7,349	9,481	16,830	7,214	10,086	17,300
<i>of whom as:</i>															
Teacher & Senior Teacher	1,418	2,879	4,297	1,340	3,191	4,531	1,124	2,389	3,513	1,148	3,248	4,396	1,010	2,984	3,994
Nursing Officer, Midwife & Student Nurse	1,311	1,934	3,245	1,327	1,925	3,252	1,336	2,025	3,361	1,213	1,809	3,022	1,191	1,831	3,022
Community Health Worker	36	139	175	41	149	190	31	168	199	37	148	185	40	145	185
Assistant Permanent Secretary	53	63	116	47	62	109	58	75	133	60	78	138	62	76	138
Technical Officer & Technician	133	69	202	121	79	200	116	76	192	123	73	196	103	94	197
Dispenser	297	123	420	302	124	426	151	74	225	151	96	247	193	89	282
Labour Inspector	4	29	33	42	32	74	39	34	73	43	41	84	42	43	85
Clerks	1,486	3,774	5,260	1,421	3,740	5,161	1,263	3,546	4,809	1,169	3,286	4,455	1,540	3,378	4,918
<i>of whom as:</i>															
Clerical Officer & School Clerk	1,268	2,420	3,688	1,226	2,484	3,710	1,114	2,337	3,451	1,100	2,068	3,168	1,239	2,410	3,649
Confidential Secretary & Word Processing Operator	13	1,151	1,164	12	1,125	1,137	15	1,079	1,094	18	1,030	1,048	114	831	945
Telephonist	162	72	234	151	69	220	101	58	159	108	48	156	130	65	195
Service Workers	11,419	835	12,254	11,033	794	11,827	11,488	1,021	12,509	11,810	1,011	12,821	12,557	1,196	13,753
<i>of whom as:</i>															
Police Constable & Sergeant	9,744	704	10,448	9,427	681	10,108	9,814	886	10,700	10,216	867	11,083	10,737	1,024	11,761
Prison Guard/Officer	832	65	897	797	61	858	862	65	927	834	73	907	937	73	1,010
Fireman/Fire Officer	624	-	624	595	-	595	615	5	620	592	5	597	596	5	601
Skilled Agricultural & Fishery Workers	235	-	235	162	-	162	174	-	174	174	-	174	174	-	174
Craft & Related Trade Workers	2,783	23	2,806	2,815	39	2,854	2,350	43	2,393	2,149	22	2,171	2,111	101	2,212
Plant & Machine Operators	1,740	29	1,769	1,746	24	1,770	1,536	20	1,556	1,478	25	1,503	1,657	61	1,718
Elementary Occupations	12,051	2,221	14,272	10,394	2,258	12,652	8,357	1,531	9,888	8,116	1,663	9,779	8,747	1,362	10,109
<i>of whom as:</i>															
Attendant, Hospital Servant & Caretaker	3,921	1,721	5,642	3,864	1,724	5,588	3,104	1,273	4,377	3,002	1,275	4,277	3,019	895	3,914
Labourer, Agricul. Worker & Gardener	4,722	436	5,158	3,920	482	4,402	2,891	230	3,121	3,010	289	3,299	3,529	398	3,927

Employment data includes both Central & Local governments

¹ includes those on acting appointment

Table 5.5b - Employment in Government Services¹ by occupation & sex, Island of Rodrigues, 2010 - 2014

Occupation	2010			2011			2012			2013			2014		
	Male	Female	Both Sexes	Male	Female	Both Sexes	Male	Female	Both Sexes	Male	Female	Both Sexes	Male	Female	Both Sexes
Total Government Services	1,992	610	2,602	1,880	656	2,536	1,744	732	2,476	1,751	749	2,500	1,711	739	2,450
<i>Legislators, senior officials & managers</i>	43	16	59	41	26	67	45	19	64	47	30	77	47	19	66
<i>of whom as:</i>															
Director & Manager	2	1	3	1	-	1	3	-	3	2	-	2	3	-	3
Headteacher & Deputy Headteacher	14	11	25	14	12	26	15	11	26	14	12	26	16	11	27
<i>Professionals</i>	94	13	107	86	12	98	49	48	97	50	50	100	91	18	109
<i>of whom as:</i>															
Medical doctor	9	5	14	6	6	12	11	4	15	7	5	12	8	6	14
Dentist	2	-	2	2	-	2	2	-	2	2	-	2	4	-	4
Scientific Officer	5	-	5	6	-	6	6	-	6	6	-	6	6	-	6
Engineer	2	-	2	1	-	1	1	-	1	1	-	1	1	-	1
<i>Technicians & associate professionals</i>	310	278	588	322	298	620	341	333	674	375	353	728	409	361	770
<i>of whom as:</i>															
Teacher, Senior Teacher	47	65	112	55	79	134	59	88	147	66	96	162	74	112	186
Nursing Officer, Midwife & Student Nurse	77	90	167	78	101	179	82	109	191	84	113	197	81	109	190
Community Health Worker	3	5	8	3	4	7	2	4	6	2	4	6	2	4	6
Technical Officer, Technician	35	8	43	33	7	40	34	7	41	23	6	29	35	7	42
Dispenser	10	4	14	9	3	12	8	4	12	8	4	12	8	4	12
Labour Inspector	1	-	1	1	-	1	1	-	1	1	1	2	-	1	1

¹ includes those on acting appointment

Table 5.5b ctd/... - Employment in Government Services¹ by occupation & sex, Island of Rodrigues, 2010 - 2014

Occupation	2010			2011			2012			2013			2014		
	Male	Female	Both Sexes	Male	Female	Both Sexes	Male	Female	Both Sexes	Male	Female	Both Sexes	Male	Female	Both Sexes
<i>Clerks</i>	56	145	201	57	156	213	55	160	215	54	155	209	53	120	173
<i>of whom as:</i>															
Clerical Officer & School Clerk	37	118	155	37	127	164	35	127	162	33	100	133	33	70	103
Confidential Secretary & Word Processing Operator	2	20	22	2	22	24	2	27	29	2	47	49	2	42	44
Telephonist	4	6	10	4	6	10	4	6	10	4	6	10	4	6	10
<i>Service Workers</i>	91	7	98	88	9	97	85	11	96	87	11	98	159	12	171
<i>of whom as:</i>															
Prison Guard/Officer	29	3	32	27	5	32	26	5	31	26	5	31	26	6	32
Fireman/Fire Officer	53	-	53	51	-	51	50	-	50	52	-	52	52	-	52
<i>Skilled Agricultural & Fishery Workers</i>	45	1	46	29	1	30	23	1	24	24	1	25	16	-	16
<i>Craft & Related Trade Workers</i>	266	9	275	253	7	260	228	6	234	214	6	220	220	12	232
<i>Plant & Machine Operators</i>	183	1	184	176	1	177	168	4	172	146	1	147	153	1	154
<i>Elementary Occupations</i>	904	140	1,044	828	146	974	750	150	900	773	143	916	563	196	759
<i>of whom as:</i>															
Attendant, Hospital Servant, Caretaker	222	106	328	158	93	251	152	93	245	177	117	294	193	124	317
Labourer, Agricul. Worker & Gardener	427	34	461	391	31	422	340	27	367	368	25	393	301	72	373

¹ includes those on acting appointment

Table 5.6 - Number of members at the National Legislative Assembly by year of election & sex, 1987 - 2014

Year	Number of members			% Female
	Male	Female	Both sexes	
1987	66	4	70	5.7
1991	64	2	66	3.0
1995	60	6	66	9.1
2000	66	4	70	5.7
2005	58	12	70	17.1
2010	56	13	69	18.8
2014	62	8	70	11.4

Table 5.6a - Number of members at the Municipal Council by year of election & sex, 1985 - 2015

Year	Number of members			% Female
	Male	Female	Both sexes	
1985	119	7	126	5.6
1988	118	8	126	6.3
1991	119	7	126	5.6
1996	115	11	126	8.7
2001	109	17	126	13.5
2005	110	16	126	12.7
2012	57	33	90	36.7
2015	79	41	120	34.2

Table 5.6b - Number of members at the Village Council by year of election & sex, 1986 - 2012

Year	Number of members			% Female
	Male	Female	Both sexes	
1986	795	15	810	1.9
1989	1,158	18	1,176	1.5
1992	1,378	14	1,392	1.0
1997	1,435	41	1,476	2.8
2005	1,390	86	1,476	5.8
2012	873	297	1,170	25.4

Table 5.6c - Number of members at the Rodrigues Regional Assembly by year of election & sex, 2002, 2006 & 2010

Year	Number of members			% Female
	Male	Female	Both sexes	
2002	15	3	18	16.7
2006	13	5	18	27.8
2010	9	3	12	25.0

Source : Electoral Commissioner's Office



DISABILITY

Table 6.1 - Disabled population and disability prevalence by age and sex, Republic of Mauritius, 2000 & 2011 Population Censuses

Age-group (years)	2000						2011					
	No of disabled persons			Disability prevalence (%)			No of disabled persons			Disability prevalence (%)		
	Male	Female	Both Sexes	Male	Female	Both Sexes	Male	Female	Both Sexes	Male	Female	Both Sexes
Under 10	933	679	1,612	0.9	0.7	0.8	1,186	849	2,035	0.2	0.1	0.2
10 - 19	1,613	1,131	2,744	1.6	1.1	1.3	2,091	1,592	3,683	0.3	0.3	0.3
20 - 29	1,816	1,179	2,995	1.8	1.1	1.5	1,924	1,427	3,351	0.3	0.2	0.3
30 - 39	2,957	1,973	4,930	2.9	2.0	2.4	2,740	1,911	4,651	0.4	0.3	0.4
40 - 49	3,418	2,735	6,153	4.1	3.3	3.7	4,749	3,527	8,276	0.8	0.6	0.7
50 - 59	3,342	3,235	6,577	7.2	6.5	6.8	5,884	5,143	11,027	1.0	0.8	0.9
60 and above	6,497	9,282	15,779	14.0	15.2	14.7	10,413	16,432	26,845	1.7	2.6	2.2
Total	20,576	20,214	40,790	3.5	3.4	3.5	28,987	30,881	59,868	4.7	4.9	4.8

Table 6.1a - Disabled population and disability prevalence by age and sex, Island of Mauritius, 2000 & 2011 Population Censuses

Age-group (years)	2000						2011					
	No of disabled persons			Disability prevalence (%)			No of disabled persons			Disability prevalence (%)		
	Male	Female	Both Sexes	Male	Female	Both Sexes	Male	Female	Both Sexes	Male	Female	Both Sexes
Under 10	878	634	1,512	0.9	0.7	0.8	1,099	779	1,878	0.2	0.1	0.2
10 - 19	1,526	1,054	2,580	1.6	1.1	1.3	1,970	1,504	3,474	0.3	0.2	0.3
20 - 29	1,756	1,123	2,879	1.8	1.1	1.5	1,818	1,350	3,168	0.3	0.2	0.3
30 - 39	2,890	1,911	4,801	2.9	2.0	2.4	2,626	1,824	4,450	0.4	0.3	0.4
40 - 49	3,370	2,694	6,064	4.1	3.3	3.7	4,627	3,407	8,034	0.8	0.6	0.7
50 - 59	3,299	3,175	6,474	7.2	6.5	6.8	5,767	5,025	10,792	1.0	0.8	0.9
60 and above	6,315	9,015	15,330	14.0	15.2	14.7	10,103	15,857	25,960	1.7	2.6	2.2
Total	20,034	19,606	39,640	3.5	3.4	3.5	28,010	29,746	57,756	4.7	4.9	4.8

Table 6.1b - Disabled population and disability prevalence by age and sex, Island of Rodrigues, 2000 & 2011 Population Censuses

Age-group (years)	2000						2011					
	No of disabled persons			Disability prevalence (%)			No of disabled persons			Disability prevalence (%)		
	Male	Female	Both Sexes	Male	Female	Both Sexes	Male	Female	Both Sexes	Male	Female	Both Sexes
Under 10	55	45	100	1.5	1.2	1.4	87	70	157	0.4	0.3	0.4
10 - 19	87	77	164	2.1	1.8	2.0	121	88	209	0.6	0.4	0.5
20 - 29	60	56	116	1.9	1.8	1.8	106	77	183	0.5	0.4	0.5
30 - 39	67	62	129	2.9	2.6	2.7	114	87	201	0.6	0.4	0.5
40 - 49	48	41	89	2.6	2.3	2.5	122	120	242	0.6	0.6	0.6
50 - 59	43	60	103	3.5	5.0	4.2	117	118	235	0.6	0.6	0.6
60 and above	182	267	449	13.7	16.3	15.1	310	575	885	1.6	2.8	2.2
Total	542	608	1,150	3.1	3.4	3.2	977	1,135	2,112	4.9	5.5	5.2

Table 6.2 - Disabled population and disability prevalence by type of disability and sex, Republic of Mauritius, 2000 & 2011 Population Censuses

Type of disability	2000						2011					
	No of disabled persons			Disability prevalence (%)			No of disabled persons			Disability prevalence (%)		
	Male	Female	Both Sexes	Male	Female	Both Sexes	Male	Female	Both Sexes	Male	Female	Both Sexes
Ambulation/manual	6,734	5,508	12,242	1.2	0.9	1.0	13,057	15,196	28,253	2.1	2.4	2.3
Seeing/hearing/speaking	6,112	6,877	12,989	1.0	1.2	1.1	6,920	7,781	14,701	1.1	1.2	1.2
Mental conditions	3,568	2,839	6,407	0.6	0.5	0.5	7,322	6,295	13,617	1.2	1.0	1.1
Other	4,162	4,990	9,152	0.7	0.8	0.8	1,688	1,609	3,297	0.3	0.3	0.3
Total	20,576	20,214	40,790	3.5	3.4	3.5	28,987	30,881	59,868	4.7	4.9	4.8

Table 6.2a - Disabled population and disability prevalence by type of disability and sex, Island of Mauritius, 2000 & 2011 Population Censuses

Type of disability	2000						2011					
	No of disabled persons			Disability prevalence (%)			No of disabled persons			Disability prevalence (%)		
	Male	Female	Both Sexes	Male	Female	Both Sexes	Male	Female	Both Sexes	Male	Female	Both Sexes
Ambulation/manual	6,521	5,266	11,787	1.2	0.9	1.0	12,615	14,638	27,253	2.1	2.4	2.3
Seeing/hearing/speaking	5,940	6,699	12,639	1.0	1.2	1.1	6,688	7,518	14,206	1.1	1.2	1.2
Mental conditions	3,479	2,762	6,241	0.6	0.5	0.5	7,092	6,047	13,139	1.2	1.0	1.1
Other	4,094	4,879	8,973	0.7	0.8	0.8	1,615	1,543	3,158	0.3	0.3	0.3
Total	20,034	19,606	39,640	3.5	3.4	3.5	28,010	29,746	57,756	4.7	4.9	4.8

Table 6.2b - Disabled population and disability prevalence by type of disability and sex, Island of Rodrigues, 2000 & 2011 Population Censuses

Type of disability	2000						2011					
	No of disabled persons			Disability prevalence (%)			No of disabled persons			Disability prevalence (%)		
	Male	Female	Both Sexes	Male	Female	Both Sexes	Male	Female	Both Sexes	Male	Female	Both Sexes
Ambulation/manual	213	242	455	1.2	1.3	1.3	442	558	1,000	2.2	2.7	2.5
Seeing/hearing speaking	172	178	350	1.0	1.0	1.0	332	263	595	1.7	1.3	1.5
Mental conditions	89	77	166	0.5	0.4	0.5	230	248	478	1.2	1.2	1.2
Other	68	111	179	0.4	0.6	0.5	73	66	139	0.4	0.3	0.3
Total	542	608	1,150	3.1	3.4	3.2	1,077	1,135	2,212	5.4	5.5	5.5



SOCIAL BENEFITS

Table 7.1 - Population receiving Social Security benefits by sex and type , Republic of Mauritius, 2010 - 2014¹

	2010			2011			2012			2013			2014		
	Male	Female	Both sexes	Male	Female	Both sexes	Male	Female	Both sexes	Male	Female	Both sexes	Male	Female	Both sexes
Basic Retirement Pension^{2/}	66,481	87,389	153,870	69,914	91,305	161,219	74,114	95,733	169,847	77,789	99,932	177,721	80,947	103,540	184,487
<i>of whom:</i>															
<i>severely disabled^{3/}</i>	5,820	11,061	16,881	5,595	10,932	16,527	5,661	11,002	16,663	5,712	11,098	16,810	5,796	11,016	16,812
<i>90 years and above</i>	633	1,845	2,478	686	2,085	2,771	757	2,205	2,962	833	2,275	3,108	919	2,413	3,332
Basic Widow's Pension	--	21,815	21,815	--	21,503	21,503	--	21,000	21,000	--	20,511	20,511	--	20,302	20,302
Basic Invalid's Pension	13,888	13,791	27,679	13,522	13,406	26,928	13,824	13,537	27,361	15,710	15,220	30,930	15,626	15,089	30,715
(aged 15-59 years)															
<i>of whom:</i>															
<i>severely disabled^{4/}</i>	3,973	3,401	7,374	3,594	3,075	6,669	3,631	3,056	6,687	3,590	2,997	6,587	3,553	2,932	6,485
Cases of Social Aid^{5/}	19,432	20,191	20,447	20,570	21,246

^{1/} As from 2010, data are calculated as at 31st December instead of 30th June as in previous years

^{2/} Population aged 60 years and above

^{3/} Drawing the Enhanced Basic Retirement Pension

^{4/} Drawing Additional Basic Invalid's Pension (Carer's Allowance)

^{5/} Refers to number of heads of families who benefit from Social Aid for themselves and for members of their family.

Table 7.1(a) - Population receiving Social Security benefits by sex and type, Island of Mauritius, 2010 - 2014¹

	2010			2011			2012			2013			2014		
	Male	Female	Both sexes	Male	Female	Both sexes	Male	Female	Both sexes	Male	Female	Both sexes	Male	Female	Both sexes
Basic Retirement Pension^{2/}	64,695	85,213	149,908	68,071	89,073	157,144	72,232	93,452	165,684	75,858	97,604	173,462	78,972	101,164	180,136
<i>of whom:</i>															
<i>severely disabled^{3/}</i>	5,626	10,604	16,230	5,394	10,423	15,817	5,468	10,523	15,991	5,536	10,662	16,198	5,608	10,550	16,158
<i>90 years and above</i>	608	1,783	2,391	664	2,020	2,684	736	2,138	2,874	814	2,212	3,026	901	2,348	3,249
Basic Widow's Pension	--	21,380	21,380	--	21,086	21,086	--	20,572	20,572	--	20,088	20,088	--	19,878	19,878
Basic Invalid's Pension	13,515	13,303	26,818	13,184	12,974	26,158	15,103	14,706	29,809	15,389	14,861	30,250	15,267	14,713	29,980
(aged 15-59 years)															
<i>of whom:</i>															
<i>severely disabled^{4/}</i>	3,852	3,267	7,119	3,489	2,959	6,448	3,505	2,919	6,424	3,466	2,855	6,321	3,389	2,774	6,163
Cases of Social Aid^{5/}	17,239	17,702	17,622	17,728	18,175

^{1/} As from 2010, data are calculated as at 31st December instead of 30th June as in previous years

^{2/} Population aged 60 years and above

^{3/} Drawing the Enhanced Basic Retirement Pension

^{4/} Drawing Additional Basic Invalid's Pension (Carer's Allowance)

^{5/} Refers to number of heads of families who benefit from Social Aid for themselves and for members of their family.

Table 7.1(b) - Population receiving Social Security benefits by sex and type , Island of Rodrigues, 2010 - 2014 ¹

	2010			2011			2012			2013			2014		
	Male	Female	Both Sexes	Male	Female	Both Sexes	Male	Female	Both Sexes	Male	Female	Both Sexes	Male	Female	Both Sexes
Basic Retirement Pension^{2/}	1,786	2,176	3,962	1,843	2,232	4,075	1,882	2,281	4,163	1,931	2,328	4,259	1,975	2,376	4,351
<i>of whom:</i>															
<i>severely disabled^{3/}</i>	<i>194</i>	<i>457</i>	<i>651</i>	<i>201</i>	<i>509</i>	<i>710</i>	<i>193</i>	<i>479</i>	<i>672</i>	<i>176</i>	<i>436</i>	<i>612</i>	<i>188</i>	<i>476</i>	<i>664</i>
<i>90 years and above</i>	<i>25</i>	<i>62</i>	<i>87</i>	<i>22</i>	<i>65</i>	<i>87</i>	<i>21</i>	<i>67</i>	<i>88</i>	<i>19</i>	<i>63</i>	<i>82</i>	<i>18</i>	<i>65</i>	<i>83</i>
Basic Widow's Pension	--	435	435	--	417	417	--	428	428	--	423	423	--	424	424
Basic Invalid's Pension	373	488	861	338	432	770	343	412	755	321	359	680	359	376	735
(aged 15-59 years)															
<i>of whom:</i>															
<i>severely disabled^{4/}</i>	<i>121</i>	<i>134</i>	<i>255</i>	<i>105</i>	<i>116</i>	<i>221</i>	<i>126</i>	<i>137</i>	<i>263</i>	<i>124</i>	<i>142</i>	<i>266</i>	<i>164</i>	<i>158</i>	<i>322</i>
Cases of Social Aid^{5/}	2,193	2,489	2,825	2,842	3,071

^{1/} As from 2010, data are calculated as at 31st December instead of 30th June as in previous years

^{2/} Population aged 60 years and above

^{3/} Drawing the Enhanced Basic Retirement Pension

^{4/} Drawing Additional Basic Invalid's Pension (Carer's Allowance)

^{5/} Refers to number of heads of families who benefit from Social Aid for themselves and for members of their family



*DATA COLLECTED
BY THE
MGECDFW*

Table 8.1 - Number of reported cases registered at the Family Support Bureau (FSB)¹ by nature of problem & sex, Island of Mauritius, 2003 - 2007

	2003			2004			2005			2006			2007		
	Male	Female	Both Sexes	Male	Female	Both Sexes	Male	Female	Both Sexes	Male	Female	Both Sexes	Male	Female	Both Sexes
Total registered²	4,418	10,848	15,266	4,287	10,555	14,842	5,302	11,860	17,162	5,022	11,468	16,490	5,486	11,880	17,366
<i>of which are :</i>															
Follow up cases²	1,817	4,337	6,154	2,325	4,949	7,274	3,289	6,568	9,857	3,038	6,561	9,599	3,588	7,261	10,849
New cases²	2,601	6,511	9,112	1,962	5,606	7,568	2,013	5,292	7,305	1,984	4,907	6,891	1,898	4,619	6,517
<i>of which due to³ :</i>															
Accommodation	46	72	118	7	19	26	1	27	28	1	26	27	6	14	20
Alcoholism/ drug addiction	82	1,549	1,631	27	716	743	47	532	579	21	409	430	47	314	361
Alimony	24	146	170	27	109	136	27	73	100	-	32	32	5	37	42
Conflict with inlaws	40	354	394	50	235	285	43	239	282	38	264	302	61	282	343
Conflict with partner	434	2,114	2,548	343	1,773	2,116	319	1,562	1,881	298	1,622	1,920
Damage	9	300	309	8	50	58	7	25	32	3	31	34	5	27	32
Divorce	52	282	334	36	154	190	58	155	213	38	154	192	36	134	170
Domestic violence	106	1,541	1,647	143	1,579	1,722	54	982	1,036	65	976	1,041	113	1,336	1,449
Extramarital affairs	69	615	684	65	395	460	65	300	365	69	287	356	65	259	324
Family dispute	19	101	120	22	64	86	10	31	41	17	25	42	16	53	69
Financial	45	414	459	45	237	282	39	249	288	10	156	166	12	92	104

¹In September 1997, the Family Counselling Service (FCS) was renamed the Domestic Violence Intervention Unit (DVIU). It later on (August 2003) merged with other services (as the Child Dev. Unit) & was known as the Integrated Services Centre (ISC). As from June 2004 it was renamed the Family Support Bureau (FSB).

²Also includes child cases as from **August 2003** as all services (FCS, CDU & DVIU) were integrated to a single service (ISC now FSB). However, cases by 'nature of problem'³ refer to **adult cases only**.

Table 8.1(ct'd) - Number of reported cases registered at the Family Support Bureau by nature of problem & sex, Island of Mauritius, 2003 - 2007

New cases of which due to:	2003			2004			2005			2006			2007		
	Male	Female	Both Sexes	Male	Female	Both Sexes	Male	Female	Both Sexes	Male	Female	Both Sexes	Male	Female	Both Sexes
Harassment	53	894	947	60	661	721	67	436	503	25	345	370	67	734	801
Illtreatment	53	891	944	61	645	706	62	420	482	28	315	343	97	182	279
Legal problems	24	77	101	47	235	282	35	157	192	56	195	251	61	282	343
Physical assault	66	1,140	1,206	99	1,116	1,215	61	765	826	39	519	558	28	452	480
Property	22	271	293	16	86	102	21	133	154	19	134	153	26	109	135
Psychological	118	231	349	89	212	301	97	164	261	40	183	223	78	163	241
Sexual abuse	30	314	344	13	144	157	14	65	79	1	47	48	3	60	63
Sexual harassment	7	90	97	3	34	37	5	33	38	-	8	8	1	8	9
Threatening assault	39	1,319	1,358	21	319	340	32	376	408	21	224	245	15	85	100
Threatening behaviour	25	975	1,000	15	328	343	17	243	260	2	47	49	13	50	63
Verbal abuse	65	1,212	1,277	66	806	872	49	528	577	29	438	467	18	150	168

- 70 -

Table 8.1a - Number of Orders issued by type and year, Island of Mauritius, 2002 - 2014

Type of Order issued	2002	2003	2004	2005	2006	2007	2008	2009	2010	2011	2012	2013	2014
Protection Order	727	715	472	433	366	243	279	260	326	310	280	252	375
Occupation Order	1	6	12	15	6	1	6	12	5	9	5	2	6

Table 8.1b- Number of reported cases registered at the Family Support Bureau (FSB) by nature of problem & sex, Island of Mauritius, 2008 - 2011

	2008			2009			2010			2011		
	Male	Female	Both Sexes	Male	Female	Both Sexes	Male	Female	Both Sexes	Male	Female	Both Sexes
Total no of cases registered	5,190	11,553	16,743	6,509	14,126	20,635	7,076	15,261	22,337	2,599	7,882	10,481
of which are:												
Follow up cases	3,289	6,993	10,282	4,281	8,789	13,070	4,695	9,631	14,326	1,947	4,761	6,708
New cases	1,901	4,560	6,461	2,228	5,337	7,565	2,381	5,630	8,011	652	3,121	3,773
New adult cases	680	2,861	3,541	780	3,282	4,062	860	3,592	4,452	652	3,121	3,773
of which due to :												
<u>Marital</u>												
Abandonment	37	71	108	32	48	80	32	45	77	6	18	24
Alcoholism	37	294	331	35	426	461	50	414	464	55	370	425
Accommodation	2	29	31	1	44	45	4	35	39	3	13	16
Drug addiction	3	28	31	7	42	49	6	40	46	3	36	39
Extra marital affairs	45	294	339	68	320	388	72	322	394	59	302	361
Financial	29	166	195	30	253	283	29	217	246	11	170	181
Interference of in Laws	36	244	280	54	266	320	44	249	293	44	231	275
Conflict with partner	281	1,384	1,665	397	1,568	1,965	343	1,794	2,137	342	1,717	2,059
Other	18	47	65	1	8	9	51	199	250	61	356	417
Subtotal	488	2,557	3,045	625	2,975	3,600	631	3,315	3,946	584	3,213	3,797
<u>Domestic Violence</u>												
Damage to property	6	31	37	12	52	64	12	40	52	6	21	27
Physical assault by spouse/partner	45	727	772	65	745	810	47	653	700	58	609	667
Physical assault by others living under the same roof	48	140	188	18	103	121	44	94	138	13	97	110
Psychological	72	138	210	67	170	237	48	125	173	8	23	31
Sexual (rape, sodomy, sexual harassment)	11	85	96	3	38	41	4	16	20	-	8	8
Verbal assault by spouse (illtreatment, harassment, abuse, humiliation)	79	690	769	130	815	945	79	685	764	46	292	338
Verbal assault by others living under the same roof	25	118	143	26	83	109	26	120	146	5	39	44
Other	1	30	31	4	21	25	3	219	222	59	533	592
Subtotal	287	1,959	2,246	325	2,027	2,352	263	1,952	2,215	195	1,622	1,817

Table 8.1b (ct'd) - Number of reported cases registered at the Family Support Bureau by nature of problem & sex, Island of Mauritius, 2008 - 2011

<u>Legal</u>	2008			2009			2010			2011		
	Male	Female	Both Sexes	Male	Female	Both Sexes	Male	Female	Both Sexes	Male	Female	Both Sexes
Alimony	26	83	109	9	76	85	4	60	64	-	30	30
Breach of promise of marriage	-	12	12	-	3	3	24	50	74	-	14	14
Custody of child, droit de visite /d'hebergement)	157	249	406	116	145	261	156	221	377	17	50	67
Conflict with neighbour	9	23	32	11	27	38	4	43	47	9	33	42
Divorce	26	119	145	40	150	190	39	119	158	23	92	115
Eviction	5	19	24	1	6	7	7	14	21	6	34	40
Immediate care and control	6	7	13	3	12	15	10	19	29	-	4	4
Property	36	129	165	45	133	178	42	169	211	34	133	167
Other	13	36	49	20	61	81	55	182	237	77	316	393
Subtotal	278	677	955	245	613	858	341	877	1,218	166	706	872
<u>Other</u>												
Empty shell marriage	4	9	13	9	13	22	5	6	11	-	-	-
Sexual harassment	3	24	27	2	10	12	3	15	18	-	3	3
Sodomy	7	4	11	5	6	11	6	2	8	-	3	3
Separation	9	26	35	12	44	56	6	33	39	-	-	-
Conflict with children	59	162	221	85	159	244	65	168	233	44	164	208
Conflict with parent	32	110	142	71	89	160	35	123	158	34	128	162
Family dispute	10	29	39	20	45	65	14	47	61	11	35	46
Gambling	-	8	8	7	26	33	8	46	54	3	16	19
Psychological /emotional	75	183	258	90	190	280	192	303	495	39	164	203
Suicidal tendencies	9	14	23	10	21	31	5	24	29	3	5	8
Psychiatric	-	4	4	-	1	1	-	2	2	1	6	7
Other	4	20	24	9	14	23	116	188	304	21	92	113
Subtotal	212	593	805	320	618	938	455	957	1,412	156	616	772

Table 8.1c - Number of cases registered at the Family Support Bureau (FSB), Island of Mauritius, 2013

	New cases			Old cases			Total		
	Male	Female	Total	Male	Female	Total	Male	Female	Total
Total	672	3,265	3,937	209	995	1,204	881	4,260	5,141

Table 8.1d - Number of cases of Domestic Violence by sex, Island of Mauritius, 2013

	New cases			Old cases			Total		
	Male	Female	Total	Male	Female	Total	Male	Female	Total
Total	176	1,610	1,786	67	585	652	243	2,195	2,438

Table 8.1e - Number of cases (New and Old) and types of Domestic Violence by sex, Island of Mauritius, 2013

Type of problem	New cases			Old cases			Total		
	Male	Female	Total	Male	Female	Total	Male	Female	Total
Damage to property	8	41	49	-	9	9	8	50	58
Emotional abuse (by spouse)	2	18	20	-	4	4	2	22	24
Harassment by spouse	17	286	303	9	118	127	26	404	430
Illtreatment by spouse	19	194	213	5	64	69	24	258	282
Illtreatment by others	26	98	124	7	34	41	33	132	165
Physical assault by spouse/partner	40	704	744	2	267	269	42	971	1,013
Physical assault by others living under the same roof	29	156	185	10	30	40	39	186	225
Psychological violence	3	59	62	1	4	5	4	63	67
Rape	1	7	8	-	1	1	1	8	9
Sexual abuse by spouse	-	7	7	1	2	3	1	9	10
Sexual harassment by spouse	-	5	5	-	-	-	-	5	5
Sodomy (marital)	1	8	9	-	7	7	1	15	16
Threatening assault by spouse	28	349	377	9	150	159	37	499	536
Threatening assault by others	22	67	89	7	21	28	29	88	117
Verbal assault by spouse (harassment, abuse, humiliation)	36	479	515	17	139	156	53	618	671
Verbal assault by others living under the same roof	32	137	169	4	19	23	36	156	192
Other, specify	2	8	10	-	-	-	2	8	10

Table 8.1c (ct'd) - Number of cases registered at the Family Support Bureau (FSB), Island of Mauritius, 2014

	New cases			Old cases			Total		
	Male	Female	Total	Male	Female	Total	Male	Female	Total
Total	727	3,154	3,881	194	875	1,069	921	4,029	4,950

Table 8.1d (ct'd) - Number of cases of Domestic Violence by sex, Island of Mauritius, 2014

	New cases			Old cases			Total		
	Male	Female	Total	Male	Female	Total	Male	Female	Total
Total	174	1,506	1,680	67	554	621	241	2,060	2,301

Table 8.1e(ct'd) - Number of cases (New and Old) and types of Domestic Violence by sex, Island of Mauritius, 2014

Type of problem	New cases			Old cases			Total		
	Male	Female	Total	Male	Female	Total	Male	Female	Total
Damage to property	4	38	42	-	12	12	4	50	54
Emotional abuse (by spouse)	3	15	18	1	2	3	4	17	21
Harassment by spouse	38	312	350	11	130	141	49	442	491
Illtreatment by spouse	17	141	158	9	45	54	26	186	212
Illtreatment by others	18	75	93	6	18	24	24	93	117
Physical assault by spouse/partner	57	786	843	21	263	284	78	1,049	1,127
Physical assault by others living under the same roof	27	143	170	10	42	52	37	185	222
Psychological violence	1	12	13	2	3	5	3	15	18
Rape	1	2	3	-	6	6	1	8	9
Sexual abuse by spouse	2	6	8	1	4	5	3	10	13
Sexual harassment by spouse	-	1	1	-	1	1	-	2	2
Sodomy (marital)	1	19	20	1	9	10	2	28	30
Threatening assault by spouse	18	269	287	8	103	111	26	372	398
Threatening assault by others	17	60	77	8	22	30	25	82	107
Verbal assault by spouse (harassment, abuse, humiliation)	44	389	433	13	158	171	57	547	604
Verbal assault by others living under the same roof	16	53	69	3	15	18	19	68	87
Other, specify	2	10	12	-	1	1	2	11	13

Table 8.1f (ct'd) - Number of cases by type of main problems and sex, Island of Mauritius, 2013

Type of problem	New cases			Old cases			Total		
	Male	Female	Total	Male	Female	Total	Male	Female	Total
Abandonment (Family)	5	10	15	2	1	3	7	11	18
Accommodation	2	15	17	-	1	1	2	16	18
Alcoholism	23	220	243	17	102	119	40	322	362
Alimony	1	22	23	-	8	8	1	30	31
Conflict with in Laws	14	22	36	-	2	2	14	24	38
Conflict with children	50	158	208	16	57	73	66	215	281
Conflict with in laws	26	167	193	9	46	55	35	213	248
Conflict with neighbour	7	30	37	1	6	7	8	36	44
Conflict with parent	27	58	85	5	9	14	32	67	99
Conflict with parents	10	13	23	-	6	6	10	19	29
Conflict with partner	226	986	1,212	75	395	470	301	1,381	1,682
Custody of child, droit de visite/d'hebergement	9	13	22	4	6	10	13	19	32
Divorce	12	35	47	7	15	22	19	50	69
Drug addiction	2	6	8	-	2	2	2	8	10
Emotional abuse by others	-	-	-	-	-	-	-	-	-
Emotional abuse by spouse	-	-	-	-	1	1	-	1	1
Emotional blackmailing	-	-	-	-	-	-	-	-	-
Empty Shell Marriage	1	-	1	1	1	2	2	1	3
Eviction	5	15	20	-	2	2	5	17	22
Extra marital affairs	21	95	116	2	27	29	23	122	145
Family dispute	2	2	4	1	1	2	3	3	6
Financial	3	24	27	2	11	13	5	35	40
Gambling	-	6	6	-	-	-	-	6	6
Harassment by others	10	25	35	-	6	6	10	31	41
Immediate care and control	-	-	-	-	2	2	-	2	2
Legal rights	33	140	173	10	34	44	43	174	217
No place of abode	-	3	3	-	-	-	-	3	3
Problem at workplace	2	6	8	-	1	1	2	7	9
Property	14	50	64	2	12	14	16	62	78
Prosecution	-	2	2	-	-	-	-	2	2
Psychiatric	4	14	18	1	5	6	5	19	24
Psychological	37	125	162	2	27	29	39	152	191
Rape by others	1	10	11	-	-	-	1	10	11
Separation	3	14	17	-	3	3	3	17	20
Sexual abuse by others	1	1	2	-	-	-	1	1	2
Sexual harassment by others	-	2	2	-	-	-	-	2	2
Sodomy by others	-	-	-	-	-	-	-	-	-
Suicidal tendencies others	-	2	2	-	-	-	-	2	2
Suicidal tendencies by spouse	-	4	4	-	-	-	-	4	4
Other	10	8	18	2	4	6	12	12	24

Table 8.1f (ct'd) - Number of cases by type of main problems and sex, Island of Mauritius, 2014

Type of problem	New cases			Old cases			Total		
	Male	Female	Total	Male	Female	Total	Male	Female	Total
Abandonment (Family)	8	10	18	-	2	2	8	12	20
Accommodation	1	5	6	2	8	10	3	13	16
Alcoholism	17	194	211	7	88	95	24	282	306
Alimony	2	22	24	4	8	12	6	30	36
Conflict with in Laws	19	60	79	3	18	21	22	78	100
Conflict with children	36	108	144	21	28	49	57	136	193
Conflict with in laws	26	151	177	2	38	40	28	189	217
Conflict with neighbour	8	36	44	-	9	9	8	45	53
Conflict with parent	25	66	91	4	7	11	29	73	102
Conflict with parents	10	33	43	2	3	5	12	36	48
Conflict with partner	257	907	1,164	77	268	345	334	1,175	1,509
Custody of child, droit de visite/d'hebergement	9	19	28	1	10	11	10	29	39
Divorce	13	55	68	6	22	28	19	77	96
Drug addiction	4	9	13	-	3	3	4	12	16
Emotional abuse by others	-	1	1	-	-	-	-	1	1
Emotional abuse by spouse	-	-	-	-	-	-	-	-	-
Emotional blackmailing	-	-	-	-	-	-	-	-	-
Empty Shell Marriage	1	3	4	-	1	1	1	4	5
Eviction	1	18	19	-	5	5	1	23	24
Extra marital affairs	29	121	150	3	19	22	32	140	172
Family dispute	14	45	59	-	2	2	14	47	61
Financial	5	32	37	2	13	15	7	45	52
Gambling	1	4	5	-	-	-	1	4	5
Harassment by others	8	33	41	1	4	5	9	37	46
Immediate care and control	-	-	-	-	-	-	-	-	-
Legal rights	44	163	207	2	41	43	46	204	250
No place of abode	2	5	7	-	-	-	2	5	7
Problem at workplace	3	8	11	-	1	1	3	9	12
Property	16	53	69	3	17	20	19	70	89
Prosecution	-	2	2	-	-	-	-	2	2
Psychiatric	6	10	16	-	2	2	6	12	18
Psychological	43	109	152	3	19	22	46	128	174
Rape by others	1	10	11	-	-	-	1	10	11
Separation	9	75	84	2	2	4	11	77	88
Sexual abuse by others	3	9	12	-	-	-	3	9	12
Sexual harassment by others	-	1	1	-	-	-	-	1	1
Sodomy by others	-	-	-	-	-	-	-	-	-
Suicidal tendencies others	3	1	4	-	1	1	3	2	5
Suicidal tendencies by spouse	1	1	2	-	-	-	1	1	2
Other	83	191	274	13	71	84	96	262	358

Table 8.1g (ct'd) - Number of cases by type of associated problems and sex, Island of Mauritius, 2013

Type of problem	New cases			Old cases			Total		
	Male	Female	Total	Male	Female	Total	Male	Female	Total
Abandonment (Family)	7	19	26	1	5	6	8	24	32
Accomodation	4	21	25	-	3	3	4	24	28
Alcoholism	31	329	360	10	72	82	41	401	442
Alimony	2	63	65	-	21	21	2	84	86
Conflict with in Laws	21	163	184	4	35	39	25	198	223
Conflict with children	37	11	48	9	37	46	46	48	94
Conflict with in laws	-	14	14	-	4	4	-	18	18
Conflict with neighbour	7	11	18	-	2	2	7	13	20
Conflict with parent	12	34	46	4	8	12	16	42	58
Conflict with parents	5	22	27	-	2	2	5	24	29
Conflict with partner	107	733	840	4	267	271	111	1,000	1,111
Custody of child, droit de visite/d'hebergement	13	70	83	5	20	25	18	90	108
Divorce	15	77	92	7	27	34	22	104	126
Drug addiction	5	23	28	1	6	7	6	29	35
Emotional abuse by others	4	7	11	-	-	-	4	7	11
Emotional abuse by spouse	5	9	14	-	8	8	5	17	22
Emotional blackmailing	-	-	-	-	-	-	-	-	-
Empty Shell Marriage	2	10	12	1	5	6	3	15	18
Eviction	23	75	98	2	14	16	25	89	114
Extra marital affairs	34	319	353	21	88	109	55	407	462
Family dispute	3	35	38	1	15	16	4	50	54
Financial	11	188	199	6	72	78	17	260	277
Gambling	1	27	28	-	3	3	1	30	31
Harassment by others	5	36	41	-	6	6	5	42	47
Immediate care and control	-	5	5	-	2	2	-	7	7
Legal rights	43	161	204	12	37	49	55	198	253
No place of abode	-	4	4	-	-	-	-	4	4
Problem at workplace	2	14	16	-	5	5	2	19	21
Property	23	142	165	8	34	42	31	176	207
Prosecution	-	6	6	-	-	-	-	6	6
Psychiatric	3	12	15	-	3	3	3	15	18
Psychological	27	121	148	4	21	25	31	142	173
Rape by others	2	4	6	-	1	1	2	5	7
Separation	12	126	138	13	32	45	25	158	183
Sexual abuse by others	-	3	3	1	-	1	1	3	4
Sexual harassment by others	-	2	2	-	-	-	-	2	2
Sodomy by others	-	1	1	-	-	-	-	1	1
Suicidal tendencies others	-	7	7	-	-	-	-	7	7
Suicidal tendencies by spouse	-	11	11	1	-	1	1	11	12
Other	-	28	28	3	8	11	3	36	39

Table 8.1g (ct'd) - Number of cases by type of associated problems and sex, Island of Mauritius, 2014

Type of problem	New cases			Old cases			Total		
	Male	Female	Total	Male	Female	Total	Male	Female	Total
Abandonment (Family)	6	7	13	-	-	-	6	7	13
Accommodation	1	7	8	2	1	3	3	8	11
Alcoholism	30	194	224	6	64	70	36	258	294
Alimony	3	38	41	1	19	20	4	57	61
Conflict with in Laws	14	48	62	3	15	18	17	63	80
Conflict with children	19	63	82	6	20	26	25	83	108
Conflict with in laws	16	88	104	2	15	17	18	103	121
Conflict with neighbour	1	11	12	-	3	3	1	14	15
Conflict with parent	9	38	47	1	5	6	10	43	53
Conflict with parents	6	29	35	-	1	1	6	30	36
Conflict with partner	107	608	715	34	186	220	141	794	935
Custody of child, droit de visite/d/hebergement	13	32	45	4	18	22	17	50	67
Divorce	20	65	85	12	22	34	32	87	119
Drug addiction	5	27	32	2	16	18	7	43	50
Emotional abuse by others	-	12	12	-	2	2	-	14	14
Emotional abuse by spouse	1	3	4	-	1	1	1	4	5
Emotional blackmailing	-	1	1	-	-	-	-	1	1
Empty Shell Marriage	1	10	11	-	1	1	1	11	12
Eviction	6	56	62	3	17	20	9	73	82
Extra marital affairs	30	211	241	9	53	62	39	264	303
Family dispute	-	3	3	-	-	-	-	3	3
Financial	5	104	109	3	43	46	8	147	155
Gambling	1	17	18	1	5	6	2	22	24
Harassment by others	8	38	46	1	2	3	9	40	49
Immediate care and control	-	-	-	-	-	-	-	-	-
Legal rights	47	173	220	10	52	62	57	225	282
No place of abode	-	8	8	-	-	-	-	8	8
Problem at workplace	1	7	8	-	1	1	1	8	9
Property	25	95	120	6	36	42	31	131	162
Prosecution	-	3	3	-	1	1	-	4	4
Psychiatric	-	10	10	-	2	2	-	12	12
Psychological	16	78	94	2	15	17	18	93	111
Rape by others	1	6	7	-	-	-	1	6	7
Separation	27	78	105	8	34	42	35	112	147
Sexual abuse by others	-	6	6	-	-	-	-	6	6
Sexual harassment by others	1	3	4	-	-	-	1	3	4
Sodomy by others	-	2	2	-	-	-	-	2	2
Suicidal tendencies others	2	7	9	-	1	1	2	8	10
Suicidal tendencies by spouse	1	6	7	-	1	1	1	7	8
Other	19	42	61	-	5	5	19	47	66

Table 8.2 - Number of child cases reported at the Child Development Unit/Family Support Bureau by nature of problem and sex, Island of Mauritius, 2003 - 2007

	2003			2004			2005			2006			2007		
	Male	Female	Both Sexes	Male	Female	Both Sexes	Male	Female	Both Sexes	Male	Female	Both Sexes	Male	Female	Both Sexes
Total registered	1,532	1,767	3,299	1,430	1,906	3,336	1,573	1,788	3,361	1,673	2,218	3,891	1,548	1,975	3,523
of which due to :															
Abandoned child	30	20	50	26	33	59	49	36	85	40	42	82	51	47	98
Child behavioural problem	298	317	615	279	288	567	285	310	595	314	364	678	333	322	655
Child not attending school	88	71	159	65	56	121	96	64	160	60	45	105	44	29	73
Child prostitution	-	4	4	-	4	4	-	2	2	-	3	3	-	5	5
Child with psychological problem	273	315	588	186	220	406	221	224	445	205	261	466	165	217	382
Custody of child	168	190	358	153	148	301	122	144	266	198	210	408	182	224	406
Immediate care and control	12	5	17	18	14	32	28	17	45	21	19	40	18	22	40
Incest	2	35	37	1	8	9	4	21	25	8	47	55	6	19	25
Neglected child	122	120	242	151	151	302	201	181	382	142	158	300	174	173	347
Physical abuse by parents	118	110	228	62	93	155	98	84	182	122	137	259	110	121	231
Social aid/finance	225	220	445	202	248	450	183	177	360	200	181	381	133	151	284
Teenage pregnancy	- . -	53	53	- . -	112	112	- . -	119	119	- . -	80	80	- . -	47	47
Victim of sexual abuse	17	112	129	24	169	193	27	128	155	31	213	244	31	209	240

Table 8.2a - Number of child cases reported at the Child Development Unit/ Family Support Bureau by nature of problem and sex, Island of Mauritius, 2010 - 2014

Nature of problem	2010			2011			2012			2013			2014		
	Male	Female	Both Sexes	Male	Female	Both Sexes	Male	Female	Both Sexes	Male	Female	Both Sexes	Male	Female	Both Sexes
<u>Abandonment :</u>															
Abandonment by father	17	13	30	34	12	46	15	19	34	19	20	39	9	7	16
Abandonment by mother	52	25	77	37	42	79	29	30	59	46	36	82	21	15	36
Abandonment by both parents	15	19	34	13	19	32	12	9	21	6	9	15	2	9	11
Abandonment by guardian/other	-	-	-	2	3	5	5	9	14	-	1	1	-	-	-
Total abandonment	84	57	141	86	76	162	61	67	128	71	66	137	32	31	63
<u>Physical abuse :</u>															
Physical abuse by mother	60	57	117	54	58	112	59	80	139	66	61	127	53	65	118
Physical abuse by father	76	80	156	99	97	196	64	62	126	66	60	126	77	89	166
Physical abuse by both parents	58	77	135	45	40	85	13	30	43	8	5	13	2	4	6
Physical abuse by step-mother	8	12	20	5	12	17	14	8	22	4	7	11	8	2	10
Physical abuse by step-father	7	10	17	6	13	19	12	11	23	13	13	26	7	5	12
Physical abuse by both step-parents	2	-	2	1	1	2	-	1	1	2	6	8	-	1	1
Physical abuse by teacher	12	6	18	25	6	31	14	15	29	19	13	32	20	4	24
Physical abuse by siblings	1	1	2	1	9	10	6	3	9	8	12	20	3	7	10
Physical abuse by others	81	89	170	94	66	160	80	62	142	170	121	291	168	145	313
Burnt by mother	-	-	-	-	-	-	2	1	3	-	1	1	-	-	-
Burnt by others	4	4	8	4	5	9	5	3	8	8	4	12	2	7	9
Total physical abuse	309	336	645	334	307	641	269	276	545	364	303	667	340	329	669

Table 8.2a (c'td) - Number of child cases reported at the Child Development Unit/ Family Support Bureau by nature of problem and sex, Island of Mauritius, 2010 - 2014

Nature of problem	2010			2011			2012			2013			2014		
	Male	Female	Both Sexes	Male	Female	Both Sexes	Male	Female	Both Sexes	Male	Female	Both Sexes	Male	Female	Both Sexes
<u>Neglect cases:</u>															
Neglect & failure to thrive	413	422	835	397	381	778	292	326	618	320	307	627	372	358	730
Undeclared child	3	5	8	1	5	6	13	9	22	6	10	16	5	7	12
Not attending school	113	103	216	97	61	158	68	74	142	74	69	143	76	74	150
Total neglect cases	529	530	1,059	495	447	942	373	409	782	400	386	786	453	439	892
<u>Worst forms of Labour:</u>															
Mendicity	2	10	12	3	3	6	1	2	3	2	1	3	5	1	6
Child labour	2	1	3	5	4	9	1	1	2	8	1	9	6	2	8
Commercial sexual exploitation (incl.child prostitution)	-	2	2	-	2	2	-	5	5	-	7	7	-	9	9
Total worst forms of Labour	4	13	17	8	9	17	2	8	10	10	9	19	11	12	23
<u>Sexual abuse:</u>															
Sexual intercourse with minor under 16	-	113	113	-	83	83	5	102	107	9	144	153	15	201	216
Attempt upon chastity	7	106	113	10	103	113	24	86	110	21	112	133	28	100	128
Sexual harassment	4	12	16	2	17	19	3	28	31	14	25	39	15	33	48
Sodomy	20	8	28	26	7	33	16	3	19	13	10	23	7	5	12
Bestiality	-	-	-	-	-	-	-	-	-	-	1	1	1	3	4
Rape	-	11	11	-	14	14	-	8	8	-	2	2	-	4	4
<u>Incest:</u>															
Attempt upon chastity	7	22	29	3	26	29	5	19	24	1	11	12	1	6	7
Sexual intercourse with minor under 16	-	3	3	-	8	8	-	6	6	2	18	20	-	12	12
Sodomy	1	2	3	1	1	2	2	1	3	1	4	5	7	-	7
Sexual harassment	-	1	1	-	1	1	1	10	11	1	3	4	-	7	7
Total incest	8	28	36	4	36	40	8	36	44	5	36	41	8	25	33
Total sexual abuse (including incest)	39	278	317	42	260	302	56	263	319	62	330	392	74	371	445

Table 8.2a (c'td)- Number of child cases reported at the Child Development Unit/ Family Support Bureau by nature of problem and sex, Island of Mauritius, 2010 - 2014

Nature of problem	2010			2011			2012			2013			2014		
	Male	Female	Both Sexes	Male	Female	Both Sexes	Male	Female	Both Sexes	Male	Female	Both Sexes	Male	Female	Both Sexes
<u>Psychological / emotional abuse:</u>															
Emotional deprivation	231	307	538	285	305	590	245	271	516	220	304	524	231	264	495
Behavioural problem	372	426	798	468	481	949	392	364	756	418	410	828	451	438	889
Conflict with parents	6	14	20	14	15	29	9	7	16	9	7	16	6	6	12
Threats	2	3	5	2	7	9	11	9	20	8	12	20	15	21	36
Attempt suicide	2	20	22	4	19	23	7	26	33	10	24	34	8	17	25
Total Psychological / emotional abuse:	613	770	1,383	773	827	1,600	664	677	1,341	665	757	1,422	711	746	1,457
<u>Other types of problems:</u>															
Adoption	2	1	3	5	2	7	2	9	11	3	4	7	2	1	3
Death	3	6	9	2	2	4	3	1	4	-	3	3	-	4	4
Transfer of school	14	12	26	16	20	36	13	14	27	16	12	28	8	9	17
Conflict with parents/harassment	23	17	40	16	10	26	32	34	66	19	31	50	12	26	38
Harassment by others	54	72	126	45	60	105	51	63	114	62	102	164	58	111	169
Custody of child	476	522	998	513	484	997	482	513	995	529	525	1,054	515	579	1,094
Bullying	1	-	1	2	2	4	3	6	9	2	-	2	3	1	4
No place of abode	37	37	74	33	27	60	19	25	44	16	23	39	16	15	31
Social aid	150	215	365	159	138	297	102	102	204	87	67	154	77	87	164
Tardy declaration	3	3	6	7	7	14	3	4	7	2	8	10	3	1	4
Teenage pregnancy / mother	-	103	103	-	99	99	-	108	108	-	191	191	-	162	162
Child kidnapping	2	6	8	1	1	2	1	1	2	2	8	10	1	3	4
Substance abuse - drugs	-	2	2	1	-	1	1	1	2	1	-	1	2	1	3
Substance abuse - Alcohol	-	3	3	2	-	2	-	-	-	1	3	4	1	1	2
Substance abuse - glue sniffing	-	-	-	-	-	-	1	-	1	-	-	-	-	-	-
Child trafficking	1	-	1	6	6	12	3	4	7	-	1	1	2	2	4
Alimony	92	101	193	91	114	205	75	70	145	86	76	162	85	109	194
Droit de visite	83	100	183	55	61	116	66	68	134	55	65	120	76	74	150
Legal problem	13	19	32	4	5	9	9	8	17	3	5	8	4	3	7
Child at risk	-	-	-	-	-	-	-	-	-	37	44	81	40	38	78
Immediate care & control	34	32	66	24	15	39	19	18	37	16	9	25	8	6	14
Other problems:	90	130	220	133	149	282	88	94	182	82	65	147	86	122	208
Total other types of problems	1,078	1,381	2,459	1,115	1,202	2,317	973	1,143	2,116	1,019	1,242	2,261	999	1,355	2,354
TOTAL	2,656	3,365	6,021	2,853	3,128	5,981	2,398	2,843	5,241	2,591	3,093	5,684	2,620	3,283	5,903

Table 8.3 - Number of persons following training courses (held by the Home Economics Unit) by course followed and sex, Island of Mauritius, 2009 - 2014

Course followed	2009			2010			2011			2012			2013			2014		
	Male	Female	Both sexes	Male	Female	Both sexes	Male	Female	Both sexes	Male	Female	Both sexes	Male	Female	Both sexes	Male	Female	Both sexes
Floral arrangement	-	582	582	1	516	517	-	444	444	-	425	425	3	454	457	2	511	513
Food processing	-	368	368	-	617	617	-	698	698	-	624	624	1	435	436	2	538	540
Healthy eating/nutrition	-	126	126
Home Economics	-	852	852	1	595	596	-	640	640	1	568	569	5	632	637	1	347	348
Pastry & Dessert	1	644	645	1	433	434	3	553	556	6	447	453	6	599	605	2	436	438
Home Decoration	-	263	263	1	289	290	-	71	71	-	130	130	-	110	110	1	135	136
Curtain Making	-	199	199	-	112	112	-	58	58	-	81	81	-	72	72	-	98	98
Life Skill Development	16	19	35	29	16	45	123	160	283	67	106	173
Motherhood and Childcare	-	111	111	-	321	321	-	156	156	-	172	172	-	279	279
Healthy Lifestyle Programme	3	494	497	1	398	399	4	359	363	2	393	395
Agricultural Club	1	346	347	-	490	490	1	594	595	-	591	591
Evening/Weekend course for men & women	-	52	52	3	7	10
TOTAL	17	2,927	2,944	4	2,799	2,803	36	3,693	3,729	134	3,486	3,620	87	3,533	3,620	10	3,328	3,338

Note: ... course not offered



CHILDREN

Table 9.1 - Child population by age group, sex and urban/rural residence, Republic of Mauritius, 2011 Population Census

Age group (years)	Total				Urban				Rural			
	Male	Female	Both sexes		Male	Female	Both sexes		Male	Female	Both sexes	
			No	%			No	%			No	%
Under 1	6,151	6,156	12,307	1.0	2,172	2,216	4,388	0.4	3,979	3,940	7,919	0.6
1 - 4	30,551	30,220	60,771	4.9	11,048	10,861	21,909	1.8	19,503	19,359	38,862	3.1
5 - 9	44,947	44,068	89,015	7.2	16,177	15,859	32,036	2.6	28,770	28,209	56,979	4.6
10 - 14	47,302	46,337	93,639	7.6	17,523	17,505	35,028	2.8	29,779	28,832	58,611	4.7
15 - 17	29,834	29,625	59,459	4.8	11,509	11,485	22,994	1.9	18,325	18,140	36,465	2.9
< 18	158,785	156,406	315,191	25.5	58,429	57,926	116,355	9.4	100,356	98,480	198,836	16.1
All ages	610,848	625,969	1,236,817		244,688	254,661	499,349		366,160	371,308	737,468	

Table 9.1a - Child population by age group, sex and urban/rural residence, Island of Mauritius, 2011 Population Census

Age group (years)	Total				Urban				Rural			
	Male	Female	Both sexes		Male	Female	Both sexes		Male	Female	Both sexes	
			No	%			No	%			No	%
Under 1	5,827	5,853	11,680	1.0	2,172	2,216	4,388	0.4	3,655	3,637	7,292	0.6
1 - 4	28,973	28,647	57,620	4.8	11,048	10,861	21,909	1.8	17,925	17,786	35,711	3.0
5 - 9	42,832	41,996	84,828	7.1	16,177	15,859	32,036	2.7	26,655	26,137	52,792	4.4
10 - 14	45,370	44,436	89,806	7.5	17,523	17,505	35,028	2.9	27,847	26,931	54,778	4.6
15 - 17	28,738	28,463	57,201	4.8	11,509	11,485	22,994	1.9	17,229	16,978	34,207	2.9
< 18	151,740	149,395	301,135	25.2	58,429	57,926	116,355	9.7	93,311	91,469	184,780	15.4
All ages	590,944	605,439	1,196,383		244,688	254,661	499,349		346,256	350,778	697,034	

Table 9.1b - Child population by age group, sex and urban/rural¹ residence, Island of Rodrigues, 2011 Population Census

Age group (years)	Male	Female	Both sexes	
			No	%
Under 1	324	303	627	1.6
1 - 4	1,578	1,573	3,151	7.8
5 - 9	2,115	2,072	4,187	10.4
10 - 14	1,932	1,901	3,833	9.5
15 - 17	1,096	1,162	2,258	5.6
< 18	7,045	7,011	14,056	34.8
All ages	19,904	20,530	40,434	

¹Island of Rodrigues is totally rural

Table 9.2 - Estimated mid year child population by age group and sex, Republic of Mauritius, 2013 - 2014

Age-group (years)	2013				2014			
	Male	Female	Both sexes		Male	Female	Both sexes	
			Number	%			Number	%
0	7,119	6,734	13,853	1.1	6,852	6,670	13,522	1.1
1 - 4	30,065	29,572	59,637	4.7	29,322	28,495	57,817	4.6
5 - 9	45,240	43,580	88,820	7.1	43,388	42,111	85,499	6.8
10 - 14	49,815	48,143	97,958	7.8	49,594	47,946	97,540	7.7
15 - 17	29,536	29,081	58,617	4.7	29,772	28,909	58,681	4.7
< 18	161,775	157,110	318,885	25.3	158,928	154,131	313,059	24.8
All ages	622,861	635,792	1,258,653	100.0	624,002	636,932	1,260,934	100.0

Table 9.2a - Estimated mid year child population by age group and sex, Island of Mauritius, 2013 - 2014

Age-group (years)	2013				2014			
	Male	Female	Both sexes		Male	Female	Both sexes	
			Number	%			Number	%
0	6,762	6,397	13,159	1.1	6,497	6,327	12,824	1.1
1 - 4	28,614	28,178	56,792	4.7	27,905	27,112	55,017	4.5
5 - 9	43,146	41,477	84,623	7.0	41,331	40,105	81,436	6.7
10 - 14	47,760	46,127	93,887	7.7	47,483	45,875	93,358	7.7
15 - 17	28,478	27,976	56,454	4.6	28,679	27,815	56,494	4.6
< 18	154,760	150,155	304,915	25.0	151,895	147,234	299,129	24.5
All ages	602,493	614,848	1,217,341	100.0	603,473	615,792	1,219,265	100.0

Table 9.2b - Estimated mid year child population by age group and sex, Island of Rodrigues, 2013 - 2014

Age-group (years)	2013				2014			
	Male	Female	Both sexes		Male	Female	Both sexes	
			Number	%			Number	%
0	360	340	700	1.7	360	340	700	1.7
1 - 4	1,450	1,390	2,840	6.9	1,420	1,380	2,800	6.7
5 - 9	2,080	2,100	4,180	10.1	2,060	2,010	4,070	9.8
10 - 14	2,060	2,000	4,060	9.8	2,110	2,070	4,180	10.0
15 - 17	1,070	1,130	2,200	5.3	1,080	1,100	2,180	5.2
< 18	7,020	6,960	13,980	33.8	7,030	6,900	13,930	33.4
All ages	20,370	20,940	41,310	100.0	20,530	21,140	41,670	100.0

Table 9.3 - Children receiving selected Social Security benefits by age-group & sex , Republic of Mauritius, 2010 - 2014 ¹

	2010			2011			2012			2013			2014		
	Male	Female	Both Sexes	Male	Female	Both Sexes	Male	Female	Both Sexes	Male	Female	Both Sexes	Male	Female	Both Sexes
Beneficiaries of Basic Orphan's pension	188	161	349	195	176	371	194	174	368	194	180	374	191	181	372
<i>of whom:</i>															
<i>Under 15 years</i>	108	75	183	108	83	191	101	76	177	107	88	195	101	95	196
<i>(15 - 19) years^{2/}</i>	80	86	166	87	93	180	93	98	191	87	92	179	90	86	176
Beneficiaries of child allowance	9,358	8,874	18,232	9,592	8,998	18,590	9,446	8,809	18,255	9,312	8,710	18,022	8,459	7,852	16,311
<i>of whom:</i>															
children of old-age pensioners	119	108	227	134	111	245	130	114	244	136	132	268	122	133	255
children of widows	3,528	3,417	6,945	3,533	3,490	7,023	3,387	3,300	6,687	3,256	3,145	6,401	2,969	2,840	5,809
children of disabled persons	5,462	5,084	10,546	5,664	5,117	10,781	5,679	5,131	10,810	5,671	5,180	10,851	5,130	4,645	9,775
Other ^{3/}	249	265	514	261	280	541	250	264	514	249	253	502	238	234	472

^{1/} As from 2010, data are calculated as at 31st December instead of 30th June as in previous years

^{2/} In this age group, only orphans attending full-time education receive a pension.

^{3/} These are children whose parents were previously beneficiaries of Basic Retirement Pension or Basic Widow's Pension or Basic Invalid's Pension.

Table 9.3(a) - Children receiving selected Social Security benefits by age-group & sex , Island of Mauritius, 2010 - 2014 ¹

	2010			2011			2012			2013			2014		
	Male	Female	Both Sexes	Male	Female	Both Sexes	Male	Female	Both Sexes	Male	Female	Both Sexes	Male	Female	Both Sexes
Beneficiaries of Basic Orphan's pension	157	147	304	168	156	324	168	154	322	166	161	327	162	164	326
<i>of whom:</i>															
<i>Under 15 years</i>	92	67	159	94	71	165	86	69	155	93	80	173	89	86	175
<i>(15 - 19) years^{2/}</i>	65	80	145	74	85	159	82	85	167	73	81	154	73	78	151
Beneficiaries of child allowance	9,025	8,527	17,552	9,262	8,640	17,902	9,132	8,475	17,607	9,026	8,405	17,431	8,167	7,548	15,715
<i>of whom:</i>															
children of old-age pensioners	113	103	216	126	108	234	124	110	234	130	126	256	115	127	242
children of widows	3,427	3,312	6,739	3,432	3,379	6,811	3,290	3,195	6,485	3,155	3,033	6,188	2,869	2,731	5,600
children of disabled persons	5,248	4,864	10,112	5,455	4,889	10,344	5,484	4,920	10,404	5,505	5,004	10,509	4,960	4,469	9,429
Other ^{3/}	237	248	485	249	264	513	234	250	484	236	242	478	223	221	444

^{1/} As from 2010, data are calculated as at 31st December instead of 30th June as in previous years

^{2/} In this age group, only orphans attending full-time education receive a pension.

^{3/} These are children whose parents were previously beneficiaries of Basic Retirement Pension or Basic Widow's Pension or Basic Invalid's Pension.

Table 9.3(b) - Children receiving selected Social Security benefits by age-group & sex , Island of Rodrigues, 2010 - 2014 ¹

	2010			2011			2012			2013			2014		
	Male	Female	Both Sexes	Male	Female	Both Sexes	Male	Female	Both Sexes	Male	Female	Both Sexes	Male	Female	Both Sexes
Beneficiaries of Basic Orphan's pension	31	14	45	27	20	47	26	20	46	28	19	47	29	17	46
<i>of whom:</i>															
<i>Under 15 years</i>	16	8	24	14	12	26	15	7	22	14	8	22	12	9	21
<i>(15 - 19) years ^{2/}</i>	15	6	21	13	8	21	11	13	24	14	11	25	17	8	25
Beneficiaries of child allowance	333	347	680	330	358	688	314	334	648	286	305	591	292	304	596
<i>of whom:</i>															
children of old-age pensioners	6	5	11	8	3	11	6	4	10	6	6	12	7	6	13
children of widows	101	105	206	101	111	212	97	105	202	101	112	213	100	109	209
children of disabled persons	214	220	434	209	228	437	195	211	406	166	176	342	170	176	346
Other ^{3/}	12	17	29	12	16	28	16	14	30	13	11	24	15	13	28

^{1/} As from 2010, data are calculated as at 31st December instead of 30th June as in previous years

^{2/} In this age group, only orphans attending full-time education receive a pension.

^{3/} These are children whose parents were previously beneficiaries of Basic Retirement Pension or Basic Widow's Pension or Basic Invalid's Pension.

Table 9.4 - Juvenile offences¹, Republic of Mauritius, 2009 - 2014

Year	Number of offences involving juveniles	Number of juveniles involved	Mid-year juvenile population estimates	Juvenile delinquency rate (per 1000 juveniles)
2009	764	765	120,036	6.4
2010	594	648	119,243	5.4
2011	665	701	118,254	5.9
2012	718	799	117,723	6.8
2013	579	652	117,690	5.5
2014	554	686	117,724	5.8

Table 9.4a - Juvenile offences¹, Island of Mauritius, 2009 - 2014

Year	Number of offences involving juveniles	Number of juveniles involved	Mid-year juvenile population estimates	Juvenile delinquency rate (per 1000 juveniles)
2009	716	724	115,501	6.3
2010	582	635	114,751	5.5
2011	661	697	113,810	6.1
2012	698	776	113,185	6.9
2013	563	635	113,117	5.6
2014	540	671	113,052	5.9

Table 9.4b - Juvenile offences¹, Island of Rodrigues, 2009 - 2014

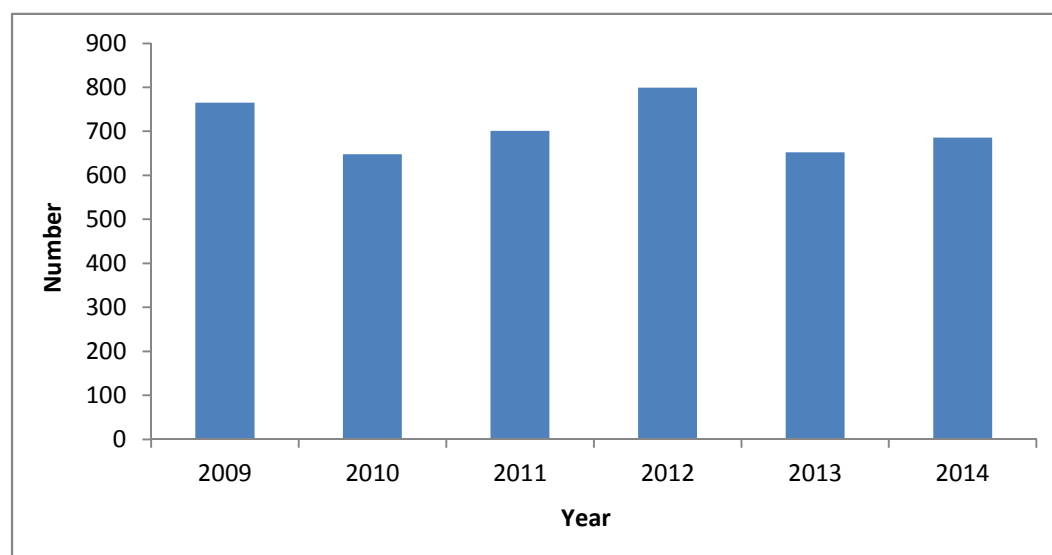
Year	Number of offences involving juveniles	Number of juveniles involved	Mid-year juvenile population estimates	Juvenile delinquency rate (per 1000 juveniles)
2009	48	41	4,535	9.0
2010	12	13	4,492	2.9
2011	4	4	4,444	0.9
2012	20	23	4,538	5.1
2013	16	17	4,573	3.7
2014	14	15	4,672	3.2

¹ excluding contraventions

Table 9.5 - Juveniles involved in offences¹ by type of offence, Republic of Mauritius, 2009 - 2014

Year	Intentional homicide	Assault	Sexual offences	Larceny	Other	TOTAL
2009	3	283	47	199	233	765
2010	3	279	43	160	163	648
2011	2	293	60	134	212	701
2012	5	252	76	248	218	799
2013	6	209	97	168	172	652
2014	2	215	63	178	228	686

Figure 3 - Total number of juveniles involved in offences¹, Republic of Mauritius, 2009 - 2014



¹ excluding contraventions

Table 9.6 - Number of convicted persons below 18 years by type of offence and sex , Republic of Mauritius, 2012 - 2014

Type of offence	2012				2013				2014			
	10 -14 yrs		15 - 17 yrs		10 -14 yrs		15 - 17 yrs		10 -14 yrs		15 - 17 yrs	
	M	F	M	F	M	F	M	F	M	F	M	F
Larceny	-	-	13	-	-	-	-	-	-	-	-	-
Larceny Breaking/ night breaking	-	-	-	-	-	-	2	-	-	-	3	-
Larceny Violence	-	-	-	-	-	-	1	-	-	-	2	-
Larceny two in number/more than two in number	1	-	23	2	2	-	14	-	-	-	15	2
Larceny by persons on receipt of wages	-	-	-	-	-	-	-	-	-	-	-	-
Larceny other	-	-	5	2	-	-	22	1	-	-	-	-
Attempt at larceny	-	-	12	2	-	-	-	-	-	-	3	-
Possession of stolen property	-	1	3	1	-	-	5	-	-	-	-	-
Aiding & abeting wounds & blows	-	-	4	1	-	-	-	-	-	-	2	1
Assault	3	-	11	1	-	-	8	6	-	-	7	-
Attempt upon chastity	-	-	-	-	-	-	6	-	-	-	-	-
Conspiracy	1	-	1	-	-	-	-	-	-	-	-	-
Aiding & abeting	-	-	4	1	-	-	3	-	-	-	-	-
Bearing offensive weapons	-	-	3	-	-	-	1	-	-	-	-	-
Possession of gandia/psychotropic substances	-	-	2	-	-	-	-	-	-	-	1	-
Sodomy	-	-	-	-	-	-	1	-	-	-	-	-
Other	3	-	20		1	-	19	-	-	-	73	3
Total	8	1	101	10	3	-	82	7	-	-	106	6

Source: Police Department

Table 9.7 - Number of persons below 14 years prosecuted by police, by type of offence & sex , Republic of Mauritius, 2012 - 2014

Type of offence	2012				2013				2014			
	5 - 9 yrs		10 - 13 yrs		5 - 9 yrs		10 - 13 yrs		5 - 9 yrs		10 - 13 yrs	
	M	F	M	F	M	F	M	F	M	F	M	F
Larceny	-	-	1	-	1	-	13	-	-	-	2	-
Larceny breaking (Night/Day)	-	-	4	-	-	-	1	-	-	-	1	-
Attempt at larceny	-	-	-	-	-	-	-	-	-	-	2	-
Possession of stolen properties	-	-	-	-	-	-	-	-	-	-	-	-
Aiding and abetting	-	-	-	-	-	-	-	-	-	-	-	-
Damaging enclosure	-	-	-	-	-	-	-	-	-	-	1	-
Child beyond control	-	-	-	-	-	-	-	-	-	-	-	-
Sodomy	-	-	2	-	-	-	-	-	1	-	2	-
Rape	-	-	-	-	-	-	-	-	-	-	-	-
Assault	-	-	4	3	1	-	4	2	-	-	5	4
Larceny being more than 2 in number	-	-	1	-	-	-	2	-	-	-	5	-
Damaging motor vehicle	-	-	-	-	-	-	-	-	-	-	-	-
Arson	-	-	-	-	-	-	-	-	-	-	-	-
Other	-	-	7	1	-	1	6	1	-	-	2	2
Total	-	-	19	4	2	1	26	3	1	-	26	6

Source: Police Department

Table 9.8 - Number of child abuse cases reported to the Police, Island of Mauritius, 2012 - 2014

Type of abuse	2012			2013			2014		
	Male	Female	Both sexes	Male	Female	Both sexes	Male	Female	Both sexes
Physical abuse	52	44	96	54	40	94	36	49	85
Abandonment by mother	-	-	-	-	-	-	2	1	3
Child Illtreatment	3	9	12	3	11	14	11	3	14
Behavioural problem/ Child beyond Control	-	2	2	1	1	2	1	3	4
Sexual intercourse under 16	-	78	78	-	98	98	1	110	111
Attempt upon chastity	9	58	67	18	70	88	7	62	69
Sodomy	11	11	22	7	14	21	9	13	22
Rape/Alledged Rape	-	6	6	-	9	9	-	13	13
Absorbing noxious substances	7	19	26	10	15	25	5	7	12
Burns/Scald	-	-	-	-	1	1	-	-	-
Indecent assault	-	-	-	-	-	-	-	-	-
Absorbing pills	8	6	14	-	-	-	3	4	7
Attempt at suicide	-	2	2	-	3	3	-	2	2
Child abduction	1	7	8	-	5	5	1	6	7
Causing child to be sexually abused	-	-	-	-	-	-	8	90	98
Other	11	66	77	16	88	104	2	14	16
Total	102	308	410	109	355	464	86	377	463

Source: Police Department

Table 9.9 - Number of child victims who have received counselling & assistance in recovery, Island of Mauritius, 2012 - 2014

Type of abuse	2012			2013			2014		
	Male	Female	Both sexes	Male	Female	Both sexes	Male	Female	Both sexes
Physical abuse	2	8	10	2	5	7	8	5	13
Neglect	4	2	6	1	4	5	1	4	5
Abandonment	-	1	1	-	-	-	1	3	4
Illtreatment	-	-	-	-	-	-	-	-	-
Behavioural problem	7	14	21	16	16	32	6	12	18
Sexual intercourse under 16	-	-	-	-	-	-	-	-	-
Mendicity	-	-	-	-	-	-	-	-	-
Not attending school	-	-	-	-	1	1	1	2	3
Absorbing pills	-	-	-	-	-	-	-	-	-
Emotional & psychological abuse	-	2	2	-	1	1	1	1	2
Teenage pregnancy	-	-	-	-	-	-	-	-	-
Child labour	-	-	-	-	-	-	-	-	-
Other	1	5	6	-	3	3	-	4	4
Total	14	32	46	19	30	49	18	31	49

Source: Police Department

Table 9.10 - Number of children with disabilities attending schools, Island of Mauritius, 2011 - 2014

Children with disabilities attending:	2011	2012	2013	2014
Regular schools ¹	475	495	501	522
Special schools	1,853	1,862	2,008	2,291
Day care centres ¹	850	1,012	1,166	1,291

¹ Ministry of Social Security, National Solidarity and Reform Institutions

Table 9.11 - Number of children deprived of family environment and admitted in institutions by age and sex, Island of Mauritius, 2013 - 2014

Age group (years)	2013			2014		
	Male	Female	Both sexes	Male	Female	Both sexes
0 - 5	31	16	47	26	31	57
6 - 10	24	20	44	31	39	70
11 - 15	8	30	38	33	23	56
16 - 20	-	4	4	10	4	14
Total	63	70	133	100	97	197

Table 9.12 - Number of children placed in foster families, Island of Mauritius, 2012 - 2014

Year	Male	Female	Both sexes	Urban	Rural	Total
2012	7	5	12	5	7	12
2013	2	6	8	2	6	8
2014	5	-	5	2	3	5

Table 9.13 - Number of Mauritian children adopted by Foreign Nationals, 2012 - 2014

Year	Male	Female	Both sexes	Urban	Rural	Total
2012	5	10	15	6	9	15
2013	3	5	8	3	5	8
2014	-	-	-	-	-	-

Source: Prime Minister's Office

Table 9.13a - Number of Foreign children adopted by Mauritian Nationals, 2012 - 2014

Year	Male	Female	Both sexes	Urban	Rural	Total
2012	6	2	8	4	4	8
2013	3	-	3	2	1	3
2014	1	2	3	2	1	3

Source: Prime Minister's Office

Table 9.14 - Number of children under 16 years involved in labour, Island of Mauritius, June 11 - May 14

Year	Enterprise visited	Enterprise employing children	Children employed	
			Male	Female
June 11 - May 12	1,109	-	-	-
June 12 - May 13	1,272	2	3	-
June 13 - May 14	1,162	1	3	-

Source: Ministry of Labour, Industrial Relations, Employment and Training

Table 9.15 - Number of children placed in Probation Hostel and Home by region, Republic of Mauritius, 2013 - 2014

Region	2013			2014		
	Male	Female	Both sexes	Male	Female	Both sexes
Urban	-	3	3	1	2	3
Rural	-	1	1	4	3	7
Total	-	4	4	5	5	10

Table 9.15a - Number of children placed in Probation Hostel and Home by type of crime/charge, Republic of Mauritius, 2013 - 2014

Type of crime/charge	2013			2014		
	Male	Female	Both sexes	Male	Female	Both sexes
Larceny	-	-	-	1	-	1
Committed to an institution	-	-	-	-	-	-
Child beyond control	-	4	4	4	5	9
Total	-	4	4	5	5	10

Table 9.15b - Number of children placed in Probation Hostel and home by age and sex, Republic of Mauritius, 2014

Age (years)	Male	Female	Both sexes
< 10	1	-	1
11	-	-	-
12	2	1	3
13	-	-	-
14	2	1	3
15	-	2	2
16	-	1	1
17	-	-	-
Total	5	5	10

Source: Probation and Aftercare Services

Table 9.16 - Health care expenditure (Rs Billion), Republic of Mauritius, 2012 - 2014

	2012	2013	2014
Expenditure on health care	7.90	8.70	9.20
% of GDP	2.60	2.70	2.40

Source: Ministry of Health and Quality of Life

Table 9.17 - Expenditure on programmes and services for children with disabilities (Rs Million), Island of Mauritius, 2012 - 2014

	2012	2013	2014
Transport services only (for parents & free for children)	11.0	14.7	16.8

Table 9.18 - Expenditure on support programmes for families (Rs Million), Island of Mauritius, 2012 - 2014

	2012	2013	2014
Pension under NPF Act			
Basic Orphan Pension (BOP) and Child Allowance	263.8	272.1	280.0
Under Social Aid Act	772.3	582.6	944.5
Refund of examination fees	150.0	143.8	146.1

Source: Ministry of Social Security, National Solidarity and Reform Institutions

Table 9.19 - Expenditure on protection of children who are in need of alternative care including the support of care services (Rs Million), Island of Mauritius, 2013 - 2014

	2013	2014
Charitable institutions: orphanages	4.6	4.8

Table 9.20 - Expenditure on programmes & activities for the prevention of and protection from child abuse, child sexual exploitation & child labour (Rs Million), Island of Mauritius, 2013 - 2014

	2013	2014
Child Development Unit	120.8	122.8
National Children's Council	15.0	18.0
Ministry (Total)	613.2	671.7

Table 9.21 - Expenditure on juvenile justice and the recovery and reintegration of juvenile offenders (Rs Million), Island of Mauritius, 2013 - 2014

	2013	2014
Rehabilitation of Youth Centre	20.2	25.5
Payment of contribution to Probation Hostels for Boys and Girls	2.5	2.5

Source: Ministry of Social Security, National Solidarity and Reform Institutions



MISCELLANEOUS

Table 10.1 - Global Gender Gap Index (GGI) by selected countries, 2013 & 2014

Country	2013		2014	
	Rank	Value	Rank	Value
Iceland	1	0.8731	1	0.8594
Norway	3	0.8417	3	0.8374
France	45	0.7089	16	0.7588
South Africa	17	0.7510	18	0.7527
Canada	20	0.7425	19	0.7464
United States	23	0.7392	20	0.7463
Australia	24	0.7390	24	0.7409
United Kingdom	18	0.7440	26	0.7383
Madagascar	56	0.7016	41	0.7214
Singapore	58	0.7000	59	0.7046
Brazil	62	0.6949	71	0.6941
China	69	0.6908	87	0.6830
Mauritius	98	0.6599	106	0.6541
India	101	0.6551	114	0.6455
Pakistan	135	0.5459	141	0.5522
Yemen	136	0.5128	142	0.5145

Source: The Global Gender Gap Report 2014, World Economic Forum