

REPUBLIC OF MAURITIUS

**STATISTICS
IN
MAURITIUS**

A GENDER APPROACH

**MINISTRY OF GENDER EQUALITY, CHILD DEVELOPMENT
AND FAMILY WELFARE**

FEBRUARY 2013

REPUBLIC OF MAURITIUS

**STATISTICS
IN
MAURITIUS**

A GENDER APPROACH

	<u>PAGE</u>
INTRODUCTORY NOTES	7 - 10
CONCEPTS AND DEFINITIONS	11 & 12
SOURCE OF DATA	12
SYMBOLS & ABBREVIATIONS USED	12

LIST OF TABLES

<u>TABLE NO</u>	<u>DESCRIPTION</u>
-----------------	--------------------

SECTION 1 - SUMMARY STATISTICS

1.1	Basic facts - Republic of Mauritius, 2006 - 2011	13
-----	--	----

SECTION 2 - POPULATION

2.1	Mid-year resident population by age and sex, Republic of Mauritius, 2005 - 2011	14
2.1a	Mid-year resident population by age and sex, Island of Mauritius, 2005 - 2011	15
2.1b	Mid-year resident population by age and sex, Island of Rodrigues, 2005 - 2011	16
2.2	Mid-year resident population by geographical district, Republic of Mauritius, 2005 - 2011	17
2.2a	Percentage distribution of mid-year resident population by geographical district, Republic of Mauritius, 2005 - 2011	18
2.3	Number and percentage distribution of resident population (15 years and above) by marital status and sex, Republic of Mauritius, 1990, 2000 & 2011 Population Censuses	19
2.3a	Number and percentage distribution of resident population (15 years and above) by marital status and sex, Island of Mauritius, 1990, 2000 & 2011 Population Censuses	20
2.3b	Number and percentage distribution of resident population (15 years and above) by marital status and sex, Island of Rodrigues, 1990, 2000 & 2011 Population Censuses	21
2.4	Vital statistics, Republic of Mauritius, 2005 - 2011	22
2.4a	Vital statistics, Island of Mauritius, 2005 - 2011	22
2.4b	Vital statistics, Island of Rodrigues, 2005 - 2011	22
2.5	No of widowed by sex, Republic of Mauritius, 1990, 2000 & 2011 Population Censuses	23
2.5a	No of widowed by sex, Island of Mauritius, 1990, 2000 & 2011 Population Censuses	24
2.5b	No of widowed by sex, Island of Rodrigues, 1990, 2000 & 2011 Population Censuses	25
2.6	Selected rates, Republic of Mauritius, 2005 - 2011	26
2.6a	Selected rates, Island of Mauritius, 2005 - 2011	26
2.6b	Selected rates, Island of Rodrigues, 2005 - 2011	26
2.7	Life expectancy (years) at selected ages & sex, Republic of Mauritius, 2006 - 2011	28
2.8	Sex ratio for the Republic of Mauritius, Island of Mauritius & Island of Rodrigues, 1990, 2000 & 2011 Population Censuses	28

TABLE NO

DESCRIPTION

SECTION 3 - HEALTH

3.1	Number of deaths and death rates, Republic of Mauritius, 2006 - 2011	29
3.1a	Number of deaths and death rates, Island of Mauritius, 2006 - 2011	30
3.1b	Number of deaths and death rates, Island of Rodrigues, 2006 - 2011	31
3.2	Number of deaths by cause, Republic of Mauritius, Island of Mauritius and Island of Rodrigues, 2011	32
3.3	Infant deaths by cause and sex, Republic of Mauritius, 2007 - 2011	33
3.3a	Infant deaths by cause and sex, Island of Mauritius, 2007 - 2011	34
3.3b	Infant deaths by cause and sex, Island of Rodrigues, 2007 - 2011	35
3.4	Infant deaths by selected age and sex, Republic of Mauritius, 2006- 2011	36
3.4a	Infant deaths by selected age and sex, Island of Mauritius, 2006 - 2011	36
3.4b	Infant deaths by selected age and sex, Island of Rodrigues, 2006 - 2011	36
3.5	Number and percentage of current users of Family Planning Methods, Republic of Mauritius, as at 31st December, 2007 - 2011	37
3.5a	Number and percentage of current users of Family Planning Methods, Island of Mauritius, as at 31st December, 2007 - 2011	38
3.5b	Number and percentage of current users of Family Planning Methods, Island of Rodrigues, as at 31st December, 2007 - 2011	39
3.6	Immunisation coverage rate (Government Services), 2009 - 2011	40
3.7	Number of new cases of HIV/AIDS and deaths, 2009 - 2011	40

SECTION 4 - EDUCATION

4.1	Main indicators , Republic of Mauritius, 2007 - 2011	41
4.1 (c'td)	Main indicators , Republic of Mauritius, 2007 - 2011	42
4.2	Government expenditure on education, Republic of Mauritius, 2006 - 2011	42
4.3	Total enrolment and percentage enrolment by level and sex, Republic of Mauritius, 2006 - 2011	43
4.3a	Total enrolment and percentage enrolment by level and sex, Island of Mauritius, 2006 - 2011	43
4.3b	Total enrolment and percentage enrolment by level and sex, Island of Rodrigues, 2006 - 2011	43
4.4	Enrolment in pre-primary, primary & secondary schools by standard/form & sex, Republic of Mauritius, 2009 - 2011	44
4.5	Enrolment and pass rates by sex, Republic of Mauritius, 2005 - 2011	45
4.5a	Enrolment and pass rates by sex, Island of Mauritius, 2005 - 2011	45
4.5b	Enrolment and pass rates by sex, Island of Rodrigues, 2005 - 2011	45

<u>TABLE NO</u>	<u>DESCRIPTION</u>	
4.6	Number of teachers in primary and secondary schools, Republic of Mauritius, 2005 - 2011	46
4.6a	Number of teachers in primary and secondary schools, Island of Mauritius, 2005 - 2011	46
4.6b	Number of teachers in primary and secondary schools, Island of Rodrigues, 2005 - 2011	46
4.7	Percentage distribution of population 15 years & above by educational attainment & sex, Republic of Mauritius, 2000 & 2011 Population Censuses	47
4.7a	Percentage distribution of population 15 years & above by educational attainment & sex, Island of Mauritius, 2000 & 2011 Population Censuses	48
4.7b	Percentage distribution of population 15 years & above by educational attainment & sex, Island of Rodrigues, 2000 & 2011 Population Censuses	49

SECTION 5 - EMPLOYMENT

5.1	Percentage distribution of the population aged 16 years and over by activity status, Republic of Mauritius, 2006 - 2011	50
5.2	Percentage distribution of the population aged 16 years and over by major occupational group and sex, Republic of Mauritius, 2006 - 2011	51
5.3	Percentage distribution of the employed population aged 16 years and over by industrial sector and sex, Republic of Mauritius, 2006 - 2011	52
5.4	Percentage number of income earners by monthly income range and sex, Republic of Mauritius, 2006 - 2011	53
5.5	Employment in Government Services by occupation and sex, Republic of Mauritius, 2007 - 2011	54
5.5 (ct'd)	Employment in Government Services by occupation and sex, Republic of Mauritius, 2007 - 2011	55
5.5a	Employment in Government Services by occupation and sex, Island of Mauritius, 2007 - 2011	56
5.5a (ct'd)	Employment in Government Services by occupation and sex, Island of Mauritius, 2007 - 2011	57
5.5b	Employment in Government Services by occupation and sex, Island of Rodrigues, 2007 - 2011	58
5.5b(ct'd)	Employment in Government Services by occupation and sex, Island of Rodrigues, 2007 - 2011	59
5.6	Number of members at the National Legislative Assembly by year of election & sex, 1987 - 2011	60
5.6a	Number of members at the Municipal Council by year of election & sex, 1985 - 2005	60
5.6b	Number of members at the Village Council by year of election & sex, 1986 - 2005	60
5.6c	Number of members at the Rodrigues Regional Assembly by year of election & sex, 2002, 2006 & 2010	60

SECTION 6 - DISABILITY

6.1	Disabled population and disability prevalence by age and sex, Republic of Mauritius, 2000 & 2011 Population Censuses	61
6.1a	Disabled population and disability prevalence by age and sex, Island of Mauritius, 2000 & 2011 Population Censuses	62
6.1b	Disabled population and disability prevalence by age and sex, Island of Rodrigues, 2000 & 2011 Population Censuses	63
6.2	Disabled population and disability prevalence by type of disability and sex, Republic of Mauritius, 2000 & 2011 Population Censuses	64

<u>TABLE NO</u>	<u>DESCRIPTION</u>	
6.2a	Disabled population and disability prevalence by type of disability and sex, Island of Mauritius, 2000 & 2011 Population Censuses	64
6.2b	Disabled population and disability prevalence by type of disability and sex, Island of Rodrigues, 2000 & 2011 Population Censuses	64

SECTION 7 - SOCIAL BENEFITS

7.1	Population receiving Social Security benefits by sex and type , Republic of Mauritius, 2007 - 2011	65
7.1a	Population receiving Social Security benefits by sex and type , Island of Mauritius, 2007 - 2011	66
7.1b	Population receiving Social Security benefits by sex and type, Island of Rodrigues, 2007 - 2011	67

SECTION 8 - DATA COLLECTED BY THE MGE/CD/FW

8.1a	No of reported cases registered at the Family Support Bureau by nature of problem and sex, 2003 - 2007	68
8.1a (c'td)	No of reported cases registered at the Family Support Bureau by nature of problem and sex, 2003 - 2007	69
8.1b	Number of Orders issued by type and year, 2002 - 2011	69
8.1c	No of reported cases registered at the Family Support Bureau by nature of problem and sex, 2008 - 2011	70
8.1c (c'td)	No of reported cases registered at the Family Support Bureau by nature of problem and sex, 2008 - 2011	71
8.2	Number of child cases reported at the Child Development Unit/Family Support Bureau by nature of problem and sex, 2003 - 2007	72
8.2a	Number of child cases reported at the Child Development Unit/Family Support Bureau by nature of problem and sex, 2009 - 2011	73
8.2a (c'td)	Number of child cases reported at the Child Development Unit/Family Support Bureau by nature of problem and sex, 2009 - 2011	74
8.2a (c'td)	Number of child cases reported at the Child Development Unit/Family Support Bureau by nature of problem and sex, 2009 - 2011	75
8.3	Number of persons following training courses (held by the Home Economics Unit) by course followed and sex, 2006 - 2011	76

<u>TABLE NO</u>	<u>DESCRIPTION</u>	
SECTION 9 - CHILDREN		
9.1	Child population by age group , sex and urban/rural residence - 2011 Population Census, Republic of Mauritius	77
9.1a	Child population by age group , sex and urban/rural residence - 2011 Population Census, Island of Mauritius	77
9.1b	Child population by age group , sex and urban/rural residence - 2011 Population Census, Island of Rodrigues	77
9.2	Estimated child population by age group and sex, 2010 & 2011, Republic of Mauritius	78
9.2a	Estimated child population by age group and sex, 2010 & 2011, Island of Mauritius	78
9.2b	Estimated child population by age group and sex, 2010 & 2011, Island of Rodrigues	78
9.3	Children receiving selected Social Security benefits by age group & sex , Republic of Mauritius, 2007 - 2011	79
9.3a	Children receiving selected Social Security benefits by age group & sex , Island of Mauritius, 2007 - 2011	80
9.3b	Children receiving selected Social Security benefits by age group & sex , Island of Rodrigues, 2007 - 2011	81
9.4	Juvenile offences, Republic of Mauritius, 2006 - 2011	82
9.4a	Juvenile offences, Island of Mauritius, 2006 - 2011	82
9.4b	Juvenile offences, Island of Rodrigues, 2006 - 2011	82
9.5	Juveniles involved in offences by type of offence, Republic of Mauritius, 2006 - 2011	83
9.6	Number of convicted persons below 18 years by type of offence and sex , 2009 - 2011	84
9.7	Number of persons below 14 years prosecuted by police, by type of offence and sex, 2009 - 2011	85
9.8	Number of child abuse cases reported to the Police, 2009 - 2011	86
9.9	Number of child victims who have received counselling & assistance in recovery, 2009 - 2011	87
9.10	Number of children with disabilities attending schools, 2009 - 2011	88
9.11	Number of children deprived of family environment and admitted in institutions by age and sex, 2010 - 2011	88
9.12	Number of children placed in foster families, 2009 - 2011	88
9.13	Number of children adopted through inter - country adoption by sex, 2009 - 2011	88
9.14	Number of children under 16 years involved in labour, June 08 - May 11	88
9.15	Number of children placed in Probation Hostel by region, 2010 - 2011	89
9.15a	Number of children placed in Probation Hostel by type of crime/charge, 2010 - 2011	89
9.15b	Number of children placed in Probation Hostel by age and sex, 2010 - 2011	89
<u>TABLE NO.</u>		
<u>DESCRIPTION</u>		
9.16	Health care expenditure (Rs Billion)	90
9.17	Expenditure on programmes and services for children with disabilities (Rs Million)	90

9.18	Expenditure on support programmes for families (Rs Million)	90
9.19	Expenditure on protection of children who are in need of alternative care including the support of care services (Rs Million)	91
9.20	Expenditure on programmes & activities for the prevention of and protection from child abuse, child sexual exploitation & child labour (Rs Million)	91
9.21	Expenditure on juvenile justice and the recovery and reintegration of juvenile offenders (Rs Million)	91

SECTION 10 - MISCELLANEOUS

10.1	GII by selected countries, 2011	92
------	---------------------------------	----

LIST OF CHARTS

<u>FIGURE</u>	<u>DESCRIPTION</u>	<u>PAGE</u>
1	Age-specific fertility rates, Island of Mauritius and Island of Rodrigues, 2000	27
1a	Age-specific fertility rates, Island of Mauritius and Island of Rodrigues, 2011	27
2	Life expectancy at birth by sex, Republic of Mauritius, 1972 - 2000 Population Censuses	28
3	Total number of juveniles involved in offences, Republic of Mauritius, 2006 - 2011	83

INTRODUCTORY NOTES

1. Demographic characteristics

1.1 Population

The resident population of the Republic of Mauritius was estimated at 1,288,684 as at 31st December 2011, of whom 653,854 were females (634,503 in the Island of Mauritius and 19,131 in Rodrigues). The percentage of women was 50.7% in the Republic of Mauritius. In 2011, the mean age of women in the Island of Mauritius was 35.3 years against 33.7 for men.

1.2 Births

Women gave fewer births in 2011 as compared to 2010. The number of births occurring in the Republic of Mauritius in 2011 was 14,701 compared to 14,831 in 2010. The crude birth rate for the Republic of Mauritius was 11.7 for 2010 and 11.4 for 2011 and the total fertility rate which can be calculated as the average number of children born per woman was 1.47 and 1.45 respectively for 2010 and 2011.

1.3 Deaths

In 2011, 9,170 deaths were registered in the Republic of Mauritius compared to 9,131 in 2010. Lower mortality was observed for women than for men, with crude death rate being 8.3 for men and 6.0 for women.

Among men, the leading causes of death were diabetes (22.8%) followed by heart disease (17.4%) in 2011. In the case of women, 28.9% deaths were due to diabetes, followed by heart diseases (17.3%).

Diseases specific to women such as breast cancer, cervical cancer, cancer of uterus including cervix uteri and 'complications of pregnancy and childbirths' resulted in 4.7% of all deaths among women. On the other hand, 'prostate cancer', which is applicable to men only, was the cause of 1.1% of death among men.

1.4 Marriages

In the Republic of Mauritius, the number of registered marriages decreased from 10,555 in 2010 to 10,499 in 2011. In the Island of Mauritius it decreased from 10,370 in 2010 to 10,334 in 2011 whereas in Rodrigues it decreased from 185 to 165 for the same periods. For the Republic of Mauritius, the crude marriage rate, defined as the number of persons getting married per 1,000 mid-year population, stood at 16.5 and 16.3 for 2010 and 2011 respectively.

1.5 Divorces

Divorces at the same time, decreased from 1,837 in 2010 to 1,788 in 2011 for the Republic of Mauritius.

1.6 Marital status

2011 Population Census data on marital status for the Republic of Mauritius revealed that the proportion of single (never married) persons was higher among males than females. About 33% of males were single against 22% for females, mainly because women tend to get married at an earlier age than men.

Widowhood was found to be higher among women than among men as a result of a higher life expectancy among women. About 14% of women were widowed against 2% for men.

The proportion of married was about 60% among men and 58% among women.

1.7 Life expectancy

There has been a general improvement in life expectancy over the years though improvement was more pronounced among females. This has led to a general increase in the gap in life expectancy at birth between males and females, from 4.9 in 1972 to 7.3 in 1983, 7.8 in 1990 and then to 7.1 in 2000. The life expectancy at birth for 2011 in the Republic of Mauritius was 80.1 years for women compared to 69.8 years for men.

2. Education

Both 1990 and 2000 Population Censuses data reveal that the overall educational attainment for women in the Republic of Mauritius is lower than that for men. Among those aged 15 years and above, 79.4% of women had attained primary education or higher against 91.4% among men in 1990, whilst in 2000, the corresponding figures were 86.4% and 94.7% respectively.

The primary school population in the Republic of Mauritius was 116,068 in 2011 compared to 117,432 in 2010 (Table 4.4). Boys represented 51% of the 2011 primary school population and girls 49%. The Gross Enrolment Ratio (primary enrolment as a percentage of the population aged 6 to 11 years) was 100 % for boys and 100% for girls.

However, at secondary level, the Gross Enrolment Ratio (GER) is higher for girls than for boys. The 2011 Gross Enrolment Ratio was 74% for girls against 66% for boys.

Regarding overall performance in examinations, it is observed that girls do better than boys. In 2011, the pass rates for the Certificate of Primary Education (CPE) was 74.9% for girls as compared to 62.7% for boys. For the School Certificate (SC) examinations, girls recorded a higher pass rate, 81.2% against 71.8%. The pass rate for girls at the Higher School Certificate (HSC) was 82.3% against 75.3% for boys.

3. Activity status

Statistics show that women are less economically active compared to men. In 2011, 43.8% of women aged 16 years and above were active against 75.5% among men of the same age.

In 2011, around 37% of working women were either employed as plant and machine operators or engaged in elementary occupations. About 18% of them were service and sales workers.

Among employed women, 28.7% drew a salary of up to Rs 4,000 compared to 7.9% among employed men. The average monthly income in 2011 was lower for women than for men, Rs 11,000 against Rs 16,400.

In 2011, women comprised about 32% of the persons employed in the Government services (Central and Local Government). About 68% of those employed in various ministries were technicians, associate professionals and clerks.

4. Persons with disabilities

Up to date figures on persons with disabilities are obtained from statistics of beneficiaries of invalidity pension. These persons should however be certified by the medical board to be either permanently or substantially incapacitated to work to a degree of at least 60% for a period of at least 12 months. In the Republic of Mauritius, the number of such persons as at December 2011 was 43,455 (19,117 men, 24,338 women).

5. Domestic Violence and Child Abuse

The total number of cases (new and follow up) registered at the Family Support Bureaux has decreased by 53.1% from 22,337 in 2010 to 10,481 in 2011.

The main cause of family problems identified in new adult cases reported in 2011 was verbal assault followed by physical assault, alcoholism, extra marital affairs and interference of in-laws.

The total number of cases reported at the Child Development Unit of the Family Support Bureaux decreased from 6,021 in 2010 to 5,981 in 2011.

6. Children

6.1 Child population

In 2011, 26.0 % of the population in the Republic of Mauritius were less than 18 years compared to 26.6% in 2010. The corresponding figures for the Island of Mauritius and Island of Rodrigues for 2011 were 25.7% and 36.4% respectively.

6.2 Juvenile offences

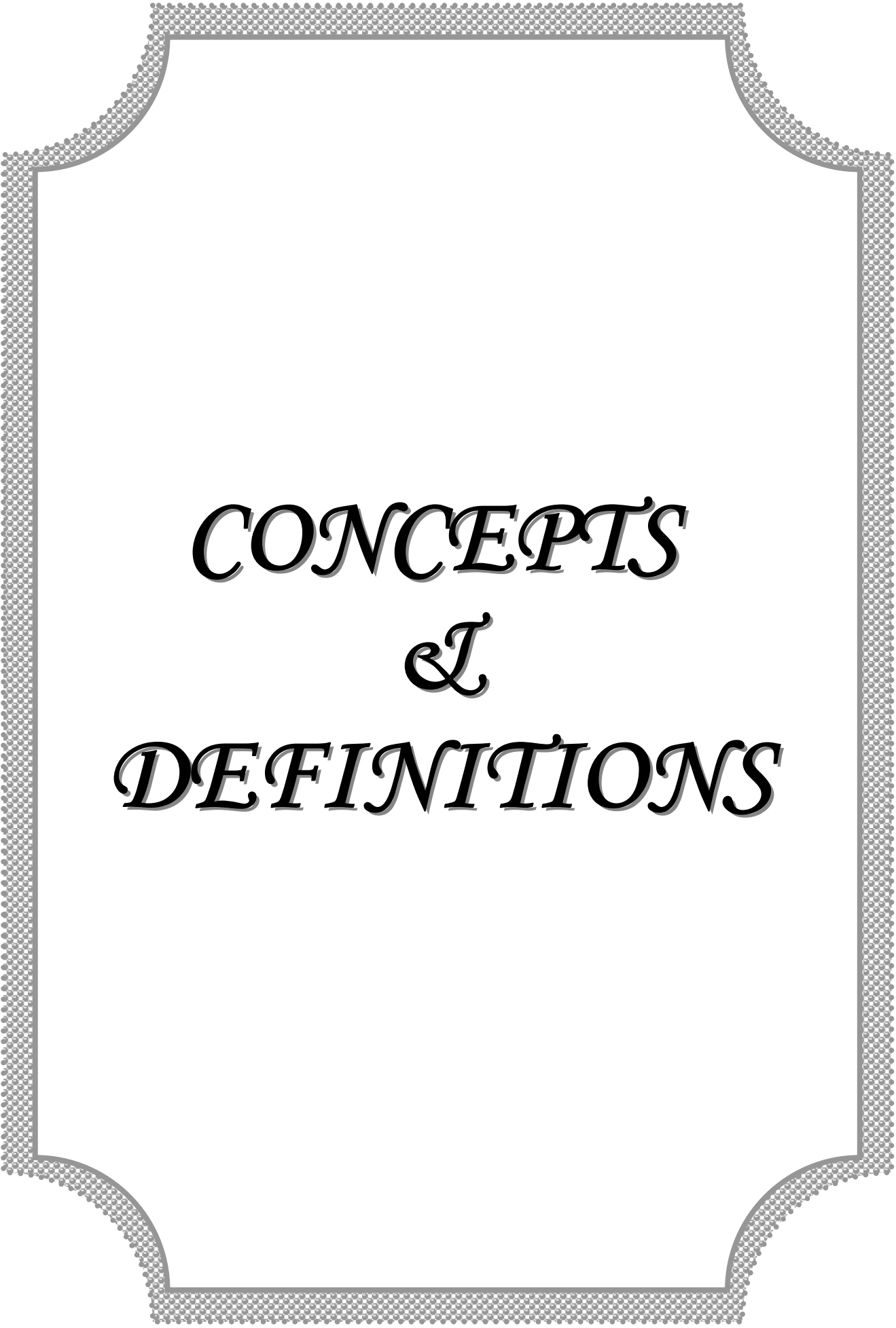
The number of juveniles involved in offences in the Republic of Mauritius increased from 648 in 2010 to 701 in 2011. The juvenile delinquency rate thus increased from 5.2 in 2010 to 5.8 in 2011 .

In 2011, the juvenile delinquency rate for the Island of Mauritius was 6.0 and that for Rodrigues 0.9.

In the Republic of Mauritius in 2011, the most common juvenile offence was assault (41.8%) followed by larceny (19.1%).

6.3 Orphans

As at December 2011, the number of beneficiaries of Basic Orphan's pension aged under 19 years in the Republic of Mauritius totaled 371, among which 176 were females and 195 males.



*CONCEPTS
&
DEFINITIONS*

CONCEPTS & DEFINITIONS

1. Median age : The age which divides the population into two equal-size groups, one of which is younger and the other older than the median.
2. Crude birth rate : The number of live births registered in a year per 1,000 mid-year population.
3. General fertility rate : The number of live births occurring in a year per 1,000 women aged (15 - 49) years at mid-year.
4. Total fertility rate : The average number of children born to an average woman assuming that she survives to the end of her child-bearing age and is subjected to a fixed schedule of age-specific fertility rates.
5. Gross reproduction rate : The average number of daughters born to an average woman assuming that she survives to the end of her child-bearing age and is subjected to a fixed schedule of age-specific fertility rates.
6. Net reproduction rate : The extent to which an average woman will replace herself assuming a fixed schedule of age-specific mortality and fertility rates to prevail through her reproductive span of life.
7. Crude death rate : The number of deaths in a year per 1,000 mid-year population.
8. Infant death : Death of an infant aged under one year.
9. Infant mortality rate : The number of infant deaths in a year per 1,000 live-births during the year.
10. Under 5 mortality rate : The number of deaths of children aged under 5 years in a year per 1,000 live-births during the year.
11. Still birth : A child born after the twenty-eighth week of pregnancy and not breathing or showing any signs of life at any time after being completely expelled from the mother.
12. Maternal mortality rate : The number of deaths due to pregnancy, childbirth and the puerperium per 1,000 live births during that year.
13. Marriage rate : The number of persons married in a year per 1,000 mid-year population.
14. Divorce rate : The number of persons divorced in a year per 1,000 mid-year population.
15. Enrolment rate
 - (i) Primary : The number of students (including students of less than 6 years or greater than 11 years) enrolled per 100 population aged (6 – 11) years.
 - (ii) Secondary : The number of students enrolled per 100 population aged (12 – 19) years.

- 16. Economically active population : The economically active population is made up of the employed and the unemployed populations. The employed population consists of persons, who are working while the unemployed population consists of persons who are *not working* but who are *looking for work and are available for work*.
- 17. Not economically active population : The inactive population is neither employed nor unemployed and consists mainly of students, homemakers, retired persons and the disabled.
- 18. Government Services : Total Government services include both Central and Local Governments but exclude Extra Budgetary Units (EBUs).

SOURCE OF DATA

All data published have been obtained from Statistics Mauritius (formerly Central Statistics Office) except where otherwise stated.

SYMBOLS & ABBREVIATIONS USED

-	Nil
- . -	Not applicable
NA or ...	Not available
Ns	Not stated
No.	Number
BS	Both Sexes
000	Thousand
%	Percentage
TFR	Total Fertility Rate
CMPHS	Continuous Multi Purpose Household Survey
CDU	Child Development Unit
DVIU	Domestic Violence Intervention Unit
FCS	Family Counselling Service
FSB	Family Support Bureau
MGECDFW	Ministry of Gender Equality, Child Development and Family Welfare
UOM	University of Mauritius
MIE	Mauritius Institute of Education
MGI	Mahatma Gandhi Institute

Table 1.1 - Basic facts - Republic of Mauritius, 2006 - 2011

	2006	2007	2008	2009	2010	2011
1. Population (as at 31st December)	1,256,727	1,264,863	1,272,031	1,277,851	1,283,415	1,288,684
2. Population density (per km2)	616	620	624	626	629	632
3. Population under 18 years (mid year)	363,284	359,656	354,817	348,545	341,154	333,319
4. Population growth rate (%)	0.6	0.6	0.6	0.5	0.4	0.4
6. Total fertility rate	1.70	1.66	1.58	1.50	1.47	1.45
6. Adolescent fertility rate	33.9	35.4	33.9	32.6	30.6	29.8
5. Crude birth rate*	14.1	13.5	12.9	12.0	11.7	11.4
7. Crude marriage rate*	18.3	18.3	17.7	16.7	16.5	16.3
8. Divorce rate*	2.2	2.1	2.5	3.4	2.9	2.8
9. Crude death rate*	7.3	6.7	7.1	7.2	7.1	7.1
10. Infant mortality rate#	14.1	15.3	14.4	13.4	12.5	12.9
10. Under 5 mortality rate#	16.9	17.1	16.6	15.4	14.7	15.9
11. Still birth rate#	8.3	10.0	10.0	8.9	6.8	9.4
12. Maternal mortality rate #	0.17	0.36	0.37	0.65	0.33	0.34
13. Life expectancy at birth (yrs):						
Male	69.1	69.2	69.4	69.5	69.7	69.8
Female	75.9	76.1	76.6	76.7	76.9	80.1
15. Labour force ('000)	565.1	570.5	583.4	587.3	581.3	582.8
16. Employed population ('000)	515.3	523.7	543.0	545.8	536.1	536.7
17. Unemployed population ('000)	49.8	46.8	40.4	41.5	45.2	46.1
18. Per capita GDP (Rs)						
(at market prices)	164,669	186,818	209,128	221,398	233,203	250,924
19. Inflation rate (%)	8.9	8.8	9.7	2.5	2.9	6.5
20. Total exports (Rs Million)	74,037	69,708	67,970	61,681 ^r	61990 ^r	62358 ^p
21. Total imports (Rs Million)	115,502	121,037	132,165	118,444 ^r	134882 ^r	147815 ^p

* per 1000 mid- year population

^r revised

per 1000 live-births

^p provisional



POPULATION

Table 2.1 - Mid-year resident population by age and sex, Republic of Mauritius, 2005 - 2011

	2005			2006			2007			2008			2009			2010			2011		
	Male	Female	Both sexes	Male	Female	Both sexes	Male	Female	Both sexes	Male	Female	Both sexes	Male	Female	Both sexes	Male	Female	Both sexes	Male	Female	Both sexes
Resident population ('000)	614.8	628.5	1,243.3	619.2	633.5	1,252.7	622.9	637.5	1,260.4	626.6	642.0	1,268.6	629.1	645.9	1,275.0	631.7	649.2	1,280.9	633.7	652.3	1,286.1
<i>% of whom:</i>																					
<i>under 15 yrs</i>	25.1	23.8	24.4	24.6	23.3	23.9	23.9	22.7	23.3	23.4	22.1	22.7	22.8	21.6	22.2	22.2	21.0	21.6	21.7	20.5	21.1
<i>(15 - 59) yrs</i>	66.6	65.3	66.0	67.0	65.7	66.4	67.4	66.0	66.7	67.7	66.2	66.9	67.9	66.4	67.1	68.0	66.5	67.2	67.9	66.4	67.1
<i>(60 - 64) yrs</i>	2.8	3.2	3.0	2.9	3.3	3.1	3.1	3.5	3.3	3.3	3.7	3.5	3.5	3.9	3.7	3.7	4.1	3.9	4.2	4.5	4.4
<i>65 yrs & over</i>	5.5	7.7	6.6	5.5	7.7	6.6	5.6	7.8	6.7	5.7	7.9	6.8	5.8	8.1	7.0	6.0	8.4	7.3	6.2	8.6	7.4
Mean age (yrs)	31.5	32.9	32.2	31.7	33.2	32.5	32.1	33.6	32.8	32.4	33.9	33.1	32.7	34.3	33.5	33.1	34.7	33.9	33.5	35.1	34.3
Median age (yrs)	29.8	31.1	30.4	30.0	31.5	30.8	30.5	31.9	31.2	30.9	32.4	31.6	31.4	32.8	32.1	31.9	33.3	32.6	32.3	33.7	33.0

Table 2.1a - Mid-year resident population by age and sex, Island of Mauritius, 2005 - 2011

	2005			2006			2007			2008			2009			2010			2011		
	Male	Female	Both sexes	Male	Female	Both sexes	Male	Female	Both sexes	Male	Female	Both sexes	Male	Female	Both sexes	Male	Female	Both sexes	Male	Female	Both sexes
Resident population ('000)	596.5	609.8	1,206.3	600.9	614.7	1,215.6	604.5	618.6	1,223.1	608.0	623.0	1,231.0	610.5	626.8	1,237.3	613.0	630.1	1,243.1	615.0	633.1	1,248.1
<i>% of whom:</i>																					
<i>under 15 yrs</i>	24.9	23.6	24.2	24.3	23.1	23.7	23.7	22.5	23.1	23.1	21.9	22.5	22.5	21.3	21.9	21.9	20.7	21.3	21.4	20.2	20.8
<i>(15 - 59) yrs</i>	66.8	65.5	66.1	67.3	65.9	66.6	67.6	66.2	66.9	67.9	66.4	67.2	67.3	66.6	67.4	68.3	66.7	67.5	68.2	66.6	67.4
<i>(60 - 64) yrs</i>	2.8	3.2	3.0	2.9	3.3	3.1	3.1	3.5	3.3	3.3	3.8	3.5	3.4	3.9	3.7	3.7	4.1	3.9	4.2	4.6	4.4
<i>65 yrs & over</i>	5.5	7.7	6.6	5.5	7.7	6.6	5.6	7.8	6.7	5.7	7.9	6.8	5.8	8.1	7.0	6.0	8.4	7.2	6.2	8.6	7.4
Mean age (yrs)	31.6	33.1	32.3	31.9	33.4	32.6	32.2	33.7	33.0	32.5	34.1	33.3	32.9	34.5	33.7	33.3	34.8	34.1	33.7	35.3	34.5
Median age (yrs)	30.0	31.3	30.7	30.3	31.7	31.0	30.7	32.2	31.5	31.2	32.6	31.9	31.6	33.1	32.4	32.1	33.6	32.8	32.5	34.0	33.3

Table 2.1b - Mid-year resident population by age and sex, Island of Rodrigues, 2005 - 2011

	2005			2006			2007			2008			2009			2010			2011		
	Male	Female	Both sexes	Male	Female	Both sexes	Male	Female	Both sexes	Male	Female	Both sexes	Male	Female	Both sexes	Male	Female	Both sexes	Male	Female	Both sexes
Resident population ('000)	18.3	18.6	36.9	18.3	18.7	37.0	18.4	18.9	37.3	18.6	19.0	37.6	18.7	19.0	37.7	18.7	19.1	37.8	18.7	19.2	37.9
<i>% of whom:</i>																					
<i>under 15 yrs</i>	<i>31.4</i>	<i>30.4</i>	<i>30.9</i>	<i>31.4</i>	<i>30.3</i>	<i>30.9</i>	<i>31.6</i>	<i>30.4</i>	<i>31.0</i>	<i>31.7</i>	<i>30.3</i>	<i>31.0</i>	<i>31.7</i>	<i>30.1</i>	<i>30.9</i>	<i>31.7</i>	<i>29.9</i>	<i>30.8</i>	<i>31.7</i>	<i>29.5</i>	<i>30.6</i>
<i>(15 - 59) yrs</i>	<i>60.2</i>	<i>59.4</i>	<i>59.8</i>	<i>59.9</i>	<i>59.4</i>	<i>59.6</i>	<i>59.5</i>	<i>59.1</i>	<i>59.3</i>	<i>59.2</i>	<i>59.0</i>	<i>59.1</i>	<i>59.1</i>	<i>59.1</i>	<i>59.1</i>	<i>58.9</i>	<i>59.1</i>	<i>59.0</i>	<i>58.7</i>	<i>59.2</i>	<i>59.0</i>
<i>(60 - 64) yrs</i>	<i>3.1</i>	<i>3.1</i>	<i>3.1</i>	<i>2.9</i>	<i>3.0</i>	<i>3.0</i>	<i>2.9</i>	<i>3.0</i>	<i>3.0</i>	<i>2.8</i>	<i>2.9</i>	<i>2.9</i>	<i>2.9</i>	<i>2.8</i>	<i>2.9</i>	<i>2.9</i>	<i>2.8</i>	<i>2.9</i>	<i>2.9</i>	<i>3.0</i>	<i>2.9</i>
<i>65 yrs & over</i>	<i>5.4</i>	<i>7.1</i>	<i>6.2</i>	<i>5.8</i>	<i>7.3</i>	<i>6.5</i>	<i>6.0</i>	<i>7.5</i>	<i>6.7</i>	<i>6.2</i>	<i>7.8</i>	<i>7.0</i>	<i>6.3</i>	<i>7.9</i>	<i>7.1</i>	<i>6.5</i>	<i>8.1</i>	<i>7.3</i>	<i>6.7</i>	<i>8.3</i>	<i>7.5</i>
Mean age (yrs)	27.8	28.7	28.3	27.9	28.9	28.4	28.1	29.1	28.6	28.2	29.3	28.7	28.4	29.5	28.9	28.6	29.7	29.2	28.8	30.0	29.4
Median age (yrs)	23.5	24.0	23.7	23.5	24.2	23.9	23.8	24.7	24.2	24.0	25.0	24.5	24.2	25.4	24.8	24.4	25.6	25.0	24.5	25.8	25.2

Table 2.2 - Mid-year resident population by geographical district, Republic of Mauritius, 2005 - 2011

	2005			2006			2007			2008			2009			2010			2011		
	Male	Female	Both sexes	Male	Female	Both sexes	Male	Female	Both sexes	Male	Female	Both sexes	Male	Female	Both sexes	Male	Female	Both sexes	Male	Female	Both sexes
Total resident population ('000)	614.7	628.5	1,243.2	619.2	633.5	1,252.7	622.9	637.5	1,260.4	626.6	642.0	1,268.6	629.1	645.9	1,275.0	631.7	649.2	1,280.9	633.7	652.3	1,286.0
<i>of whom in :</i>																					
Port Louis	64.6	65.8	130.4	64.6	65.8	130.4	64.4	65.7	130.1	64.3	65.6	129.9	63.9	65.5	129.4	63.6	65.3	128.9	63.2	65.1	128.3
Pamplemousses	64.9	66.3	131.2	65.6	67.1	132.7	66.3	67.8	134.1	66.9	68.5	135.4	67.5	69.2	136.7	68.0	69.8	137.8	68.5	70.4	138.9
Riviere du Rempart	52.1	53.1	105.2	52.5	53.5	106.0	52.9	53.9	106.8	53.3	54.4	107.7	53.6	54.7	108.3	53.9	55.1	109.0	54.0	55.5	109.5
Flacq	67.5	67.5	135.0	68.1	68.1	136.2	68.6	68.6	137.2	69.0	69.2	138.2	69.4	69.7	139.1	69.7	70.2	139.9	70.0	70.7	140.7
Grand Port	55.7	56.6	112.3	56.1	57.0	113.1	56.4	57.3	113.7	56.7	57.7	114.4	56.9	58.0	114.9	57.2	58.2	115.4	57.3	58.5	115.8
Savanne	34.3	34.9	69.2	34.5	35.1	69.6	34.7	35.2	69.9	34.8	35.4	70.2	34.8	35.5	70.3	34.9	35.6	70.5	34.9	35.6	70.5
Plaines Wilhems	183.7	191.4	375.1	184.8	192.8	377.6	185.6	193.8	379.4	186.4	194.9	381.3	187.0	196.0	383.0	187.6	196.8	384.4	188.1	197.6	385.7
Moka	39.1	40.0	79.1	39.4	40.3	79.7	39.6	40.5	80.1	39.8	40.8	80.6	40.0	40.9	80.9	40.1	41.1	81.2	40.2	41.2	81.4
Black River	34.5	34.3	68.8	35.3	35.1	70.4	36.0	35.8	71.8	36.7	36.6	73.3	37.3	37.3	74.6	38.0	38.0	76.0	38.6	38.6	77.2
Island of Rodrigues	18.3	18.6	36.9	18.3	18.7	37.0	18.4	18.9	37.3	18.6	19.0	37.6	18.7	19.1	37.8	18.7	19.1	37.8	18.7	19.2	37.9

Table 2.2a - Percentage distribution of mid-year resident population by geographical district, Republic of Mauritius, 2005 - 2011

	2005			2006			2007			2008			2009			2010			2011		
	Male	Female	Both sexes	Male	Female	Both sexes	Male	Female	Both sexes	Male	Female	Both sexes	Male	Female	Both sexes	Male	Female	Both sexes	Male	Female	Both sexes
Total resident population ('000)	614.7	628.5	1,243.2	619.2	633.5	1,252.7	622.9	637.5	1,260.4	626.6	642.0	1,268.6	629.1	645.9	1,275.0	631.7	649.2	1,280.9	633.7	652.3	1,286.1
% of whom in :																					
Port Louis	10.5	10.5	10.5	10.4	10.4	10.4	10.3	10.3	10.3	10.3	10.2	10.2	10.2	10.1	10.1	10.1	10.1	10.1	10.0	10.0	10.0
Pamplemousses	10.5	10.5	10.5	10.6	10.6	10.6	10.6	10.6	10.6	10.7	10.7	10.7	10.7	10.7	10.7	10.8	10.8	10.8	10.8	10.8	10.8
Riviere du Rempart	8.5	8.4	8.5	8.5	8.5	8.5	8.5	8.5	8.5	8.5	8.5	8.5	8.5	8.5	8.5	8.5	8.5	8.5	8.5	8.5	8.5
Flacq	11.0	10.7	10.9	11.0	10.7	10.9	11.0	10.8	10.9	11.0	10.8	10.9	11.0	10.8	10.9	11.0	10.8	10.9	11.1	10.8	10.9
Grand Port	9.1	9.0	9.0	9.0	9.0	9.0	9.1	9.0	9.0	9.0	9.0	9.0	9.0	9.0	9.0	9.1	9.0	9.0	9.0	9.0	9.0
Savanne	5.5	5.5	5.5	5.6	5.5	5.6	5.6	5.5	5.5	5.5	5.5	5.5	5.5	5.5	5.5	5.5	5.5	5.5	5.5	5.5	5.5
Plaines Wilhems	29.9	30.5	30.2	29.8	30.4	30.1	29.8	30.4	30.1	29.8	30.3	30.1	29.7	30.3	30.0	29.7	30.3	30.0	29.7	30.3	30.0
Moka	6.4	6.4	6.4	6.4	6.4	6.4	6.4	6.4	6.4	6.3	6.3	6.3	6.4	6.3	6.3	6.3	6.3	6.3	6.3	6.3	6.3
Black River	5.6	5.5	5.5	5.7	5.5	5.6	5.8	5.6	5.7	5.9	5.7	5.8	5.9	5.8	5.9	6.0	5.9	5.9	6.1	5.9	6.0
Island of Rodrigues	3.0	3.0	3.0	3.0	3.0	3.0	3.0	3.0	3.0	3.0	3.0	3.0	3.0	3.0	3.0	3.0	2.9	3.0	3.0	2.9	2.9

Table 2.3 - Number and % distribution of resident population (15+ yrs) by marital status and sex, Republic of Mauritius, 1990, 2000 & 2011 Population Censuses

Marital status	1990					2000					2011				
	Male		Female		Both sexes	Male		Female		Both sexes	Male		Female		Both sexes
	Number	%	Number	%	Number	Number	%	Number	%	Number	Number	%	Number	%	Number
Single	145,054	39.3	97,557	26.1	242,611	153,921	35.5	103,810	23.2	257,731	159,829	33.2	111,315	22.3	271,144
Married/in a union	211,353	57.2	215,206	57.6	426,559	262,263	60.5	266,820	59.6	529,083	289,300	60.0	289,026	57.9	578,326
Widowed	6,523	1.8	46,770	12.5	53,293	7,765	1.8	58,339	13.0	66,104	10,583	2.2	69,392	13.9	79,975
Divorced/separated	5,681	1.5	13,380	3.6	19,061	8,821	2.0	16,987	3.8	25,808	17,286	3.6	23,740	4.8	41,026
Other/not stated	657	0.2	1,005	0.3	1,662	881	0.2	2,009	0.4	2,890	4,899	1.0	5,715	1.1	10,614
Total	369,268	100.0	373,918	100.0	743,186	433,651	100.0	447,965	100.0	881,616	481,897	100.0	499,188	100.0	981,085

Table 2.3a - Number and % distribution of resident population (15+ yrs) by marital status and sex, Island of Mauritius, 1990, 2000 & 2011 Population Censuses

Marital status	1990					2000					2011				
	Male		Female		Both sexes	Male		Female		Both sexes	Male		Female		Both sexes
	Number	%	Number	%	Number	Number	%	Number	%	Number	Number	%	Number	%	Number
Single	141,095	39.3	94,876	26.1	235,971	149,220	35.4	100,510	23.1	249,730	155,173	33.2	108,423	22.4	263,596
Married/in a union	205,527	57.2	209,314	57.6	414,841	255,351	60.6	259,885	59.7	515,236	281,234	60.1	280,976	58.0	562,210
Widowed	6,379	1.8	45,976	12.6	52,355	7,566	1.8	57,273	13.2	64,839	10,223	2.2	67,911	14.0	78,134
Divorced/separated	5,470	1.5	12,991	3.6	18,461	8,535	2.0	16,505	3.8	25,040	16,539	3.5	22,652	4.7	39,191
Other/not stated	655	0.2	549	0.2	1,204	857	0.2	1,284	0.3	2,141	4,773	1.0	4,545	0.9	9,318
Total	359,126	100.0	363,706	100.0	722,832	421,529	100.0	435,457	100.0	856,986	467,942	100.0	484,507	100.0	952,449

Table 2.3b - Number and % distribution of resident population (15+ yrs) by marital status and sex, Island of Rodrigues, 1990, 2000, & 2011 Population Censuses

Marital status	1990					2000					2011				
	Male		Female		Both sexes	Male		Female		Both sexes	Male		Female		Both sexes
	Number	%	Number	%	Number	Number	%	Number	%	Number	Number	%	Number	%	Number
Single	3,959	39.0	2,681	26.3	6,640	4,701	38.8	3,300	26.4	8,001	4,656	33.4	2,892	19.7	7,548
Married/in a union	5,826	57.4	5,892	57.7	11,718	6,912	57.0	6,935	55.4	13,847	8,066	57.8	8,051	54.8	16,117
Widowed	144	1.4	794	7.8	938	199	1.6	1,066	8.5	1,265	360	2.6	1,481	10.1	1,841
Divorced/separated	211	2.1	389	3.8	600	286	2.4	482	3.9	768	747	5.4	1,088	7.4	1,835
Other/not stated	2	0.0	456	4.5	458	24	0.2	725	5.8	749	126	0.9	1,170	8.0	1,296
Total	10,142	100.0	10,212	100.0	20,354	12,122	100.0	12,508	100.0	24,630	13,955	100.0	14,682	100.0	28,637

Table 2.4 - Vital statistics, Republic of Mauritius, 2005 - 2011

	2005	2006	2007	2008	2009	2010	2011
Still births	185	147	172	165	138	103	139
Live births	18,578	17,320	16,894	16,094	15,259	14,831	14,701
<i>of which to women</i>							
<i>(Under 15) yrs</i>	26	27	43	38	38	23	25
<i>(15 - 19) yrs</i>	1,534	1,602	1,785	1,765	1,709	1,617	1,550
<i>(20 - 44) yrs</i>	15,223	14,996	15,046	14,275	13,486	13,175	13,023
<i>(45 - 49) yrs</i>	18	27	20	16	26	16	28
Share of low birth weight (among known birthweight)	15.8	14.3	15.7	14.9	16.4	17.1	17.0
Marriages	11,294	11,471	11,547	11,197	10,619	10,555	10,499
Divorces	1,133	1,379	1,302	1,569	2,154	1,837	1,788
of which petitioned by women	693	866	813	1,093	1,326	1,163	1,063

Table 2.4a - Vital statistics, Island of Mauritius, 2005 - 2011

	2005	2006	2007	2008	2009	2010	2011
Still births	173	135	157	159	133	95	136
Live births	17,707	16,467	16,046	15,327	14,556	14,128	14,002
<i>of which to women</i>							
<i>(Under 15) yrs</i>	26	24	34	33	34	21	23
<i>(15 - 19) yrs</i>	1,405	1,478	1,667	1,652	1,592	1,498	1,450
<i>(20 - 44) yrs</i>	14,861	14,355	14,328	13,626	12,906	12,593	12,417
<i>(45 - 49) yrs</i>	15	26	17	16	24	16	24
Share of low birth weight (among known birthweight)	16.0	14.3	15.9	15.0	16.7	17.4	17.1
Marriages	11,076	11,262	11,361	11,012	10,446	10,370	10,334

Table 2.4b - Vital statistics, Island of Rodrigues, 2005 - 2011

	2005	2006	2007	2008	2009	2010	2011
Still births	12	12	15	6	5	8	3
Live births	871	853	848	767	703	703	699
<i>of which to women</i>							
<i>(Under 15) yrs</i>	-	3	9	5	4	2	2
<i>(15 - 19) yrs</i>	129	124	122	113	117	119	100
<i>(20 - 44) yrs</i>	662	641	713	649	580	582	606
<i>(45 - 49) yrs</i>	3	1	4	-	2	-	4
Share of low birth weight (among known birthweight)	11.5	14.3	11.4	12.7	10.0	10.3	15.5
Marriages	218	209	186	185	173	185	165

Table 2.5 - Number of widowed by sex, Republic of Mauritius, 1990, 2000 & 2011 Population Censuses

Age group (years)	1990					2000					2011				
	Number of widowed				Total population	Number of widowed				Total population	Number of widowed				Total population
	Male		Female			Male		Female			Male		Female		
	No	%	No	%		No	%	No	%		No	%	No	%	
15 - 19	4	0.1	9	0.0	97,202	1	0.0	8	0.0	102,088	3	0.0	6	0.0	101,008
20 - 24	9	0.1	90	0.2	102,664	12	0.2	98	0.2	110,892	4	0.0	55	0.1	92,671
25 - 29	47	0.7	308	0.7	105,582	31	0.4	273	0.5	93,797	47	0.1	149	0.2	90,937
30 - 34	75	1.2	733	1.6	93,589	64	0.8	684	1.2	99,515	104	0.1	467	0.5	103,429
35 - 39	111	1.7	1,464	3.1	81,209	120	1.5	1,449	2.5	101,946	147	0.2	904	1.0	87,797
40 - 44	123	1.9	2,559	5.5	60,435	168	2.2	2,598	4.4	90,406	277	0.3	1,916	2.1	89,386
45 - 49	183	2.8	3,202	6.8	44,710	304	3.9	4,408	7.6	77,931	476	0.5	3,818	3.8	99,341
50 - 54	345	5.3	4,328	9.3	38,038	332	4.3	5,847	10.0	56,939	680	0.8	5,857	6.8	86,337
55 - 59	543	8.3	5,114	10.9	32,163	476	6.1	6,354	10.9	40,491	933	1.3	8,256	11.3	73,054
60 & over	5,082	77.9	28,950	61.9	87,522	6,251	80.6	36,590	62.7	107,492	68,267	43.6	47,917	30.6	156,506
15 & over	6,522	100.0	46,757	100.0	743,114	7,759	100.0	58,309	100.0	881,497	70,938	100.0	69,345	100.0	980,466

Table 2.5a - Number of widowed by sex, Island of Mauritius, 1990, 2000 & 2011 Population Censuses

Age group (years)	1990					2000					2011				
	Number of widowed				Total population	Number of widowed				Total population	Number of widowed				Total population
	Male		Female			Male		Female			Male		Female		
	No	%	No	%	No	%	No	%	No	%	No	%	No	%	
15 - 19	4	0.1	9	0.0	93,213	1	0.0	8	0.0	97,573	3	0.0	5	0.0	97,437
20 - 24	9	0.1	90	0.2	99,478	12	0.2	95	0.1	107,318	4	0.0	54	0.2	87,719
25 - 29	47	0.7	299	0.7	103,027	30	0.4	265	0.3	91,046	46	0.1	140	0.4	87,746
30 - 34	74	1.2	718	1.6	91,403	64	0.8	668	0.7	97,046	101	0.1	449	1.2	100,036
35 - 39	109	1.7	1,442	3.1	79,579	116	1.5	1,419	1.4	99,654	144	0.2	880	2.5	85,037
40 - 44	122	1.9	2,540	5.5	59,146	164	2.2	2,553	2.9	88,307	266	0.3	1,873	4.5	86,885
45 - 49	177	2.8	3,137	6.8	43,321	295	3.9	4,340	5.7	76,409	465	0.5	3,754	7.6	97,019
50 - 54	332	5.2	4,272	9.3	36,866	322	4.3	5,787	10.4	55,724	665	0.8	5,750	10.1	84,186
55 - 59	529	8.3	5,033	11.0	31,235	460	6.1	6,252	15.9	39,270	910	1.3	8,122	10.9	71,491
60 & over	4,975	78.0	28,423	61.8	85,495	6,096	80.6	35,857	340.7	10,525	7,606	5.0	46,839	62.6	152,300
15 & over	6,378	100.0	45,963	100.0	722,763	7,560	100.0	57,244	100.0	762,872	10,210	100.0	67,866	100.0	949,856

Table 2.5b - Number of widowed by sex, Island of Rodrigues, 1990, 2000 & 2011 Population Censuses

Age group (years)	1990					2000					2011				
	Number of widowed				Total population	Number of widowed				Total population	Number of widowed				Total population
	Male		Female			Male		Female			Male		Female		
	No	%	No	%	No	%	No	%	No	%	No	%	No	%	
15 - 19	-	-	-	-	3,989	-	-	-	-	4,515	-	-	1	0.0	3,571
20 - 24	-	-	-	-	3,186	-	-	3	0.3	3,574	-	-	1	0.0	2,952
25 - 29	-	-	9	1.1	2,555	1	0.5	8	0.8	2,751	1	0.0	9	0.3	3,191
30 - 34	1	0.7	15	1.9	2,186	-	-	16	1.5	2,469	3	0.1	18	0.5	3,393
35 - 39	2	1.4	22	2.8	1,630	4	2.0	30	2.8	2,292	3	0.1	24	0.9	2,760
40 - 44	1	0.7	19	2.4	1,289	4	2.0	45	4.2	2,099	11	0.4	43	1.7	2,501
45 - 49	6	4.2	65	8.2	1,389	9	4.5	68	6.4	1,522	11	0.5	64	2.8	2,322
50 - 54	13	9.0	56	7.0	1,172	10	5.0	60	5.6	1,215	15	0.7	107	5.0	2,151
55 - 59	14	9.7	81	10.2	928	16	8.1	102	9.6	1,221	23	1.5	134	8.6	1,563
60 & over	107	74.3	527	66.4	2,027	155	77.9	733	68.8	2,967	288	6.8	1,078	25.6	4,206
15 & over	144	100.0	794	100.0	20,351	199	100.0	1,065	100.0	24,625	355	100.0	1,479	100.0	28,610

Table 2.6 - Selected rates, Republic of Mauritius, 2005 - 2011

	2005	2006	2007	2008	2009	2010	2011
Crude birth rate	15.1	14.1	13.5	12.9	12.0	11.7	11.4
General fertility rate	54.0	50.0	48.6	46.0	43.5	42.2	41.5
Total fertility rate	1.82	1.70	1.66	1.58	1.50	1.47	1.45
Gross reproduction rate	0.90	0.83	0.81	0.79	0.74	0.73	0.72
Net reproduction rate	0.87	0.81	0.79	0.77	0.72	0.71	0.70

Table 2.6a - Selected rates, Island of Mauritius, 2005 - 2011

	2005	2006	2007	2008	2009	2010	2011
Crude birth rate	14.9	13.8	13.2	12.7	11.8	11.5	11.2
General fertility rate	52.9	48.9	47.5	45.1	42.6	41.3	40.6
Total fertility rate	1.79	1.67	1.63	1.56	1.48	1.44	1.42
Gross reproduction rate	0.88	0.81	0.80	0.77	0.73	0.72	0.70
Net reproduction rate	0.86	0.79	0.78	0.75	0.72	0.70	0.69

Table 2.6b - Selected rates, Island of Rodrigues, 2005 - 2011

	2005	2006	2007	2008	2009	2010	2011
Crude birth rate	24.6	24.2	22.4	20.8	19.1	18.9	18.4
General fertility rate	91.0	87.5	84.5	78.7	72.3	72.6	73.7
Total fertility rate	2.91	2.85	2.72	2.51	2.36	2.32	2.38
Gross reproduction rate	1.43	1.42	1.35	1.23	1.04	1.15	1.19
Net reproduction rate	1.38	1.37	1.31	1.19	1.00	1.11	1.15

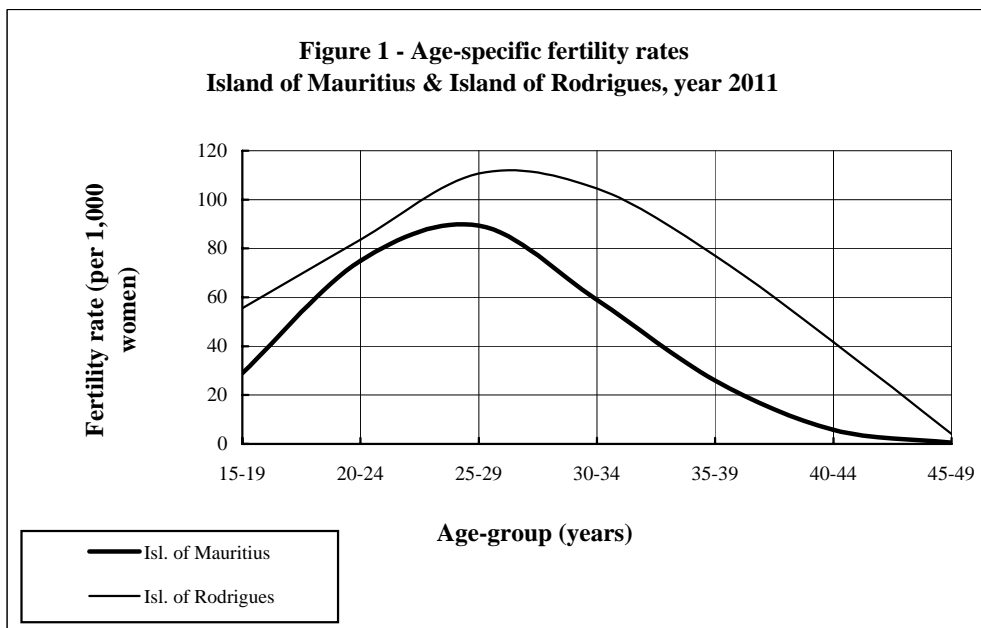
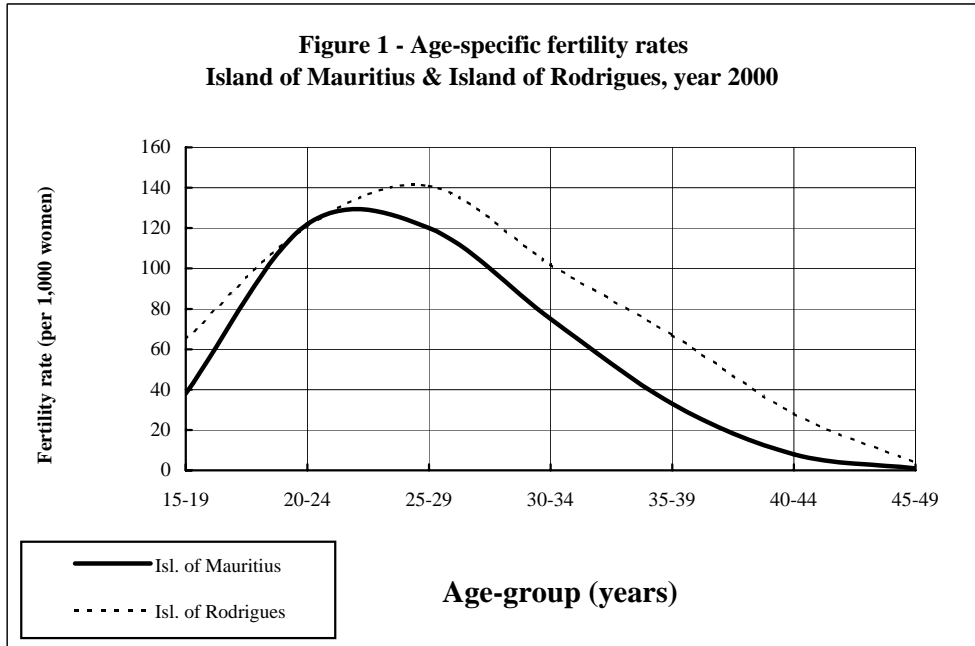
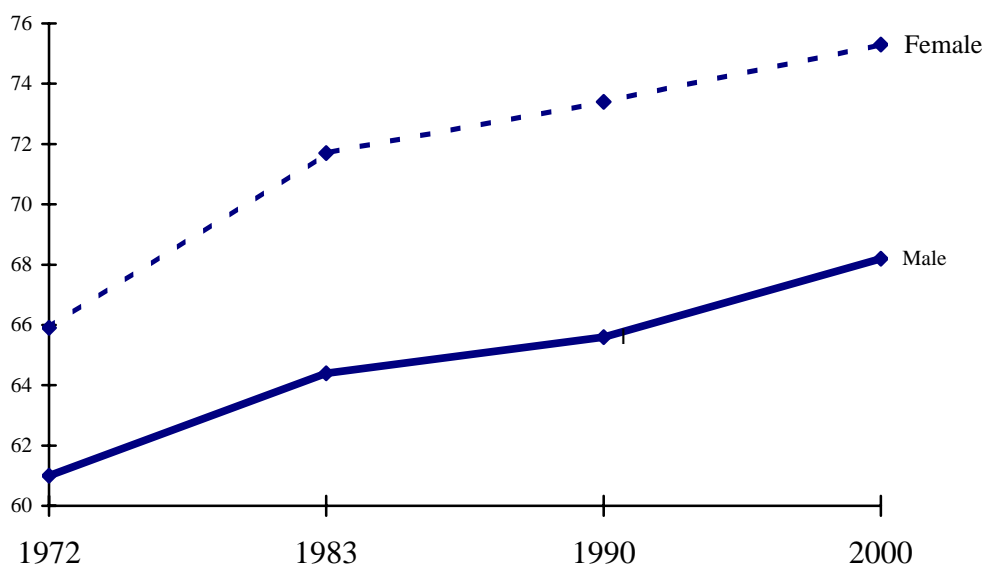


Table 2.7 - Life expectancy (years) at selected ages & sex, Republic of Mauritius, 2006 - 2010

Age-group (years)	2006		2007		2008		2009		2010	
	Male	Female	Male	Female	Male	Female	Male	Female	Male	Female
0	69.1	75.9	69.2	76.1	69.4	76.5	69.5	76.6	69.7	77.0
1	69.1	75.8	69.2	76.1	69.4	76.5	69.5	76.5	69.7	76.8
5	65.3	72.0	65.4	72.2	65.6	72.6	65.6	72.6	65.8	73.0
10	60.4	67.1	60.5	67.3	60.6	67.7	60.7	67.7	60.9	68.1
20	50.6	57.2	50.7	57.5	50.9	57.9	51.0	57.9	51.2	58.2
30	41.2	47.5	41.4	47.7	41.5	48.1	41.6	48.2	41.8	48.5
40	32.2	38.0	32.3	38.2	32.4	38.6	32.5	38.6	32.8	39.0
50	23.8	28.8	24.0	29.4	24.2	29.4	24.2	29.5	24.5	29.9
60	16.5	20.5	16.6	20.5	16.9	21.0	17.0	21.1	17.2	21.4

Figure 2 : Life expectancy at birth by sex, at each census, Republic of Mauritius, 1972 - 2000 Population Census



	1983	1990	2000	2011
Republic of Mauritius	99.3	99.9	98.3	97.6
Island of Mauritius	99.2	99.9	98.3	97.6
Island of Rodrigues	100.1	99.8	97.9	96.9

Table 3.1 - Number of deaths and death rates, Republic of Mauritius, 2006 - 2011

	2006			2007			2008			2009			2010			2011		
	Male	Female	Both Sexes	Male	Female	Both Sexes	Male	Female	Both Sexes	Male	Female	Both Sexes	Male	Female	Both Sexes	Male	Female	Both Sexes
Number of deaths	5,036	4,126	9,162	4,749	3,749	8,498	5,094	3,910	9,004	5,226	3,998	9,224	5,076	4,055	9,131	5,236	3,934	9,170
<i>of which:</i>																		
<i>Under 1 yr</i>	<i>138</i>	<i>111</i>	<i>249</i>	<i>138</i>	<i>123</i>	<i>261</i>	<i>138</i>	<i>98</i>	<i>236</i>	<i>124</i>	<i>91</i>	<i>215</i>	<i>106</i>	<i>81</i>	<i>187</i>	<i>102</i>	<i>87</i>	<i>189</i>
<i>Under 5 yrs</i>	<i>166</i>	<i>132</i>	<i>298</i>	<i>156</i>	<i>136</i>	<i>292</i>	<i>158</i>	<i>113</i>	<i>271</i>	<i>129</i>	<i>108</i>	<i>237</i>	<i>125</i>	<i>96</i>	<i>221</i>	<i>122</i>	<i>112</i>	<i>234</i>
<i>60 years and above</i>	2,981	3,059	6,040	2,668	2,722	5,390	2,927	2,867	5,794	2,968	2,968	5,936	2,926	2,983	5,909	3,083	2,939	6,022
Crude death rate (per 1,000 population)	8.1	6.5	7.3	7.6	5.9	6.7	8.1	6.1	7.1	8.3	6.2	7.2	8.0	6.2	7.1	8.3	6.0	7.1
Infant mortality rate (per 1,000 live births)	15.2	13.0	14.1	15.9	14.7	15.3	16.7	12.1	14.4	16.0	12.0	13.4	14.0	10.9	12.5	13.7	12.0	12.9
Under 5 mortality rate (per 1,000 live births)	18.3	15.5	16.9	18.0	16.3	17.1	19.1	13.9	16.6	16.6	14.2	15.4	16.5	12.9	14.7	16.4	15.4	15.9
Maternal mortality rate (per 1,000 live births)	- .	0.17	0.17	- .	0.36	0.36	- .	0.37	0.37	- .	0.65	0.65	- .	0.33	0.33	- .	0.34	0.34



HEALTH

Table 3.1a - Number of deaths and death rates, Island of Mauritius, 2006 - 2011

	2006			2007			2008			2009			2010			2011		
	Male	Female	Both Sexes	Male	Female	Both Sexes	Male	Female	Both Sexes	Male	Female	Both Sexes	Male	Female	Both Sexes	Male	Female	Both Sexes
Number of deaths	4,902	4,015	8,917	4,648	3,675	8,323	4,989	3,809	8,798	5,094	3,893	8,987	4,944	3,947	8,891	5,119	3,832	8,951
<i>of which:</i>																		
<i>Under 1 yr</i>	127	98	225	130	118	248	134	89	223	108	87	195	97	80	177	96	81	177
<i>Under 5 yrs</i>	154	116	270	148	131	279	154	102	256	129	108	237	114	95	209	116	103	219
<i>60 years and above</i>	2,900	2,984	5,884	2,608	2,665	5,273	2,861	2,793	5,654	2,886	2,890	5,776	2,846	2,903	5,749	3,000	2,869	5,869
Crude death rate (per 1,000 population)	8.2	6.5	7.3	7.7	5.9	6.8	8.2	6.1	7.1	8.3	6.2	7.3	8.1	6.3	7.2	8.3	6.1	7.2
Infant mortality rate (per 1,000 live births)	14.7	12.1	13.5	15.7	14.9	15.3	17.1	11.5	14.3	14.7	12.0	13.3	13.5	11.3	12.4	13.6	11.7	12.6
Under 5 mortality rate (per 1,000 live births)	17.8	14.3	16.1	17.9	16.5	17.2	19.6	13.2	16.1	17.5	14.9	16.2	15.8	13.4	14.6	16.4	14.9	15.6
Maternal mortality rate (per 1,000 live births)	- .	0.18	0.18	- .	0.37	0.37	- .	0.38	0.38	- .	0.68	0.68	- .	0.28	0.28	- .	0.36	0.36

Table 3.1b - Number of deaths and death rates, Island of Rodrigues, 2006 - 2011

	2006			2007			2008			2009			2010			2011		
	Male	Female	Both Sexes	Male	Female	Both Sexes	Male	Female	Both Sexes	Male	Female	Both Sexes	Male	Female	Both Sexes	Male	Female	Both Sexes
Number of deaths	134	111	245	101	74	175	105	101	206	132	105	237	132	108	240	117	102	219
<i>of which:</i>																		
<i>Under 1 yr</i>	11	13	24	8	5	13	4	9	13	6	4	10	9	1	10	6	6	12
<i>Under 5 yrs</i>	12	16	28	8	5	13	4	11	15	-	-	-	11	1	12	6	9	15
<i>60 years and above</i>	81	75	156	60	57	117	66	74	140	82	78	160	80	80	160	83	70	153
Crude death rate (per 1,000 population)	7.3	5.9	6.6	5.5	3.9	4.7	5.7	5.3	5.5	25.3	26.3	25.7	7.1	5.6	6.3	6.2	5.3	5.8
Infant mortality rate (per 1,000 live births)	24.3	30.3	27.2	19.4	11.6	15.4	10.1	23.3	16.6	15.0	12.5	13.9	25.1	2.8	14.0	16.5	17.9	17.2
Under 5 mortality rate (per 1,000 live births)	26.5	37.3	31.8	19.4	11.6	15.4	10.1	28.5	19.2	15.0	12.5	13.9	30.6	2.8	16.8	16.5	26.8	21.5
Maternal mortality rate (per 1,000 live births)	-.-	-	-	-.-	-	-	-.-	-	-	-.-	-	-	-.-	1.40	1.40	-.-	-	-

Table 3.2 - Number of deaths by cause, Republic of Mauritius, Island of Mauritius & Island of Rodrigues, 2011

	Republic of Mauritius			Island of Mauritius			Island of Rodrigues		
	Male	Female	Both Sexes	Male	Female	Both Sexes	Male	Female	Both Sexes
Number of deaths	5,236	3,934	9,170	5,119	3,832	8,951	117	102	219
<i>% due to:</i>									
Heart disease	17.4	17.3	17.3	17.3	17.3	17.3	22.3	16.7	19.6
Cerebrovascular disease	7.8	9.0	8.3	7.9	9.1	8.4	6.8	7.8	7.3
Diabetes mellitus	22.8	28.9	25.3	22.9	28.9	25.4	14.5	29.4	21.5
Cirrhosis of liver	3.5	0.8	2.4	3.6	0.8	2.4	0.9	2.0	1.4
Suicide	1.8	0.6	1.3	1.9	0.6	1.3	0.9	2.0	1.4
Malignant neoplasm of female breast	0.1	3.3	1.5	-. -	3.3	1.4	0.9	2.9	1.8
Malignant neoplasm of uterus	-. -	1.3	0.7	-. -	1.3	0.6	-. -	1.0	0.5
Malignant neoplasm of prostate	1.1	-. -	0.6	1.1	-. -	0.6	1.7	-. -	0.9
Complications of pregnancy & childbirth	-. -	0.1	0.1	-. -	0.1	0.1	-. -	-	-
Other	45.5	38.7	42.5	45.3	38.6	42.5	52.0	38.2	45.6
Total	100.0	100.0	100.0	100.0	100.0	100.0	100.0	100.0	100.0

Table 3.3 - Infant deaths by cause and sex, Republic of Mauritius, 2007 - 2011

	2007			2008			2009			2010			2011		
	Male	Female	Both Sexes	Male	Female	Both Sexes	Male	Female	Both Sexes	Male	Female	Both Sexes	Male	Female	Both Sexes
Infant deaths number due to	130	118	248	134	89	223	108	87	195	106	81	187	102	87	189
Slow fetal growth, fetal malnutrition and immaturity	6.1	16.1	10.9	6.7	4.5	5.8	4.6	9.2	6.7	3.8	8.7	5.9	3.9	8.0	5.8
Congenital anomalies	23.1	16.1	19.8	19.4	20.2	19.7	29.6	21.8	26.1	24.5	25.9	25.1	26.4	25.3	25.9
Respiratory disorders specific to the perinatal period	4.6	2.6	3.6	3.7	7.9	5.4	12.0	3.5	8.2	43.4	25.9	35.8	26.5	32.2	29.1
Septicaemia & infections specific to the perinatal period	10.0	5.9	8.0	12.7	10.1	11.7	10.2	11.5	10.8	3.8	3.7	3.8	11.8	3.4	7.9
Other	56.2	59.3	57.7	57.5	57.3	57.4	43.6	54.0	48.2	24.5	35.8	29.4	31.4	31.1	31.3
Total	100.0	100.0	100.0	100.0	100.0	100.0	100.0	100.0	100.0	100.0	100.0	100.0	100.0	100.0	100.0

Source: Ministry of Health & Quality of Life

Table 3.3a - Infant deaths by cause and sex, Island of Mauritius, 2007 - 2011

	2007			2008			2009			2010			2011		
	Male	Female	Both Sexes	Male	Female	Both Sexes	Male	Female	Both Sexes	Male	Female	Both Sexes	Male	Female	Both Sexes
Infant deaths	130	118	248	134	89	223	108	87	195	97	80	177	96	81	177
% due to:															
Slow fetal growth, fetal malnutrition and immaturity	6.1	16.1	10.9	6.7	4.5	5.8	4.6	9.2	6.7	4.1	8.8	6.2	4.2	8.6	6.2
Congenital anomalies	23.1	16.1	19.8	19.4	20.2	19.7	29.6	21.8	26.1	25.8	25.0	25.4	27.1	24.7	26.0
Respiratory failure	4.6	2.6	3.6	3.7	7.9	5.4	12.0	3.5	8.2	40.2	26.3	33.9	28.1	33.3	30.5
Septicaemia & infections specific to the perinatal period	10.0	5.9	8.0	12.7	10.1	11.7	10.2	11.5	10.8	3.1	3.8	3.4	12.5	2.5	7.9
Other	56.2	59.3	57.7	57.5	57.3	57.4	43.6	54.0	48.2	26.8	36.3	31.1	28.1	30.9	29.4
Total	100.0	100.0	100.0	100.0	100.0	100.0	100.0	100.0	100.0	100.0	100.2	100.0	100.0	100.0	100.0

Table 3.3b - Infant deaths by cause and sex, Island of Rodrigues, 2007 - 2011

	2007			2008			2009			2010			2011		
	Male	Female	Both Sexes	Male	Female	Both Sexes	Male	Female	Both Sexes	Male	Female	Both Sexes	Male	Female	Both Sexes
Infant deaths	8	5	13	4	9	13	6	4	10	9	1	10	6	6	12
% due to:															
Slow fetal growth, fetal malnutrition and immaturity	37.5	40.0	38.4	-	-	-	-	-	-	-	-	-	-	-	-
Congenital anomalies	25.0	-	15.4	-	33.3	23.1	33.3	-	20.0	11.1	100	20.0	16.7	33.3	25.0
Respiratory failure	25.0	20.0	23.1	50.0	11.1	23.1	50.0	-	30.0	77.8	-	70.0	83.3	33.3	58.3
Septicaemia & infections specific to the perinatal period	12.5	20.0	15.4	25.0	33.4	30.7	-	25.0	10.0	11.1	-	10.0	-	16.7	8.3
Other	-	20.0	7.7	25.0	22.2	23.1	16.7	75.0	40.0	-	-	-	-	16.7	8.4
Total	100.0	100.0	100.0	100.0	100.0	100.0	100.0	100.0	100.0	100.0	100.0	100.0	100.0	100.0	100.0

Source: Ministry of Health & Quality of Life

Table 3.4 - Infant deaths by selected age and sex, Republic of Mauritius, 2006 - 2011

	2006			2007			2008			2009			2010			2011		
	Male	Female	Both Sexes	Male	Female	Both Sexes	Male	Female	Both Sexes	Male	Female	Both Sexes	Male	Female	Both Sexes	Male	Female	Both Sexes
Total infant deaths	138	111	249	148	123	271	138	98	236	114	91	205	106	81	187	102	87	189
of which:																		
Under 1 day	19	16	35	26	20	46	19	11	30	16	7	23	22	13	35	9	16	25
Under 7 days	64	61	125	73	67	140	66	46	112	59	40	99	65	33	98	49	46	95
Under 28 days	103	83	186	101	86	187	91	61	152	81	60	141	84	46	130	79	64	143
1 month to 11 months	35	28	63	47	37	84	47	37	84	33	31	64	22	35	57	23	23	46

Table 3.4a - Infant deaths by selected age and sex, Island of Mauritius, 2006 - 2011

	2006			2007			2008			2009			2010			2011		
	Male	Female	Both Sexes	Male	Female	Both Sexes	Male	Female	Both Sexes	Male	Female	Both Sexes	Male	Female	Both Sexes	Male	Female	Both Sexes
Total infant deaths	127	98	225	140	118	258	134	89	223	108	87	195	97	80	177	96	81	177
of which:																		
Under 1 day	16	13	29	23	19	42	19	11	30	14	7	21	18	13	31	9	15	24
Under 7 days	60	52	112	67	65	132	65	41	106	55	38	93	57	32	89	44	41	85
Under 28 days	96	72	168	93	83	176	89	54	143	77	58	135	76	45	121	73	59	132
1 month to 11 months	31	26	57	47	35	82	45	35	80	31	29	60	21	35	56	23	22	45

Table 3.4b - Infant deaths by selected age and sex, Island of Rodrigues, 2006 - 2011

	2006			2007			2008			2009			2010			2011		
	Male	Female	Both Sexes	Male	Female	Both Sexes	Male	Female	Both Sexes	Male	Female	Both Sexes	Male	Female	Both Sexes	Male	Female	Both Sexes
Total infant deaths	11	4	15	8	5	13	4	9	13	6	4	10	9	1	10	6	6	12
of which:																		
Under 1 day	3	3	6	3	1	4	-	-	-	2	-	2	4	-	4	-	1	1
Under 7 days	4	9	13	6	2	8	1	5	6	4	2	6	8	1	9	5	5	10
Under 28 days	7	11	18	8	3	11	2	7	9	4	2	6	8	1	9	6	5	11
1 month to 11 months	4	2	6	-	2	2	2	2	4	2	2	4	1	-	1	0	1	1

Source: Ministry of Health & Quality of Life

Table 3.5 - Number and percentage^{1/} of current users of Family Planning Methods^{2/}, Republic of Mauritius, as at 31st December 2006 - 2011

Method	2006		2007		2008		2009		2010		2011	
	Number	%	Number	%	Number	%	Number	%	Number	%	Number	%
Pill	18,195	5.3	17,430	5.0	16,687	4.8	14,414	4.4	13,022	3.7	11,749	3.3
Barrier	19,016	5.5	19,324	5.6	19,563	5.6	19,201	5.9	12,544	3.6	10,102	2.9
Intra Uterine Device	4,938	1.4	4,957	1.4	4,880	1.4	4,363	1.3	4,019	1.1	2,819	0.8
Injectable	5,212	1.5	5,316	1.5	5,324	1.5	5,060	1.6	5,044	1.4	5,750	1.6
Sympto-Thermal	28,375	8.2	29,193	8.4	30,308	8.7	30,684	9.5	29,225	8.3	30,633	8.7
Tubal Ligation	17,431	5.0	17,291	5.0	17,299	4.9	16,977	5.2	15,790	4.5	15,147	4.3
Norplant	769	0.2	803	0.2	925	0.3	1,010	0.3	1,011	0.3	1,189	0.3
Total	93,936	27.1	94,314	27.1	94,986	27.2	91,709	28.3	80,655	22.9	77,389	22.0

^{1/} The percentage using the different methods is calculated as the number using the method as a percentage of women aged 15 - 49 years in the respective years.

^{2/} Figures refer to Government Programme, Mauritius Family Planning Association & Action Familiale.

Table 3.5a - Number and percentage^{1/} of current users of Family Planning Methods^{2/}, Island of Mauritius, as at 31st December 2007 - 2011

Method	2007		2008		2009		2010		2011	
	Number	%	Number	%	Number	%	Number	%	Number	%
Pill	14,653	4.3	13,920	4.1	12,144	3.6	10,752	3.1	9,438	2.8
Barrier	18,514	5.5	18,787	5.5	18,404	5.4	11,733	3.4	9,250	2.7
Intra Uterine Device	4,721	1.4	4,658	1.4	4,115	1.2	3,785	1.1	2,593	0.8
Injectable	3,963	1.2	3,996	1.2	3,876	1.1	3,948	1.2	4,659	1.4
Sympto-Thermal	27,807	8.2	28,907	8.5	29,246	8.6	27,806	8.1	29,317	8.6
Tubal Ligation	17,032	5.0	17,032	5.0	16,708	4.9	15,540	4.5	14,902	4.4
Norplant	803	0.2	925	0.3	1,010	0.3	969	0.3	1,114	0.3
Total	87,493	25.9	88,225	25.9	85,503	25.1	74,533	21.8	71,273	20.8

^{1/} The percentage using the different methods is calculated as the number using the method as a percentage of women aged 15 - 49 years in the respective years.

^{2/} Figures refer to Government Programme, Mauritius Family Planning Association & Action Familiale.

Source: Ministry of Health & Quality of Life

Table 3.5b - Number and percentage^{1/} of current users of Family Planning Methods^{2/}, Island of Rodrigues, as at 31st December 2007 - 2011

Method	2007		2008		2009		2010		2011	
	Number	%	Number	%	Number	%	Number	%	Number	%
Pill	2,777	28.5	2,767	28.4	2,270	23.3	2,270	23.4	2,311	23.9
Barrier	810	8.3	776	8.0	797	8.2	811	8.4	852	8.8
Intra Uterine Device	236	2.4	222	2.3	248	2.6	234	2.4	226	2.3
Injectable	1,353	13.9	1,328	13.6	1,184	12.2	1,096	11.3	1,091	11.3
Sympto-Thermal	1,386	14.2	1,401	14.4	1,438	14.8	1,419	14.7	1,316	13.6
Tubal Ligation	259	2.7	267	2.7	269	2.8	250	2.6	245	2.5
Norplant	-	-	-	-	-	-	42	0.4	75	0.8
Total	6,821	70.0	6,761	69.4	6,206	63.8	6,122	63.2	6,116	63.2

^{1/} The percentage using the different methods is calculated as the number using the method as a percentage of women aged 15 - 49 years in the respective years.

^{2/} Figures refer to Government Programme, Mauritius Family Planning Association & Action Familiale.

Source: Ministry of Health & Quality of Life

Table 3.6 - Immunisation coverage rate* (Government Services), 2009 - 2011

	Immunisation Coverage (%)					
	Island of Mauritius			Island of Rodrigues		
	2009	2010	2011	2009	2010	2011
BCG	88.9	88.4	88.0	100.0	100.9	95.7
DPT & Hepatitis (3 rd dose)/Polio	92.7	88.4	86.1	100.0	103.4	90.7
Polio (3rd dose)	93.4	89.1	86.8	100.0	100.0	90.7
MMR ¹	92.3	88.5	88.9	100.0	92.7	90.8
Tetanus [second or higher dose (pregnant women)]	82.2	79.5	75.5	89.0	81.9	74.6

NB: The relatively high percentages observed in Rodrigues are most probably due to return to Rodrigues of babies born in the Island of Mauritius.

- 40 -

Year	New cases of HIV/AIDS notified									Deaths registered among HIV/AIDS cases (Mauritian)		
	Mauritian			Non-Mauritian			Total			Male	Female	Both sexes
	Male	Female	Both sexes	Male	Female	Both sexes	Male	Female	Both sexes			
2009	436	112	548	6	1	7	442	113	555	35	4	39
2010	433	135	568	8	4	12	441	139	580	78	15	93
2011	298	103	401	10	6	16	308	109	417	79	13	92

* as a percentage of registered live births

¹ Measles/Mumps/Rubella

Source: Ministry of Health & Quality of Life



EDUCATION

Table 4.1 - Main indicators, Republic of Mauritius, 2007 - 2011

	2007	2008	2009	2010	2011
Pre-primary					
Number of schools	1,076	1,070	1,057	1,042	1,018
State	179	182	182	183	184
Private	826	817	803	797	763
RCEA	11	12	12	12	11
Municipal /Village Council	60	59	60	62	60
Enrolment	36,467	36,242	35,974	35,139	33,901
Male	18,362	18,263	18,097	17,991	17,282
Female	18,105	17,979	17,877	17,148	16,619
Number of teachers	2,513	2,541	2,518	2,538	2,550
Gross Enrolment Ratio (%)	94	94	96	96	97
Male	93	93	95	96	96
Female	94	95	97	96	98
Pupil/Teacher Ratio	15	14	14	14	13
Primary					
Number of schools	289	299	302	305	305
State	219	219	220	222	222
Private	70	80	82	83	83
Aided	53	53	53	57	53
Non-Aided	17	27	29	26	30
Enrolment	119,310	119,022	117,922	117,432	116,068
Male	60,641	60,693	59,948	59,672	58,935
Female	58,669	58,329	57,974	57,760	57,133
Number of teachers	5,548	5,495	5,454	5,472	5,627
Gross Enrolment Ratio (%)	101	101	101	101	100
Male	101	101	100	101	100
Female	101	101	101	101	100
Pupil/Teacher Ratio	28	29	29	28	27
Primary Completion Rate	70.7	70.1	69.2	73.8	71.5
Male	65.3	66.1	64.5	68.6	66.1
Female	76.3	74.0	74.0	79.2	77.2
Transition Rate (Primary to Secondary)	81	82	82	82	84
Certificate of Primary Education Pass Rate	66.2	67.4	68.1	68.5	68.6

Table 4.1 (c'td) - Main indicators, Republic of Mauritius, 2007 - 2011

	2007	2008	2009	2010	2011
Secondary (Academic)					
Number of schools	186	180	179	182	180
State	70	69	69	69	69
Private(Confessional, Private/Aided, NonAided)	116	111	110	113	111
Enrolment	116,706	116,503	116,226	115,003	115,289
Male	56,097	55,873	55,389	54,855	55,188
Female	60,609	60,630	60,837	60,148	60,101
Number of teachers	7,423	7,408	7,564	7,695	7,873
Gross Enrolment Ratio (%)	69	69	69	69	70
Male	65	65	65	65	66
Female	72	72	73	72	74
Pupil/Teacher Ratio	16	16	15	15	15
SC Pass rate	76.7	76.5	77.6	77.8	76.7
HSC Pass rate	77.8	78.7	78.8	78.3	79.3

Tertiary¹

Enrolment	35,023	38,623	41,484	44,334	45,969
Gross Enrolment Ratio (%)	37	41	43	45	45

¹Source: Tertiary Education Commission

Table 4.2 - Government expenditure on education, Republic of Mauritius, 2006 - 2011

	2006/2007	2007/2008	2008/2009	2010	2011
Total Government Expenditure (Rs million)	56,315.0	61,544.0	76,215.2	79,894.1	87,816.2
Total Government Expenditure on Education (Rs million)	7,606.7	8,326.8	10,625.0	10,936.8	11,017.4
Total Government Expenditure on Education as a % of GDP at market prices	3.5	3.3	3.9	3.7	3.4
Total Government Expenditure on Education as a % of Total Government Expenditure	13.5	13.5	13.9	13.7	12.5

Table 4.3 - Total enrolment and percentage enrolment by level & sex, Republic of Mauritius, 2006 - 2011

	2006			2007			2008			2009			2010			2011		
	Male	Female	Both Sexes	Male	Female	Both Sexes	Male	Female	Both Sexes	Male	Female	Both Sexes	Male	Female	Both Sexes	Male	Female	Both Sexes
Pre-primary	50.4	49.6	37,129	50.4	49.6	36,467	50.4	49.6	36,242	50.3	49.7	35,974	51.2	48.8	35,139	51.0	49.0	33,901
Primary	50.8	49.2	121,387	50.8	49.2	119,310	51.0	49.0	119,022	50.8	49.2	117,922	50.8	49.2	117,432	50.8	49.2	116,068
Secondary	48.1	51.9	114,657	48.1	51.9	116,706	48.0	52.0	116,503	47.7	52.3	116,226	47.7	52.3	115,003	47.9	52.1	115,289
Tertiary (local)	47.1	52.9	16,773	42.1	57.9	18,224	42.2	57.8	18,466	43.8	56.2	21,569	39.1	60.9	26,219	39.8	60.2	23,568

Table 4.3a - Total enrolment and percentage enrolment by level & sex, Island of Mauritius, 2006 - 2011

	2006			2007			2008			2009			2010			2011		
	Male	Female	Both Sexes	Male	Female	Both Sexes	Male	Female	Both Sexes	Male	Female	Both Sexes	Male	Female	Both Sexes	Male	Female	Both Sexes
Pre-primary	50.4	49.6	35,786	50.4	49.6	35,130	50.4	49.6	34,835	50.3	49.7	34,288	50.8	49.2	33,562	51.2	48.8	32,332
Primary	50.8	49.2	116,513	50.8	49.2	114,404	51.0	49.0	114,007	50.8	49.2	112,884	50.8	49.2	112,309	50.7	49.3	110,907
Secondary	48.1	51.9	111,027	48.1	51.9	112,981	48.0	52.0	112,995	47.7	52.3	112,572	47.7	52.3	111,418	47.9	52.1	111,753

Table 4.3b - Total enrolment and percentage enrolment by level & sex, Island of Rodrigues, 2006 - 2011

	2006			2007			2008			2009			2010			2011		
	Male	Female	Both Sexes	Male	Female	Both Sexes	Male	Female	Both Sexes	Male	Female	Both Sexes	Male	Female	Both Sexes	Male	Female	Both Sexes
Pre-primary	51.3	48.7	1,343	48.3	51.7	1,337	50.1	49.9	1,407	50.1	49.9	1,686	50.5	49.5	1,577	49.7	50.3	1,569
Primary	50.4	49.6	4,874	51.0	49.0	4,906	51.1	48.9	5,015	51.2	48.8	5,038	50.8	49.2	5,123	51.8	48.2	5,161
Secondary	46.4	53.6	3,630	46.0	54.0	3,725	45.8	54.2	3,508	46.3	53.7	3,654	46.2	53.8	3,585	46.4	53.6	3,536

Table 4.4 - Enrolment in pre-primary, primary & secondary schools by standard/form & sex, Republic of Mauritius, 2009 - 2011

Standard / Form	2009			2010			2011		
	Male	Female	Both sexes	Male	Female	Both sexes	Male	Female	Both sexes
Preprimary	18,097	17,877	35,974	17,991	17,148	35,139	17,282	16,619	33,901
Primary Level	59,948	57,974	117,922	59,672	57,760	117,432	58,935	57,133	116,068
Std I	9,452	9,161	18,613	9,228	9,202	18,430	9,147	8,965	18,112
Std II	9,604	9,517	19,121	9,388	9,094	18,482	9,273	9,192	18,465
Std III	9,513	9,442	18,955	9,605	9,482	19,087	9,401	9,161	18,562
Std IV	9,759	9,570	19,329	9,462	9,350	18,812	9,602	9,427	19,029
Std V	9,805	9,505	19,310	9,763	9,494	19,257	9,378	9,322	18,700
Std VI	9,250	9,032	18,282	9,776	9,497	19,273	9,685	9,409	19,094
Std VI (Repeaters)	2,565	1,747	4,312	2,450	1,641	4,091	2,449	1,657	4,106
Std VI (inc.repeaters)	11,815	10,779	22,594	12,226	11,138	23,364	12,134	11,066	23,200
Secondary level	55,389	60,837	116,226	54,855	60,148	115,003	55,188	60,101	115,289
Form I	8,197	8,612	16,809	7,894	8,346	16,240	8,322	8,602	16,924
Form II	8,210	9,036	17,246	8,222	8,808	17,030	7,963	8,410	16,373
Form III	8,980	9,652	18,632	8,382	9,186	17,568	8,461	8,881	17,342
Form IV	9,968	10,387	20,355	9,955	10,567	20,522	9,405	10,068	19,473
Form V	10,151	10,929	21,080	10,397	10,765	21,162	10,178	10,664	20,842
Form VI Lower	4,904	6,231	11,135	4,994	6,269	11,263	5,533	6,977	12,510
Form VI Upper	4,979	5,990	10,969	5,011	6,207	11,218	5,326	6,499	11,825
Form VI L - VI U	9,883	12,221	22,104	10,005	12,476	22,481	10,859	13,476	24,335
Secondary level Prevocational	5,114	2,919	8,033	4,764	2,678	7,442	4,635	2,635	7,270
Year I	1,889	1,092	2,981	1,736	955	2,691	1,589	955	2,544
Year II	1,655	957	2,612	1,654	935	2,589	1,576	833	2,409
Year III	1,570	870	2,440	1,374	788	2,162	1,470	847	2,317
Enrolment in private schools									
Preprimary level	14,826	14,639	29,465	14,790	13,990	28,780	14,024	13,408	27,432
Primary level	16,207	15,918	32,125	16,358	15,940	32,298	16,360	16,206	32,566
Secondary level	32,411	35,254	67,665	31,746	34,199	65,945	31,859	33,725	65,584
Enrolment in state schools									
Preprimary level	3,271	3,238	6,509	3,201	3,158	6,359	3,258	3,211	6,469
Primary level	43,741	42,056	85,797	43,314	41,820	85,134	42,575	40,927	83,502
Secondary level	22,978	25,583	48,561	23,109	25,949	49,058	23,329	26,376	49,705

Table 4.5 - Enrolment & pass rates by sex, Republic of Mauritius, 2005 - 2011

	2005			2006			2007			2008			2009			2010			2011		
	Male	Female	Both Sexes	Male	Female	Both Sexes	Male	Female	Both Sexes	Male	Female	Both Sexes	Male	Female	Both Sexes	Male	Female	Both Sexes	Male	Female	Both Sexes
Enrolment rate																					
Primary	103	102	102	102	101	101	101	101	101	101	101	101	100	101	101	100	101	101	100	100	100
Secondary	64	71	67	65	72	69	65	72	69	65	72	69	65	73	69	65	72	69	66	74	70
Pass rate (%)																					
CPE	59.0	71.2	64.9	62.0	74.3	67.9	60.1	72.7	66.2	62.1	73.2	67.4	62.3	74.5	68.1	63.1	74.4	68.5	62.7	74.9	68.6
SC	75.2	81.2	78.4	74.5	82.8	78.9	71.7	81.2	76.7	71.5	80.9	76.5	71.8	82.7	77.6	73.3	81.8	77.8	71.8	81.2	76.7
HSC	73.6	82.0	78.2	74.9	83.1	79.3	72.9	81.8	77.8	74.4	82.2	78.7	74.2	82.1	78.8	73.7	81.7	78.3	75.3	82.3	79.3

Table 4.5a - Enrolment & pass rates by sex, Island of Mauritius, 2005 - 2011

	2005			2006			2007			2008			2009			2010			2011		
	Male	Female	Both Sexes	Male	Female	Both Sexes	Male	Female	Both Sexes	Male	Female	Both Sexes	Male	Female	Both Sexes	Male	Female	Both Sexes	Male	Female	Both Sexes
Enrolment rate																					
Primary	102	102	102	101	101	101	100	100	100	101	100	101	100	100	100	100	101	100	100	100	100
Secondary	64	71	68	66	72	69	66	73	69	65	72	69	65	73	69	65	73	69	66	74	70
Pass rate (%)																					
CPE	59.3	71.6	65.3	62.7	74.7	68.5	60.8	73.3	66.9	62.6	73.8	68.0	62.9	74.8	68.6	63.5	74.6	68.8	63.0	75.1	68.8
SC	75.8	81.9	79.0	74.5	83.4	79.2	71.8	81.3	76.8	71.5	81.2	76.7	71.9	82.9	77.8	73.3	82.2	78.0	71.6	81.2	76.7
HSC	73.6	81.9	78.2	74.9	83.3	79.4	72.8	82.2	77.9	74.6	82.3	78.9	74.5	82.3	78.9	74.0	81.8	78.5	75.1	82.3	79.2

- 45 -

Table 4.5b - Enrolment & pass rates by sex, Island of Rodrigues, 2005 - 2011

	2005			2006			2007			2008			2009			2010			2011		
	Male	Female	Both Sexes	Male	Female	Both Sexes	Male	Female	Both Sexes	Male	Female	Both Sexes	Male	Female	Both Sexes	Male	Female	Both Sexes	Male	Female	Both Sexes
Enrolment rate																					
Primary	115	114	114	116	112	114	115	112	114	114	114	114	110	111	110	110	111	110	105	105	105
Secondary	54	63	58	56	66	61	58	68	63	56	65	60	60	69	64	61	68	64	62	69	65
Pass rate (%)																					
CPE	50.5	61.4	55.9	46.7	63.8	55.1	42.0	57.8	49.8	50.0	61.0	55.2	49.6	65.7	57.1	54.1	70.6	61.7	56.2	69.9	62.7
SC	58.7	62.7	60.9	73.4	67.9	70.4	69.8	77.9	74.2	71.4	71.7	71.6	70.4	76.3	73.8	73.7	72.0	72.8	78.2	79.2	78.8
HSC	72.4	82.6	78.0	75.0	73.9	74.3	78.0	69.3	73.1	69.6	77.6	73.9	67.8	76.7	72.8	69.2	81.6	76.1	81.4	83.1	82.4

Table 4.6 - Number of teachers in primary and secondary schools, Republic of Mauritius, 2005 - 2011

Year	Primary Schools				Secondary Schools			
	Male	Female	Both Sexes	% Female	Male	Female	Both Sexes	% Female
2005	2,064	3,467	5,531	62.7	3,082	3,703	6,785	54.6
2006	1,994	3,604	5,598	64.4	3,148	3,931	7,079	55.5
2007	1,958	3,590	5,548	64.7	3,278	4,145	7,423	55.8
2008	1,844	3,651	5,495	66.4	3,209	4,199	7,408	56.7
2009	1,744	3,710	5,454	68.0	3,256	4,308	7,564	57.0
2010	1,650	3,822	5,472	69.8	3,269	4,426	7,695	57.5
2011	1,655	3,559	5,214	68.3	3,258	4,615	7,873	58.6

Table 4.6a - Number of teachers in primary and secondary schools, Island of Mauritius, 2005 - 2011

Year	Primary Schools				Secondary Schools			
	Male	Female	Both Sexes	% Female	Male	Female	Both Sexes	% Female
2005	1,977	3,345	5,322	62.9	2,995	3,613	6,608	54.7
2006	1,910	3,485	5,395	64.6	3,051	3,825	6,876	55.6
2007	1,877	3,474	5,351	64.9	3,176	4,037	7,213	56.0
2008	1,762	3,537	5,299	66.7	3,112	4,085	7,197	56.8
2009	1,655	3,587	5,242	68.4	3,158	4,197	7,355	57.1
2010	1,564	3,697	5,261	70.3	3,174	4,316	7,490	57.6
2011	1,567	3,919	5,486	71.4	3,162	4,496	7,658	58.7

Table 4.6b - Number of teachers in primary and secondary schools, Island of Rodrigues, 2005 - 2011

Year	Primary Schools				Secondary Schools			
	Male	Female	Both Sexes	% Female	Male	Female	Both Sexes	% Female
2005	87	122	209	58.4	87	90	177	50.8
2006	84	119	203	58.6	97	106	203	52.2
2007	81	116	197	58.9	102	108	210	51.4
2008	82	114	196	58.2	97	114	211	54.0
2009	89	123	212	58.0	98	111	209	53.1
2010	86	125	211	59.2	95	110	205	53.7
2011	88	127	215	59.1	96	119	215	55.3

**Table 4.7 - Percentage distribution of population 15 years & above by educational attainment & sex,
Republic of Mauritius, 1990 & 2000 Population Censuses**

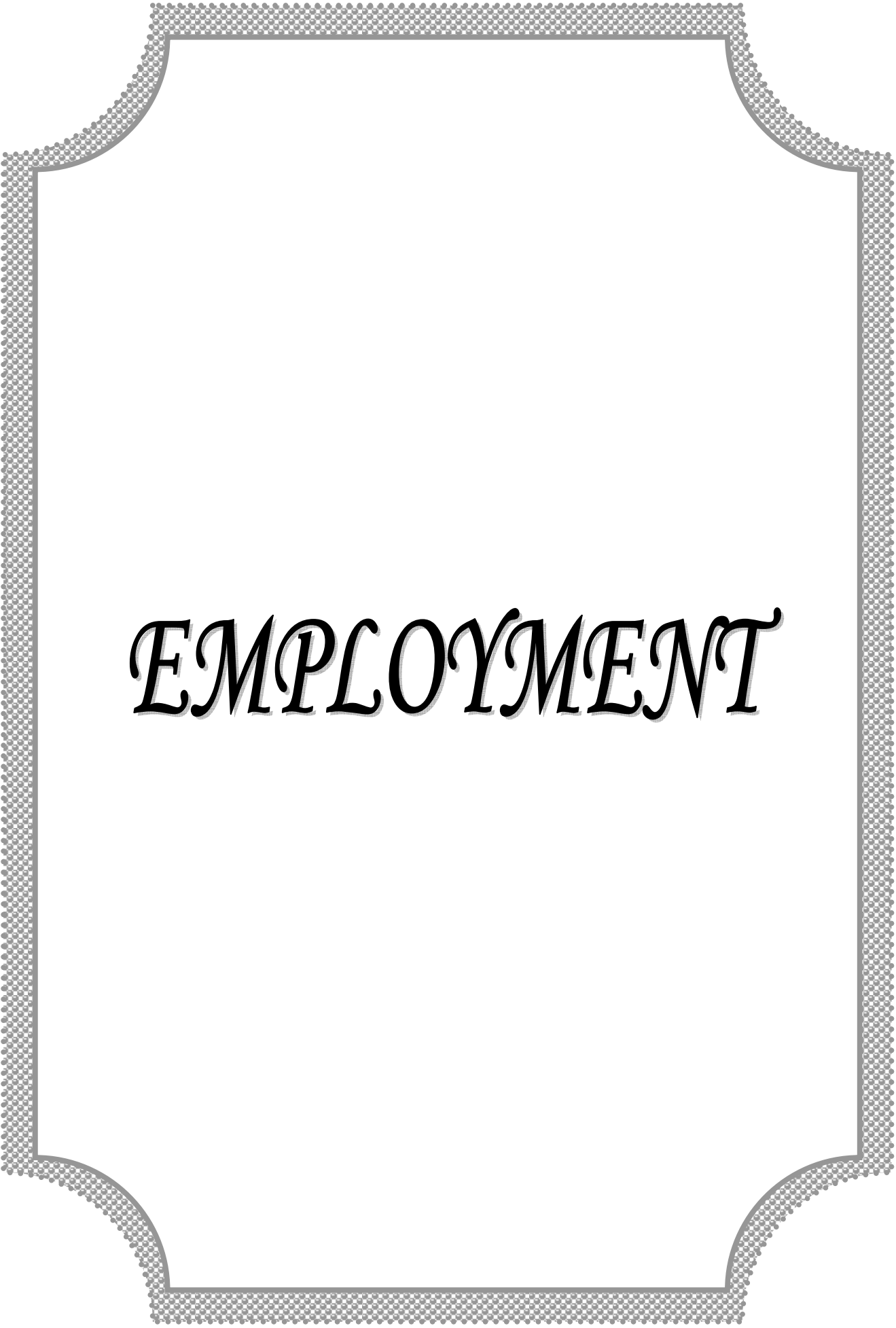
Educational attainment	1990			2000		
	Male	Female	Both sexes	Male	Female	Both sexes
Population (15 years & above) (‘000)	346.8	354.5	701.3	431.3	445.7	877.0
Nil & pre-primary	8.6	20.6	14.7	5.3	13.6	9.6
Primary	48.5	47.4	47.9	40.2	40.3	40.2
<i>of which:</i>						
<i>Lower primary</i>	42.7	41.3	42.0	35.1	35.1	35.1
<i>Passed CPE</i>	5.7	6.0	5.9	5.1	5.2	5.1
Secondary	40.7	31.3	36.0	51.4	44.7	48.0
<i>of which:</i>						
<i>Form I - III</i>	9.8	8.0	8.9	10.5	9.3	9.9
<i>Form IV & V</i>	14.9	11.4	13.1	19.3	16.4	17.8
<i>Passed SC or equivalent</i>	12.2	9.3	10.7	14.6	12.6	13.6
<i>Passed HSC or equivalent</i>	3.7	2.7	3.2	7.0	6.4	6.7
University degree or equivalent	2.2	0.7	1.5	3.1	1.4	2.2
Total	100.0	100.0	100.0	100.0	100.0	100.0

**Table 4.7a - Percentage distribution of population 15 years and above by educational attainment & sex,
Island of Mauritius, 1990 & 2000 Population Censuses**

Educational attainment	1990			2000		
	Male	Female	Both sexes	Male	Female	Both sexes
Population (15 years & above) ('000)	337.1	344.7	681.8	419.2	433.2	852.4
Nil & pre-primary	8.3	20.6	14.5	5.7	13.6	9.8
Primary	47.9	46.8	47.3	39.3	39.7	39.5
<i>of which:</i>						
<i>Lower primary</i>	42.2	40.8	41.5	34.3	34.6	34.4
<i>Passed CPE</i>	5.7	6.0	5.8	5.0	5.1	5.1
Secondary	41.5	31.9	36.7	51.8	45.3	48.4
<i>of which:</i>						
<i>Form I - III</i>	9.9	8.1	9.0	10.5	9.4	9.9
<i>Form IV & V</i>	15.3	11.6	13.4	19.5	16.5	18.0
<i>Passed SC or equivalent</i>	12.5	9.5	11.0	14.7	12.8	13.7
<i>Passed HSC or equivalent</i>	3.8	2.8	3.3	7.1	6.6	6.8
University degree or equivalent	2.3	0.7	1.5	3.2	1.4	2.3
Total	100.0	100.0	100.0	100.0	100.0	100.0

**Table 4.7b - Percentage distribution of population 15 years and above by educational attainment & sex,
Island of Rodrigues, 1990 & 2000 Population Censuses**

Educational attainment	1990			2000		
	Male	Female	Both sexes	Male	Female	Both sexes
Population (15 years & above) ('000)	9.7	9.9	19.6	12.1	12.5	24.6
Nil & pre-primary	18.4	21.0	19.7	11.5	14.0	12.7
Primary	68.0	67.8	67.9	60.9	59.8	60.4
<i>of which:</i>						
<i>Lower primary</i>	60.3	59.6	60.0	54.6	53.5	54.1
<i>Passed CPE</i>	7.7	8.1	7.9	6.3	6.3	6.3
Secondary	13.4	11.2	12.3	27.0	25.9	27.0
<i>of which:</i>						
<i>Form I - III</i>	5.3	4.8	5.1	7.1	6.5	7.1
<i>Form IV & V</i>	3.7	2.9	3.3	10.4	11.1	10.4
<i>Passed SC or equivalent</i>	3.7	3.1	3.4	7.8	6.8	7.8
<i>Passed HSC or equivalent</i>	0.6	0.4	0.5	1.7	1.5	1.7
University degree or equivalent	0.2	0.0	0.1	0.6	0.3	0.6
Total	100.0	100.0	100.0	100.0	100.0	100.0



EMPLOYMENT

Table 5.1 - Percentage distribution of the population aged 16 years and over by activity status & sex, Republic of Mauritius, 2006 - 2011

Activity status	2006			2007			2008			2009			2010			2011		
	Male	Female	Both sexes	Male	Female	Both sexes	Male	Female	Both sexes	Male	Female	Both sexes	Male	Female	Both sexes	Male	Female	Both sexes
Employed	73.5	35.6	54.2	73.1	35.3	53.9	73.4	37.0	54.9	72.7	37.4	54.7	72.6	38.5	55.2	71.6	38.3	54.6
Unemployed	4.2	6.6	5.4	4.1	5.9	5.0	3.1	5.4	4.3	3.4	5.3	4.3	3.5	5.7	4.6	3.9	5.5	4.7
Not economically active	22.3	57.8	40.4	22.8	58.8	41.1	23.5	57.6	40.8	23.9	57.3	41.0	23.9	55.8	40.2	24.5	56.2	40.7
of whom:																		
<i>Homemakers</i>	<i>0.1</i>	<i>32.6</i>	<i>16.6</i>	<i>0.1</i>	<i>33.9</i>	<i>17.3</i>	<i>0.1</i>	<i>36.6</i>	<i>18.7</i>	<i>0.1</i>	<i>36.5</i>	<i>18.6</i>	<i>0.1</i>	<i>33.8</i>	<i>17.3</i>	<i>0.1</i>	<i>31.4</i>	<i>16.1</i>
<i>Students</i>	<i>8.4</i>	<i>7.2</i>	<i>7.8</i>	<i>9.1</i>	<i>8.2</i>	<i>8.7</i>	<i>9.5</i>	<i>8.0</i>	<i>8.7</i>	<i>9.8</i>	<i>8.7</i>	<i>9.2</i>	<i>9.5</i>	<i>8.8</i>	<i>9.1</i>	<i>9.4</i>	<i>9.0</i>	<i>9.2</i>
<i>Retired/old persons/ other</i>	<i>13.8</i>	<i>18.0</i>	<i>16.0</i>	<i>13.6</i>	<i>16.7</i>	<i>15.0</i>	<i>13.9</i>	<i>13.0</i>	<i>13.4</i>	<i>14.0</i>	<i>12.1</i>	<i>13.2</i>	<i>14.3</i>	<i>13.2</i>	<i>13.6</i>	<i>15.1</i>	<i>15.9</i>	<i>15.5</i>
Total	100.0	100.0	100.0	100.0	100.0	100.0	100.0	100.0	100.0	100.0	100.0	100.0	100.0	100.0	100.0	100.0	100.0	100.0

Table 5.2 - Percentage distribution of the employed population aged 16 years and over by major occupational group & sex, Republic of Mauritius, 2006 - 2011

Occupation	2006			2007			2008			2009			2010			2011		
	Male	Female	Both sexes	Male	Female	Both sexes	Male	Female	Both sexes	Male	Female	Both sexes	Male	Female	Both sexes	Male	Female	Both sexes
Legislators, senior officials and managers	3.7	1.3	2.9	3.6	1.8	3.0	3.3	1.9	2.9	3.3	2.1	2.9	3.6	2.3	3.1	4.4	2.7	3.8
Professionals, associate professionals & technicians	11.0	16.3	12.8	10.4	17.2	12.7	10.9	17.0	13.0	11.8	17.1	13.7	12.3	18.4	14.5	12.5	18.3	14.6
Clerks	5.5	16.2	9.0	5.6	16.3	9.2	5.9	16.9	9.6	6.0	16.9	9.8	6.7	16.5	10.2	6.4	17.7	10.4
Service & sales workers	17.8	20.3	18.7	17.5	21.2	18.7	17.5	21.2	18.7	17.8	21.6	19.1	17.8	22.1	19.3	18.2	21.9	19.5
Skilled agricultural workers	4.8	2.4	4.0	4.4	2.4	3.7	4.9	3.0	4.3	5.2	2.6	4.3	5.6	2.9	4.6	5.2	2.6	4.2
Craft workers, plant & machine operators	37.5	19.7	31.5	39.5	17.9	32.3	39.0	17.1	31.5	37.9	16.8	30.5	37.1	15.1	29.3	36.1	13.6	28.1
Elementary Occupations	19.7	23.8	21.1	19.0	23.2	20.4	18.5	22.9	20.0	18.0	22.9	19.7	16.9	22.7	19.0	17.2	23.2	19.4
Total	100.0	100.0	100.0	100.0	100.0	100.0	100.0	100.0	100.0	100.0	100.0	100.0	100.0	100.0	100.0	100.0	100.0	100.0

Table 5.3 - Percentage distribution of the employed population aged 16 years and over by industrial sector and sex, Republic of Mauritius, 2006 - 2011

Industrial sector	2006			2007			2008			2009			2010			2011		
	Male	Female	Both sexes	Male	Female	Both sexes	Male	Female	Both sexes	Male	Female	Both sexes	Male	Female	Both sexes	Male	Female	Both sexes
Primary	10.6	8.1	9.7	10.0	7.7	9.2	9.8	7.6	9.0	9.5	8.1	9.0	9.1	7.5	8.5	9.2	6.7	8.3
Secondary	34.5	27.3	32.1	35.7	25.9	32.4	35.0	25.2	31.7	32.9	23.6	29.7	32.8	21.5	28.8	32.3	21.1	28.2
Tertiary	54.9	64.6	58.2	54.3	66.4	58.4	55.2	67.2	59.3	57.6	68.3	61.3	58.1	71.0	62.7	58.5	72.2	63.5
Total	100.0	100.0	100.0	100.0	100.0	100.0	100.0	100.0	100.0	100.0	100.0	100.0	100.0	100.0	100.0	100.0	100.0	100.0

Primary: Agriculture and mining

Secondary: Manufacturing, gas, electricity, water supply and construction

Tertiary: All other service industries

Table 5.4 - Percentage number of income earners by monthly income range and sex, Republic of Mauritius, 2006 - 2011

Monthly income range (Rs)	2006			2007			2008			2009			2010			2011		
	Male	Female	Both sexes	Male	Female	Both sexes	Male	Female	Both sexes	Male	Female	Both sexes	Male	Female	Both sexes	Male	Female	Both sexes
Up to 2,000	3.8	13.4	6.9	3.0	12.0	5.9	2.3	9.8	4.8	2.2	8.6	4.3	2.4	8.1	4.5	3.6	11.8	6.5
2,001 - 4,000	9.8	29.0	16.0	7.7	25.7	13.5	6.2	23.3	11.9	5.3	21.6	10.8	4.2	18.1	9.4	4.3	16.9	8.8
4,001 - 6,000	18.8	18.7	18.8	17.3	19.0	17.8	13.6	20.4	15.8	11.9	20.0	14.6	9.8	19.2	13.2	8.8	17.9	12.0
6,001 - 8,000	20.5	11.2	17.5	21.2	12.3	18.3	19.8	12.0	17.2	16.4	11.2	14.7	14.6	12.7	13.9	14.1	12.0	13.3
8,001 - 10,000	15.1	9.0	13.1	16.0	9.6	13.9	16.4	9.6	14.2	16.2	9.3	13.9	15.4	8.9	13.0	16.2	8.5	13.5
10,001 - 15,000	15.0	8.9	13.0	16.6	10.6	14.7	19.7	10.6	16.7	21.5	10.9	17.9	22.7	12.2	18.8	21.5	11.9	18.1
15,001 - 20,000	8.0	5.8	7.3	8.7	6.1	7.9	9.3	6.8	8.5	9.7	6.9	8.7	11.3	7.1	9.7	10.9	6.9	9.5
20,001 - 30,000	5.3	2.7	4.5	5.5	3.0	4.7	7.4	5.0	6.6	9.3	8.2	8.9	10.6	9.5	10.2	10.2	8.0	9.4
30,001 and above	3.7	1.3	2.9	4.0	1.7	3.3	5.3	2.5	4.3	7.4	3.4	6.1	9.1	4.1	7.2	10.3	6.1	8.8
Total	100.0	100.0	100.0	100.0	100.0	100.0	100.0	100.0	100.0	100.0	100.0	100.0	100.0	100.0	100.0	100.0	100.0	100.0
Average monthly income per income earner (Rs)	10,660	6,906	9,453	11,105	7,480	9,950	12,560	8,350	11,180	14,430	9,460	12,760	15,700	10,500	13,900	16,400	11,000	14,500

Table 5.5 - Employment in Government Services¹ by occupation & sex, Republic of Mauritius, 2007 - 2011

Occupation	2007			2008			2009			2010			2011		
	Male	Female	Both Sexes	Male	Female	Both Sexes	Male	Female	Both Sexes	Male	Female	Both Sexes	Male	Female	Both Sexes
Total Government Services	44,561	18,533	63,094	46,563	19,408	65,971	45,072	19,363	64,435	43,917	19,486	63,403	41,617	19,972	61,589
<i>Legislators, Senior Officials & Managers</i>	<i>1,218</i>	<i>801</i>	<i>2,019</i>	<i>1,295</i>	<i>720</i>	<i>2,015</i>	<i>1,533</i>	<i>888</i>	<i>2,421</i>	<i>1,472</i>	<i>903</i>	<i>2,375</i>	<i>1,511</i>	<i>945</i>	<i>2,456</i>
<i>of whom as:</i>															
Senior Chief Executive	3	2	5	1	2	3	-	1	1	-	1	1	1	2	3
Permanent Secretary	18	9	27	17	9	26	20	8	28	13	7	20	15	6	21
Principal Assistant Secretary	33	23	56	37	21	58	41	24	65	42	22	64	40	21	61
Director/Manager	132	73	205	131	73	204	248	109	357	201	119	320	190	98	288
Rector & Principal	60	35	95	57	31	88	52	27	79	48	26	74	65	38	103
Headteacher & Deputy															
Headteacher	525	527	1,052	591	458	1,049	588	518	1,106	623	541	1,164	624	562	1,186
Ambassador	18	3	21	19	3	22	18	3	21	17	3	20	13	3	16
First Secretary	19	4	23	20	4	24	19	4	23	19	4	23	16	4	20
Second Secretary	28	16	44	24	16	40	27	16	43	28	16	44	27		27
<i>Professionals</i>	<i>2,868</i>	<i>2,128</i>	<i>4,996</i>	<i>2,745</i>	<i>2,105</i>	<i>4,850</i>	<i>2,809</i>	<i>2,143</i>	<i>4,952</i>	<i>3,241</i>	<i>2,286</i>	<i>5,527</i>	<i>3,090</i>	<i>2,162</i>	<i>5,252</i>
<i>of whom as:</i>															
Education Officer	1,126	1,552	2,678	1,107	1,488	2,595	1,091	1,488	2,579	1,351	1,518	2,869	1,276	1,409	2,685
Medical Doctor	641	202	843	586	202	788	645	214	859	600	254	854	551	243	794
Dentist	41	17	58	43	21	64	40	20	60	44	26	70	41	24	65
Analyst/Programmer	30	47	77	27	40	67	27	45	72	29	46	75	35	49	84
Scientific Officer	33	13	46	35	13	48	52	28	80	59	34	93	59	30	89
Engineer	93	5	98	98	6	104	57	2	59	95	6	101	93	9	102
Pharmacist	13	8	21	11	13	24	13	12	25	16	7	23	13	8	21
Judge	7	5	12	6	6	12	9	9	18	10	8	18	12	8	20
Magistrate	14	25	39	17	25	42	16	26	42	18	27	45	15	26	41
Statistician	18	10	28	22	15	37	20	15	35	18	12	30	18	12	30
Accountant & Auditor	45	28	73	45	35	80	42	35	77	39	34	73	45	35	80

Employment data includes both Central & Local governments

¹ includes those on acting appointment

Table 5.5 ctd/... - Employment in Government Services¹ by occupation & sex , Republic of Mauritius, 2007 - 2011

Occupation	2007			2008			2009			2010			2011		
	Male	Female	Both Sexes	Male	Female	Both Sexes	Male	Female	Both Sexes	Male	Female	Both Sexes	Male	Female	Both Sexes
Technicians & Associate Professionals	9,054	9,383	18,437	8,854	9,332	18,186	8,709	9,300	18,009	7,945	9,112	17,057	8,014	9,690	17,704
<i>of whom as:</i>															
Teacher & Senior Teacher	1,739	3,101	4,840	1,679	3,154	4,833	1,552	3,137	4,689	1,465	2,944	4,409	1,395	3,270	4,665
Nursing Officer, Midwife & Student Nurse	1,486	2,203	3,689	1,562	2,034	3,596	1,388	1,998	3,386	1,388	2,024	3,412	1,405	2,026	3,431
Community Health Worker	51	179	230	30	145	175	40	156	196	39	144	183	44	53	97
Assistant Secretary	56	66	122	60	75	135	50	62	112	53	63	116	47	62	109
Technical Officer & Technician	199	67	266	157	63	220	172	72	244	168	77	245	154	86	240
Dispenser	168	52	220	177	72	249	197	73	270	307	127	434	311	127	438
Labour Inspector	45	31	76	43	30	73	46	30	76	45	29	74	43	32	75
Clerks	1,540	3,919	5,459	1,727	4,031	5,758	1,578	4,112	5,690	1,542	3,919	5,461	1,478	3,896	5,374
<i>of whom as:</i>															
Clerical Officer & School Clerk	1,306	2,277	3,583	1,295	2,482	3,777	1,311	2,494	3,805	1,305	2,538	3,843	1,263	2,611	3,874
Confidential Secretary & Word Processing Operator	21	1,432	1,453	25	1,343	1,368	15	1,346	1,361	15	1,171	1,186	14	1,147	1,161
Telephonist	134	44	178	182	71	253	170	75	245	199	78	277	155	75	230
Service Workers	11,277	702	11,979	12,397	879	13,276	11,658	766	12,424	11,510	842	12,352	11,121	803	11,924
<i>of whom as:</i>															
Police Constable & Sergeant	9,515	544	10,059	10,514	635	11,149	9,896	617	10,513	9,744	704	10,448	9,427	681	10,108
Prison Guard/Officer	817	70	887	890	65	955	865	68	933	861	68	929	824	66	890
Fireman/Fire Officer	729	-	729	703	-	703	687	-	687	677	-	677	646	-	646
Skilled Agricultural & Fishery Workers	282	1	283	398	1	399	299	1	300	280	1	281	191	1	192
Craft & Related Trade Workers	3,312	35	3,347	3,287	39	3,326	3,321	47	3,368	3,049	32	3,081	3,068	46	3,114
Plant & Machine Operators	2,015	18	2,033	2,163	18	2,181	1,940	13	1,953	1,923	30	1,953	1,922	25	1,947
Elementary Occupations	12,995	1,546	14,541	13,697	2,283	15,980	13,225	2,093	15,318	12,955	2,361	15,316	11,222	2,404	13,626
<i>of whom as:</i>															
Attendant, Hospital Servant & Caretaker	3,278	1,118	4,396	4,776	1,843	6,619	4,416	1,588	6,004	4,143	1,827	5,970	4,081	1,839	5,920
Labourer, Agricul. Worker & Gardener	4,836	261	5,097	4,827	295	5,122	5,026	355	5,381	5,149	470	5,619	4,311	513	4,824

Employment data includes both Central & Local governments

¹ includes those on acting appointment

Table 5.5a - Employment in Government Services¹ by occupation & sex, Island of Mauritius, 2007 - 2011

Occupation	2007			2008			2009			2010			2011		
	Male	Female	Both Sexes	Male	Female	Both Sexes	Male	Female	Both Sexes	Male	Female	Both Sexes	Male	Female	Both Sexes
Total Government Services	42,247	17,925	60,172	44,376	18,801	63,177	42,962	18,760	61,722	41,925	18,876	60,801	39,737	19,316	59,053
<i>Legislators, Senior Officials & Managers</i>	<i>1,184</i>	<i>788</i>	<i>1,972</i>	<i>1,261</i>	<i>707</i>	<i>1,968</i>	<i>1,485</i>	<i>873</i>	<i>2,358</i>	<i>1,429</i>	<i>887</i>	<i>2,316</i>	<i>1,470</i>	<i>919</i>	<i>2,389</i>
<i>of whom as:</i>															
Senior Chief Executive	3	2	5	1	2	3	-	1	1	-	1	1	1	2	3
Permanent Secretary	18	9	27	17	9	26	20	8	28	13	7	20	15	6	21
Principal Assistant Secretary	33	23	56	37	21	58	41	24	65	42	22	64	40	21	61
Director/Manager	131	73	204	130	73	203	246	108	354	199	118	317	189	98	287
Rector & Principal	60	35	95	57	31	88	52	27	79	48	26	74	65	38	103
Headteacher & Deputy Headteacher	513	517	1,030	578	448	1,026	574	508	1,082	609	530	1,139	610	550	1,160
Ambassador	18	3	21	19	3	22	18	3	21	17	3	20	13	3	16
First Secretary	19	4	23	20	4	24	19	4	23	19	4	23	16	4	20
Second Secretary	28	16	44	24	16	40	27	16	43	28	16	44	27	16	43
Professionals	2,784	2,120	4,904	2,657	2,098	4,755	2,709	2,136	4,845	3,147	2,273	5,420	3,004	2,150	5,154
<i>of whom as:</i>															
Education Officer	1,126	1,552	2,678	1,107	1,488	2,595	1,091	1,488	2,579	1,351	1,518	2,869	1,276	1,409	2,685
Medical Doctor	629	200	829	573	200	773	632	212	844	591	249	840	545	237	782
Dentist	39	17	56	41	21	62	38	20	58	42	26	68	39	24	63
Analyst/Programmer	30	47	77	27	40	67	27	45	72	29	46	75	34	49	83
Scientific Officer	29	12	41	29	13	42	47	28	75	54	34	88	53	30	83
Engineer	90	5	95	95	6	101	55	2	57	93	6	99	92	9	101
Pharmacist	13	8	21	11	13	24	26	17	43	16	7	23	13	8	21
Judge	7	5	12	6	6	12	9	9	18	10	8	18	12	8	20
Magistrate	14	25	39	16	25	41	15	26	41	18	26	44	15	26	41
Statistician	18	10	28	22	15	37	20	15	35	18	12	30	18	12	30
Accountant & Auditor	45	28	73	45	35	80	42	35	77	39	34	73	45	35	80

Employment data includes both Central & Local governments

¹ includes those on acting appointment

Table 5.5a ctd/... - Employment in Government Services¹ by occupation & sex, Island of Mauritius, 2007 - 2011

Occupation	2007			2008			2009			2010			2011		
	Male	Female	Both Sexes	Male	Female	Both Sexes	Male	Female	Both Sexes	Male	Female	Both Sexes	Male	Female	Both Sexes
Technicians & Associate Professionals	8,729	9,106	17,835	8,529	9,064	17,593	8,396	9,027	17,423	7,635	8,834	16,469	7,692	9,392	17,084
<i>of whom as:</i>															
Teacher & Senior Teacher	1,689	3,027	4,716	1,634	3,093	4,727	1,506	3,069	4,575	1,418	2,879	4,297	1,340	3,191	4,531
Nursing Officer, Midwife & Student Nurse	1,415	2,118	3,533	1,489	1,948	3,437	1,315	1,913	3,228	1,311	1,934	3,245	1,327	1,925	3,252
Community Health Worker	48	175	223	27	140	167	37	151	188	36	139	175	41	149	190
Assistant Secretary	56	66	122	60	75	135	50	62	112	53	63	116	47	62	109
Technical Officer & Technician	167	64	231	122	55	177	137	64	201	133	69	202	121	79	200
Dispenser	161	50	211	165	69	234	185	70	255	297	123	420	302	124	426
Labour Inspector	44	30	74	42	30	72	45	30	75	4	29	33	42	32	74
Clerks	1,479	3,782	5,261	1,671	3,884	5,555	1,522	3,965	5,487	1,486	3,774	5,260	1,421	3,740	5,161
<i>of whom as:</i>															
Clerical Officer & School Clerk	1,269	2,175	3,444	1,263	2,369	3,632	1,274	2,374	3,648	1,268	2,420	3,688	1,226	2,484	3,710
Confidential Secretary & Word Processing Operator	19	1,413	1,432	23	1,323	1,346	13	1,326	1,339	13	1,151	1,164	12	1,125	1,137
Telephonist	130	38	168	177	66	243	166	69	235	162	72	234	151	69	220
Service Workers	11,187	694	11,881	12,301	872	13,173	11,566	759	12,325	11,419	835	12,254	11,033	794	11,827
<i>of whom as:</i>															
Police Constable & Sergeant	9,515	544	10,059	10,514	635	11,149	9,896	617	10,513	9,744	704	10,448	9,427	681	10,108
Prison Guard/Officer	787	66	853	859	62	921	836	65	901	832	65	897	797	61	858
Fireman/Fire Officer	681	-	681	651	-	651	633	-	633	624	-	624	595	-	595
Skilled Agricultural & Fishery Workers	243	-	243	357	-	357	252	-	252	235	-	235	162	-	162
Craft & Related Trade Workers	3,016	26	3,042	3,019	26	3,045	3,049	38	3,087	2,783	23	2,806	2,815	39	2,854
Plant & Machine Operators	1,726	17	1,743	1,886	17	1,903	1,747	12	1,759	1,740	29	1,769	1,746	24	1,770
Elementary Occupations	11,899	1,392	13,291	12,695	2,133	14,828	12,236	1,950	14,186	12,051	2,221	14,272	10,394	2,258	12,652
<i>of whom as:</i>															
Attendant, Hospital Servant & Caretaker	3,182	1,040	4,222	4,631	1,742	6,373	4,185	1,482	5,667	3,921	1,721	5,642	3,864	1,724	5,588
Labourer, Agricul. Worker & Gardener	4,203	200	4,403	4,316	246	4,562	4,551	318	4,869	4,722	436	5,158	3,920	482	4,402

Employment data includes both Central & Local governments

¹ includes those on acting appointment

Table 5.5b - Employment in Government Services¹ by occupation & sex, Island of Rodrigues, 2007 - 2011

Occupation	2007			2008			2009			2010			2011		
	Male	Female	Both Sexes	Male	Female	Both Sexes	Male	Female	Both Sexes	Male	Female	Both Sexes	Male	Female	Both Sexes
Total Government Services	2,314	608	2,922	2,187	607	2,794	2,110	603	2,713	1,992	610	2,602	1,880	656	2,536
<i>Legislators, senior officials & managers</i>	34	13	47	34	13	47	48	15	63	43	16	59	41	26	67
<i>of whom as:</i>															
Director & Manager	1	-	1	1	0	1	2	1	3	2	1	3	1	0	1
Headteacher & Deputy Headteacher	12	10	22	13	10	23	14	10	24	14	11	25	14	12	26
<i>Professionals</i>	84	8	92	88	7	95	100	7	107	94	13	107	86	12	98
<i>of whom as:</i>															
Medical doctor	13	2	15	13	2	15	13	2	15	9	5	14	6	6	12
Dentist	2	-	2	2	-	2	2	-	2	2	-	2	2	-	2
Scientific Officer	4	1	5	6	-	6	5	-	5	5	-	5	6	-	6
Engineer	3	-	3	3	-	3	2	-	2	2	-	2	1	-	1
<i>Technicians & associate professionals</i>	325	277	602	325	268	593	313	273	586	310	278	588	322	298	620
<i>of whom as:</i>															
Teacher, Senior Teacher	50	74	124	45	61	106	46	68	114	47	65	112	55	79	134
Nursing Officer, Midwife & Student Nurse	71	85	156	73	86	159	73	85	158	77	90	167	78	101	179
Community Health Worker	3	4	7	3	5	8	3	5	8	3	5	8	3	4	7
Technical Officer, Technician	32	3	35	35	8	43	35	8	43	35	8	43	33	7	40
Dispenser	7	2	9	12	3	15	12	3	15	10	4	14	9	3	12
Labour Inspector	1	1	2	1	-	1	1	-	1	1	-	1	1	0	1

¹ includes those on acting appointment

Table 5.5b ctd/... - Employment in Government Services¹ by occupation & sex, Island of Rodrigues, 2007 - 2011

Occupation	2007			2008			2009			2010			2011		
	Male	Female	Both Sexes	Male	Female	Both Sexes	Male	Female	Both Sexes	Male	Female	Both Sexes	Male	Female	Both Sexes
<i>Clerks</i>	61	137	198	56	147	203	56	147	203	56	145	201	57	156	213
<i>of whom as:</i>															
Clerical Officer & School Clerk	37	102	139	32	113	145	37	120	157	37	118	155	37	127	164
Confidential Secretary & Word Processing Operator	2	19	21	2	20	22	2	20	22	2	20	22	2	22	24
Telephonist	4	6	10	5	5	10	4	6	10	4	6	10	4	6	10
<i>Service Workers</i>	90	8	98	96	7	103	92	7	99	91	7	98	88	9	97
<i>of whom as:</i>															
Prison Guard/Officer	30	4	34	31	3	34	29	3	32	29	3	32	27	5	32
Fireman/Fire Officer	48	-	48	52	-	52	54	-	54	53	-	53	51	-	51
<i>Skilled Agricultural & Fishery Workers</i>	39	1	40	41	1	42	47	1	48	45	1	46	29	1	30
<i>Craft & Related Trade Workers</i>	296	9	305	268	13	281	272	9	281	266	9	275	253	7	260
<i>Plant & Machine Operators</i>	289	1	290	277	1	278	193	1	194	183	1	184	176	1	177
<i>Elementary Occupations</i>	1,096	154	1,250	1,002	150	1,152	989	143	1,132	904	140	1,044	828	146	974
<i>of whom as:</i>															
Attendant, Hospital Servant, Caretaker	96	78	174	145	101	246	231	106	337	222	106	328	158	93	251
Labourer, Agricul. Worker & Gardener	633	61	694	511	49	560	475	37	512	427	34	461	391	31	422

¹ includes those on acting appointment

Table 5.6 - Number of members at the National Legislative Assembly by year of election & sex, 1987 - 2011

Year	Number of members			% female
	Male	Female	Both sexes	
1987	66	4	70	5.7
1991	64	2	66	3.0
1995	60	6	66	9.1
2000	66	4	70	5.7
2005	58	12	70	17.1
2010	56	13	69	18.8
2011	57	13	70	18.6

Table 5.6a - Number of members at the Municipal Council by year of election & sex, 1985 - 2005

Year	Number of members			% female
	Male	Female	Both sexes	
1985	119	7	126	5.6
1988	118	8	126	6.3
1991	119	7	126	5.6
1996	115	11	126	8.7
2001	109	17	126	13.5
2005	110	16	126	12.7

Table 5.6b - Number of members at the Village Council by year of election & sex, 1986 - 2005

Year	Number of members			% female
	Male	Female	Both sexes	
1986	795	15	810	1.9
1989	1,158	18	1,176	1.5
1992	1,378	14	1,392	1.0
1997	1,435	41	1,476	2.8
2005	1,390	86	1,476	5.8

Table 5.6c - Number of members at the Rodrigues Regional Assembly by year of election & sex, 2002, 2006 & 2010

Year	Number of members			% female
	Male	Female	Both sexes	
2002	15	3	18	16.7
2006	13	5	18	27.8
2010	9	3	12	33.3

Source : Electoral Commissioner's Office



DISABILITY

Table 6.1 - Disabled population and disability prevalence by age and sex, Republic of Mauritius, 2000 & 2011 Population Censuses

Age-group (years)	2000						2011					
	No of disabled persons			Disability prevalence (%)			No of disabled persons			Disability prevalence (%)		
	Male	Female	Both Sexes	Male	Female	Both Sexes	Male	Female	Both Sexes	Male	Female	Both Sexes
Under 10	933	679	1,612	0.9	0.7	0.8	1,186	849	2,035	0.2	0.1	0.2
10 - 19	1,613	1,131	2,744	1.6	1.1	1.3	2,091	1,592	3,683	0.3	0.3	0.3
20 - 29	1,816	1,179	2,995	1.8	1.1	1.5	1,924	1,427	3,351	0.3	0.2	0.3
30 - 39	2,957	1,973	4,930	2.9	2.0	2.4	2,740	1,911	4,651	0.4	0.3	0.4
40 - 49	3,418	2,735	6,153	4.1	3.3	3.7	4,749	3,527	8,276	0.8	0.6	0.7
50 - 59	3,342	3,235	6,577	7.2	6.5	6.8	5,884	5,143	11,027	1.0	0.8	0.9
60 and above	6,497	9,282	15,779	14.0	15.2	14.7	10,413	16,432	26,845	1.7	2.6	2.2
Total	20,576	20,214	40,790	3.5	3.4	3.5	28,987	30,881	59,868	4.7	4.9	4.8

Table 6.1a - Disabled population and disability prevalence by age and sex, Island of Mauritius, 2000 & 2011 Population Censuses

Age-group (years)	2000						2011					
	No of disabled persons			Disability prevalence (%)			No of disabled persons			Disability prevalence (%)		
	Male	Female	Both Sexes	Male	Female	Both Sexes	Male	Female	Both Sexes	Male	Female	Both Sexes
Under 10	878	634	1,512	0.9	0.7	0.8	1,099	779	1,878	0.2	0.1	0.2
10 - 19	1,526	1,054	2,580	1.6	1.1	1.3	1,970	1,504	3,474	0.3	0.2	0.3
20 - 29	1,756	1,123	2,879	1.8	1.1	1.5	1,818	1,350	3,168	0.3	0.2	0.3
30 - 39	2,890	1,911	4,801	2.9	2.0	2.4	2,626	1,824	4,450	0.4	0.3	0.4
40 - 49	3,370	2,694	6,064	4.1	3.3	3.7	4,627	3,407	8,034	0.8	0.6	0.7
50 - 59	3,299	3,175	6,474	7.2	6.5	6.8	5,767	5,025	10,792	1.0	0.8	0.9
60 and above	6,315	9,015	15,330	14.0	15.2	14.7	10,103	15,857	25,960	1.7	2.6	2.2
Total	20,034	19,606	39,640	3.5	3.4	3.5	28,010	29,746	57,756	4.7	4.9	4.8

Table 6.1b - Disabled population and disability prevalence by age and sex, Island of Rodrigues, 2000 & 2011 Population Censuses

Age-group (years)	2000						2011					
	No of disabled persons			Disability prevalence (%)			No of disabled persons			Disability prevalence (%)		
	Male	Female	Both Sexes	Male	Female	Both Sexes	Male	Female	Both Sexes	Male	Female	Both Sexes
Under 10	55	45	100	1.5	1.2	1.4	87	70	157	0.4	0.3	0.4
10 - 19	87	77	164	2.1	1.8	2.0	121	88	209	0.6	0.4	0.5
20 - 29	60	56	116	1.9	1.8	1.8	106	77	183	0.5	0.4	0.5
30 - 39	67	62	129	2.9	2.6	2.7	114	87	201	0.6	0.4	0.5
40 - 49	48	41	89	2.6	2.3	2.5	122	120	242	0.6	0.6	0.6
50 - 59	43	60	103	3.5	5.0	4.2	117	118	235	0.6	0.6	0.6
60 and above	182	267	449	13.7	16.3	15.1	310	575	885	1.6	2.8	2.2
Total	542	608	1,150	3.1	3.4	3.2	977	1,135	2,112	4.9	5.5	5.2

Table 6.2 - Disabled population and disability prevalence by type of disability and sex, Republic of Mauritius, 2000 & 2011 Population Censuses

Type of disability	2000						2011					
	No of disabled persons			Disability prevalence (%)			No of disabled persons			Disability prevalence (%)		
	Male	Female	Both Sexes	Male	Female	Both Sexes	Male	Female	Both Sexes	Male	Female	Both Sexes
Ambulation/manual	6,734	5,508	12,242	1.2	0.9	1.0	13,057	15,196	28,253	2.1	2.4	2.3
Seeing/hearing/speaking	6,112	6,877	12,989	1.0	1.2	1.1	6,920	7,781	14,701	1.1	1.2	1.2
Mental conditions	3,568	2,839	6,407	0.6	0.5	0.5	7,322	6,295	13,617	1.2	1.0	1.1
Other	4,162	4,990	9,152	0.7	0.8	0.8	1,688	1,609	3,297	0.3	0.3	0.3
Total	20,576	20,214	40,790	3.5	3.4	3.5	28,987	30,881	59,868	4.7	4.9	4.8

Table 6.2a - Disabled population and disability prevalence by type of disability and sex, Island of Mauritius, 2000 & 2011 Population Censuses

Type of disability	2000						2011					
	No of disabled persons			Disability prevalence (%)			No of disabled persons			Disability prevalence (%)		
	Male	Female	Both Sexes	Male	Female	Both Sexes	Male	Female	Both Sexes	Male	Female	Both Sexes
Ambulation/manual	6,521	5,266	11,787	1.2	0.9	1.0	12,615	14,638	27,253	2.1	2.4	2.3
Seeing/hearing/speaking	5,940	6,699	12,639	1.0	1.2	1.1	6,688	7,518	14,206	1.1	1.2	1.2
Mental conditions	3,479	2,762	6,241	0.6	0.5	0.5	7,092	6,047	13,139	1.2	1.0	1.1
Other	4,094	4,879	8,973	0.7	0.8	0.8	1,615	1,543	3,158	0.3	0.3	0.3
Total	20,034	19,606	39,640	3.5	3.4	3.5	28,010	29,746	57,756	4.7	4.9	4.8

Table 6.2b - Disabled population and disability prevalence by type of disability and sex, Island of Rodrigues, 2000 & 2011 Population Censuses

Type of disability	2000						2011					
	No of disabled persons			Disability prevalence (%)			No of disabled persons			Disability prevalence (%)		
	Male	Female	Both Sexes	Male	Female	Both Sexes	Male	Female	Both Sexes	Male	Female	Both Sexes
Ambulation/manual	213	242	455	1.2	1.3	1.3	442	558	1,000	2.2	2.7	2.5
Seeing/hearing speaking	172	178	350	1.0	1.0	1.0	332	263	595	1.7	1.3	1.5
Mental conditions	89	77	166	0.5	0.4	0.5	230	248	478	1.2	1.2	1.2
Other	68	111	179	0.4	0.6	0.5	73	66	139	0.4	0.3	0.3
Total	542	608	1,150	3.1	3.4	3.2	1,077	1,135	2,212	5.4	5.5	5.5



SOCIAL BENEFITS

Table 7.1 - Population receiving Social Security benefits by sex and type , Republic of Mauritius, 2007 - 2011 ¹

	2007			2008			2009			2010			2011		
	Male	Female	Both sexes	Male	Female	Both sexes	Male	Female	Both sexes	Male	Female	Both sexes	Male	Female	Both sexes
Total elderly ^{2/}	56,065	75,061	131,126	58,431	77,977	136,408	60,658	80,924	141,582	64,131	84,788	148,919	69,914	91,305	161,219
<i>of whom: severely disabled</i>	<i>5,969</i>	<i>11,428</i>	<i>17,397</i>	<i>5,806</i>	<i>11,175</i>	<i>16,981</i>	<i>5,630</i>	<i>10,833</i>	<i>16,463</i>	<i>5,761</i>	<i>11,057</i>	<i>16,818</i>	<i>5,595</i>	<i>10,932</i>	<i>16,527</i>
<i>90 years and above</i>	<i>565</i>	<i>1,645</i>	<i>2,210</i>	<i>587</i>	<i>1,714</i>	<i>2,301</i>	<i>601</i>	<i>1,725</i>	<i>2,326</i>	<i>633</i>	<i>1,845</i>	<i>2,478</i>	<i>686</i>	<i>2,085</i>	<i>2,771</i>
Total Widows	--	22,810	22,810	--	22,611	22,611	--	22,596	22,596	--	21,850	21,850	--	21,503	21,503
Persons with disabilities (aged 15-59 years)	13,814	13,789	27,603	13,642	13,721	27,363	13,593	13,576	27,169	13,888	13,791	27,679	13,522	13,406	26,928
Cases of Social Aid ^{3/}	16,876	16,577	17,180	19,432	20,191

^{1/} As from 2010, data are calculated as at 31st December instead of 30th June as in previous years

^{2/} Population aged 60 years and above

^{3/} Refers to number of heads of families who benefit from Social Aid for themselves and for members of their family.

Table 7.1(a) - Population receiving Social Security benefits by sex and type, Island of Mauritius, 2007 - 2011 ¹

	2007			2008			2009			2010			2011		
	Male	Female	Both sexes	Male	Female	Both sexes	Male	Female	Both sexes	Male	Female	Both sexes	Male	Female	Both sexes
Total elderly ^{2/}	54,422	72,998	127,420	56,756	75,876	132,632	58,949	78,813	137,762	62,361	82,648	145,009	68,071	89,073	157,144
<i>of whom:</i>															
<i>severely disabled</i>	5,838	11,062	16,900	5,652	10,760	16,412	5,483	10,432	15,915	5,578	10,634	16,212	5,394	10,423	15,817
<i>90 years and above</i>	547	1,587	2,134	565	1,657	2,222	581	1,666	2,247	608	1,783	2,391	664	2,020	2,684
Total Widows	--	22,412	22,412	--	22,213	22,213	--	22,183	22,183	--	21,380	21,380	--	21,086	21,086
Persons with disabilities (aged 15-59 years)	13,479	13,379	26,858	13,284	13,257	26,541	13,224	13,100	26,324	13,515	13,303	26,818	13,184	12,974	26,158
Cases of Social Aid ^{3/}	15,265	14,996	15,610	17,239	17,702

^{1/} As from 2010, data are calculated as at 31st December instead of 30th June as in previous years

^{2/} Population aged 60 years and above

^{3/} Refers to number of heads of families who benefit from Social Aid for themselves and for members of their family.

Table 7.1(b) - Population receiving Social Security benefits by sex and type , Island of Rodrigues, 2007 - 2011 ¹

	2007			2008			2009			2010			2011		
	Male	Female	Both Sexes	Male	Female	Both Sexes	Male	Female	Both Sexes	Male	Female	Both Sexes	Male	Female	Both Sexes
Total elderly ^{2/}	1,643	2,063	3,706	1,675	2,101	3,776	1,709	2,111	3,820	1,770	2,140	3,910	1,843	2,232	4,075
<i>of whom: severely disabled</i>	<i>131</i>	<i>366</i>	497	<i>154</i>	<i>415</i>	569	<i>147</i>	<i>401</i>	548	<i>183</i>	<i>423</i>	606	<i>201</i>	<i>509</i>	710
<i>90 years and above</i>	<i>18</i>	<i>58</i>	76	<i>22</i>	<i>57</i>	79	<i>20</i>	<i>59</i>	79	<i>25</i>	<i>62</i>	87	<i>22</i>	<i>65</i>	87
Total Widows	--	398	398	--	398	398	--	413	413	--	435	435	--	417	417
Persons with disabilities (aged 15-59 years)	335	410	745	358	464	822	369	476	845	373	488	861	338	432	770
Cases of Social Aid ^{3/}	1,611	1,581	1,570	2,193	2,489

^{1/} As from 2010, data are calculated as at 31st December instead of 30th June as in previous years

^{2/} Population aged 60 years and above

^{3/} Refers to number of heads of families who benefit from Social Aid for themselves and for members of their family.



*DATA COLLECTED
BY THE
MGECDFW*

Table 8.1a - Number of reported cases registered at the Family Support Bureau (FSB)¹ by nature of problem & sex, 2003 - 2007

	2003			2004			2005			2006			2007		
	Male	Female	Both Sexes	Male	Female	Both Sexes	Male	Female	Both Sexes	Male	Female	Both Sexes	Male	Female	Both Sexes
Total registered² <i>of which are :</i>	4,418	10,848	15,266	4,287	10,555	14,842	5,302	11,860	17,162	5,022	11,468	16,490	5,486	11,880	17,366
<i>Follow up cases²</i>	1,817	4,337	6,154	2,325	4,949	7,274	3,289	6,568	9,857	3,038	6,561	9,599	3,588	7,261	10,849
<i>New cases²</i> <i>of which due to³ :</i>	2,601	6,511	9,112	1,962	5,606	7,568	2,013	5,292	7,305	1,984	4,907	6,891	1,898	4,619	6,517
Accommodation	46	72	118	7	19	26	1	27	28	1	26	27	6	14	20
Alcoholism/ drug addiction	82	1,549	1,631	27	716	743	47	532	579	21	409	430	47	314	361
Alimony	24	146	170	27	109	136	27	73	100	-	32	32	5	37	42
Conflict with inlaws	40	354	394	50	235	285	43	239	282	38	264	302	61	282	343
Conflict with partner	434	2,114	2,548	343	1,773	2,116	319	1,562	1,881	298	1,622	1,920
Damage	9	300	309	8	50	58	7	25	32	3	31	34	5	27	32
Divorce	52	282	334	36	154	190	58	155	213	38	154	192	36	134	170
Domestic violence	106	1,541	1,647	143	1,579	1,722	54	982	1,036	65	976	1,041	113	1,336	1,449
Extramarital affairs	69	615	684	65	395	460	65	300	365	69	287	356	65	259	324
Family dispute	19	101	120	22	64	86	10	31	41	17	25	42	16	53	69
Financial	45	414	459	45	237	282	39	249	288	10	156	166	12	92	104

¹In September 1997, the Family Counselling Service (FCS) was renamed the Domestic Violence Intervention Unit (DVIU). It later on (August 2003) merged with other services (as the Child Dev. Unit) & was known as the Integrated Services Centre (ISC). As from June 2004 it was renamed the Family Support Bureau (FSB).

²Also includes child cases as from **August 2003** as all services (FCS, CDU & DVIU) were integrated to a single service (ISC now FSB). However, cases by 'nature of problem'³ refer to **adult cases only**.

Table 8.1a(ct'd) - Number of reported cases registered at the Family Support Bureau by nature of problem & sex, 2003 - 2007

<i>New cases</i> of which due to:	2003			2004			2005			2006			2007		
	Male	Female	Both Sexes	Male	Female	Both Sexes	Male	Female	Both Sexes	Male	Female	Both Sexes	Male	Female	Both Sexes
Harassment	53	894	947	60	661	721	67	436	503	25	345	370	67	734	801
Illtreatment	53	891	944	61	645	706	62	420	482	28	315	343	97	182	279
Legal problems	24	77	101	47	235	282	35	157	192	56	195	251	61	282	343
Physical assault	66	1,140	1,206	99	1,116	1,215	61	765	826	39	519	558	28	452	480
Property	22	271	293	16	86	102	21	133	154	19	134	153	26	109	135
Psychological	118	231	349	89	212	301	97	164	261	40	183	223	78	163	241
Sexual abuse	30	314	344	13	144	157	14	65	79	1	47	48	3	60	63
Sexual harassment	7	90	97	3	34	37	5	33	38	-	8	8	1	8	9
Threatening assault	39	1,319	1,358	21	319	340	32	376	408	21	224	245	15	85	100
Threatening behaviour	25	975	1,000	15	328	343	17	243	260	2	47	49	13	50	63
Verbal abuse	65	1,212	1,277	66	806	872	49	528	577	29	438	467	18	150	168

- 69 -

Table 8.1b - Number of Orders issued by type and year, 2002 - 2011

Type of Order issued	2002	2003	2004	2005	2006	2007	2008	2009	2010	2011
Protection Order	727	715	472	433	366	243	279	260	326	310
Occupation Order	1	6	12	15	6	8	10	8	5	9

Table 8.1c - Number of reported cases registered at the Family Support Bureau (FSB) by nature of problem & sex, 2008 - 2011

	2008			2009			2010			2011		
	Male	Female	Both Sexes	Male	Female	Both Sexes	Male	Female	Both Sexes	Male	Female	Both Sexes
Total no of cases registered	5,190	11,553	16,743	6,509	14,126	20,635	7,076	15,261	22,337	2,599	7,882	10,481
of which are:												
Follow up cases	3,289	6,993	10,282	4,281	8,789	13,070	4,695	9,631	14,326	1,947	4,761	6,708
New cases	1,901	4,560	6,461	2,228	5,337	7,565	2,381	5,630	8,011	652	3,121	3,773
New adult cases	680	2,861	3,541	780	3,282	4,062	860	3,592	4,452	652	3,121	3,773
of which due to :												
<u>Marital</u>												
Abandonment	37	71	108	32	48	80	32	45	77	6	18	24
Alcoholism	37	294	331	35	426	461	50	414	464	55	370	425
Accommodation	2	29	31	1	44	45	4	35	39	3	13	16
Drug addiction	3	28	31	7	42	49	6	40	46	3	36	39
Extra marital affairs	45	294	339	68	320	388	72	322	394	59	302	361
Financial	29	166	195	30	253	283	29	217	246	11	170	181
Interference of in Laws	36	244	280	54	266	320	44	249	293	44	231	275
Conflict with partner	281	1,384	1,665	397	1,568	1,965	343	1,794	2,137	342	1,717	2,059
Other	18	47	65	1	8	9	51	199	250	61	356	417
Subtotal	488	2,557	3,045	625	2,975	3,600	631	3,315	3,946	584	3,213	3,797
<u>Domestic Violence</u>												
Damage to property	6	31	37	12	52	64	12	40	52	6	21	27
Physical assault by spouse/partner	45	727	772	65	745	810	47	653	700	58	609	667
Physical assault by others living under the same roof	48	140	188	18	103	121	44	94	138	13	97	110
Psychological	72	138	210	67	170	237	48	125	173	8	23	31
Sexual (rape, sodomy, sexual harassment)	11	85	96	3	38	41	4	16	20		8	8
Verbal assault by spouse (illtreatment, harassment, abuse, humiliation)	79	690	769	130	815	945	79	685	764	46	292	338
Verbal assault by others living under the same roof	25	118	143	26	83	109	26	120	146	5	39	44
Other	1	30	31	4	21	25	3	219	222	59	533	592
Subtotal	287	1,959	2,246	325	2,027	2,352	263	1,952	2,215	195	1,622	1,817

Table 8.1c (ct'd) - No of reported cases registered at the Family Support Bureau by nature of problem & sex, 2008 - 2011

	2008			2009			2010			2011		
	Male	Female	Both Sexes	Male	Female	Both Sexes	Male	Female	Both Sexes	Male	Female	Both Sexes
<u>Legal</u>												
Alimony	26	83	109	9	76	85	4	60	64	-	30	30
Breach of promise of marriage	-	12	12	0	3	3	24	50	74	-	14	14
Custody of child, droit de visite /d'hebergement)	157	249	406	116	145	261	156	221	377	17	50	67
Conflict with neighbour	9	23	32	11	27	38	4	43	47	9	33	42
Divorce	26	119	145	40	150	190	39	119	158	23	92	115
Eviction	5	19	24	1	6	7	7	14	21	6	34	40
Immediate care and control	6	7	13	3	12	15	10	19	29	-	4	4
Property	36	129	165	45	133	178	42	169	211	34	133	167
Other	13	36	49	20	61	81	55	182	237	77	316	393
Subtotal	278	677	955	245	613	858	341	877	1,218	166	706	872
<u>Other</u>												
Empty shell marriage	4	9	13	9	13	22	5	6	11	-	-	-
Sexual harassment	3	24	27	2	10	12	3	15	18	-	3	3
Sodomy	7	4	11	5	6	11	6	2	8	-	3	3
Separation	9	26	35	12	44	56	6	33	39	-	-	-
Conflict with children	59	162	221	85	159	244	65	168	233	44	164	208
Conflict with parent	32	110	142	71	89	160	35	123	158	34	128	162
Family dispute	10	29	39	20	45	65	14	47	61	11	35	46
Gambling	-	8	8	7	26	33	8	46	54	3	16	19
Psychological /emotional	75	183	258	90	190	280	192	303	495	39	164	203
Suicidal tendencies	9	14	23	10	21	31	5	24	29	3	5	8
Psychiatric	-	4	4	-	1	1	-	2	2	1	6	7
Other	4	20	24	9	14	23	116	188	304	21	92	113
Subtotal	212	593	805	320	618	938	455	957	1,412	156	616	772

Table 8.2 - Number of child cases reported at the Child Development Unit/Family Support Bureau by nature of problem and sex, 2003 - 2007

	2003			2004			2005			2006			2007		
	Male	Female	Both Sexes	Male	Female	Both Sexes	Male	Female	Both Sexes	Male	Female	Both Sexes	Male	Female	Both Sexes
Total registered	1,532	1,767	3,299	1,430	1,906	3,336	1,573	1,788	3,361	1,673	2,218	3,891	1,548	1,975	3,523
of which due to :															
Abandoned child	30	20	50	26	33	59	49	36	85	40	42	82	51	47	98
Child behavioural problem	298	317	615	279	288	567	285	310	595	314	364	678	333	322	655
Child not attending school	88	71	159	65	56	121	96	64	160	60	45	105	44	29	73
Child prostitution	-	4	4	-	4	4	-	2	2	-	3	3	-	5	5
Child with psychological problem	273	315	588	186	220	406	221	224	445	205	261	466	165	217	382
Custody of child	168	190	358	153	148	301	122	144	266	198	210	408	182	224	406
Immediate care and control	12	5	17	18	14	32	28	17	45	21	19	40	18	22	40
Incest	2	35	37	1	8	9	4	21	25	8	47	55	6	19	25
Neglected child	122	120	242	151	151	302	201	181	382	142	158	300	174	173	347
Physical abuse by parents	118	110	228	62	93	155	98	84	182	122	137	259	110	121	231
Social aid/finance	225	220	445	202	248	450	183	177	360	200	181	381	133	151	284
Teenage pregnancy	- . -	53	53	- . -	112	112	- . -	119	119	- . -	80	80	- . -	47	47
Victim of sexual abuse	17	112	129	24	169	193	27	128	155	31	213	244	31	209	240

**Table 8.2a - Number of child cases reported at the Child Development Unit/
Family Support Bureau by nature of problem and sex, 2009 - 2011**

Nature of problem	2009			2010			2011		
	Male	Female	Both Sexes	Male	Female	Both Sexes	Male	Female	Both Sexes
<u>Abandonment :</u>									
Abandonment by father	14	14	28	17	13	30	34	12	46
Abandonment by mother	29	29	58	52	25	77	37	42	79
Abandonment by both parents	11	6	17	15	19	34	13	19	32
Abandonment by guardian/other	2	2	4	-	-	-	2	3	5
Total abandonment	56	51	107	84	57	141	86	76	162
<u>Physical abuse :</u>									
Physical abuse by mother	41	57	98	60	57	117	54	58	112
Physical abuse by father	74	78	152	76	80	156	99	97	196
Physical abuse by both parents	72	65	137	58	77	135	45	40	85
Physical abuse by step-mother	5	1	6	8	12	20	5	12	17
Physical abuse by step-father	14	6	20	7	10	17	6	13	19
Physical abuse by both step-parents	1	-	1	2	-	2	1	1	2
Physical abuse by teacher	11	2	13	12	6	18	25	6	31
Physical abuse by siblings	1	2	3	1	1	2	1	9	10
Physical abuse by others	31	40	71	81	89	170	94	66	160
Burnt by mother	2	-	2	-	-	-	-	-	0
Burnt by others	5	6	11	4	4	8	4	5	9
Total physical abuse	257	257	514	309	336	645	334	307	641

**Table 8.2a (c'td) - Number of child cases reported at the Child Development Unit/
Family Support Bureau by nature of problem and sex, 2009 - 2011**

Nature of problem	2009			2010			2011		
	Male	Female	Both Sexes	Male	Female	Both Sexes	Male	Female	Both Sexes
<u>Neglect cases:</u>									
Neglect & failure to thrive	304	375	679	413	422	835	397	381	778
Undeclared child	8	7	15	3	5	8	1	5	6
Not attending school	65	37	102	113	103	216	97	61	158
Total neglect cases	377	419	796	529	530	1,059	495	447	942
<u>Worst forms of Labour:</u>									
Mendicity	4	7	11	2	10	12	3	3	6
Child labour	3	1	4	2	1	3	5	4	9
Commercial sexual exploitation (incl.child prostitution)	-	2	2	-	2	2	-	2	2
Total worst forms of Labour	7	10	17	4	13	17	8	9	17
<u>Sexual abuse:</u>									
Sexual intercourse with minor under 16	-	99	99	-	113	113	-	83	83
Attempt upon chastity	12	89	101	7	106	113	10	103	113
Sexual harassment	-	16	16	4	12	16	2	17	19
Sodomy	16	10	26	20	8	28	26	7	33
Bestiality	1	1	2	-	-	-	-	-	-
Rape	-	11	11	-	11	11	-	14	14
<u>Incest:</u>									
Attempt upon chastity	5	20	25	7	22	29	3	26	29
Sexual intercourse with minor under 16	-	3	3	-	3	3	-	8	8
Sodomy	3	-	3	1	2	3	1	1	2
Sexual harassment	-	-	-	-	1	1	-	1	1
Total incest	8	23	31	8	28	36	4	36	40
Total sexual abuse (including incest)	37	249	286	39	278	317	42	260	302

**Table 8.2a (c'td)- Number of child cases reported at the Child Development Unit/
Family Support Bureau by nature of problem and sex, 2009 - 2011**

Nature of problem	2009			2010			2011		
	Male	Female	Both Sexes	Male	Female	Both Sexes	Male	Female	Both Sexes
<u>Psychological / emotional abuse:</u>									
Emotional deprivation	179	247	426	231	307	538	285	305	590
Behavioural problem	353	320	673	372	426	798	468	481	949
Conflict with parents	19	14	23	6	14	20	14	15	29
Threats	7	2	9	2	3	5	2	7	9
Attempt suicide	1	6	7	2	20	22	4	19	23
Total Psychological / emotional abuse:	559	589	1,148	613	770	1,383	773	827	1,600
<u>Other types of problems:</u>									
Adoption	2	1	3	2	1	3	5	2	7
Death	1	-	1	3	6	9	2	2	4
Transfer of school	7	11	18	14	12	26	16	20	36
Conflict with parents/harassment	4	18	22	23	17	40	16	10	26
Harassment by others	10	42	52	54	72	126	45	60	105
Custody of child	311	334	645	476	522	998	513	484	997
Bullying	2	1	3	1	-	1	2	2	4
No place of abode	18	28	46	37	37	74	33	27	60
Social aid	228	242	470	150	215	365	159	138	297
Tardy declaration	2	7	9	3	3	6	7	7	14
Teenage pregnancy / mother	-	151	151	-	103	103	-	99	99
Child kidnapping	2	-	3	2	6	8	1	1	2
Substance abuse - drugs	3	-	3	-	2	2	1	-	1
Substance abuse - Alcohol	-	1	1	-	3	3	2	-	2
Child trafficking	-	1	1	1	-	1	6	6	12
Alimony	77	76	153	92	101	193	91	114	205
Droit de visite	54	73	127	83	100	183	55	61	116
Legal problem	3	3	6	13	19	32	4	5	9
Immediate care & control	13	17	30	34	32	66	24	15	39
Other problems:	135	162	297	90	130	220	133	149	282
Total other types of problems	872	1,169	2,041	1,078	1,381	2,459	1,115	1,202	2,317
TOTAL	2,165	2,744	4,909	2,656	3,365	6,021	2,853	3,128	5,981

Table 8.3 - Number of persons following training courses (held by the Home Economics Unit) by course followed and sex, 2006 - 2011

Course followed	2006			2007			2008			2009			2010			2011		
	Male	Female	Both sexes	Male	Female	Both sexes	Male	Female	Both sexes	Male	Female	Both sexes	Male	Female	Both sexes	Male	Female	Both sexes
Floral arrangement	-	820	820	-	758	758	-	410	410	-	582	582	1	516	517	-	444	444
Food preservation	-	232	232	-	320	320	1	257	258	-	368	368	-	617	617	-	698	698
Healthy eating/nutrition (advance)	-	376	376	-	415	415	-	27	27	-	126	126	3	494	497
Home Economics	1	1,267	1,268	-	1,352	1,352	-	1,553	1,553	-	852	852	1	595	596	-	640	640
Pastry & Dessert	-	478	478	-	442	442	2	384	386	1	644	645	1	433	434	3	553	556
Home Decoration	-	340	340	-	263	263	1	289	290	-	71	71
Curtain Making	-	25	25	-	199	199	-	112	112	-	58	58
Life Skill Development Motherhood and Childcare	16	19	35	29	16	45
Composite short term course	-	1065	1065	-	774	774
Agricultural Club *																1	346	347
Evening/Weekend course for men & women*																-	52	52
TOTAL	1	4,238	4,239	-	4,061	4,061	3	2,996	2,999	17	2,927	2,944	4	2,799	2,803	36	3,693	3,729

Note: ... course not offered

* New Courses



CHILDREN

Table 9.1 - Child population by age group, sex and urban/rural residence - 2011 Population Census, Republic of Mauritius

Age group (years)	Total				Urban				Rural			
	Male	Female	Both sexes		Male	Female	Both sexes		Male	Female	Both sexes	
			No	%			No	%			No	%
Under 1	6,151	6,156	12,307	1.0	2,172	2,216	4,388	0.4	3,979	3,940	7,919	0.6
1 - 4	30,551	30,220	60,771	4.9	11,048	10,861	21,909	1.8	19,503	19,359	38,862	3.1
5 - 9	44,947	44,068	89,015	7.2	16,177	15,859	32,036	2.6	28,770	28,209	56,979	4.6
10 - 14	47,302	46,337	93,639	7.6	17,523	17,505	35,028	2.8	29,779	28,832	58,611	4.7
15 - 17	29,834	29,625	59,459	4.8	11,509	11,485	22,994	1.9	18,325	18,140	36,465	2.9
< 18	158,785	156,406	315,191	25.5	58,429	57,926	116,355	9.4	100,356	98,480	198,836	16.1
All ages	610,848	625,969	1,236,817		244,688	254,661	499,349		366,160	371,308	737,468	

Table 9.1a - Child population by age group, sex and urban/rural residence - 2011 Population Census, Island of Mauritius

Age group (years)	Total				Urban				Rural			
	Male	Female	Both sexes		Male	Female	Both sexes		Male	Female	Both sexes	
			No	%			No	%			No	%
Under 1	5,827	5,853	11,680	1.0	2,172	2,216	4,388	0.4	3,655	3,637	7,292	0.6
1 - 4	28,973	28,647	57,620	4.8	11,048	10,861	21,909	1.8	17,925	17,786	35,711	3.0
5 - 9	42,832	41,996	84,828	7.1	16,177	15,859	32,036	2.7	26,655	26,137	52,792	4.4
10 - 14	45,370	44,436	89,806	7.5	17,523	17,505	35,028	2.9	27,847	26,931	54,778	4.6
15 - 17	28,738	28,463	57,201	4.8	11,509	11,485	22,994	1.9	17,229	16,978	34,207	2.9
< 18	151,740	149,395	301,135	29.9	58,429	57,926	116,355	9.7	93,311	91,469	184,780	15.4
All ages	590,944	605,439	1,196,383		244,688	254,661	499,349		346,256	350,778	697,034	

Table 9.1b - Child population by age group, sex and urban/rural¹ residence - 2011 Population Census, Island of Rodrigues

Age group (years)	Total			
	Male	Female	Both sexes	
			No	%
Under 1	324	303	627	1.6
1 - 4	1,578	1,573	3,151	7.8
5 - 9	2,115	2,072	4,187	10.4
10 - 14	1,932	1,901	3,833	9.5
15 - 17	1,096	1,162	2,258	5.6
< 18	7,045	7,011	14,056	34.8
All ages	19,904	20,530	40,434	

¹Island of Rodrigues is totally rural

Table 9.2 - Estimated mid year child population by age group and sex, 2010 & 2011, Republic of Mauritius

Age-group (years)	2010				2011			
	Male	Female	Both sexes		Male	Female	Both sexes	
			Number	%			Number	%
0	7,637	7,503	15,140	1.2	7,309	7,129	14,438	1.1
1 - 4	34,052	32,935	65,370	5.1	32,435	31,681	64,116	5.0
5 - 9	48,937	47,416	95,371	7.4	47,955	46,363	94,318	7.4
10 - 14	49,841	48,410	98,393	7.7	49,983	48,265	98,248	7.7
15 - 17	32,342	32,081	63,366	4.9	31,285	30,914	62,199	4.9
< 18	172,809	168,345	341,154	26.6	168,967	164,352	333,319	26.0
All ages	631,692	649,232	1,280,924	100.0	633,724	652,327	1,286,051	100.0

Table 9.2a - Estimated mid year child population by age group and sex, 2010 & 2011, Island of Mauritius

Age-group (years)	2010				2011			
	Male	Female	Both sexes		Male	Female	Both sexes	
			Number	%			Number	%
0	7,265	7,137	14,402	1.2	6,969	6,823	13,792	1.1
1 - 4	32,402	31,349	63,751	5.1	30,836	30,146	60,982	4.9
5 - 9	46,785	45,420	92,205	7.4	45,790	44,327	90,117	7.2
10 - 14	48,077	46,631	94,708	7.6	48,150	46,480	94,630	7.6
15 - 17	31,279	30,981	62,260	5.0	30,222	29,817	60,039	4.8
< 18	165,808	161,518	327,326	26.3	161,967	157,593	319,560	25.7
All ages	612,981	630,103	1,243,084	100.0	614,970	633,156	1,248,126	100.0

Table 9.2b - Estimated mid year child population by age group and sex, 2010 & 2011, Island of Rodrigues

Age-group (years)	2010				2011			
	Male	Female	Both sexes		Male	Female	Both sexes	
			Number	%			Number	%
0	372	366	738	2.0	340	306	646	1.7
1 - 4	1,650	1,586	3,236	8.6	1,599	1,535	3,134	8.3
5 - 9	2,152	1,996	4,148	11.0	2,165	2,036	4,201	11.1
10 - 14	1,764	1,779	3,543	9.4	1,833	1,785	3,618	9.6
15 - 17	1,063	1,100	2,163	5.7	1,063	1,097	2,160	5.7
< 18	7,001	6,827	13,828	36.5	7,000	6,759	13,759	36.4
All ages	18,711	19,129	37,840	100.0	18,754	19,171	37,925	100.0

Table 9.3 - Children receiving selected Social Security benefits by age-group & sex , Republic of Mauritius, 2007 - 2011 ¹

	2007			2008			2009			2010			2011		
	Male	Female	Both Sexes	Male	Female	Both Sexes	Male	Female	Both Sexes	Male	Female	Both Sexes	Male	Female	Both Sexes
Beneficiaries of Basic Orphan's pension	194	183	377	220	176	396	198	155	353	188	161	349	195	176	371
<i>of whom:</i>															
<i>Under 15years</i>	<i>108</i>	<i>85</i>	193	<i>121</i>	<i>77</i>	198	<i>107</i>	<i>68</i>	175	<i>108</i>	<i>75</i>	183	<i>108</i>	<i>83</i>	191
<i>(15 - 19) years ^{2/}</i>	<i>86</i>	<i>98</i>	184	<i>99</i>	<i>99</i>	198	<i>91</i>	<i>87</i>	178	<i>80</i>	<i>86</i>	166	<i>87</i>	<i>93</i>	180
Beneficiaries of child allowance	9,856	9,448	19,304	9,440	9,011	18,451	9,314	8,830	18,144	9,358	8,874	18,232	9,592	8,998	18,590
<i>of whom:</i>															
children of old-age pensioners	104	100	204	95	104	199	109	105	214	119	108	227	134	111	245
children of widows	3,848	3,833	7,681	3,649	3,626	7,275	3,594	3,516	7,110	3,528	3,417	6,945	3,533	3,490	7,023
children of disabled persons	5,652	5,271	10,923	5,426	5,015	10,441	5,348	4,962	10,310	5,462	5,084	10,546	5,664	5,117	10,781
Other ^{3/}	252	244	496	270	266	536	263	247	510	249	265	514	261	280	541

^{1/} As from 2010, data are calculated as at 31st December instead of 30th June as in previous years

^{2/} In this age group, only orphans attending full-time education receive a pension.

^{3/} These are children whose parents were previously beneficiaries of Basic Retirement Pension or Basic Widow's Pension or Basic Invalid's Pension.

Table 9.3(a) - Children receiving selected Social Security benefits by age-group & sex , Island of Mauritius, 2007 - 2011 ¹

	2007			2008			2009			2010			2011		
	Male	Female	Both Sexes	Male	Female	Both Sexes	Male	Female	Both Sexes	Male	Female	Both Sexes	Male	Female	Both Sexes
Beneficiaries of Basic Orphan's pension	153	157	310	173	157	330	165	140	305	157	147	304	168	156	324
<i>of whom:</i>															
<i>Under 15years</i>	91	77	168	101	69	170	90	61	151	92	67	159	94	71	165
<i>(15 - 19) years ^{2/}</i>	62	80	142	72	88	160	75	79	154	65	80	145	74	85	159
Beneficiaries of child allowance	9,547	9,113	18,660	9,101	8,666	17,767	8,988	8,475	17,463	9,025	8,527	17,552	9,262	8,640	17,902
<i>of whom:</i>															
children of old-age pensioners	100	93	193	90	97	187	104	100	204	113	103	216	126	108	234
children of widows	3,737	3,718	7,455	3,547	3,522	7,069	3,509	3,414	6,923	3,427	3,312	6,739	3,432	3,379	6,811
children of disabled persons	5,468	5,069	10,537	5,208	4,795	10,003	5,125	4,729	9,854	5,248	4,864	10,112	5,455	4,889	10,344
Other ^{3/}	242	233	475	256	252	508	250	232	482	237	248	485	249	264	513

^{1/} As from 2010, data are calculated as at 31st December instead of 30th June as in previous years

^{2/} In this age group, only orphans attending full-time education receive a pension.

^{3/} These are children whose parents were previously beneficiaries of Basic Retirement Pension or Basic Widow's Pension or Basic Invalid's Pension.

Table 9.3(b) - Children receiving selected Social Security benefits by age-group & sex , Island of Rodrigues, 2007 - 2011 ¹

	2007			2008			2009			2010			2011		
	Male	Female	Both Sexes	Male	Female	Both Sexes	Male	Female	Both Sexes	Male	Female	Both Sexes	Male	Female	Both Sexes
Beneficiaries of Basic Orphan's pension	41	26	67	47	19	66	33	15	48	31	14	45	27	20	47
<i>of whom:</i>															
<i>Under 15years</i>	17	8	25	20	8	28	17	7	24	16	8	24	14	12	26
<i>(15 - 19) years ^{2/}</i>	24	18	42	27	11	38	16	8	24	15	6	21	13	8	21
Beneficiaries of child allowance	309	335	644	339	345	684	326	355	681	333	347	680	330	358	688
<i>of whom:</i>															
children of old-age pensioners	4	7	11	5	7	12	5	5	10	6	5	11	8	3	11
children of widows	111	115	226	102	104	206	85	102	187	101	105	206	101	111	212
children of disabled persons	184	202	386	218	220	438	223	233	456	214	220	434	209	228	437
Other ^{3/}	10	11	21	14	14	28	13	15	28	12	17	29	12	16	28

^{1/} As from 2010, data are calculated as at 31st December instead of 30th June as in previous years

^{2/} In this age group, only orphans attending full-time education receive a pension.

^{3/} These are children whose parents were previously beneficiaries of Basic Retirement Pension or Basic Widow's Pension or Basic Invalid's Pension.

Table 9.4 - Juvenile offences¹, Republic of Mauritius, 2006 - 2011

Year	Number of offences involving juveniles	Number of juveniles involved	Mid-year juvenile population estimates	Juvenile delinquency rate (per 1000 juveniles)
2006	398	417	129,319	3.2
2007	577	615	129,948	4.7
2008	591	679	128,673	5.3
2009	764	765	126,616	6.0
2010	594	648	123,697	5.2
2011	665	701	120,807	5.8

Table 9.4a - Juvenile offences¹, Island of Mauritius, 2006 - 2011

Year	Number of offences involving juveniles	Number of juveniles involved	Mid-year juvenile population estimates	Juvenile delinquency rate (per 1000 juveniles)
2006	395	414	124,767	3.3
2007	569	608	125,515	4.8
2008	572	662	124,289	5.3
2009	716	724	122,341	5.9
2010	582	635	119,490	5.3
2011	661	697	116,589	6.0

Table 9.4b - Juvenile offences¹, Island of Rodrigues, 2006 - 2011

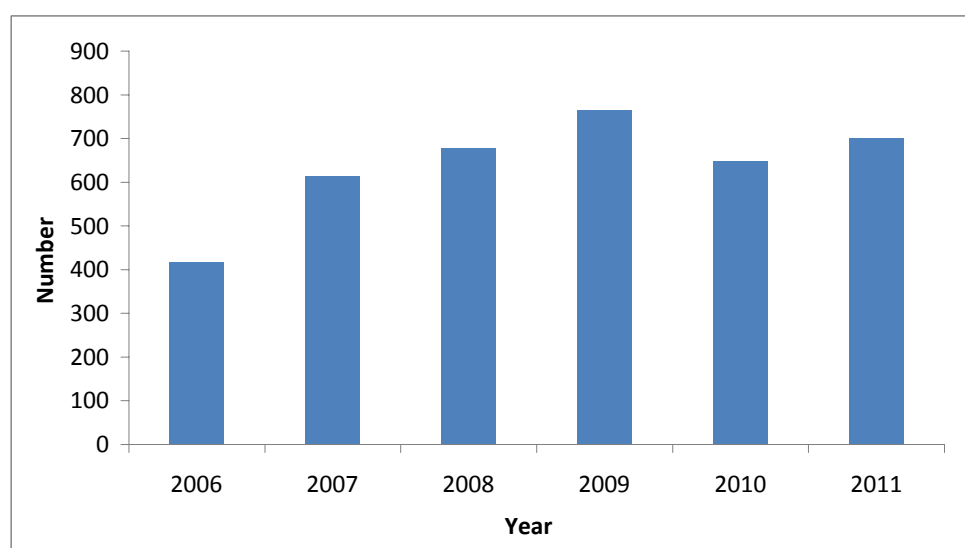
Year	Number of offences involving juveniles	Number of juveniles involved	Mid-year juvenile population estimates	Juvenile delinquency rate (per 1000 juveniles)
2006	3	3	4,552	0.7
2007	8	7	4,433	1.6
2008	19	17	4,384	3.9
2009	48	41	4,275	9.6
2010	12	13	4,207	3.1
2011	4	4	4,218	0.9

¹ excluding contraventions

Table 9.5 - Juveniles involved in offences¹ by type of offence, Republic of Mauritius, 2006 - 2011

Year	Intentional homicide	Assault	Sexual offences	Larceny	Other	TOTAL
2006	4	173	57	124	59	417
2007	4	261	45	168	137	615
2008	9	275	68	196	131	679
2009	3	283	47	199	233	765
2010	3	279	43	160	163	648
2011	2	293	60	134	212	701

Figure 3 - Total number of juveniles involved in offences¹, Republic of Mauritius, 2006 - 2011



¹ excluding contraventions

Table 9.6 - No of convicted persons below 18 years by type of offence and sex , 2009 - 2011

Type of offence	2009				2010				2011			
	10 -14 yrs		15 - 17 yrs		10 -14 yrs		15 - 17 yrs		10 -14 yrs		15 - 17 yrs	
	M	F	M	F	M	F	M	F	M	F	M	F
Larceny	1	-	12	-	-	-	25	4	-	-	-	-
Larceny Breaking/ night breaking	-	-	9	-	1	-	10	-	-	-	2	-
Larceny Violence	-	-	1	-	-	-	5	-	-	-	2	-
Larceny two in number/more than two in number	3	-	24	1	2	-	23	4	-	-	21	1
Larceny by persons on receipt of wages	-	-	1	-	-	-	-	1	-	-	-	-
Larceny other	-	-	9	-	3	-	9	-	-	-	7	1
Attempt at larceny	-	-	-	-	-	-	4	1	-	-	1	-
Sexual intercourse with female under 16	-	-	-	-	-	-	1	-	-	-	1	-
Possession of stolen property	-	-	4	-	-	-	-	-	-	-	3	-
Aiding & abeting wounds & blows	-	-	-	-	-	-	-	-	-	-	-	-
Assault	-	-	-	-	-	-	-	-	-	-	3	-
Attempt upon chastity	-	-	3	-	-	-	-	-	-	-	-	-
Conspiracy	-	-	3	-	-	-	-	-	-	-	-	-
Aiding & abeting	-	-	3	-	-	-	4	-	-	-	3	-
Bearing offensive weapons	-	-	-	-	-	-	-	-	-	-	-	-
Possession of gandia/psychotropic substances	-	-	-	-	-	-	3	-	-	-	-	-
Sodomy	-	-	1	-	-	-	-	-	-	-	1	-
Other	1	-	5	-	-	-	9	-	1	-	10	1
Total	5	-	75	1	6	-	93	10	1	-	54	3

Table 9.7 - No of persons below 14 years prosecuted by police, by type of offence & sex , 2009 - 2011

Type of offence	2009				2010				2011				
	5 - 9 yrs		10 - 13 yrs		5 - 9 yrs		10 - 13 yrs		5 - 9 yrs		10 - 13 yrs		
	M	F	M	F	M	F	M	F	M	F	M	F	
Larceny	-	-	8	-	-	-	9	-	-	-	-	-	-
Larceny breaking	-	-	2	-	-	-	1	-	-	-	-	-	-
Attempt at larceny	-	-	3	-	-	-	-	-	-	-	-	-	-
Possession of stolen properties	-	-	5	-	-	-	-	-	-	-	-	1	-
Aiding and abetting	-	-	-	-	-	-	-	-	-	-	-	-	-
Damaging enclosure	-	-	-	-	-	-	-	-	-	-	-	-	-
Child beyond control	-	-	-	-	-	-	-	-	-	-	-	-	-
Sodomy	-	-	-	-	-	-	-	-	-	-	-	-	-
Rape	-	-	1	-	-	-	-	-	-	-	-	-	-
Assault	1	-	23	-	-	-	3	1	-	-	-	-	-
Larceny being more than 2 in number	-	-	3	-	-	-	6	1	-	-	-	-	-
Damaging motor vehicle	-	-	-	-	-	-	-	-	-	-	-	-	-
Arson	-	-	-	-	-	-	-	-	-	-	-	-	-
Other	-	-	6	-	-	-	-	-	1	-	17	1	-
Total	1	-	51	-	-	-	19	2	1	-	18	1	-

Table 9.8 - No of child abuse cases reported to the Police, 2009 - 2011

Type of abuse	2009			2010			2011		
	Male	Female	Both sexes	Male	Female	Both sexes	Male	Female	Both sexes
Physical abuse	77	73	150	64	83	147	72	60	132
Abandonment	1	1	2	1	3	4	1	1	2
Illtreatment	-	1	1	1	5	6	9	5	14
Behavioural problem	-	-	-	-	1	1	-	-	-
Sexual intercourse under 16	-	104	104	-	-	-	-	100	100
Attempt upon chastity	11	61	72	-	-	-	6	69	75
Sodomy	10	11	21	-	-	-	15	13	28
Rape	-	12	12	-	-	-	-	15	15
Absorbing noxious substances	16	12	28	12	16	28	10	15	25
Burns	3	1	4	1	-	1	-	-	-
Indecent assault	-	2	2	-	-	-	-	-	-
Absorbing pills	4	12	16	3	6	9	2	6	8
Attempt at suicide	2	9	11	3	7	10	1	3	4
Child abduction	1	9	10	-	3	3	5	3	8
Child labour	-	1	1	-	-	-	-	-	-
Other	20	43	63	6	11	17	4	17	21
Total	145	352	497	91	135	226	125	307	432

Table 9.9 - No of child victims who have received counselling & assistance in recovery, 2009 - 2011

Type of abuse	2009			2010			2011		
	Male	Female	Both sexes	Male	Female	Both sexes	Male	Female	Both sexes
Physical abuse	6	12	18	5	22	27	1	5	6
Neglect	4	13	17	2	7	9	2	3	5
Abandonment	1	9	10	-	1	1	-	2	2
Illtreatment	-	-	-	-	-	-	-	1	1
Behavioural problem	25	27	52	19	26	45	17	24	41
Sexual intercourse under 16	-	12	12	-	-	-	-	-	-
Mendicity	-	-	-	1	-	1	-	-	-
Not attending school	1	4	5	2	-	2	1	1	2
Absorbing pills	-	-	-	-	-	-	-	-	-
Emotional & psychological abuse	-	2	2	-	3	3	2	-	2
Teenage pregnancy	-	-	-	-	2	-	-	-	-
Child labour	-	-	-	-	-	-	-	-	-
Other	7	3	10	-	7	7	-	-	-
Total	44	82	126	29	68	97	23	36	59

Table 9.10 - No of children with disabilities attending schools, 2009 - 2011

Children with disabilities attending:	2009	2010	2011
Regular schools	400	450	475
Special schools	1,500	1,661	1,853
Day care centres	600	700	850

Table 9.11 - No of children deprived of family environment and admitted in institutions by age and sex, 2010 - 2011

Age group (years)	2010			2011		
	Male	Female	Both sexes	Male	Female	Both sexes
0 - 5	41	28	69	34	23	57
6 - 10	25	30	55	26	30	56
11 - 15	19	29	48	14	26	40
16 - 20	2	8	10	1	11	12
Total	87	95	182	75	90	165

Table 9.12 - No of children placed in foster families, 2009 - 2011

Year	Male	Female	Both sexes	Urban	Rural	Both sexes
2009	3	6	9	3	6	9
2010	2	3	5	1	4	5
2011	9	9	18	3	15	18

Table 9.13 - No. of children adopted through inter-country adoptions by sex, 2009 - 2011

Year	Male	Female	Both sexes	Urban	Rural	Both sexes
2009	3	9	12	11	1	12
2010	4	6	10	7	3	10
2011	3	11	14	8	6	14

Table 9.14 - No. of children under 16 years involved in labour, June 08 - May 11

Year	Enterprise visited	Enterprise employing children	Children employed	
			Male	Female
June 08 - May 09	1423	2	2	-
June 09 - May 10	621	-	-	-
June 10 - May 11	435	1	-	1

Table 9.15 - No of children placed in Probation Hostel and Home by region, 2010 - 2011

Region	2010			2011		
	Male	Female	Both sexes	Male	Female	Both sexes
Urban	1	1	2	-	2	2
Rural	2	-	2	-	1	1
Total	3	1	4	-	3	3

Table 9.15a - No of children placed in Probation Hostel and Home by type of crime/charge, 2010 - 2011

Type of crime/charge	2010			2011		
	Male	Female	Both sexes	Male	Female	Both sexes
Larceny	1	-	1	-	-	-
Committed to an institution	1	1	2	-	-	-
Child beyond control	1	-	1	-	3	3

Table 9.15b - No of children placed in Probation Hostel and home by age and sex, 2011

Age (years)	Male	Female	Both sexes
< 10	-	-	-
11	-	-	-
12	-	1	1
13	-	-	-
14	-	-	-
15	-	1	1
16	-	1	1
17	-	-	-
Total	-	3	3

Table 9.16 - Health care expenditure (Rs Billion)

	July - Dec 2009	2010	2011
Expenditure on health care	3.27	7.55	7.95
% of GDP	2.20	2.50	2.44

Table 9.17 - Expenditure on programmes and services for children with disabilities (Rs Million)

	July - Dec 2009	2010	2011
Transport services only (for parents & free for children)	3.7	9.4	8.7

Table 9.18 - Expenditure on support programmes for families (Rs Million)

	July - Dec 2009	2010	2011
Pension under NPF Act			
Basic Orphan Pension (BOP) and Child Allowance	131.2	242.4	246.3
Under Social Aid Act	300.7	615.6	582.6
Refund of examination fees	0.7	69.5	150.0

Table 9.19 - Expenditure on protection of children who are in need of alternative care including the support of care services (Rs Million)

	2010	2011
Charitable institutions: orphanages	4.0	4.2

Table 9.20 - Expenditure on programmes & activities for the prevention of and protection from child abuse, child sexual exploitation & child labour (Rs Million)

	2010	2011
Child Development Unit	61.7	91.9
National Children's Council	9.0	9.1
Ministry (Total)	304.2	534.6

Table 9.21 - Expenditure on juvenile justice and the recovery and reintegration of juvenile offenders (Rs Million)

	2010	2011
Rehabilitation of Youth Centre	15.3	15.8
Payment of contribution to Probation Hostels for Boys and Girls	2.1	2.2



MISCELLANEOUS

Table 10.1 - GII by selected countries, 2011

Country	Rank	Value
Sweden	1	0.049
Netherlands	2	0.052
Singapore	8	0.086
France	10	0.106
Australia	18	0.136
United Kingdom	34	0.209
Mauritius	63	0.353
South Africa	94	0.490
Iraq	117	0.579
Kenya	129	0.617
India	130	0.627
Yemen	146	0.769

Note : The Gender Inequality Index (GII) , introduced by the United Nations in 2010, is a composite measure reflecting inequality in achievements between women and men in three dimensions, namely reproductive health, empowerment and the labour market. It varies between zero (when women and men fare equally) and one (when men or women fare poorly compared to the other in all dimensions).

According to the latest figures published in the 2011 UN Human Development Report, Mauritius ranked 63rd out of 146 countries with a GII value of 0.35.

Sweden ranked first with a value of 0.05 and Yemen last with a value of 0.77.